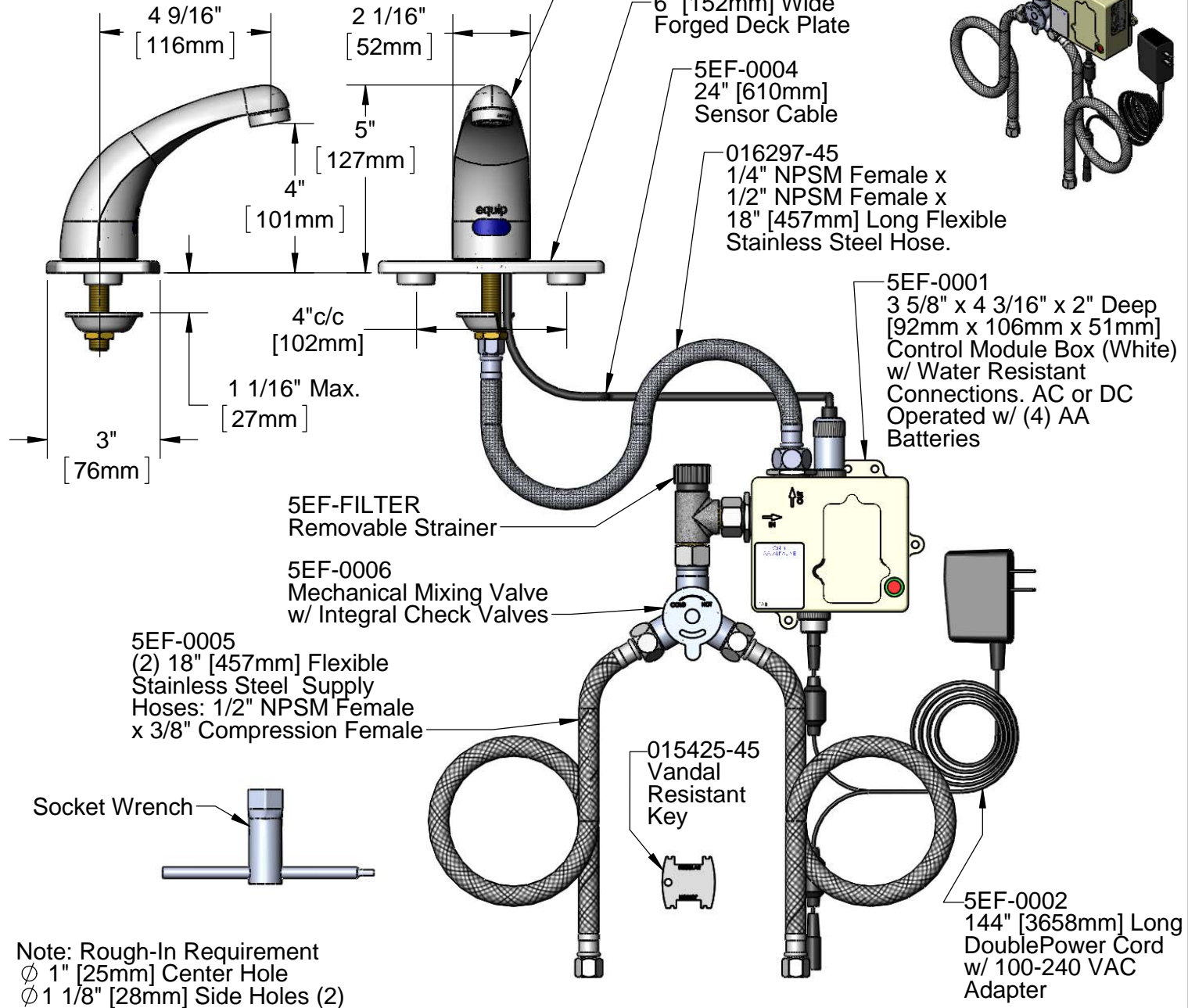
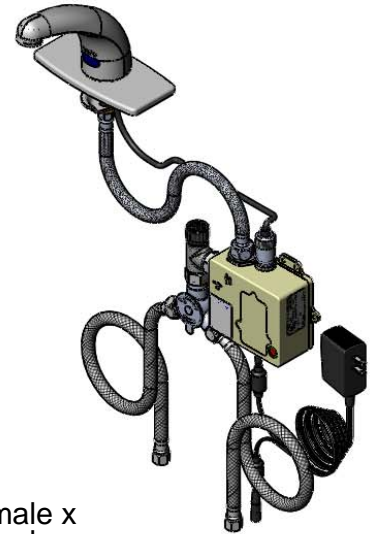


This Space for Architect/Engineer Approval

Job Name _____ Date _____
 Model Specified _____ Quantity _____
 Customer/Wholesaler _____
 Contractor _____
 Architect/Engineer _____



ADA Compliant



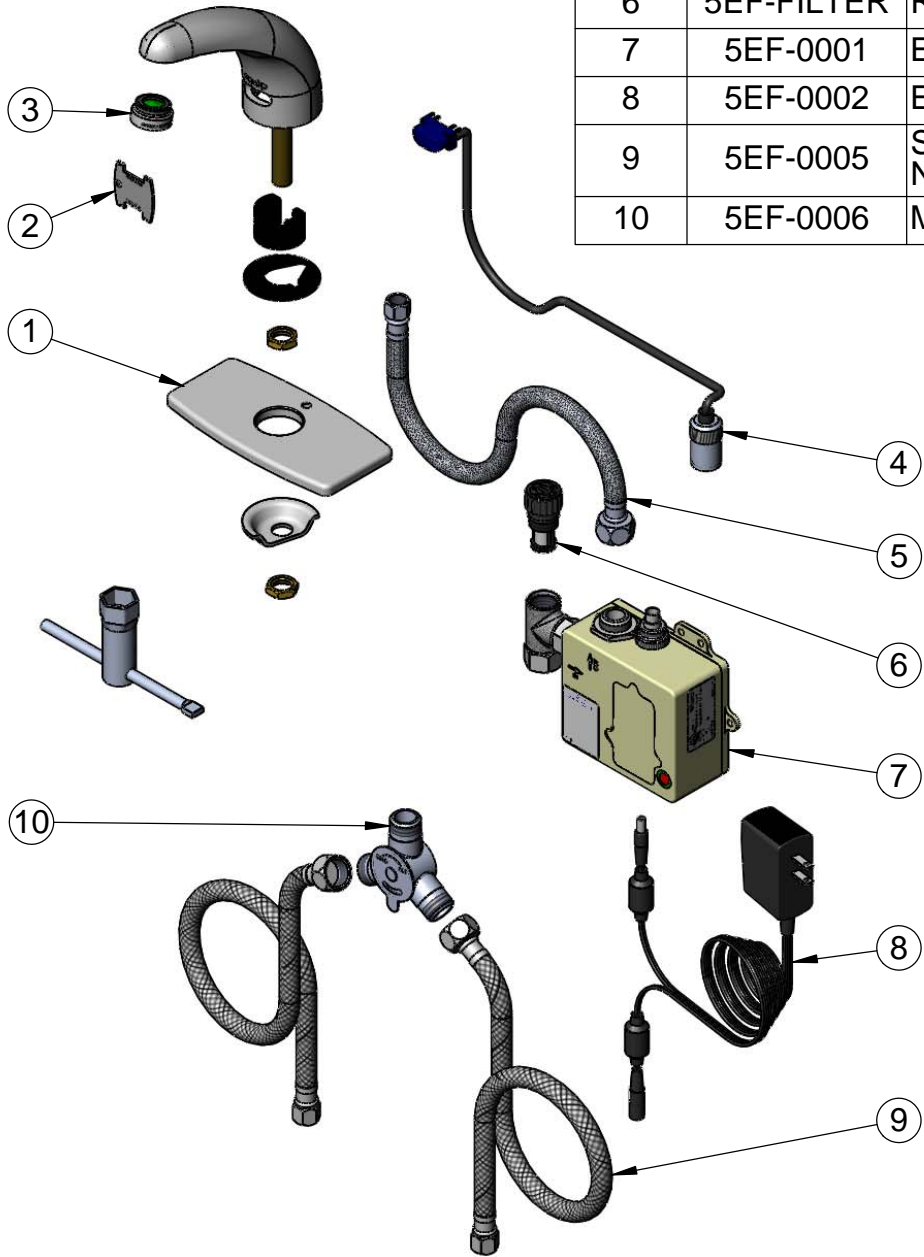
Model Number 5EF-1D-DS-4DP	Date 11/21/11	Scale 1:4	Drawn DMH	Checked GEF	Approved JHB
-------------------------------	------------------	--------------	--------------	----------------	-----------------



Product Specifications:
 Electronic Faucet: Cast Brass Single Hole Deck Mount, 4" c/c Deck Plate, Temperature Control Mixing Valve w/ Integral Check Valves, (2) 18" Long Flexible Supply Hoses & AC-DC Control Module

equip Foodservice Accessories
 2 Saddleback Cove, P.O. Box 1088
 Travelers Rest, South Carolina 29690
 Phone: 800.891.4808 Fax: 800.868.0084

ITEM NO.	SALES NO.	DESCRIPTION
1	013433-40	4" c/c Forged Deck Plate
2	015425-45	Vandal Resistant Key
3	B-0199-09	Vandal Resistant Aerator, 2.2 GPM
4	5EF-0004	24" Sensor Cable
5	016297-45	Inlet Hose, Faucet, 1/2" NPSM-F x 1/4" NPSM-F
6	5EF-FILTER	Replacement Filter
7	5EF-0001	Equip Sensor faucet Control Module
8	5EF-0002	Equip AC Transformer, 100-240 VAC
9	5EF-0005	Supply Hose, 9/16-24 Female x 1/2" NPSM
10	5EF-0006	Mechanical Mixing Valve



Model Number 5EF-1D-DS-4DP	Date 11/21/11	Scale NTS	Drawn DMH	Checked GEF	Approved JHB
-------------------------------	------------------	--------------	--------------	----------------	-----------------



Product Specifications:

Electronic Faucet: Cast Brass Single Hole Deck Mount, 4" c/c Deck Plate, Temperature Control Mixing Valve w/ Integral Check Valves, (2) 18" Long Flexible Supply Hoses & AC-DC Control Module

equip Foodservice Accessories
 2 Saddleback Cove, P.O. Box 1088
 Travelers Rest, South Carolina 29690
 Phone: 800.891.4808 Fax: 800.868.0084