



## ULTRA-GLO™ CERAMIC INFRARED FOODWARMERS

Models UGA-18, -24, -30, -36, -42, -48, -54, -60, -66, -72 UGAH-18, -24, -30, -36, -42, -48, -54, -60, -66, -72  
UGAL-18, -24, -30, -36, -42, -48, -54, -60, -66, -72 UGAHL-18, -24, -30, -36, -42, -48, -54, -60, -66, -72

Hatco Ultra-Glo Ceramic Foodwarmers ensure maximum flavor, safety and holding time without continuing to cook the food. The prefocused heat pattern provides an increased pyramidal dimension, enveloping the food holding area not just side-to-side, but front-to-back. Heat is concentrated at the edges where heat loss is the greatest.

### FLEXIBILITY

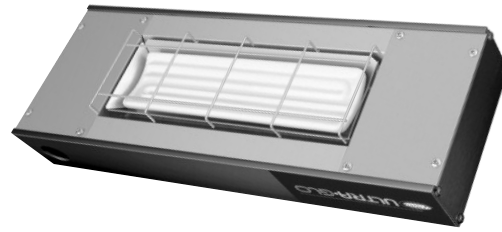
The increased height of the ceramic heat source offers improved operational working clearances, giving the chef and server an improved ergonomic environment in which to work.

With a variety of widths and options, Ultra-Glo Ceramic Foodwarmers are adaptable to any location and configuration. Back or front-of-the-house use, open kitchen concepts or buffet lines, Ultra-Glo is available in continuous single or dual aluminum housings up to 6' (1829 mm), with or without lights. Angle brackets come standard, non-adjustable tubular stands are optional. Ultra-Glo models have a clear anodized finish and are available in optional Gloss Finishes or standard *Designer* colors.

### QUALITY

The following features assure the finest performance for years to come:

- Available in widths from 18" to 72" (457-1829 mm).
- Sturdy extruded aluminum housings eliminate sagging.
- Prefocused heat maintains safe serving temperatures longer without continuing to cook the food.
- Variety of models, configurations and colors provide unlimited flexibility.
- Optional coated shatter-resistant incandescent lights enhance brilliant product display while safeguarding food from bulb breakage.



Model UGAH-18  
with remote control box  
(not shown) and optional  
translucent gloss finish



Model UGAL-60



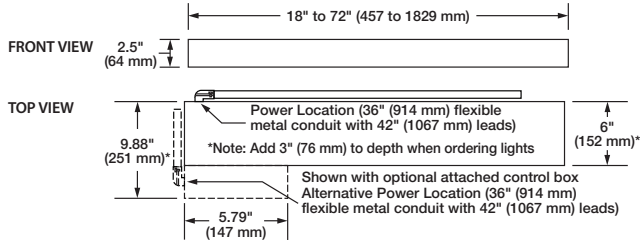
HATCO CORPORATION P.O. Box 340500 Milwaukee, WI 53234-0500 U.S.A.  
(800) 558-0607 • (414) 671-6350 • Fax (800) 543-7521 • Int'l. Fax (414) 671-3976  
[www.hatcocorp.com](http://www.hatcocorp.com) • E-mail: [equipsales@hatcocorp.com](mailto:equipsales@hatcocorp.com)

CERAMIC HEATING ELEMENTS GUARANTEED AGAINST  
BURNOUT FOR ONE YEAR.



# ULTRA-GLO™ CERAMIC INFRARED FOODWARMERS

Models UGA-18, -24, -30, -36, -42, -48, -54, -60, -66, -72 UGAH-18, -24, -30, -36, -42, -48, -54, -60, -66, -72  
 UGAL-18, -24, -30, -36, -42, -48, -54, -60, -66, -72 UGAHL-18, -24, -30, -36, -42, -48, -54, -60, -66, -72



## SPECIFICATIONS: Single Models - Aluminum

STANDARD WATT	WATTS	AMPS	HIGH WATT	WATTS	AMPS	WIDTH	SHIPPING WEIGHT*		
UGA-18	120V 208V 240V	500 490 500	4.2 2.4 2.1	UGAH-18	120V 208V 240V	650 675 650	5.4 3.2 2.7	18" ( 457 mm)	9 lbs. (4 kg)
UGA-24	120V 208V 240V	650 675 650	5.4 3.2 2.7	UGAH-24	120V 208V 240V	750 750 750	6.3 3.6 3.1	24" ( 610 mm)	10 lbs. (5 kg)
UGA-30	120V 208V 240V	900 840 900	7.5 4.0 3.8	UGAH-30	120V 208V 240V	1125 1125 1125	9.4 5.4 4.7	30" ( 762 mm)	11 lbs. (5 kg)
UGA-36	120V 208V 240V	1000 980 1000	8.3 4.7 4.2	UGAH-36	120V 208V 240V	1300 1350 1300	10.8 6.5 5.4	36" ( 914 mm)	12 lbs. (5 kg)
UGA-42	120V 208V 240V	1200 1120 1200	10.0 5.4 5.0	UGAH-42	120V 208V 240V	1500 1500 1500	12.5 7.2 6.3	42" (1067 mm)	13 lbs. (6 kg)
UGA-48	120V 208V 240V	1500 1470 1500	12.5 7.1 6.3	UGAH-48*	- 208V 240V	- 2025 1950	- 9.7 8.1	48" (1219 mm)	14 lbs. (6 kg)
UGA-54*	208V 240V	1470 1500	7.1 6.3	UGAH-54*	208V 240V	2250 2250	10.8 9.4	54" (1372 mm)	16 lbs. (7 kg)
UGA-60*	208V 240V	1960 2000	9.4 8.3	UGAH-60*	208V 240V	2700 2600	13.0 10.8	60" (1524 mm)	17 lbs. (8 kg)
UGA-66*	208V 240V	1960 2000	9.4 8.3	UGAH-66*	208V 240V	2700 2600	13.0 10.8	66" (1676 mm)	19 lbs. (9 kg)
UGA-72*	208V 240V	1960 2000	9.4 8.3	UGAH-72*	208V 240V	3000 3000	14.4 12.5	72" (1829 mm)	20 lbs. (9 kg)

\* Does not include RMB. Add 2-8 lbs. (1-3 kg) to shipping weight depending on size of RMB.

• Not available in 120 volt.

## DIMENSIONS

Single Models with Remote Control Enclosure:

18"-72"W x 6"D▲ x 2.5"H (457-1829 x 152 x 64 mm).

Single Models with Attached Control Box:

18"-72"W x 9.88"D▲ x 2.5"H (457-1829 x 251 x 64 mm).

Remote Control Enclosure: 5.5", 9", 14", 16", or

20"W x 3"D x 2.5"H (140, 229, 356, 406, or 508 x 76 x 64 mm).

Attached Control Box: 5.79" (single).

▲ Add 3" (76 mm) to depth when ordering single model units with lights.

## OPTIONS (NOT FOR RETROFIT)

- Designer Colors: Warm Red, Black, Gray Granite, White Granite, Navy Blue, Hunter Green, Antique Copper
- Gloss Finishes: Gleaming Gold, Glossy Gray, Bold Black, Radiant Red, Brilliant Blue
- Non-standard colors are non-returnable
- Remote Control Enclosure

## PRODUCT SPECS - Infrared Foodwarmer

The Infrared Foodwarmer shall be an Ultra-Glo™, manufactured by the Hatco Corporation, Milwaukee, WI 53234 U.S.A.

The Foodwarmer shall be an Ultra-Glo Model ..., rated at ... watts, ... volts, single phase and be ... inches (millimeters) in overall width.

## SPECIFICATIONS: Single Models with Lights - Aluminum

STANDARD WATT	WATTS	AMPS	HIGH WATT	WATTS	AMPS	WIDTH	SHIPPING WEIGHT*		
UGAL-18	120V 120/208V 120/240V 240V	560 550 560 560	4.7 2.9 2.6 2.3	UGAHL-18	120V 120/208V 120/240V 240V	710 735 710 710	5.9 3.7 3.2 3.0	18" ( 457 mm)	12 lbs. (5 kg)
UGAL-24	120V 120/208V 120/240V 240V	770 795 770 770	6.4 4.2 3.7 3.2	UGAHL-24	120V 120/208V 120/240V 240V	870 870 870 870	7.3 4.6 4.1 3.6	24" ( 610 mm)	13 lbs. (6 kg)
UGAL-30	120V 120/208V 120/240V 240V	1020 960 1020 1020	8.5 5.0 4.8 4.3	UGAHL-30	120V 120/208V 120/240V 240V	1245 1245 1245 1245	10.4 6.4 5.7 5.2	30" ( 762 mm)	15 lbs. (7 kg)
UGAL-36	120V 120/208V 120/240V 240V	1180 1160 1180 1180	9.8 6.2 5.7 4.9	UGAHL-36	120V 120/208V 120/240V 240V	1480 1530 1480 1480	12.3 8.0 6.9 6.2	36" ( 914 mm)	17 lbs. (8 kg)
UGAL-42	120V 120/208V 120/240V 240V	1380 1300 1380 1380	11.5 6.9 6.5 5.8	UGAHL-42	120V 120/208V 120/240V 240V	1680 1680 1680 1680	14.0 8.7 7.5 7.0	42" (1067 mm)	18 lbs. (8 kg)
UGAL-48	120V 120/208V 120/240V 240V	1740 1710 1740 1740	14.5 9.1 8.3 7.3	UGAHL-48*	- 120/208V 120/240V 240V	- 2265 2190 2190	- 11.7 10.1 9.1	48" (1219 mm)	20 lbs. (9 kg)
UGAL-54*	120/208V 120/240V 240V	1710 1740 1740	9.1 8.3 7.3	UGAHL-54*	120/208V 120/240V 240V	2490 2490 2490	12.8 11.4 10.4	54" (1372 mm)	22 lbs. (10 kg)
UGAL-60*	120/208V 120/240V 240V	2260 2300 2300	11.9 10.8 9.6	UGAHL-60*	120/208V 120/240V 240V	3000 2900 2900	15.5 13.3 12.1	60" (1524 mm)	23 lbs. (10 kg)
UGAL-66*	120/208V 120/240V 240V	2260 2300 2300	11.9 10.8 9.6	UGAHL-66*	120/208V 120/240V 240V	3000 2900 2900	15.5 13.3 12.1	66" (1676 mm)	25 lbs. (11 kg)
UGAL-72*	120/208V 120/240V 240V	2320 2360 2360	12.4 11.3 9.8	UGAHL-72*	120/240V 240V 120/208V† circ 1 280V circ 2 120V	3360 3360 3000 360	15.5 14.1 14.4 3.0	72" (1829 mm)	27 lbs. (12 kg)

■ Shaded areas contain electrical information for **Export units only**.

† Unit with multiple circuit connections. Each circuit may require a separate circuit breaker.

## VOLTAGE

120, 208 and 240 volts, single phase. Models with Lights: 120, 120/208 and 120/240 volts, single phase.

## MOUNTING REQUIREMENTS

Ultra-Glo Warmers must be mounted at least 1" (25 mm) below shelf.

Ultra-Glo Single Standard Watt Warmers should be positioned 14" to 18" (356-457 mm) above a non-metallic surface.

Single High Watt Warmers should be positioned 16" to 22" (406-559 mm) above a non-metallic surface.

- Non-Adjustable Tubular Stands – 14"-24" (356-610 mm)
- Incandescent Lights
- Halogen Bulbs in lieu of Standard Display Lights
- Extended Electrical Leads
- Remote Control Enclosure with Toggle Switch, Electronic Infinite Control, Relay, and Indicator Light (in lieu of attached control box)

The Ultra-Glo shall consist of an aluminum housing, ceramic heating element, and angle brackets for mounting. Remote Control Enclosure is recommended. Mounting heights between 14" to 18" (356-457 mm) single standard (low) watt, 16" to 22" (406-559 mm) single high watt.

24/7 parts and service assistance (U.S. and Canada only).

HATCO CORPORATION P.O. Box 340500 Milwaukee, WI 53234-0500 U.S.A. • (800) 558-0607 • (414) 671-6350  
 Fax (800) 543-7521 • Int'l. Fax (414) 671-3976 • www.hatcocorp.com • E-mail: equipsales@hatcocorp.com