

SPEC SHEET + MEASUREMENTS

PORT AUTHORITY.

Port Authority® Signature Workwear Apron. A903

Product photo

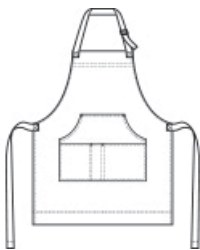


An ideal choice for builders and artisans, this apron is constructed from heavyweight cotton duck material and features multiple pockets for tools.

- 12-ounce, 100% cotton duck
- Adjustable web neck strap with antique brass slider
- Locker loop at back of neck
- Dark Brown contrast web waist ties and utility loop
- Kangaroo pockets with multiple pockets
- Antique brass rivets
- Heavy-duty double-needle topstitching throughout
- 13"w across chest x 34"l

Care Instructions Machine Wash Cold. Only Non-Chlorine Bleach, When Needed. Tumble Dry Low. Remove Promptly. Warm Iron, If Needed.

Sketches



front



back

PRODUCT MEASUREMENTS

OSFA

Apron Length	34
Apron Pocket Width - Wearers Left	8 1/2
Apron Pocket Width w/Pen Pocket - Middle Pocket	2
Apron Pocket Width- Wearer's Right	6 1/2
Apron Waist Width	26 1/2
Apron Width at Top	11

Apron Length: Measure at Center Front from top edge of apron to hem.

Apron Pocket Width - Wearers Left: Measure from side to side- Left Pocket.

Apron Pocket Width w/Pen Pocket - Middle Pocket: Measure from side to side, including pen pocket- Center Pocket.

Apron Pocket Width- Wearer's Right: Measure from side to side- Right Pocket.

Apron Waist Width: Measure under the waist straps straight across, edge to edge.

Apron Width at Top: Measure at top edge of apron, edge to edge.

COLORS

Please note: PMS code information is shown only when an exact match is available.



Charcoal
PMS 432C



Duck Brown
PMS 7568C