

# SPEC SHEET + MEASUREMENTS

PORT AUTHORITY.

## Port Authority® Signature Workwear Apron. A903

### Product photo

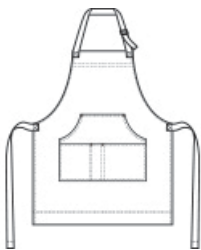


An ideal choice for builders and artisans, this apron is constructed from heavyweight cotton duck material and features multiple pockets for tools.

- 12-ounce, 100% cotton duck
- Adjustable web neck strap with antique brass slider
- Locker loop at back of neck
- Dark Brown contrast web waist ties and utility loop
- Kangaroo pockets with multiple pockets
- Antique brass rivets
- Heavy-duty double-needle topstitching throughout
- 13"w across chest x 34"l

**Care Instructions** Machine Wash Cold. Only Non-Chlorine Bleach, When Needed. Tumble Dry Low. Remove Promptly. Warm Iron, If Needed.

### Sketches



front



back

## PRODUCT MEASUREMENTS

---

### OSFA

Apron Length	34
Apron Pocket Width - Wearers Left	8 1/2
Apron Pocket Width w/Pen Pocket - Middle Pocket	2
Apron Pocket Width- Wearer's Right	6 1/2
Apron Waist Width	26 1/2
Apron Width at Top	11

**Apron Length:** Measure at Center Front from top edge of apron to hem.

**Apron Pocket Width - Wearers Left:** Measure from side to side- Left Pocket.

**Apron Pocket Width w/Pen Pocket - Middle Pocket:** Measure from side to side, including pen pocket- Center Pocket.

**Apron Pocket Width- Wearer's Right:** Measure from side to side- Right Pocket.

**Apron Waist Width:** Measure under the waist straps straight across, edge to edge.

**Apron Width at Top:** Measure at top edge of apron, edge to edge.

## COLORS

---

Please note: PMS code information is shown only when an exact match is available.



Charcoal  
PMS 432C



Duck Brown  
PMS 7568C