

# SPEC SHEET + MEASUREMENTS

PORT AUTHORITY.

Port Authority® Signature Heavy Twill Crossback Apron.  
A902

## Product photo

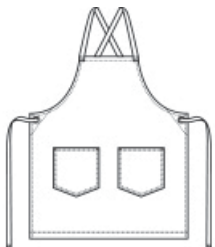


With its crossback design, this heavy-duty apron helps take the pressure off the shoulders—making it perfect for busy events.

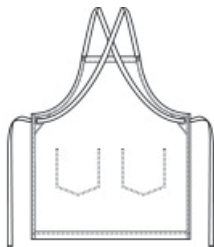
- 9.4-ounce, 100% cotton twill
- Contrast natural herringbone over-the-shoulder crossback neck straps
- Two chevron front pockets
- Herringbone tape towel loop on right side
- 13"w across chest x 32"l

**Care Instructions** Machine Wash Cold, With Like Colors. Only Non-Chlorine Bleach, When Needed. Tumble Dry Low. Warm Iron, If Needed.

## Sketches



front



back

## PRODUCT MEASUREMENTS

---

### OSFA

Apron Length	32
Apron Pocket Width - Wearers Left	8
Apron Pocket Width- Wearer's Right	8
Apron Waist Width	30
Apron Width at Top	11

**Apron Length:** Measure at Center Front from top edge of apron to hem.

**Apron Pocket Width - Wearers Left:** Measure from side to side- Left Pocket.

**Apron Pocket Width- Wearer's Right:** Measure from side to side- Right Pocket.

**Apron Waist Width:** Measure under the waist straps straight across, edge to edge.

**Apron Width at Top:** Measure at top edge of apron, edge to edge.

## COLORS

---

Please note: PMS code information is shown only when an exact match is available.



Deep Black  
PMS BLACK C



Olive Drab  
Green  
PMS 7771C



River Blue  
Navy  
PMS 2380C



Rose Quartz  
PMS 5025C



Sahara  
PMS 7529C