

SPEC SHEET + MEASUREMENTS

PORT AUTHORITY.

Port Authority® Signature Denim Apron. A901

Product photo

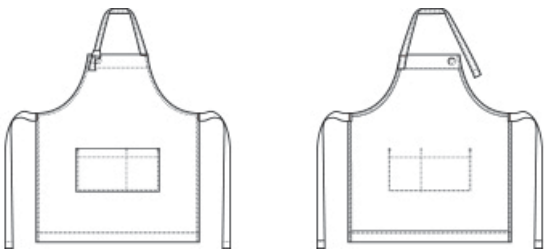


A soft and durable apron for makers, baristas, retail staff and more.

- 8-ounce, 100% cotton garment-washed denim
- Self-fabric neck strap with antique brass grommet pass through detail
- Large divided front pocket
- Duck Brown woven herringbone tape waist ties
- 13"w across chest x 32"l

Care Instructions Machine Wash Cold, With Like Colors. Only Non-Chlorine Bleach, When Needed. Tumble Dry Low. Warm Iron, If Needed.

Sketches



front

back

PRODUCT MEASUREMENTS

OSFA

Apron Length	32
Apron Pocket Width - Wearers Left	5 5/8
Apron Pocket Width- Wearer's Right	9 1/2
Apron Waist Width	30
Apron Width at Top	11

Apron Length: Measure at Center Front from top edge of apron to hem.

Apron Pocket Width - Wearers Left: Measure from side to side- Left Pocket.

Apron Pocket Width- Wearer's Right: Measure from side to side- Right Pocket.

Apron Waist Width: Measure under the waist straps straight across, edge to edge.

Apron Width at Top: Measure at top edge of apron, edge to edge.

COLORS

Please note: PMS code information is shown only when an exact match is available.



Dark Denim



Medium Denim