

Project _____
 Item _____
 Quantity _____
 FCSI Section 11400 _____
 Approved _____
 Date _____

MODULAR BASE WITH KETTLE(S)
 200M BTU GAS-FIRED STEAM GENERATOR WITH NICKELGUARD™
 ONE OR TWO, 6 GALLON KETTLE(S),
 CABINET BASE: 24" (600MM) OR 36" (900MM) WIDE

Models

- 24-GM-K6-200
- 36-GM-K66-300



Standard Features

- Factory assembled Kettle/Steam Generator NickleGard Base combination with one or two, 6 gallon kettles with 200M BTU Gas-Fired Steam Generator
- Solid State steam generator Water Level Controls
- Low Water Safety Cut-Off
- Pressure Limit Controls with 15 psi Safety Valve
- Type 430 Stainless Steel exterior enclosure, and table top (with Drain Trough which has 1.50" diameter male drain), #4 exterior finish
- Type 304 Stainless kettle(s), #4 exterior finish
- Separate "Start/Reset" Illuminated Switch Controls, plus Pressure Gauge
- Solid State Electronic Spark Ignition for energy savings
- Major components serviceable from the front of the unit
- 6 gallon kettle(s) are 2/3 Steam Jacketed and include Lift off Cover(s)
- Hot and Cold Water Faucet with Swing Spout
- Kettle(s) have 50 psi Steam Jacket Rating, 50 psi chrome plated Safety Valve(s) and Manual Tilting, balanced design
- Tilt Handles can be mounted on either side
- Steam Generator empties under pressure (blowdown) automatically upon each Shut-Down. Automatic Water Refill on Start-Up
- Standard voltage for controls is 115 volt, 60 Hz, single phase
- Adjustable Flanged Feet (FF-A)
- Secondary Low Water Cut-Off, factory installed (CALG) (Required for AZ. AR. CA. CO. CT. DE. FL. GA. HI. IL. IA. KS. MD. MA. MI. MN. MT. NE. NV. NM. NC. OK. OR. PR. RI. TN. UT. VA. WA. WV., Buffalo, NY, Wash. DC)
- Stainless Steel Base Frame (FSS)

Short Form Specifications

Shall be CLEVELAND, Modular Cabinet Base with one or two, 6 gallon kettle(s), Model _____ GM-K _____ -200, 200M Nickelguard™ BTU Gas-Fired Steam Generator, type 430 Stainless Steel exterior enclosure, Table Top, Back Splash and 4 level adjustable feet. 2/3 Steam Jacketed type 304 Stainless Steel kettle(s) with 50 psi Steam Jacket Rating; needle type Steam Control Valve on each kettle. Console mounted Controls, Pressure Gauge and Illuminated "Start/Reset" Control Switches. Solid State Water Level Steam Generator Controls and Electronic Spark Ignition. Steam Generator drains under pressure (blowdown) after each Shut-Down with Automatic Water Refill on Start-Up. 15 psi Safety Valve.

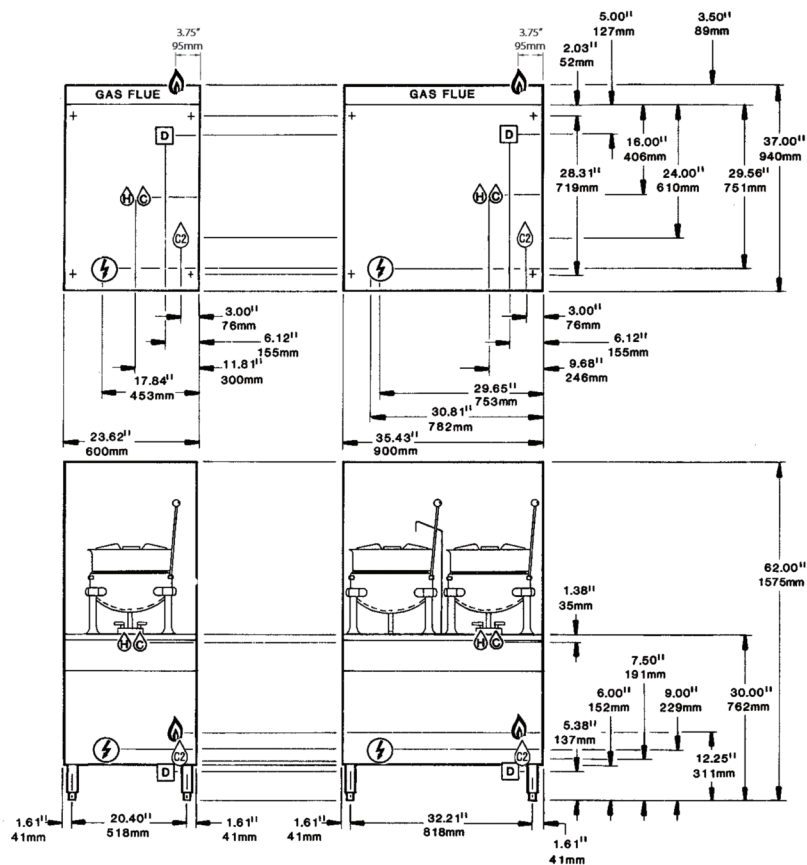
Options & Accessories

- Power Take-Off Kit (GPTO)
- Gas, other than natural
- Type 316 Stainless Steel kettle interior for high acid food products (316)
- Food Strainers (FS)
- Boiler Descaling Pump Kit (107142)

KE004046-120 B

CAPACITIES
 (in 4 oz. servings)
 (Other sizes may be calculated.)
 6 gallon / 23 liters 160 per kettle

WATER QUALITY REQUIREMENTS (Boilers, Generators)	
TTDS:	50-250 ppm
Hardness:	50 - 200 mm (3 - 12 gpg)
pH value:	7.0 - 8.5
CL (Chloride):	max 50 ppm
Cl2 (free chlorine):	max 0.1 ppm
SiO2 (silica):	max 13 ppm
NH2Cl: (mono-chloramine)	max 0.1 ppm
Total Alkalinity:	50 - 100 ppm
Water Pressure	35 - 80 PSI
Temperature:	max 104°F



GAS	ELECTRIC	WATER	DRAINAGE	CLEARANCE						
PIPING: 3/4" IPS for 220,000 BTU or less Supply Pressure <table border="1"> <thead> <tr> <th>NATURAL</th> <th>PROPANE</th> </tr> </thead> <tbody> <tr> <td>4.00" W.C. minimum</td> <td>12.00" W.C. minimum</td> </tr> <tr> <td>14.00" W.C. maximum</td> <td>14.00" W.C. maximum</td> </tr> </tbody> </table> Manufacturer must be notified if unit will be used above 2,000 ft. altitude.	NATURAL	PROPANE	4.00" W.C. minimum	12.00" W.C. minimum	14.00" W.C. maximum	14.00" W.C. maximum	115V-1PH 25 watt Steam Generator control. ** Do not connect to GFI outlet. See note below.	35 psi minimum 60 psi maximum 1/4" NPT hot and cold water for kettles 1/4" NPT cold water Boiler feed	1 1/2" IPS common drain. Do not connect any other units to this drain. The Floor Drain must be located outside the confines of the equipment base.	Right - 6", Left - 6", Rear - 6" (12" on control side if adjoining wall or equipment is over 30" high for service access) For use in non-combustible locations. Contact factory for variances to clearances.
NATURAL	PROPANE									
4.00" W.C. minimum	12.00" W.C. minimum									
14.00" W.C. maximum	14.00" W.C. maximum									

NOTES:

**DO NOT CONNECT TO GFI OUTLET. CLEVELAND RANGE RECOMMENDS GAS FIRED 120 VOLT STEAMERS BE HARD WIRED DIRECTLY TO ELECTRICAL SYSTEM. Cleveland Range reserves right of design improvement or modification, as warranted. Many regional, state and local codes exist and it is the responsibility of the owner and installer to comply with the codes. Cleveland Range equipment is built to comply with applicable standards for manufacturers. Included among those approval agencies are U.L./NSF#4 and CSA (AGA, CGA).

(NOT TO SCALE)