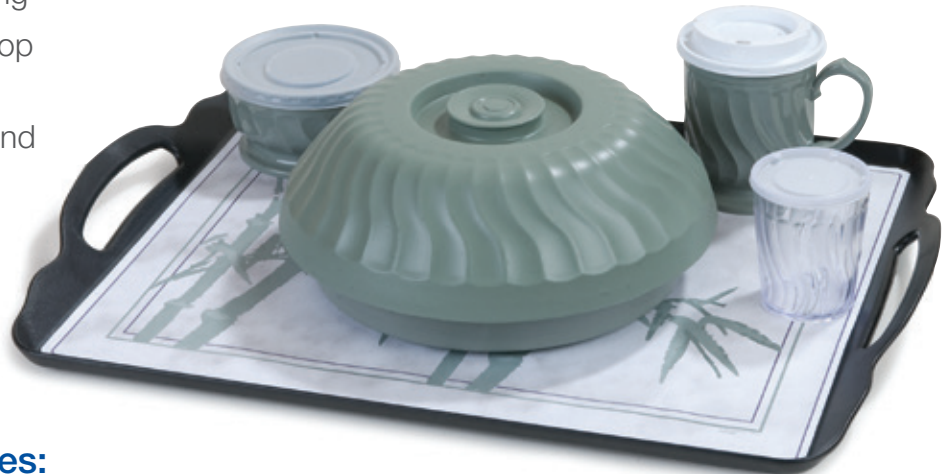


Room Service Trays

NEW!

*Low profile for patient comfort and ease of dining.
Non-skid version helps minimize spills.*

- 15" x 20" handled room service trays give an upscale dining experience
- Reinforced handles eliminates breaking; rounded for comfortable carrying
- Low rimmed edge keeps tray top items in place
- PC material eliminates fading and increase durability
- Available with both a standard and non-skid surface
- Dishwasher safe
- NSF Listed



DXRST1520

Special Healthcare Features:

- Non-skid trays eliminate traycovers making them a green alternative
- Compatible with most standard equipment for 15" x 20" trays
- Use with B size traycovers, see Dinex catalog for a listing of available options



DXRST1520NSQ