

ICB-DV Platinum Edition, 120V

26.8" x 23.4" x 10.0"
(68.1cm x 59.4cm x 25.4cm)



- 4.3" Color Touchscreen aides in customizing recipes, brewing options and control
- SmartWAVE sprayhead technology provides enhanced uniformity of extraction and lime scale reduction
- USB programming for uploading and downloading recipes and software updates, all in less than a minute
- Brews into 2.5 to 3.8L (84 to 128 oz) airpots and 3.8 to 5.7L (1 to 1.5 gallon) baseless Thermofresh servers
- BUNN Infusion Series technology allows for multiple recipes from one footprint
- Energy-saver mode reduces tank temperature during idle periods
- Exclusive Peak Extraction™ Sprayhead is multi-directional with a 17-hole design to ensure ultimate uniformity of extraction
- Electronic funnel lock prevents removal of the brew funnel until drip-through is complete
- Brew counter keeps track of how many batches are brewed
- Pre-infusion and pulse brew for maximum flavor extraction. Cold brew lockout & digital temperature control further ensure top-notch brewing
- Hot water faucet (supplied for custom installation)
- Dual voltage adaptable (Can operate at 120V/15 amp or 120/208-240V/20 amp)

Agency:



Specifications

Product #: 53300.0100

Water Access: Plumbed

Interface: Wireless

Finish: Stainless

Funnel: Stainless Steel

Additional Features

BrewWISE

Electrical & Capacity

Volts	Amps	Watts	Cord Attached	Plug Type	8oz cups/hr 236ml cups/hr	Input H ₂ O Temp.	Phase	# Wires plus Ground	Hertz
120	14	1700	Yes	NEMA 5-15P	82	60°F (15.5°C)	1	2	60
120/208	14	2900	-	N/A	136	60°F (15.5°C)	1	3	60
120/240	17	4050	-	N/A	181	60°F (15.5°C)	1	3	60

Plumbing Requirements

PSI	kPa	Fitting Supplied	Water Flow Required (GPM)
20-90	138-621	3/8" Male Flare Fitting	1.00

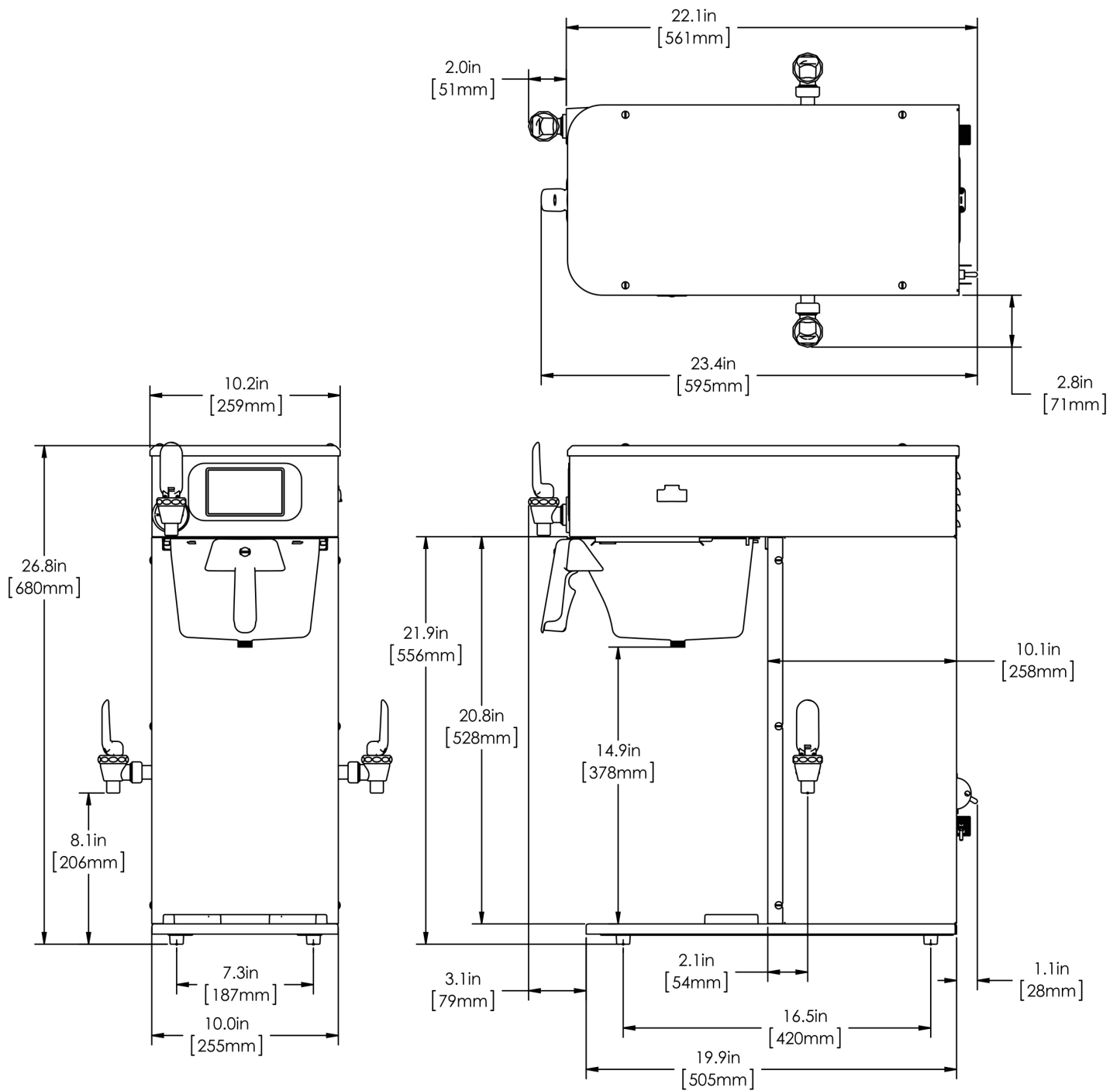
CAD Drawings

2D	Revit	KLC
●		



BUNN® reserves the right to change specifications and product design without notice. Such revisions do not entitle the buyer to corresponding changes, improvements, additions or replacements for previously purchased equipment. For most current specifications and other info visit bunn.com.

Created on:
01/24/2019



Unit				Shipping				
	Width	Height	Depth	Width	Height	Depth	Weight	Volume
English	10.0 in.	26.8 in.	23.4 in.	10.2 in.	26.8 in.	24.1 in.	53.710 lbs	3.813 ft³
Metric	25.4 cm	68.1 cm	59.4 cm	25.9 cm	68.1 cm	61.2 cm	24.363 kgs	0.108 m³



BUNN® reserves the right to change specifications and product design without notice. Such revisions do not entitle the buyer to corresponding changes, improvements, additions or replacements for previously purchased equipment. For most current specifications and other info visit bunn.com.

Created on:
01/24/2019

Related Products & Accessories:ICB-DV Platinum Edition, 120V(53300.0100)



FILTERS, GOURMET 500
500/1 50/CL

Product #: 20138.1000



WATER FILTER,
EQHP-10L

Product #: 39000.0001



WATER FILTER,
EQHP-10

Product #: 39000.0004

STAND ASSY, TF
SERVER

Product #: 54473.0000

FUNNEL ASSY, SST
INFUSION COFFEE

Product #: 54675.0001



Serving & Holding Options: ICB-DV Platinum Edition, 120V(53300.0100)



AIRPOT, 2.5L GL PB
SINGLE PK

Product #:13041.0001



AIRPOT, 2.5L GL PB 6/
CASE

Product #:13041.0101



AIRPOT, 2.5L SST LA
SINGLE PK

Product #:32125.0000



AIRPOT, 2.5L SST LA 6/
CASE

Product #:32125.0100



AIRPOT, 3.0L SST LA
SINGLE PK

Product #:32130.0000



AIRPOT, 3.0L SST LA 6/
CASE

Product #:32130.0100



AIRPOT, 3.8L SST LA
SINGLE PK

Product #:36725.0000



AIRPOT, 3.8L SST LA 6/
CASE

Product #:36725.0100



STAND ASSY, TF
SERVER

Product #:39795.0003



TF SERVER, DSG2 1G
SST NOBASE

Product #:42700.0050



TF SERVER, DSG2 1G
BLK NOBASE

Product #:42700.0051



TF SERVER, 1G DSG
NOBASE GEN3

Product #:42700.0250



TF SERVER, DSG2 1.5G
SST NOBAS

Product #:42750.0050



TF SERVER, 1G/3.8L
MECH NOBASE

Product #:44000.0050



TF SERVER, 1G/3.8L
MECH BLK NOBASE

Product #:44000.0051



TF SERVER, 1G MECH
NOBASE GEN3

Product #:44000.0250



BUNN® reserves the right to change specifications and product design without notice. Such revisions do not entitle the buyer to corresponding changes, improvements, additions or replacements for previously purchased equipment. For most current specifications and other info visit bunn.com.

Created on:
01/24/2019