

BUNN®

Silver Series® 4-Flavor Cold Beverage System with LED Lighted Graphics

ITEM#

PROJECT

DATE



JDF-4S

Dimensions: 33.1"H x 15.7"W* x 25.5"D
(84.1cm H x 39.9cm W* x 64.8cm D)
*width including door handle

Features

Cold beverage dispenser with High Intensity® mixing delivers superior drinks consistently glass after glass

- A cost effective solution to providing your customers with superior performance in juice and other concentrated beverage dispensing.
- LED lighted door graphics bring high visibility to front-of-house applications.
- One dispenser delivers both frozen and ambient products increasing profits by lowering costs.
- Drink consistency assured with the BUNN High Intensity® mixing technology.
- Pumps and mixes 2+1 to 11+1 concentrated beverages, including 4+1 high viscosity and 5+1 juices accurately and consistently.
- Quick dispense with 1.0 to 1.5 ounces (29.6 to 44.4 ml) per second flow rate.
- 7" (17.8 cm) cup clearance accommodates most juice containers.
- 18 lb. (8.2 kg) ice bank provides superior cold drink capacity.
- Advanced concentrate pump designed for easy setup, accuracy and durability.
- Service-friendly design including two modular dispense decks makes service fast and simple.
- Both push-button and portion control in the same machine.
- Available with Iced Coffee or Juice display.
- Cold water dispense option available. See models listed on back.
- Door lock standard.
- Remote dispense switch kit model (juice display only) available for self-serve locations..

For current specification sheets and other information, go to www.bunn.com.

Related Products

Easy Clear® EQHP-10
Product No. : 39000.0004

Easy Clear® EQHP-10CRTG
Product No. : 39000.1004

Extended Drip Tray
Product No. : 40789.1000
increases cup clearance to 10.25"
(grill not included, use existing
grill or order 39613.000 below)

**Replacement Grill fits Standard
and Extended Drip Trays**
Product No. : 39613.0000

Ambient Conversion Kit
Product No.: 33699.0001
(one kit required per dispense
station - photo shows
4-dispense station unit with
one container and three
ambient conversion kits)



Refillable Juice Container
Capacity: 1 Gallon
Product No.: 39302.0000



Preventive Maintenance Kit
Product No.: 39690.0000



Remote Dispense Switch Retrofit Kit
(for Push and Hold button models only)
Product No.: 45541.1000
Product No.: 45541.1001 (shown)
with cold water dispense



Model

JDF-4S

Agency Listing



Dimensions & Specifications

Model	Product #	Volts	Amps	Capacity	Cubic Measure	Shipping Weight	Cord Attached
JDF-4S, Lit Door	37300.0004	120	6	3 (12 oz.) drinks/min*	10.3 ft ³	129 lbs.	Yes [†]
JDF-4S, Lit Door (with cold water dispense)	37300.0006	120	6	3 (12 oz.) drinks/min*	10.3 ft ³	129 lbs.	Yes [†]
JDF-4S, Lit Door (iced coffee display)	37300.0020	120	6	3 (12 oz.) drinks/min*	10.3 ft ³	129 lbs.	Yes [†]
JDF-4S, Lit Door (includes remote dispense switch kit, juice display)	37300.0054	120	6	3 (12 oz.) drinks/min*	10.3 ft ³	129 lbs.	Yes [†]

Models include air filter

Refillable Juice Container Product No.: 39302.0000 Capacity: 1 Gallon (sold separately)

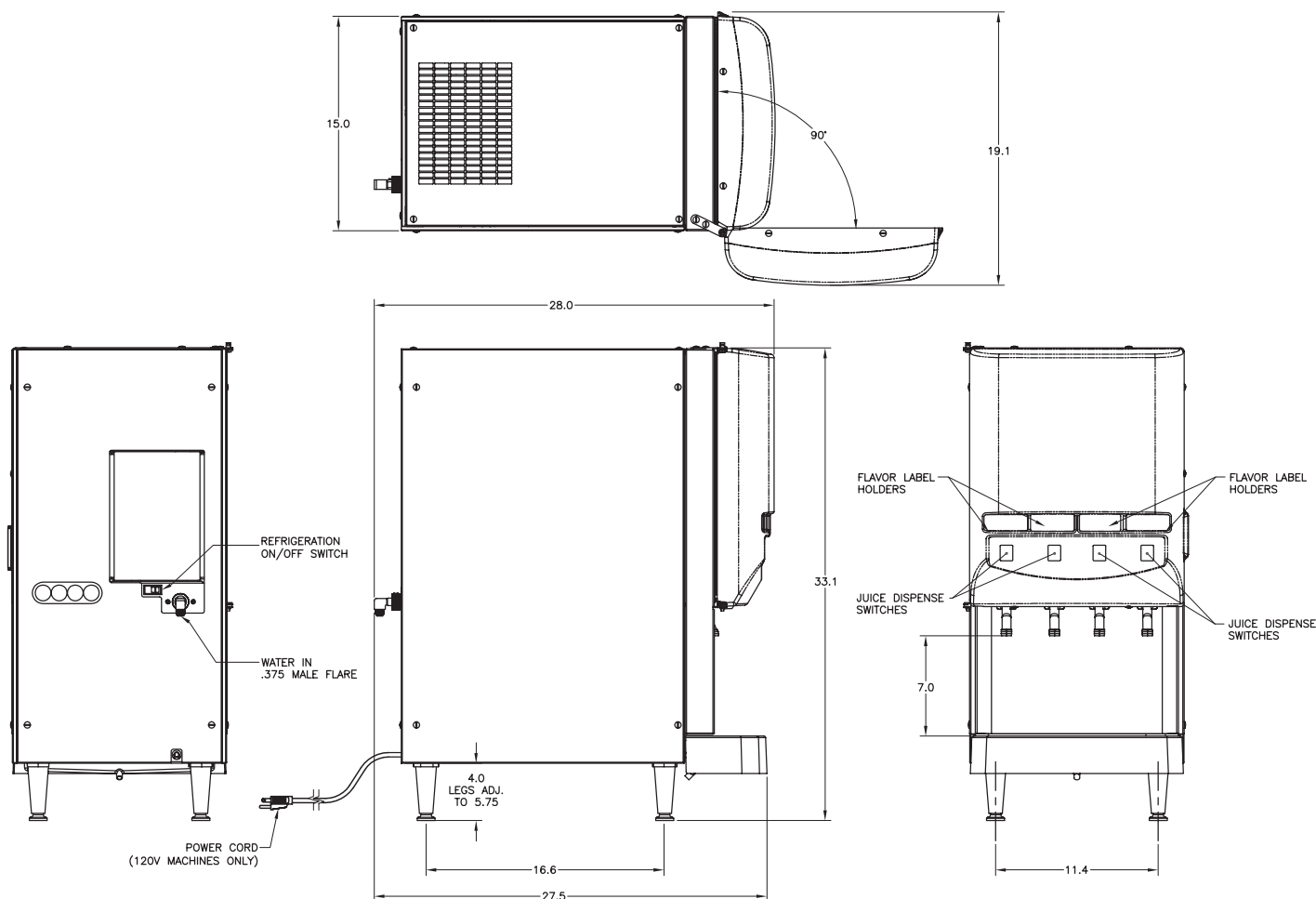
* 75°F (24°C) incoming water for 145 drinks without exceeding 41°F (5°C) finished drink temperature.

[†]Power cord (NEMA 5-15P) 15 Amp-120V machine only.

Electrical: Model requires 2-wire grounded service rated 120V, single phase, 60 Hz.

Plumbing: 20-100 psi (138 - 690 kPa). Machine supplied with $\frac{3}{8}$ " male fitting.

Refrigeration: R-134a refrigerant, 9 oz. (.28 kg), 8 lb. (3.6 kg) ice bank system



Bunn-O-Matic® Corporation - 1400 Stevenson Drive Springfield, Illinois 62703 • 800-637-8606 • 217-529-6601 • Fax 217-529-6644 • www.bunn.com

BUNN® practices continuous product research and improvement. We reserve the right to change specifications and product design without notice. Such revisions do not entitle the buyer to corresponding changes, improvements, additions or replacements for previously purchased equipment.

All dimensions shown in inches.