

Tray and Dish Cart

Cart and Cutlery Rack

Model TDCR12

Cart Only

Model TDC2029

Features & Benefits

- From kitchen to serving line, this cart streamlines self-service operations and provides compact sanitary storage. Holds a variety of plates, trays and cutlery.
- Made of single-molded, seamless, double-wall, high-density polyethylene construction.
- Easy to clean and impact resistant. Won't rust, peel, crack or dent.
- Foamed-in polyurethane insulation adds structural strength and reduces noise.
- Rounded corners protect walls.
- Available with or without detachable 12-Compartment Cutlery Rack CR12.
- Includes 12 flatware cylinders.
- Molded-in handles on both sides ensure easy & comfortable handling.
- Four 6" (15,2 cm) swivel casters, 2 w/ brakes, provide easy maneuvering.
- Convenient vinyl cover included for added protection and more sanitary storage. Cover is not NSF listed.
- No assembly required.
- Available in 6 colors.

Item No. _____

Specifier Identification No. _____

Model No. _____

Quantity _____



TDCR12



TDC2029

Approvals



Tray and Dish Cart

Cart and Cutlery Rack

Model TDCR12

Cart Only

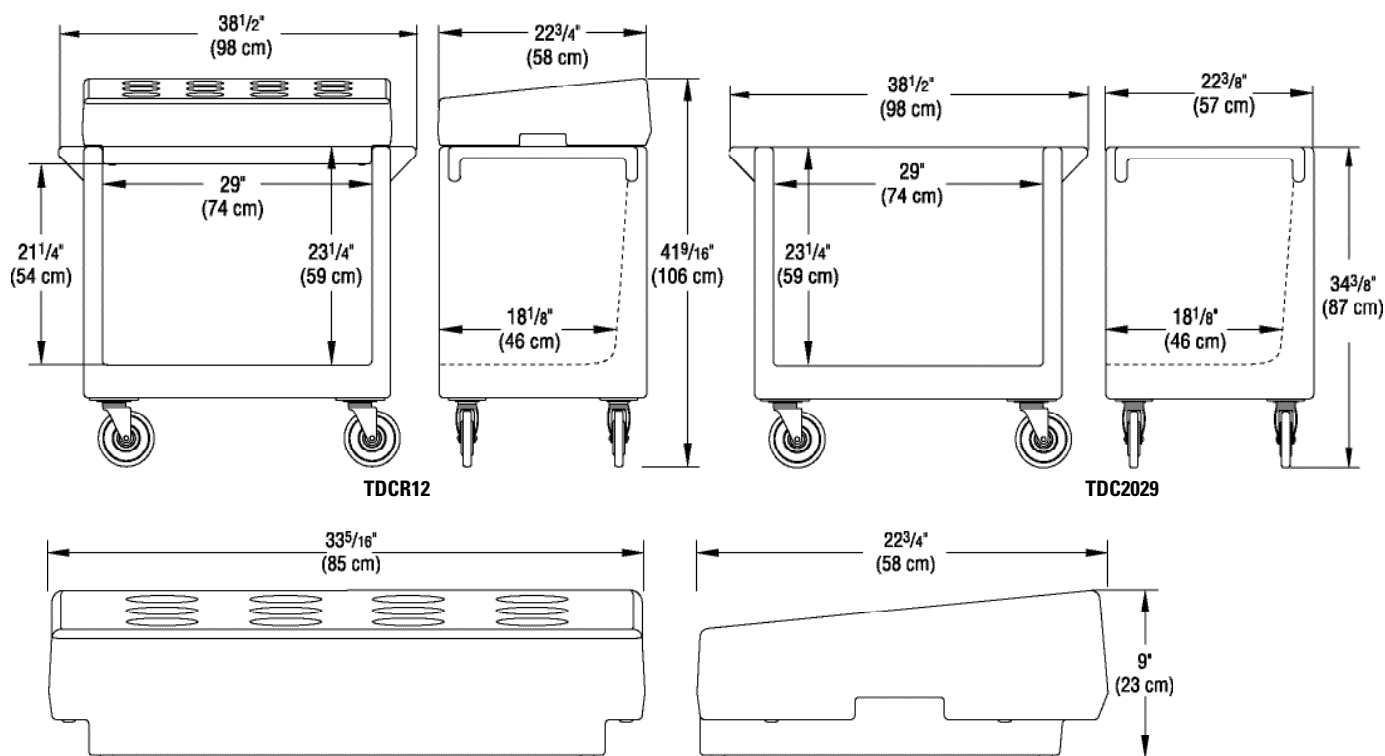
Model TDC2029

Item No. _____

Specifier Identification No. _____

Model No. _____

Quantity _____



CR12 (12-Compartment Cutlery Rack)

Specifications

Dimension Tolerance: +/- 1/4" (0,64 cm)

Code	Description	Exterior Dimensions W x D x H	Case lbs./cube Kg/m ³
TDCR12	Cart & Cutlery Rack Combination	38 1/2" x 22 3/4" x 41 9/16" (98 x 58 x 106 cm)	88,5 (22,23) 40,5 (0,63)
TDC2029	Cart only	38 1/2" x 22 3/8" x 34 3/8" (98 x 57 x 87 cm)	65 (18,80) 29,5 (0,3)

Optional Accessories

12-Compartment Cutlery Rack ☐ CR12

W x D x H 33 5/16" x 22 3/4" x 9" (85 x 58 x 23 cm)

Replacement Vinyl Cover ☐ RDC2029C (1 included with cart)

*Note: Vinyl Cover is not NSF listed.

Standard Colors

- ☐ Slate Blue (401) ☐ Dark Brown (131) ☐ Coffee Beige (157)
☐ Gray (180) ☐ Granite Green (192) ☐ Granite Gray (191)

Architect Specs

The Tray and Dish Cart shall be Cambro Model..., manufactured by Cambro Mfg. Co., Huntington Beach, CA 92648 U.S.A. It shall be single-molded, seamless, double-wall, high density polyethylene and foam injected polyurethane. It shall have rounded corners and molded-in handles. It shall have four each 6" (15,2 cm) swivel casters, 2 w/ brakes, mounted on molded-in impact plates. It shall have a detachable 12-compartment Cutlery Rack. It shall have a vinyl cover included for added protection and sanitary storage and shall be available in 6 colors.

Approvals



© 2008 Cambro Manufacturing Company 5801 Skylab Road, Huntington Beach, California 92647-2056-U.S.A.
 Telephone (1)714 848 1555 Toll Free 800 854 7631 Customer Service 800 833 3003 Printed in USA