



Item #: _____
 Quantity: _____
 Model #: E1-CBD- _____
 Project #: _____

E1 Countertop Dispensers



Model #: E1-CBD-1H

- One-hole countertop dispenser
- Holds one (1) Steril-Sil E1 Insert horizontally
- Non-marking feet
- All welded 304 stainless steel construction
- 17" x 11 1/2" x 7 1/2" dimensions
- Made in the U.S.A.



Model #: E1-CBD-2V

- Two-hole countertop dispenser
- Holds two (2) Steril-Sil E1 Inserts vertically
- Non-marking feet
- All welded 304 stainless steel construction
- 23 1/4" x 16 1/2" x 9 1/4" dimensions
- Made in the U.S.A.



Model #: E1-CBD-3V

- Three-hole countertop dispenser
- Holds three (3) Steril-Sil E1 Inserts vertically
- Non-marking feet
- All welded 304 stainless steel construction
- 34" x 16 1/2" x 9 1/4" dimensions
- Made in the U.S.A.

Product Specification:

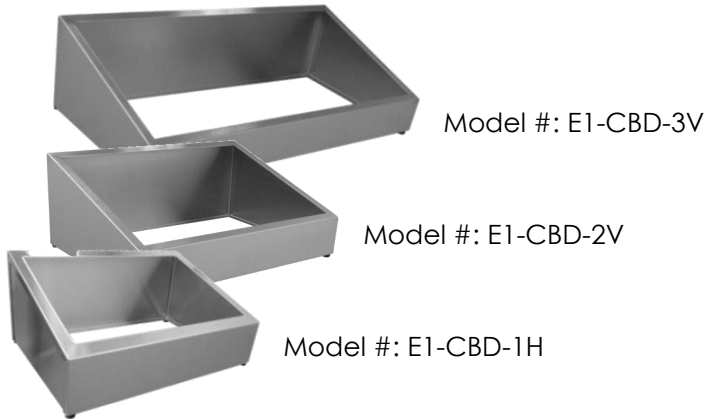
Steril-Sil model #E1-CBD- Countertop Dispenser. Works exclusively with the Steril-Sil E1 Silverware Handling System and accepts Steril-Sil E1 Inserts. Includes four (4) non-marking feet. All welded 304 stainless steel construction. Made in the U.S.A.

Steril-Sil, LLC

1050 Commonwealth Avenue
 Boston, MA 02215
 Phone: 800-784-5537
 Fax: 617-739-5063
 Email: sales@sterilsil.com
 www.sterilsil.com

Notes:

E1 Countertop Dispensers

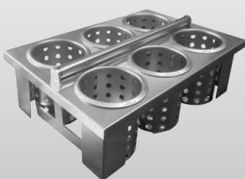


E1 System Countertop Dispenser

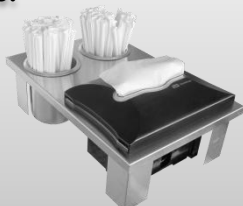
Designed for use with Steril-Sil E1 Silverware Handling System

Model #	Description	Length	Width	Height	Ship #
E1-CBD-1H	1-hole E1 countertop dispenser holds 1 E1 insert horizontally	17"	11.5"	7.5"	6 lbs.
E1-CBD-2V	2-hole E1 countertop dispenser holds 2 E1 inserts vertically	23.25"	16.5"	9.25"	12 lbs.
E1-CBD-3V	3-hole E1 countertop dispenser holds 3 E1 inserts vertically	34"	16.5"	9.25"	16 lbs.

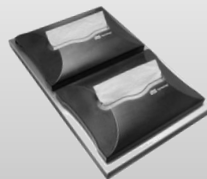
Available Accessories:



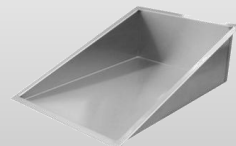
E1-BS-6OE-W
Drop-In Silverware basket



E1-1N5-2SD-1VH
Napkin & Straw Dispenser



E1-N5D-1VH
Dual Napkin Dispenser



E1-FTA-1V
Flat Top Adapter