



# UBB Series Back Bar Refrigerator

**MODELS #178UBB72GHCS**

## CABINET CONSTRUCTION

Heavy-duty stainless steel exterior with a 201 type stainless steel interior features coved corners for easy clean-up. Self-closing, glass doors come standard with locks to protect contents inside. Durable, 1½" thick stainless steel top for prep and drink service.

Foamed-in-place CFC- and HCFC-free polyurethane insulation enhances the structural strength of the cabinet and helps increase energy efficiency.

## REFRIGERATION SYSTEM

Environmentally safe R290 refrigerant. Side-mounted condensing unit positioned for easy maintenance.

## SHELVING

6 epoxy-coated steel shelves included. Each accommodates up to 90 lb.

## MODEL FEATURES

Preprogrammed digital controller features auto-defrost function. LED lighting ensures optimal product visibility. Accommodates three ½ size kegs. Narrow depth design makes this unit ideal for tight bar spaces.

PROJECT: \_\_\_\_\_

MODEL: \_\_\_\_\_ SERIAL#: \_\_\_\_\_

ITEM #: \_\_\_\_\_ QUANTITY: \_\_\_\_\_

APPROVAL: \_\_\_\_\_ DATE: \_\_\_\_\_

## UBB SERIES – STAINLESS STEEL NARROW DEPTH, SOLID DOOR

Optimize space behind your bar.

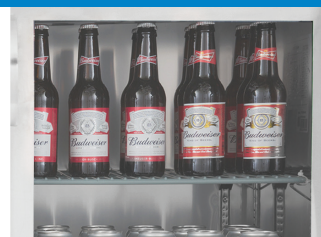
## SPECIAL FEATURES

- Eco-friendly R290 hydrocarbon refrigerant
- Sleek, stainless steel exterior with glass doors
- 201 type stainless steel interior with coved corners maintains temperatures from 33-40°F
- Six epoxy-coated steel shelves accommodate up to 90 lb. each
- Accommodates up to (3) ½ kegs
- Foamed-in-place polyurethane insulation
- Built-in 1½" stainless steel top
- 115V; 1/4 hp
- Stainless steel interior is food rated and marked with the ETL Sanitation mark



## WARRANTY

RESIDENTIAL: Avantco assumes no liability for parts or labor coverage for component failure, factory defect or any other damages for units installed in non-commercial foodservice or residential applications.





# UBB Series Back Bar Refrigerator

MODELS #178UBB72GHCS

## TECHNICAL DATA

### Dimensions

Exterior Dimensions	72¾"W x 24⅞"D x 35⅝"H
Interior Dimensions	60⅞"W x 18½"D x 30½"H
Net Volume	21.6 cu. ft.
Product Capacity	(3) ½ kegs
Net Weight	331 lb.
Gross Weight	374 lb.
Packaging Dimensions	75¼"W x 27½"D x 41¾"H

### Construction

Exterior Material	Type 430 Stainless Steel
Interior Material	Type 201 Stainless Steel
Countertop Type	Type 430 Stainless Steel
Door Type	Glass
Insulation Material	Foamed-in-place polyurethane
Shelf Size	(4) 19" x 18¼" + (2) 20½" x 18⅞"
Shelf Material	Epoxy-coated steel
Shelf Load Capacity	90 lb.

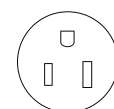
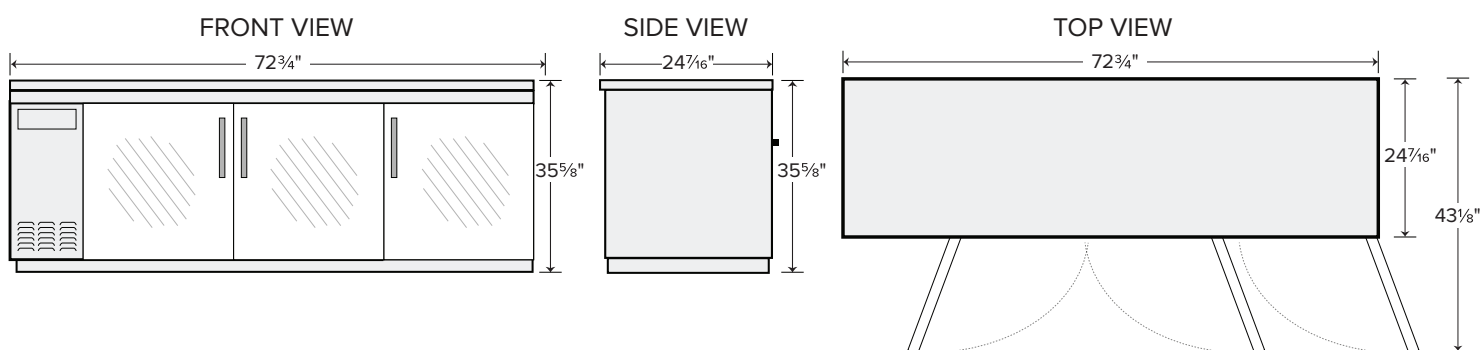
### Cooling

Temperature Range	33 - 40°F
Refrigerant	R290
Max. Ambient Temperature	90°F
Defrosting	Automatic
Temperature Controller	Digital
Horsepower	1/4

### Electrical

Voltage	115
Amps	3.96
Hz	60
Phase	1
Plug Type	NEMA 5-15P
Electrical Cord Length	106"

## PLAN VIEW



NEMA 5-15P