



# UBB Series Galvanized Top Back Bar Refrigerator

MODELS #178UBB48SGTS

## CABINET CONSTRUCTION

Sliding glass doors provide high visibility and the convenience of zero required frontal clearance to open.

Heavy-duty stainless steel exterior with a type 201 stainless steel interior features coved corners for easy clean-up.

Foamed-in-place CFC- and HCFC-free polyurethane insulation enhances the structural strength of the cabinet and helps increase energy efficiency.

## REFRIGERATION SYSTEM

Environmentally safe R290 refrigerant. Side-mounted condensing unit positioned for easy maintenance.

## SHELVING

4 epoxy-coated steel shelves included.

Each accommodates up to 90 lb.

## MODEL FEATURES

Narrow depth design makes this unit ideal for tight bar spaces.

Food rated design makes for convenient storage of garnishes for cocktails.

LED lighting ensures optimal product visibility.

Preprogrammed digital controller features auto-defrost function.

Lower profile perfect for built-in bars.

PROJECT: \_\_\_\_\_

MODEL: \_\_\_\_\_ SERIAL#: \_\_\_\_\_

ITEM #: \_\_\_\_\_ QUANTITY: \_\_\_\_\_

APPROVAL: \_\_\_\_\_ DATE: \_\_\_\_\_

## UBB SERIES - STAINLESS STEEL NARROW DEPTH, SLIDING GLASS DOOR

Keep quality beverages chilled and ready to serve.

## SPECIAL FEATURES

- Galvanized top design is ideal for built-in, under-the-counter bars
- Sliding door design eliminates need for space to open
- Type 201 stainless steel interior with LED lighting, coved corners, and food rated ETL Sanitation mark
- Digital controller features auto-defrost and maintains temperatures between 33-40°F
- LED lighting ensures optimal product visibility
- Accommodates up to (2) ½ kegs
- Eco-friendly R290 hydrocarbon refrigerant
- Sleek and durable type 430 stainless steel exterior with glass doors and a galvanized top
- Four epoxy-coated steel shelves accommodate up to 90 lb. each and are removable for flexibility
- Foamed-in-place polyurethane insulation
- 115V; 1/4 hp



## WARRANTY

RESIDENTIAL: Avantco assumes no liability for parts or labor coverage for component failure, factory defect or any other damages for units installed in non-commercial foodservice or residential applications.



Parts & Labor



Compressor



## TECHNICAL DATA

### Dimensions

Exterior Dimensions	48 <sup>3</sup> / <sub>4</sub> "W x 24 <sup>7</sup> / <sub>16</sub> "D x 34 <sup>1</sup> / <sub>4</sub> "H
Interior Dimensions	36 <sup>1</sup> / <sub>4</sub> "W x 18 <sup>1</sup> / <sub>2</sub> "D x 29"H
Net Volume	13 cu. ft.
Product Capacity	(2) ½ kegs
Net Weight	231 lb.
Gross Weight	282 lb.
Packaging Dimensions	51 <sup>1</sup> / <sub>4</sub> "W x 27 <sup>1</sup> / <sub>2</sub> "D x 41 <sup>3</sup> / <sub>4</sub> "H

### Cooling

Temperature Range	33 - 40°F
Refrigerant	R290
Max. Ambient Temperature	90°F
Defrosting	Automatic
Temperature Controller	Digital
Horsepower	1/5
BTU (BTU/hr)	512

### Construction

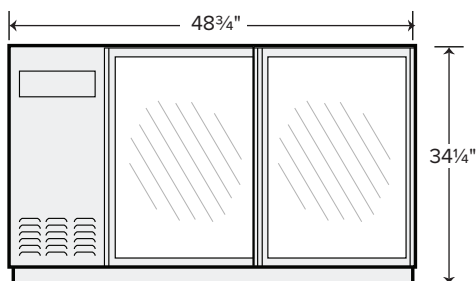
Exterior Material	Type 430 Stainless steel
Interior Material	Type 201 Stainless steel
Countertop Type	Galvanized steel
Door Type	Glass Sliding
Insulation Material	Foamed-in-place polyurethane
Shelf Size	(4) 17 <sup>5</sup> / <sub>8</sub> " x 18 <sup>1</sup> / <sub>8</sub> "
Shelf Material	Epoxy-coated steel
Shelf Load Capacity	90 lb.

### Electrical

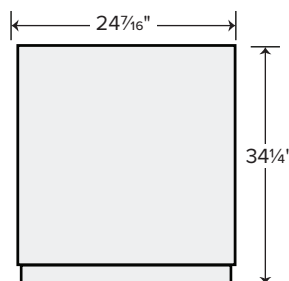
Voltage	115
Amps	2.88
Hz	60
Phase	1
Plug Type	NEMA 5-15P
Electrical Cord Length	106"

## PLAN VIEW

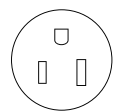
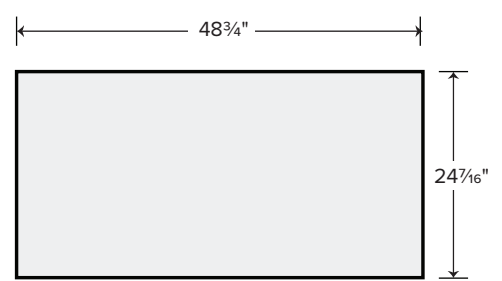
FRONT VIEW



SIDE VIEW



TOP VIEW



NEMA 5-15P