



# UBB Series Galvanized Top Back Bar Refrigerator

MODELS #178UBB48GTG

## CABINET CONSTRUCTION

Heavy-duty black coated steel exterior with a type 201 stainless steel interior features coved corners for easy clean-up. Self-closing, glass doors come standard with locks to protect contents inside.

Foamed-in-place CFC- and HCFC-free polyurethane insulation enhances the structural strength of the cabinet and helps increase energy efficiency.

## REFRIGERATION SYSTEM

Environmentally safe R290 refrigerant. Side-mounted condensing unit positioned for easy maintenance.

## SHELVING

4 epoxy-coated steel shelves included. Each accommodates up to 90 lb.

## MODEL FEATURES

Preprogrammed digital controller features auto-defrost function. LED lighting ensures optimal product visibility. Accommodates two ½ size kegs. Narrow depth design makes this unit ideal for tight bar spaces. Lower profile perfect for built-in bars.

PROJECT: \_\_\_\_\_

MODEL: \_\_\_\_\_ SERIAL#: \_\_\_\_\_

ITEM #: \_\_\_\_\_ QUANTITY: \_\_\_\_\_

APPROVAL: \_\_\_\_\_ DATE: \_\_\_\_\_

## UBB SERIES - NARROW DEPTH, GLASS DOOR

Keep quality beverages chilled and ready to serve.

## SPECIAL FEATURES

- Galvanized top design is ideal for built-in, under-the-counter bars
- Eco-friendly R290 hydrocarbon refrigerant
- Sleek, stainless steel exterior with glass doors for easy viewing and a galvanized top
- Four epoxy-coated steel shelves accommodate up to 90 lb. each and are removable for flexibility
- Accommodates up to (2) ½ kegs
- Foamed-in-place polyurethane insulation
- 115V; 1/5 hp
- Type 201 stainless steel interior with LED lighting, coved corners, and food rated ETL Sanitation mark
- Digital controller features auto-defrost and maintains temperatures between 33-40 degrees Fahrenheit



## WARRANTY

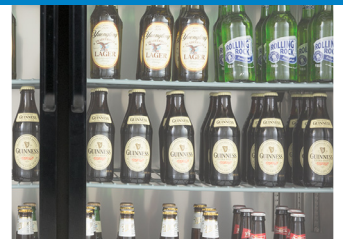
RESIDENTIAL: Avantco assumes no liability for parts or labor coverage for component failure, factory defect or any other damages for units installed in non-commercial foodservice or residential applications.



Parts & Labor



Compressor



## TECHNICAL DATA

### Dimensions

|                      |  |
|----------------------|--|
| Exterior Dimensions  | 48 <sup>3</sup> / <sub>4</sub> "W x 24 <sup>7</sup> / <sub>16</sub> "D x 34 <sup>1</sup> / <sub>4</sub> "H |
| Interior Dimensions  | 36 <sup>1</sup> / <sub>4</sub> "W x 18 <sup>1</sup> / <sub>2</sub> "D x 29"H                               |
| Net Volume           | 13 cu. ft.   |
| Product Capacity     | (2) ½ kegs   |
| Net Weight           | 231 lb.  |
| Gross Weight         | 282 lb.  |
| Packaging Dimensions | 51 <sup>1</sup> / <sub>4</sub> "W x 27 <sup>1</sup> / <sub>2</sub> "D x 41 <sup>3</sup> / <sub>4</sub> "H  |

### Construction

|                     |   |
|---------------------|---|
| Exterior Material   | Black Coated Steel  |
| Interior Material   | Type 201 Stainless steel  |
| Countertop Type     | Galvanized steel  |
| Door Type           | Glass   |
| Insulation Material | Foamed-in-place polyurethane  |
| Shelf Size          | (4) 17 <sup>5</sup> / <sub>8</sub> " x 18 <sup>1</sup> / <sub>8</sub> " |
| Shelf Material      | Epoxy-coated steel  |
| Shelf Load Capacity | 90 lb.  |

### Cooling

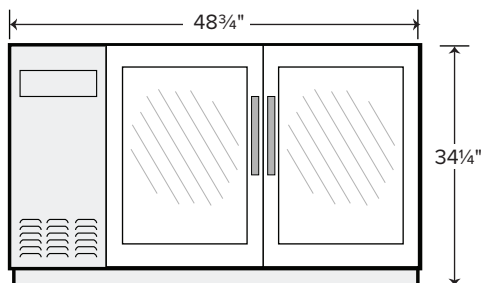
|                          |           |
|--------------------------|-----------|
| Temperature Range        | 33 - 40°F |
| Refrigerant              | R290      |
| Max. Ambient Temperature | 90°F      |
| Defrosting               | Automatic |
| Temperature Controller   | Digital   |
| Horsepower               | 1/5       |

### Electrical

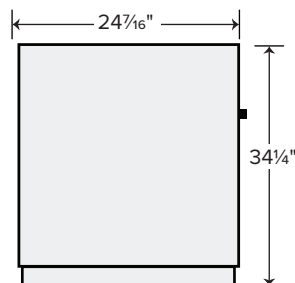
|                        |            |
|------------------------|------------|
| Voltage                | 115        |
| Amps                   | 2.88       |
| Hz                     | 60         |
| Phase                  | 1          |
| Plug Type              | NEMA 5-15P |
| Electrical Cord Length | 106"       |

## PLAN VIEW

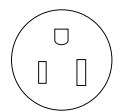
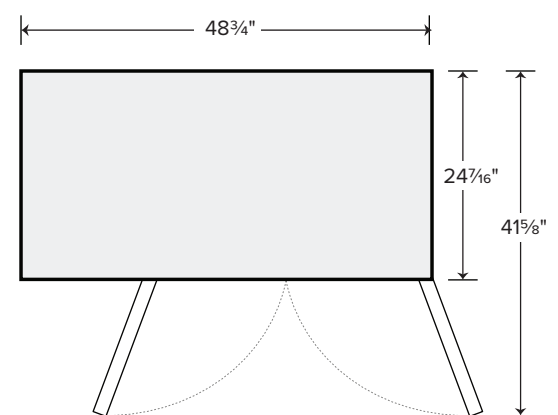
FRONT VIEW



SIDE VIEW



TOP VIEW



NEMA 5-15P