

# UBB Series Back Bar Refrigerator

REFRIGERATION  
**AVANTCO**

[www.AvantcoRefrigeration.com](http://www.AvantcoRefrigeration.com)

**MODELS** #178UBB3HC

## UBB SERIES - STANDARD DEPTH, SOLID DOOR

Keep quality beverages chilled and ready to serve.

### CABINET CONSTRUCTION

Heavy-duty black coated steel exterior with a 304 type stainless steel interior features coved corners for easy clean-up. Self-closing, solid doors come standard with locks to protect contents inside. Durable, 1½" thick stainless steel top for prep and drink service.

Foamed-in-place CFC- and HCFC-free polyurethane insulation enhances the structural strength of the cabinet and helps increase energy efficiency.

### REFRIGERATION SYSTEM

Environmentally safe R290 refrigerant. Side-mounted condensing unit positioned for easy maintenance.

### SHELVING

4 epoxy-coated steel shelves included. Each accommodates up to 90 lb.

### MODEL FEATURES

Preprogrammed digital controller features auto-defrost function. LED lighting ensures optimal product visibility. Standard depth accommodates three ½ size kegs.

## SPECIAL FEATURES

- Eco-friendly R290 hydrocarbon refrigerant
- Sleek, black coated steel exterior with solid doors
- 304 type stainless steel interior with coved corners maintains temperatures from 33-40°F
- 4 epoxy-coated steel shelves accommodate up to 90 lb. each
- Accommodates up to (3) ½ kegs
- Foamed-in-place polyurethane insulation
- Built-in 1½" stainless steel top
- 115V; 1/5 hp
- Stainless steel interior is food rated and marked with the ETL Sanitation mark



## WARRANTY

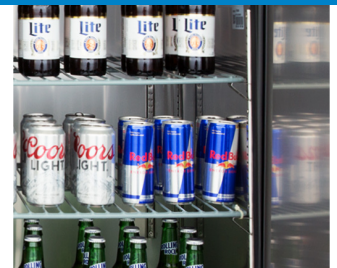
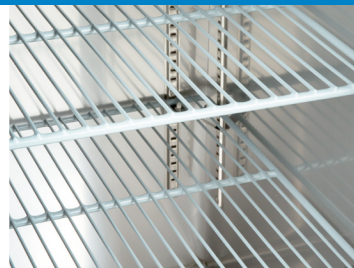
RESIDENTIAL: Avantco assumes no liability for parts or labor coverage for component failure, factory defect or any other damages for units installed in non-commercial foodservice or residential applications.



Parts & Labor



Compressor



# UBB Series Back Bar Refrigerator



[www.AvantcoRefrigeration.com](http://www.AvantcoRefrigeration.com)

**MODELS #178UBB3HC**

## TECHNICAL DATA

### Dimensions

Exterior Dimensions	69 $\frac{1}{8}$ "W x 27 $\frac{3}{4}$ "D x 35 $\frac{5}{8}$ "H
Interior Dimensions	56 $\frac{1}{2}$ "W x 21 $\frac{7}{8}$ "D x 30 $\frac{1}{2}$ "H
Net Volume	23.4 cu. ft.
Product Capacity	(3) $\frac{1}{2}$ kegs
Net Weight	298 lb.
Gross Weight	341 lb.
Packaging Dimensions	71 $\frac{1}{2}$ "W x 30 $\frac{1}{2}$ "D x 41 $\frac{3}{4}$ "H

### Cooling

Temperature Range	33 - 40°F
Refrigerant	R290
Max. Ambient Temperature	90°F
Defrosting	Automatic
Temperature Controller	Digital
Horsepower	1/5

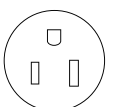
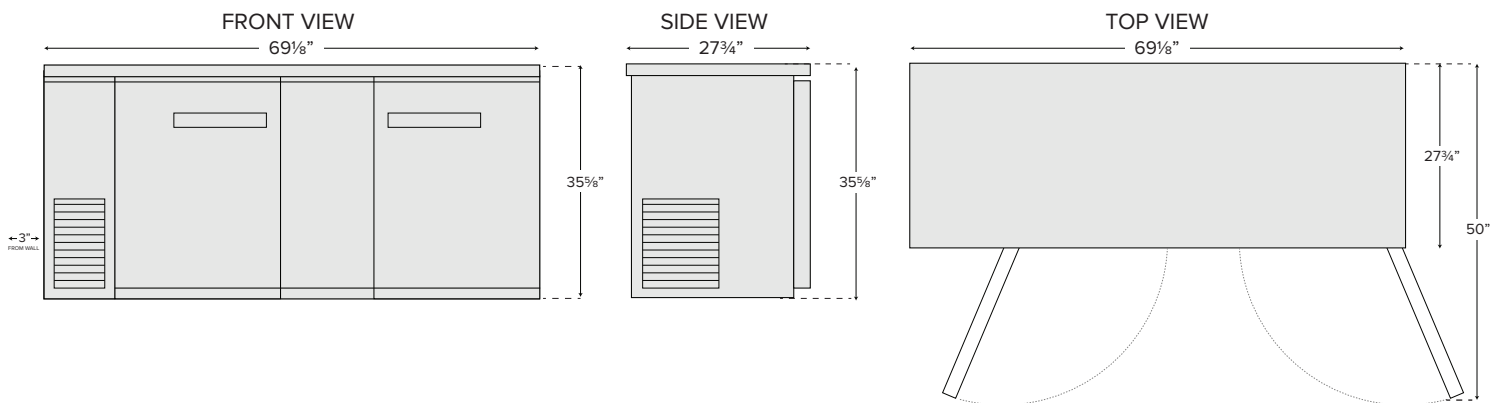
### Construction

Exterior Material	Black Coated Steel
Interior Material	Type 304 Stainless Steel
Countertop Type	Type 304 Stainless Steel
Door Type	Solid
Insulation Material	Foamed-in-place polyurethane
Shelf Size	(4) 27 $\frac{3}{4}$ " x 21 $\frac{1}{2}$ "
Shelf Material	Epoxy-coated steel
Shelf Load Capacity	90 lb.

### Electrical

Voltage	115
Amps	3.6
Hz	60
Phase	1
Plug Type	NEMA 5-15P
Electrical Cord Length	106"

## PLAN VIEW



NEMA 5-15P