

UBB Series Back Bar Refrigerator



www.AvantcoRefrigeration.com

MODELS #178UBB2GHCS

UBB SERIES - STANDARD DEPTH, GLASS DOOR

Keep quality beverages chilled and ready to serve.

CABINET CONSTRUCTION

Heavy-duty stainless steel exterior with a 201 type stainless steel interior features coved corners for easy clean-up. Self-closing, glass doors come standard with locks to protect contents inside. Durable, 1½" thick stainless steel top for prep and drink service.

Foamed-in-place CFC- and HCFC-free polyurethane insulation enhances the structural strength of the cabinet and helps increase energy efficiency.

REFRIGERATION SYSTEM

Environmentally safe R290 refrigerant. Side-mounted condensing unit positioned for easy maintenance.

SHELVING

4 epoxy-coated steel shelves included. Each accommodates up to 90 lb.

MODEL FEATURES

Preprogrammed digital controller features auto-defrost function. LED lighting ensures optimal product visibility. Standard depth accommodates two ½ size kegs. Food rated design makes for convenient storage of garnishes for cocktails.

SPECIAL FEATURES

- Eco-friendly R290 hydrocarbon refrigerant
- Sleek, type 430 stainless steel exterior with solid doors
- 201 type stainless steel interior with coved corners maintains temperatures from 33-40°F
- Four epoxy-coated steel shelves accommodate up to 90 lb. each
- Accommodates up to (2) ½ kegs
- Foamed-in-place polyurethane insulation
- Built-in 1½" stainless steel top
- 115V; 1/5 hp
- Stainless steel interior is food rated and marked with the ETL Sanitation mark



WARRANTY

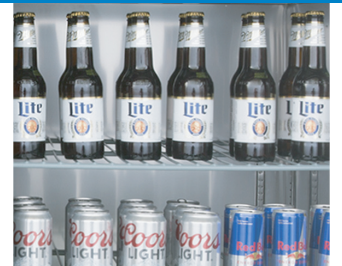
RESIDENTIAL: Avantco assumes no liability for parts or labor coverage for component failure, factory defect or any other damages for units installed in non-commercial foodservice or residential applications.



Parts & Labor



Compressor



UBB Series

Back Bar Refrigerator



MODELS #178UBB2GHCS

www.AvantcoRefrigeration.com

TECHNICAL DATA

Dimensions

Exterior Dimensions	58 ⁷ / ₈ "W x 29 ¹ / ₈ "D x 36 ¹ / ₄ "H
Interior Dimensions	46 ¹ / ₄ "W x 22 ¹ / ₂ "D x 30 ¹ / ₂ "H
Net Volume	19.4 cu. ft.
Product Capacity	(2) ½ kegs
Net Weight	258 lb.
Gross Weight	297 lb.
Packaging Dimensions	61 ¹ / ₄ "W x 30 ¹ / ₂ "D x 41 ³ / ₄ "H

Cooling

Temperature Range	33 - 40°F
Refrigerant	R290
Max. Ambient Temperature	90°F
Defrosting	Automatic
Temperature Controller	Digital
Horsepower	1/5
BTU (BTU/hr)	512

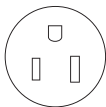
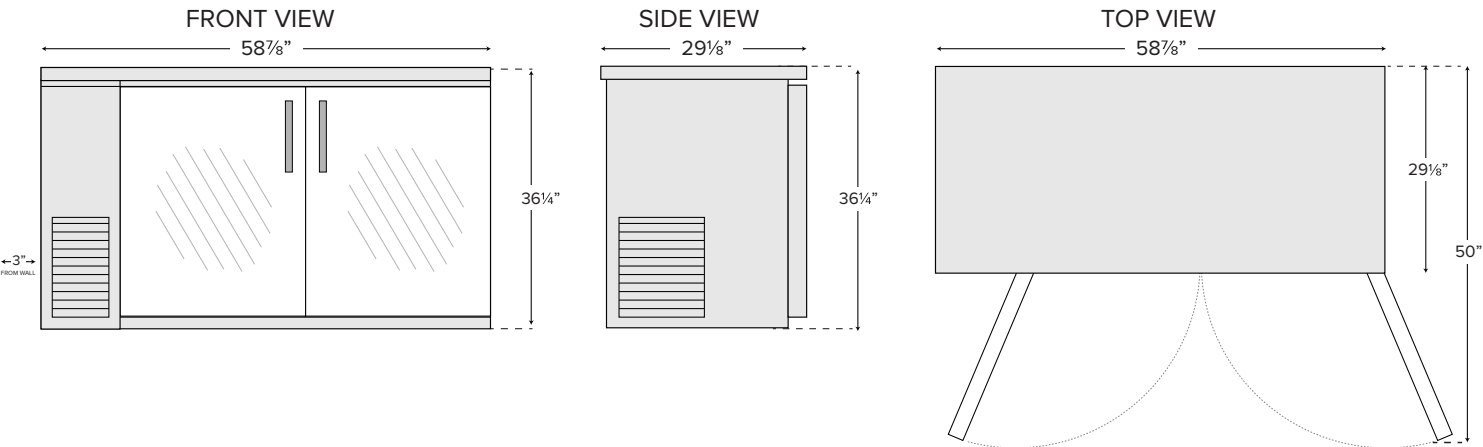
Construction

Exterior Material	Type 430 Stainless Steel
Interior Material	Type 201 Stainless Steel
Countertop Type	Type 430 Stainless Steel
Door Type	Glass
Insulation Material	Foamed-in-place polyurethane
Shelf Size	(4) 22 ¹ / ₂ " x 21 ¹ / ₂ "
Shelf Material	Epoxy-coated steel
Shelf Load Capacity	90 lb.

Electrical

Voltage	115
Amps	2.88
Hz	60
Phase	1
Plug Type	NEMA 5-15P
Electrical Cord Length	106"

PLAN VIEW



NEMA 5-15P