

PRODUCT:

QUANTITY:

Models:  CW-1  CW-2  CW-3  CW-4  CW-5  CW-6  
ITEM:

## Designed Smart

### Compact Design with High Output

The Drop-In Cold Well provides an economic solution to the cost of in-counter refrigeration.

- Uses R-134a refrigerant.
- Can hold cold food at 34°F to 40°F for extended periods.
- Interior temperature is factory set, but can be field adjusted depending on unit's application.

## APW Wyott Design Features

- Holds standard steam table pans
- Energy saving
- Field adjustable temperature
- Stainless steel construction with fully insulated walls
- Supplied with 6 ft. cord and NEMA 5-15P plug
- Drain provided with stopper

## Option and Accessories

- COMP-5 5-year compressor warranty
- Pan dividers standard; special adaptor top for pans available



Model: Drop-In Cold Well

## Reliability backed by APW Wyott's Warranty

APW Wyott Drop-In Cold Wells are backed by a 1-year parts and labor warranty, including on-site service calls within 50 miles of authorized service technicians.

## Certified by the following agencies:

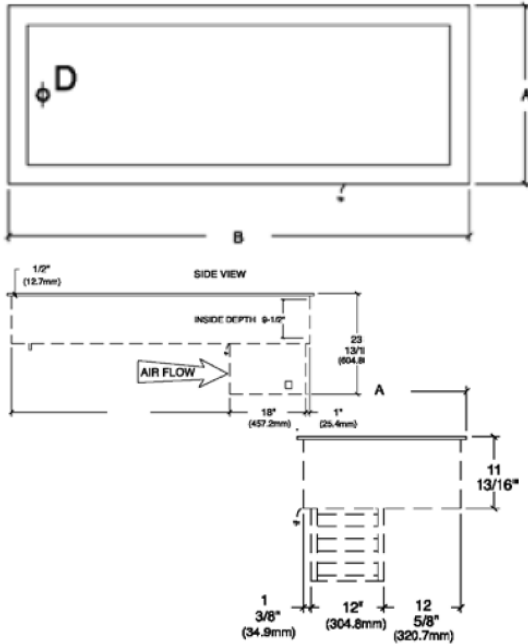


See reverse side for product specifications.

PRODUCT:

QUANTITY:

Models:  CW-1  CW-2  CW-3  CW-4  CW-5  CW-6  
ITEM:



## PRODUCT SPECIFICATIONS

### Construction:

Interior is stainless steel; exterior is aluminized steel

Freight Class: 70

FOB: Allen, TX 75013

INSIDE DIMENSIONS		
Model	Width	Length
CW-1	13 1/2" (34.3cm)	22" (55.9cm)
CW-2	22" (55.9cm)	26 13/16" (68.1cm)
CW-3	22" (55.9cm)	40 1/8" (101.9cm)
CW-4	22" (55.9cm)	53 7/16" (135.7cm)
CW-5	22" (55.9cm)	66 3/4" (169.5cm)
CW-6	19 7/8"	80 1/2"

## Electrical SPECIFICATIONS

MODEL	VOLTS	Hz	PHASE	AMPS	COMPRESSOR	CHARGE
CW-1	120	60	1	4	1/5 HP	8.75 oz.-R134A
CW-1	230	50	1	2	1/5 HP	8.75 oz.-R134A
CW-2	120	60	1	5	1/4 HP	9.50 oz.-R134A
CW-2	230	50	1	2	1/4 HP	9.50 oz.-R134A
CW-3	120	60	1	5	1/4 HP	10.0 oz.-R134A
CW-3	230	50	1	2	1/4 HP	10.0 oz.-R134A
CW-4	120	60	1	5	1/4 HP	11.0 oz.-R134A
CW-4	230	50	1	2	1/4 HP	11.0 oz.-R134A
CW-5	120	60	1	5.5	1/3 HP	12.0 oz.-R134A
CW-5	230	50	1	2.8	1/3 HP	12.0 oz.-R134A
CW-6	115	60	1	15.3	1/3 HP	54 oz. - R404A

## DIMENSIONS

MODEL	DIMENSIONS	RECOMMENDED CUT OUT
CW-1	28"L x 19 1/2"W x 23 13/16"H	26 1/2" x 18"
CW-2	32 13/16"L x 28"W x 23 13/16"H	26 1/2" x 31 5/16"
CW-3	46 1/8"L x 28"W x 23 13/16"H	26 1/2" x 44 5/8"
CW-4	59 7/16"L x 28"W x 23 13/16"H	26 1/2" x 57 15/16"
CW-5	72 3/4"L x 28"W x 23 13/16"H	26 1/2" x 71 1/4"
CW-6	86"L x 25 3/8" x 24.5"H	23 7/8" x 84 1/2"

\*APW Wyott reserves the right to modify specifications or discontinue models without incurring obligation.