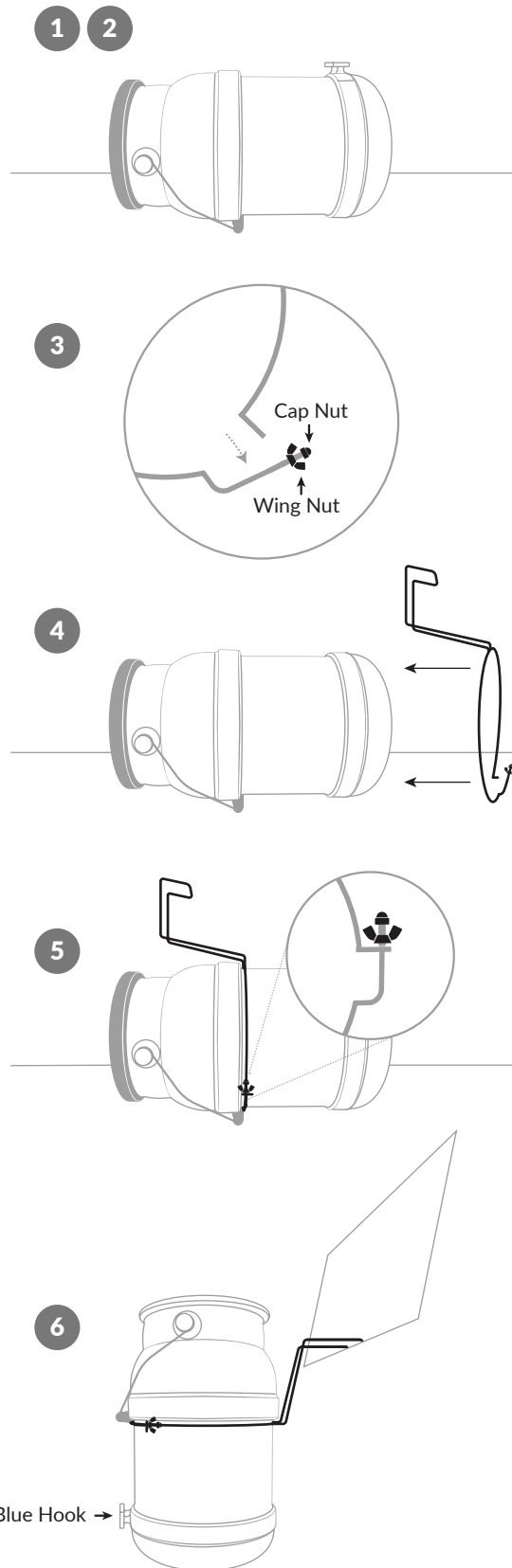


Wire Hanger for Choice 5 Gallon Ice Bucket (176ICEBUCKET) Installation Instructions



Installation

- 1 To install the optional wire Choice ice hanger on the 5lb Choice ice bucket, start with making sure the ice bucket is empty.
- 2 Place the ice bucket on top of a counter and lay it down on its' side.
- 3 Unscrew the wing nut to loosen the hanger enough where you can push the left side of the wire out from the U-shaped slot, but do not completely remove the wing nut or cap nut.
- 4 Starting at the base of the bucket, pull the hanger over the ice bucket.
- 5 Work the hanger up the ice bucket so that the hanger is positioned under the top rib of the bucket. Reconnect the hanger together by securing the U-shaped slot to the section left of the wing nut. Tighten the wing nut so that the caddy is securely installed on the ice bucket.
- 6 Before placing ice inside the unit, test the bucket by placing the hanging arm on your ice machine. If secure, proceed with filling the bucket with ice.

Please note: If you plan on using the wall mount bracket to store the ice bucket when not in use, make sure the blue hook is positioned on the opposite side of the hanger extension.