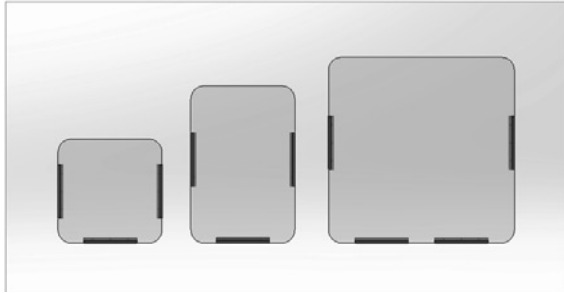




Installation Instructions

Mounted Safety Guard



Item No.	Description
SS2424	Safety Guard Mounted, Acrylic, 23.5" x 23.5"
SS2436	Safety Guard Mounted, Acrylic, 23.5" x 35.5"
SS4042	Safety Guard Mounted, Acrylic, 40" x 42"

INSTALLATION

Kit Contents

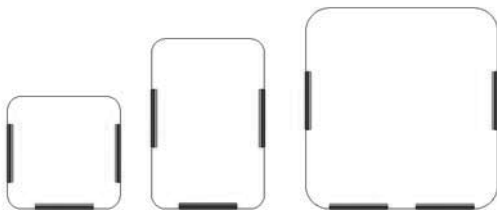
Part	Quantity per Kit		
	SS2424	SS2436	SS4042
Acrylic Guard	1	1	1
Aluminum Channel	3	3	4
Double Sided Adhesive Tape	6	6	8
Screws	9	9	12

Tools You Will Need

- Pliers
- Drill and 3/32" drill bit
- Flat head screwdriver
- Isopropyl Alcohol

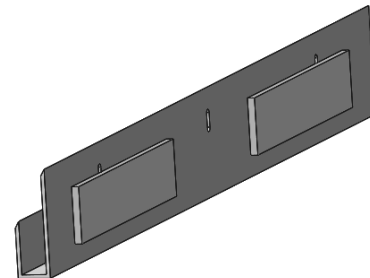
For maximum flexibility, either use the double-sided adhesive tape applied to the reverse side of the aluminum channels or use the provided screws to attach the channels. If you install the guard with screws, use three screws per 12" section of channel.

Determine where the channels will be located. For the 40" x 42" guard use two channels across the bottom to support the guard. For smaller sizes, use one channel across the bottom. See suggested channel arrangement below.



INSTALLING WITH DOUBLE SIDED TAPE

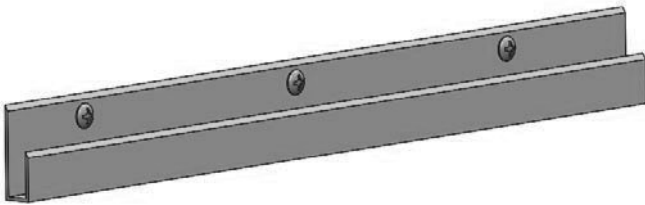
1. Clean the aluminum channels and the surfaces where the channels will be attached with isopropyl alcohol prior to installing. Allow them to air dry.
2. Determine the location of the bottom channel/s to be installed and make a level mark on the mounting surface.
3. Remove the backing from one side of the tape only. Apply two pieces of the tape to the back surface of the channel and press firmly against the channel.



4. Remove the backing from the tape, align the channel with the level marks and press it against the mounting surface.
5. Set the guard into the bottom channel/s. Slide a channel onto each side of the safety guard and mark location to be mounted. Remove the side channels.
6. Repeat step 2 for each side channel.
7. Remove the protective paper backing from both sides of the acrylic guard and set the guard back into the bottom channel.
8. Remove the backing from all of the side channel tape. Leaning the guard slightly forward so that the tape does not contact the mounting surface, slide both side channels into position.
9. With the guard and channels in place, firmly press against the channels so that the tape adheres to the mounting surface.

INSTALLING WITH PROVIDED SCREWS

1. Determine where the channels will be located. For the 40" x 42" guard use two channels across the bottom to support the guard.
2. Determine the location of the bottom channel/s to be installed and make a level mark on the mounting surface.
3. While holding the channel in place, locate the center of the channel and drill a hole through the channel and into the mounting surface using a 3/32" drill bit. Insert a screw into the hole and tighten channel to mounting surface, making sure that the channel is level.
4. Drill two additional holes in back of channel 4" on either side of center hole. Insert and tighten two remaining screws. Verify that channel is securely fastened..



5. Place the guard into the bottom channel/s.
6. Slide the side channels onto the guard and mark the location to be mounted. Remove the guard temporarily and set aside.
7. Place the channel 1/8" outward from the mark to allow the guard to be easily slid into the channels after they are mounted.
8. Repeat steps 3 and 4 for each side channel.
9. Check to make sure that all channels are securely fastened to the mounting surface.
10. Remove the protective paper backing from both sides of the acrylic guard.
11. Lift the guard above the side channels and slide the guard down until it is fully engaged in the bottom channels.

CLEAN AND CARE

- Always use a clean soft lint free cloth or micro fiber cloths along with a cleaning solution or products specifically made for cleaning Plexiglas® and acrylic plastic.
- Clean Plexiglas and acrylic with a neutral cleaner such as a solution of warm water and a small amount of dish detergent.
- Recommended cleaners for Plexiglas® and acrylic include: Novus® #1, Plexiclear, and Brilliance.

What Not to Do

- **Do not** use cleaners containing ammonia, alcohol, acetone or dry cleaning products. Cleaners with these chemicals will damage Plexiglas®, acrylic and other plastics.
- **Do not** use paper towels, abrasive materials, scratching cleansers, razor blades, brushes, steel wool or scouring pads, such as Scotch Brite® pads.
- **Do not** use WD-40® or petroleum, industrial or commercial cleaning products.

Removing Minor Scratches

- Fine scratches can be removed with a specialized mild abrasive polish such as Novus® #2, or Novus® #3. Heavier scratches may require sanding and buffing. Hand sand with series of sandpapers with increasingly finer grits (250, 400, 600). Then use a buffing wheel and buffing compound.



www.vollrath.com

The Vollrath Company, L.L.C.

1236 North 18th Street
Sheboygan, WI 53081-3201 U.S.A.
Main Tel: 800.624.2051 or 920.457.4851
Main Fax: 800.752.5620 or 920.459.6573
Customer Service: 800.628.0830
Canada Customer Service: 800.695.8560

Technical Services

techservicereps@vollrathco.com
Induction Products: 800.825.6036
Countertop Warming Products: 800.354.1970
Toasters: 800-309-2250
All Other Products: 800.628.0832