



CATALOG OF REPLACEMENT PARTS

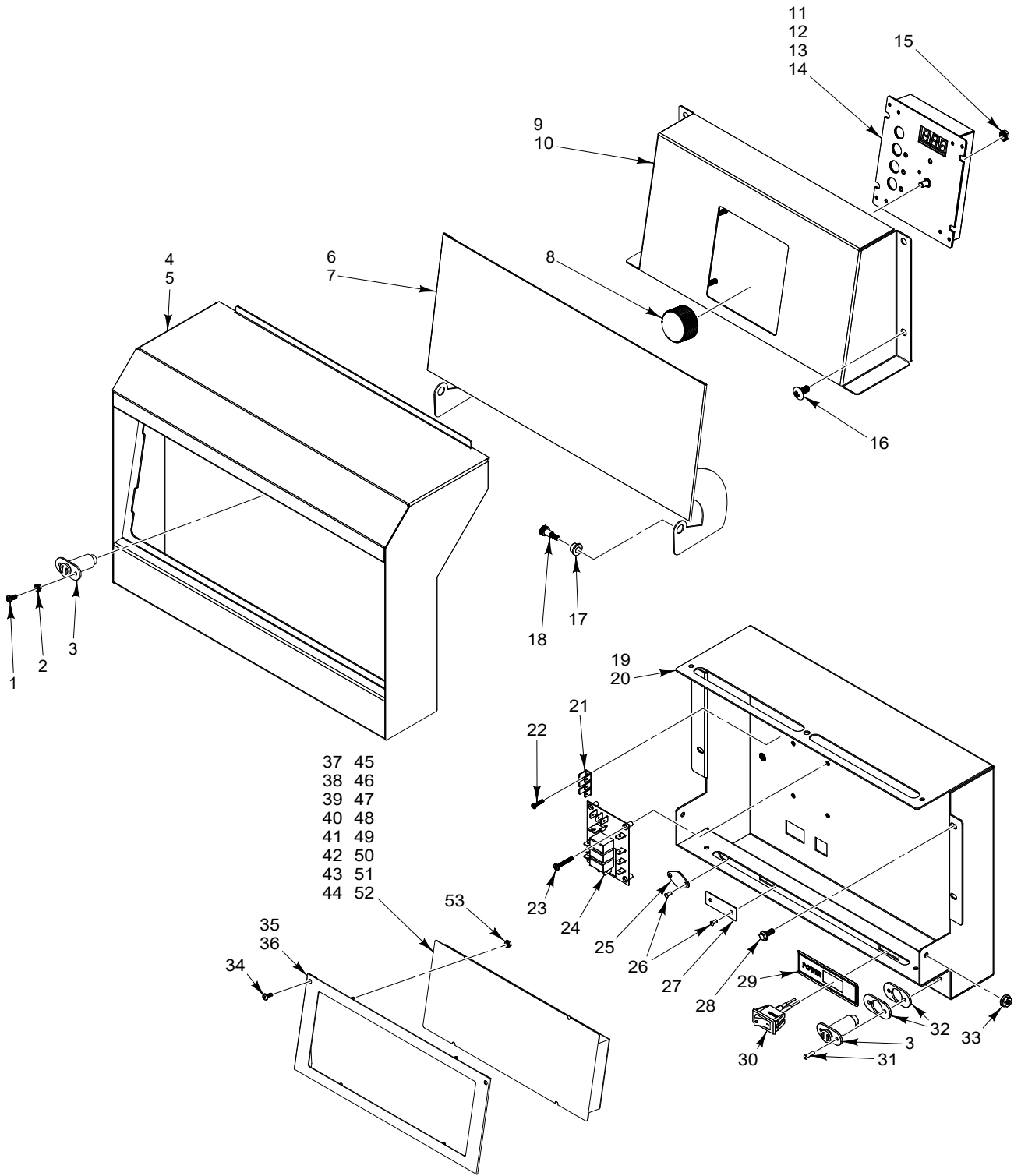
VHG SERIES FRYERS



- | | |
|---------|---------|
| 1VHG50A | 1VHG75A |
| 1VHG75A | 2VHG50A |
| 2VHG50A | 2VHG75A |
| 2VHG75A | 3VHG50A |
| 3VHG50A | 3VHG75A |
| 3VHG75A | 4VHG50A |
| 4VHG50A | 4VHG75A |
| 4VHG75A | 1VHG50C |
| 1VHG50C | 1VHG75C |
| 1VHG75C | 2VHG50C |
| 2VHG50C | 2VHG75C |
| 2VHG75C | 3VHG50C |
| 3VHG50C | 3VHG75C |
| 3VHG75C | 4VHG50C |
| 4VHG50C | 4VHG75C |
| 4VHG75C | 1VHG50D |
| 1VHG50D | 1VHG75D |
| 1VHG75D | 2VHG50D |
| 2VHG50D | 2VHG75D |
| 2VHG75D | 3VHG50D |
| 3VHG50D | 3VHG75D |
| 3VHG75D | 4VHG50D |
| 4VHG50D | 4VHG75D |
| 4VHG75D | |

Table of Contents

4	CONTROLS (SINGLE) (BEFORE S/N 65026221)
6	CONTROLS (SINGLE) (STARTING S/N 65026221)
8	CONTROLS (MULTIPLE) (BEFORE S/N 65026221)
12	CONTROLS (MULTIPLE) (STARTING S/N 65026221)
14	POWER BOX
16	PANELS (BEFORE S/N 65026221)
18	PANELS (STARTING S/N 65026221)
20	FILTRATION (SINGLE) (BEFORE S/N 65026221)
22	FILTRATION (MULTIPLE) (BEFORE S/N 65026221)
24	FILTRATION (STARTING S/N 65026221)
26	COMBUSTION
28	WIRE HARNESSSES
30	RECOMMENDED SPARE PARTS LIST

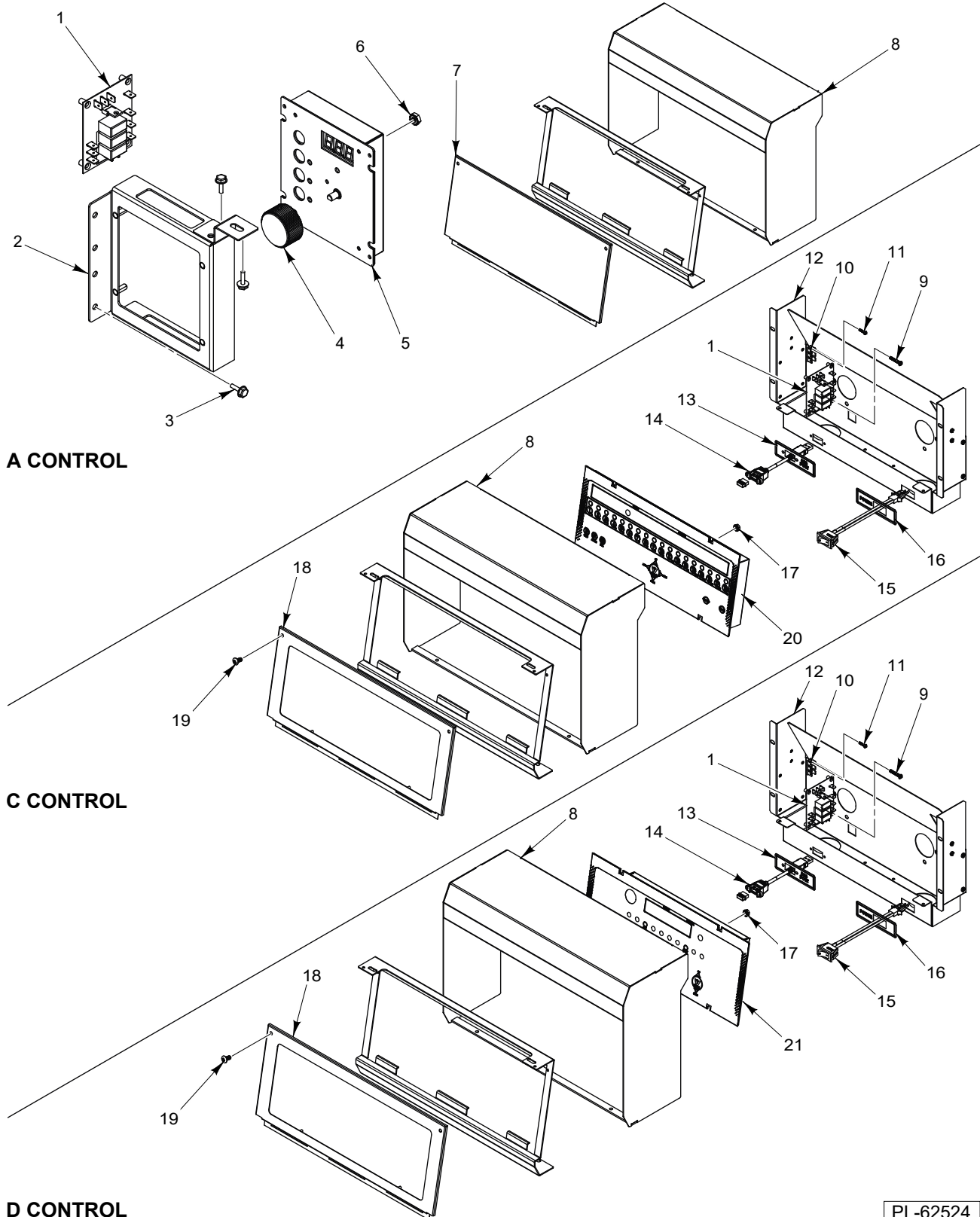


PL-61453

**CONTROLS
(SINGLE)
(BEFORE S/N 65026221)**

**CONTROLS
(SINGLE)
(BEFORE S/N 65026221)**

ILLUS.	PART NO.	NAME OF PART	AMT.
PL-61453			
1	00-730030	Mach. Screw 6-32 x 3/4 In.	2
2	NS-046-89	Nut Assy. 6-32 Hex KEPS	2
3	00-976750-00026	Magnet - Popper	2
4	00-976711-0AS45	Bullnose (Single) (VHG50).....	1
5	00-976716-0AS75	Bullnose (Single) (VHG75).....	1
6	00-976711-0004A	Door - Control Panel (VHG50).....	1
7	00-976716-0004A	Door - Control Panel (VHG75).....	1
8	00-976722-00004	Knob - Control	1
9	00-976711-0007A	Mount - Control Panel (VHG50) (A-Control).....	1
10	00-976716-0007A	Mount - Control Panel (VHG75) (A-Control).....	1
11	00-976722-00001	Overlay (A-Control) (W/ Filtration)	1
12	00-976722-00002	Overlay (A-Control) (W/O Filtration)	1
13	00-976722-00005	Kit - A-Control (W/ Filtration) (Incls. Controller, Overlay, & Knob)	AR
14	00-976722-00006	Kit - A-Control (W/O Filtration) (Incls. Controller, Overlay, & Knob)	AR
15	00-730534	Nut 10-24 Hex KEPS	4
16	00-723369	Mach. Screw 1/4-20 x 1/2 Phil. Truss Hd.	4
17	00-976750-00032	Bearing 1/4 In.	2
18	SC-132-86	Screw 10-24, 1/4 x 5/16	2
19	00-976711-00003	Box - Control Panel (VHG50).....	1
20	00-976716-00003	Box - Control Panel (VHG75).....	1
21	00-419317	Terminal - Stationary	1
22	SC-018-55	Mach. Screw 4-40 x 1/2 Phil. Pan Hd.	2
23	00-944267	Screw 6-32 x 13/16 Phil. Pan Hd.	4
24	00-427759-00003	Board - Interface	1
25	00-976750-00028	Magnet	1
26	RS-032-77	Rivet	2
27	00-959000-00003	Plate - Cover	1
28	SD-032-07	Self-Tapping Screw 10-24 x 1/2 Hex. Hex Washer Hd., Type TT	4
29	00-428906-00001	Overlay - Power	1
30	00-427755-000G1	Rocker Switch Assy.	1
31	RS-032-77	Rivet	2
32	00-976750-00027	Spacer - Magnet	2
33	NS-048-07	Lock Nut 10-24 Hex Special	2
34	00-730228	Self-Tapping Screw 10-24 x 1/2 Phil. Truss Hd.	2
35	00-976711-004CD	Plate - Control Mount (VHG50) (C/D-Control).....	1
36	00-976716-004CD	Plate - Control Mount (VHG75) (C/D-Control).....	1
37	00-976705-00005	Kit - D-Control (W/ Filtration) (Incls. Controller & Overlay)	AR
38	00-976705-00006	Kit - D-Control (W/O Filtration) (Incls. Controller & Overlay)	AR
39	00-976705-00001	Overlay (W/ Filtration) (D Control).....	1
40	00-976705-00002	Overlay (W/O Filtration) (D Control).....	1
41	00-976706-00009	Kit - C-Control (W/ Filtration) (1-18) (Incls. Controller & Overlay)	AR
42	00-976706-00010	Kit - C-Control (W/O Filtration) (1-18) (Incls. Controller & Overlay)	AR
43	00-976706-00011	Kit - C-Control (W/ Filtration) (1-9) (Incls. Controller & Overlay)	AR
44	00-976706-00012	Kit - C-Control (W/O Filtration) (1-9) (Incls. Controller & Overlay)	AR
45	00-976706-00013	Kit - C-Control (W/ Filtration) (1-6) (Incls. Controller & Overlay)	AR
46	00-976706-00014	Kit - C-Control (W/O Filtration) (1-6) (Incls. Controller & Overlay)	AR
47	00-976706-00001	Overlay (W/ Filtration) (1-18) (C Control).....	1
48	00-976706-00002	Overlay (W/O Filtration) (1-18) (C Control).....	1
49	00-976706-00003	Overlay (W/ Filtration) (1-9) (C Control).....	1
50	00-976706-00004	Overlay (W/O Filtration) (1-9) (C Control).....	1
51	00-976706-00005	Overlay (W/ Filtration) (1-6) (C Control).....	1
52	00-976706-00006	Overlay (W/O Filtration) (1-6) (C Control).....	1
53	00-730534	Nut 10-24 Hex KEPS	4

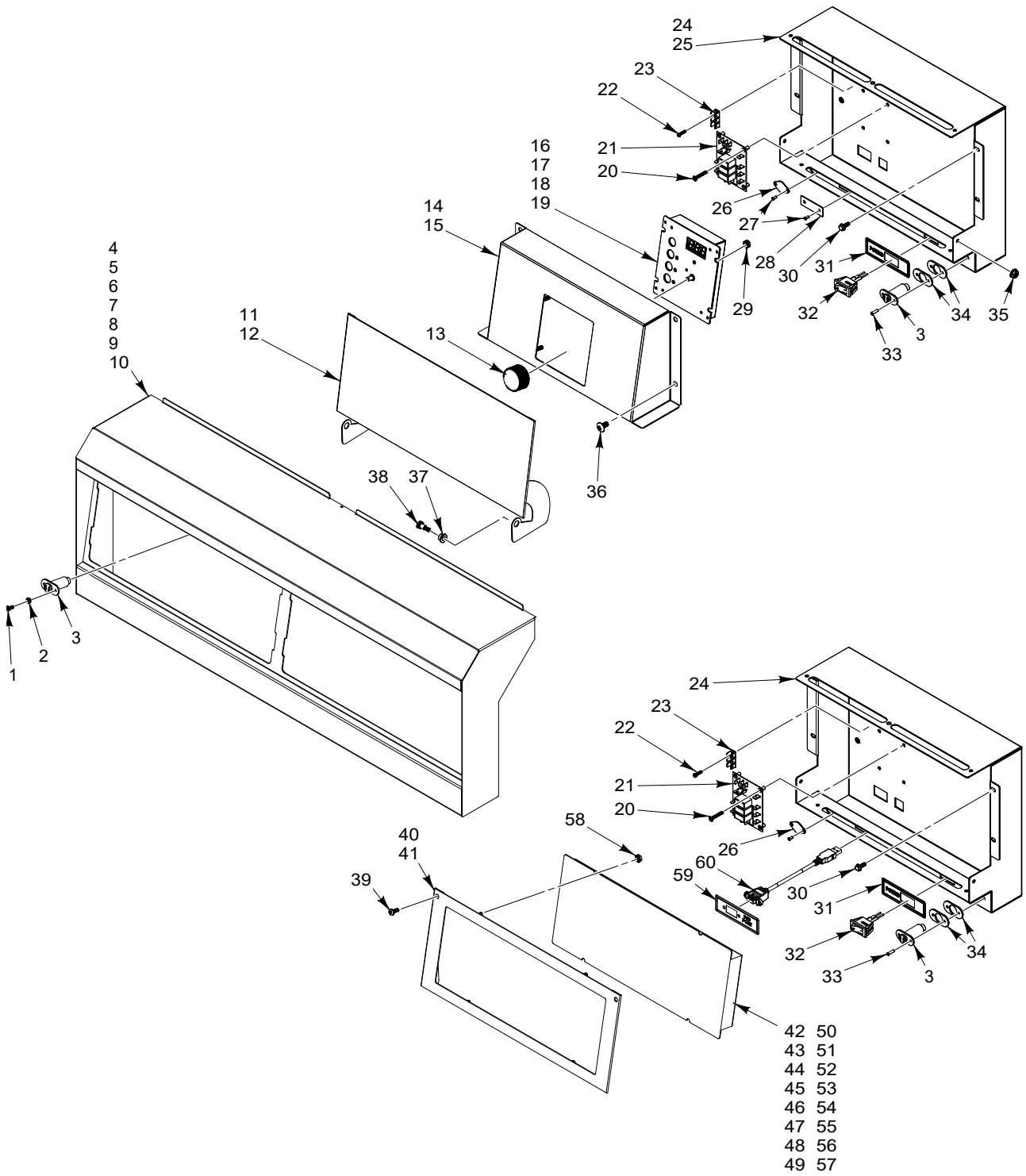


PL-62524

**CONTROLS
(SINGLE)
(STARTING S/N 65026221)**

**CONTROLS
(SINGLE)
(STARTING S/N 65026221)**

ILLUS.	PART NO.	NAME OF PART	AMT.
PL-62524			
1	00-427759-00003	Board - Interface	1
2	00-976722-00008	Bracket - A-Control Mount	1
3	SD-032-07	Self-Tapping Screw 10-24 x 1/2 Hex. Hex Washer Hd., Type TT	4
4	00-976722-00004	Knob - Control	1
5	00-976722-00005	Kit - A-Control (W/ Filtration) (Incls. Controller, Overlay, & Knob)	AR
5	00-976722-00006	Kit - A-Control (W/O Filtration) (Incls. Controller, Overlay, & Knob)	AR
5	00-976722-00001	Overlay (A-Control) (W/ Filtration)	1
5	00-976722-00002	Overlay (A-Control) (W/O Filtration)	1
6	00-730534	Nut 10-24 Hex KEPS	4
7	00-946103-00003	Plate - A-Control Cover (VHG50)	1
7	00-946103-00004	Plate - A-Control Cover (VHG75)	1
8	00-946099-000G1	Bullnose Assy. (VHG50)	1
8	00-946099-000G5	Bullnose Assy. (VHG75)	1
9	00-944267	Screw 6-32 x 13/16 Phil. Pan Hd.	4
10	00-419317	Terminal - Stationary	1
11	SC-018-55	Mach. Screw 4-40 x 1/2 Phil. Pan Hd.	2
12	00-946096-000G1	Box - Control Panel (VHG50)	1
12	00-946096-000G2	Box - Control Panel (VHG75)	1
13	00-428906-00004	Overlay (USB Port)	1
14	00-959000-000G1	Cable Assy. (USB) (1 Ft.)	1
15	00-427755-000G1	Rocker Switch Assy.	1
16	00-428906-00001	Overlay - Power	1
17	00-730534	Nut 10-24 Hex KEPS	4
18	00-946102-000G1	Plate - C/D-Control Mount (VHG50)	1
18	00-946102-000G2	Plate - C/D-Control Mount (VHG75)	1
19	00-730228	Self-Tapping Screw 10-24 x 1/2 Phil. Truss Hd.	2
20	00-976706-00009	Kit - C-Control (W/ Filtration) (1-18) (Incls. Controller & Overlay)	AR
20	00-976706-00010	Kit - C-Control (W/O Filtration) (1-18) (Incls. Controller & Overlay)	AR
20	00-976706-00011	Kit - C-Control (W/ Filtration) (1-9) (Incls. Controller & Overlay)	AR
20	00-976706-00012	Kit - C-Control (W/O Filtration) (1-9) (Incls. Controller & Overlay)	AR
20	00-976706-00013	Kit - C-Control (W/ Filtration) (1-6) (Incls. Controller & Overlay)	AR
20	00-976706-00014	Kit - C-Control (W/O Filtration) (1-6) (Incls. Controller & Overlay)	AR
20	00-976706-00001	Overlay (W/ Filtration) (1-18).....	1
20	00-976706-00002	Overlay (W/O Filtration) (1-18).....	1
20	00-976706-00003	Overlay (W/ Filtration) (1-9).....	1
20	00-976706-00004	Overlay (W/O Filtration) (1-9).....	1
20	00-976706-00005	Overlay (W/ Filtration) (1-6).....	1
20	00-976706-00006	Overlay (W/O Filtration) (1-6).....	1
21	00-976705-00005	Kit - D-Control (W/ Filtration) (Incls. Controller & Overlay)	AR
21	00-976705-00006	Kit - D-Control (W/O Filtration) (Incls. Controller & Overlay)	AR
21	00-976705-00001	Overlay (W/ Filtration) (D Control).....	1
21	00-976705-00002	Overlay (W/O Filtration) (D Control).....	1



PL-61454

**CONTROLS
(MULTIPLE)
(BEFORE S/N 65026221)**

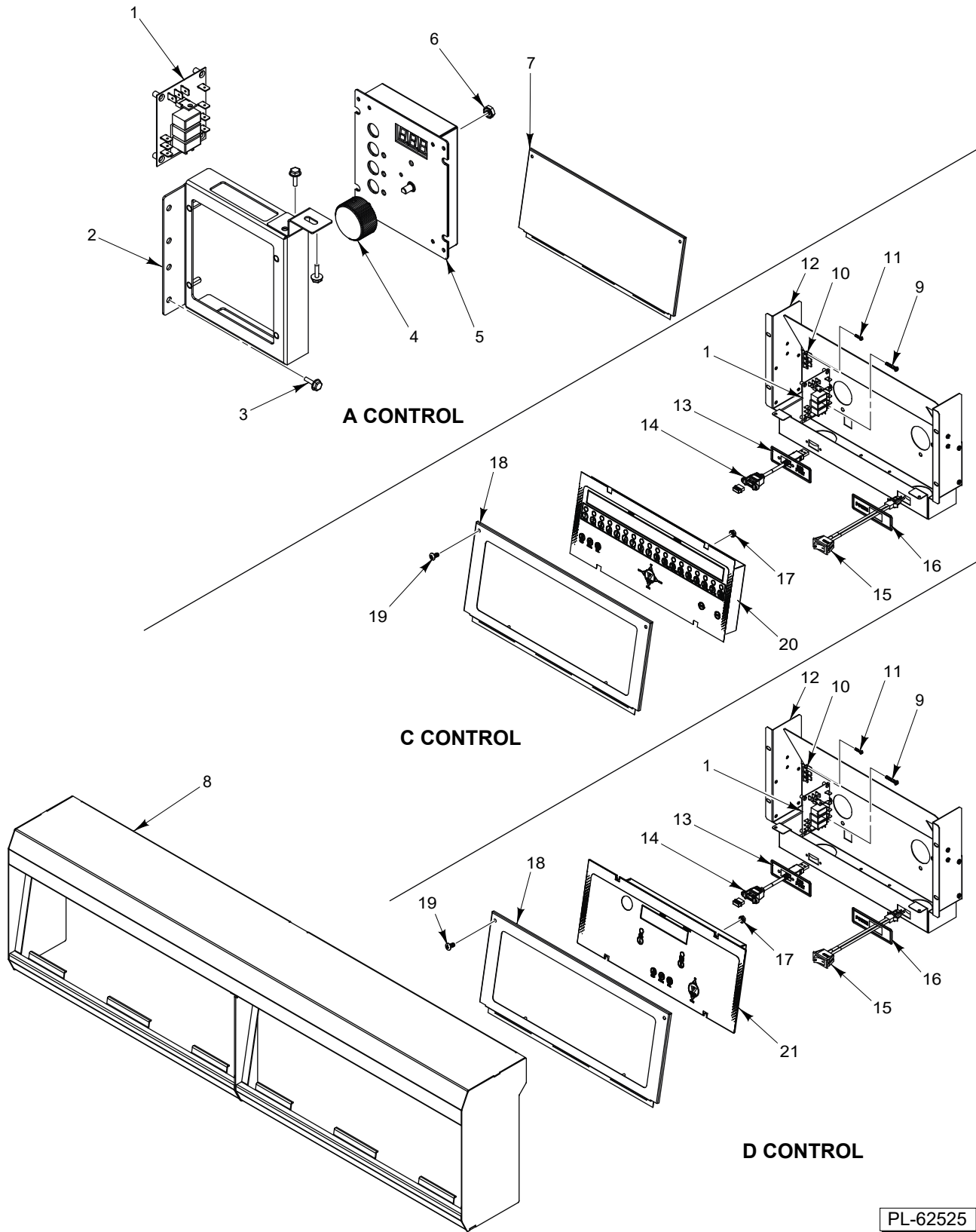
**CONTROLS
(MULTIPLE)
(BEFORE S/N 65026221)**

ILLUS.	PART NO.	NAME OF PART	AMT.
PL-32145			
1	00-730030	Mach. Screw 6-32 x 3/4 In.	2
2	NS-046-89	Nut Assy. 6-32 Hex KEPS	2
3	00-976750-00026	Magnet - Popper	3
4	00-976711-0AD45	Bullnose	1
5	00-976711-0AD45	Bullnose (Double) (VHG50).....	1
6	00-976716-0AD75	Bullnose (Double) (VHG75).....	1
7	00-976711-0AT45	Bullnose (Triple) (VHG50).....	1
8	00-976716-0AT75	Bullnose (Triple) (VHG75).....	1
9	00-976711-0AQ45	Bullnose (Quad) (VHG50).....	1
10	00-976716-0AQ75	Bullnose (Quad) (VHG75).....	1
11	00-976711-0004A	Door - Control Panel (VHG50).....	1
12	00-976716-0004A	Door - Control Panel (VHG75).....	1
13	00-976722-00004	Knob - Control	1
14	00-976711-0007A	Mount - Control Panel (VHG50) (A-Control).....	1
15	00-976716-0007A	Mount - Control Panel (VHG75) (A-Control).....	1
16	00-976722-00005	Kit - A-Control (W/ Filtration) (Incls. Controller, Overlay, & Knob)	1
17	00-976722-00006	Kit - A-Control (W/O Filtration) (Incls. Controller, Overlay, & Knob)	1
18	00-976722-00001	Overlay (A-Control) (W/ Filtration)	1
19	00-976722-00002	Overlay (A-Control) (W/O Filtration)	1
20	00-944267	Screw 6-32 x 13/16 Phil. Pan Hd.	8
21	00-427759-00003	Board - Interface	2
22	SC-018-55	Mach. Screw 4-40 x 1/2 Phil. Pan Hd.	4
23	00-419317	Terminal - Stationary	2
24	00-976711-00003	Box - Control Panel (VHG50).....	2
25	00-976716-00003	Box - Control Panel (VHG75).....	1
26	00-976750-00028	Magnet	2
27	RS-032-77	Rivet	6
28	00-959000-00003	Plate - Cover	1
29	00-730534	Nut 10-24 Hex KEPS	4
30	SD-032-07	Self-Tapping Screw 10-24 x 1/2 Hex. Hex Washer Hd., Type TT	8
31	00-428906-00001	Overlay - Power	2
32	00-427755-000G1	Rocker Switch Assy.	2
33		Rivet 1/8.....	4
34	00-976750-00027	Spacer - Magnet	4
35	NS-048-07	Lock Nut 10-24 Hex Special	2
36	00-723369	Mach. Screw 1/4-20 x 1/2 Phil. Truss Hd.	4
37	00-976750-00032	Bearing 1/4 In.	2
38	SC-132-86	Screw 10-24, 1/4 x 5/16	2
39	00-730228	Self-Tapping Screw 10-24 x 1/2 Phil. Truss Hd.	2
40	00-976711-004CD	Plate - Control Mount (VHG50) (C/D-Control).....	1
41	00-976716-004CD	Plate - Control Mount (VHG75) (C/D-Control).....	1
42	00-976705-00005	Kit - D-Control (W/ Filtration) (Incls. Controller & Overlay)	1
43	00-976705-00006	Kit - D-Control (W/O Filtration) (Incls. Controller & Overlay)	1
44	00-976705-00001	Overlay (W/ Filtration) (D Control).....	1
45	00-976705-00002	Overlay (W/O Filtration) (D Control).....	1
46	00-976706-00009	Kit - C-Control (W/ Filtration) (1-18) (Incls. Controller & Overlay)	1
47	00-976706-00010	Kit - C-Control (W/O Filtration) (1-18) (Incls. Controller & Overlay)	1
48	00-976706-00011	Kit - C-Control (W/ Filtration) (1-9) (Incls. Controller & Overlay)	1
49	00-976706-00012	Kit - C-Control (W/O Filtration) (1-9) (Incls. Controller & Overlay)	1
50	00-976706-00013	Kit - C-Control (W/ Filtration) (1-6) (Incls. Controller & Overlay)	1
51	00-976706-00014	Kit - C-Control (W/O Filtration) (1-6) (Incls. Controller & Overlay)	1
52	00-976706-00001	Overlay (W/ Filtration) (1-18) (C Control).....	1
53	00-976706-00002	Overlay (W/O Filtration) (1-18) (C Control).....	1
54	00-976706-00003	Overlay (W/ Filtration) (1-9) (C Control).....	1
55	00-976706-00004	Overlay (W/O Filtration) (1-9) (C Control).....	1
56	00-976706-00005	Overlay (W/ Filtration) (1-6) (C Control).....	1

**CONTROLS
(MULTIPLE)
(BEFORE S/N 65026221)**

ILLUS.	PART NO.	NAME OF PART	AMT.
PL-32145			
57	00-976706-00006	Overlay (W/O Filtration) (1-6) (C Control).....	1
58	00-730534	Nut 10-24 Hex KEPS	4
59	00-428906-00004	Overlay (USB Port)	1
60	00-959000-000G1	Cable Assy. (USB) (1 Ft.)	1

NOTES

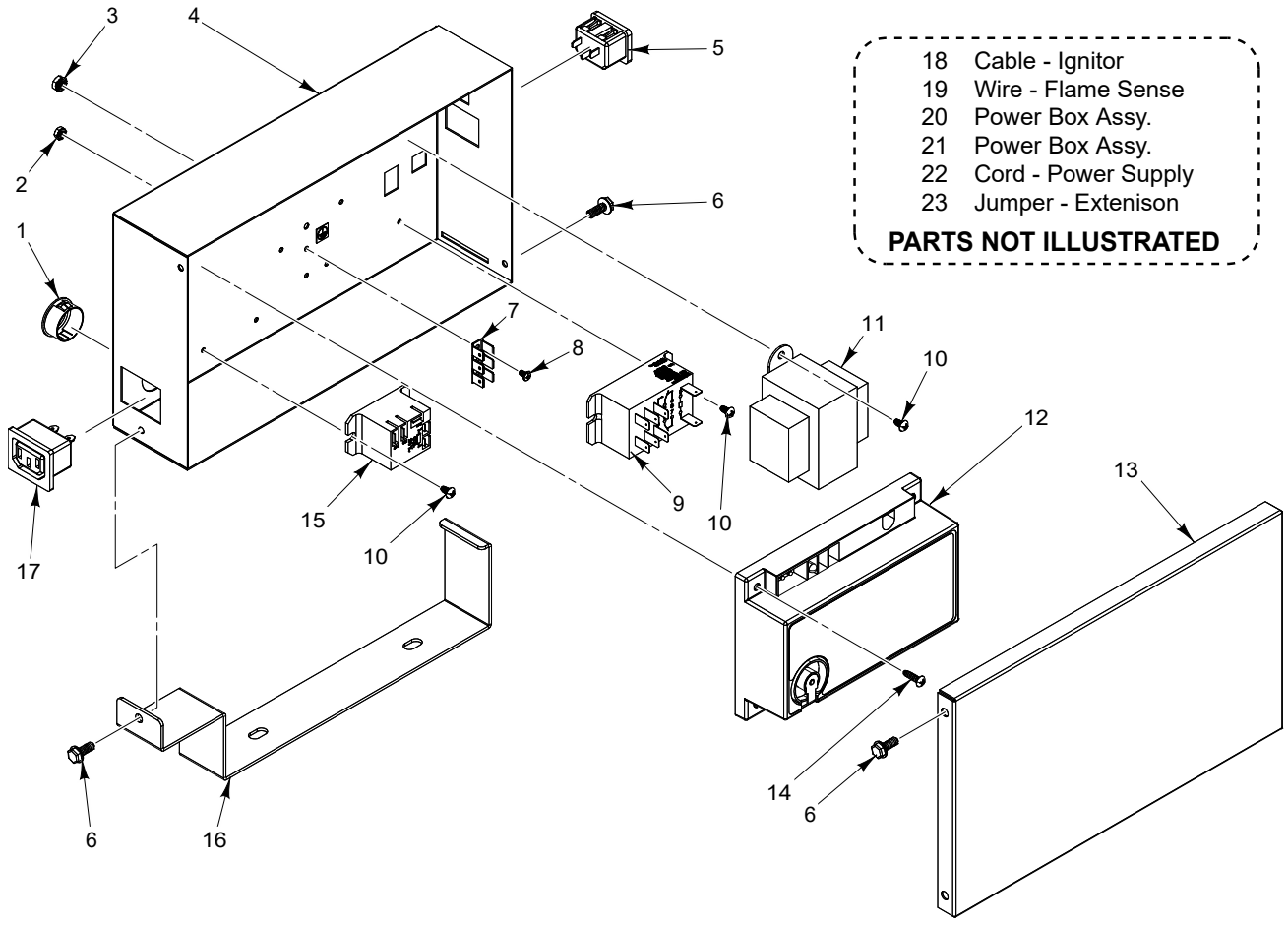


PL-62525

**CONTROLS
(MULTIPLE)
(STARTING S/N 65026221)**

**CONTROLS
(MULTIPLE)
(STARTING S/N 65026221)**

ILLUS.	PART NO.	NAME OF PART	AMT.
PL-62525			
1	00-427759-00003	Board - Interface	1
2	00-976722-00008	Bracket - A-Control Mount	1
3	SD-032-07	Self-Tapping Screw 10-24 x 1/2 Hex. Hex Washer Hd., Type TT	AR
4	00-976722-00004	Knob - Control	1
5	00-976722-00005	Kit - A-Control (W/ Filtration) (Incls. Controller, Overlay, & Knob)	AR
5	00-976722-00006	Kit - A-Control (W/O Filtration) (Incls. Controller, Overlay, & Knob)	AR
5	00-976722-00001	Overlay (A-Control) (W/ Filtration)	1
5	00-976722-00002	Overlay (A-Control) (W/O Filtration)	1
6	00-730534	Nut 10-24 Hex KEPS	4
7	00-946103-00003	Plate - A-Control Cover (VHG50)	AR
7	00-946103-00004	Plate - A-Control Cover (VHG75)	AR
8	00-946099-000G2	Bullnose Assy. (Double) (VHG50)	1
8	00-946099-000G6	Bullnose Assy. (Double) (VHG75)	1
8	00-946099-000G3	Bullnose Assy. (Triple) (VHG50)	1
8	00-946099-000G7	Bullnose Assy. (Triple) (VHG75)	1
8	00-946099-000G4	Bullnose Assy. (Quad) (VHG50)	1
8	00-946099-000G8	Bullnose Assy. (Quad) (VHG75)	1
9	00-944267	Screw 6-32 x 13/16 Phil. Pan Hd.	4
10	00-419317	Terminal - Stationary	1
11	SC-018-55	Mach. Screw 4-40 x 1/2 Phil. Pan Hd.	2
12	00-946096-000G1	Box - Control Panel (VHG50)	AR
12	00-946096-000G2	Box - Control Panel (VHG75)	AR
13	00-428906-00004	Overlay (USB Port)	1
14	00-959000-000G1	Cable Assy. (USB) (1 Ft.)	1
15	00-427755-000G1	Rocker Switch Assy.	1
16	00-428906-00001	Overlay - Power	1
17	00-730534	Nut 10-24 Hex KEPS	4
18	00-946102-000G1	Plate - C/D-Control Mount (VHG50)	1
18	00-946102-000G2	Plate - C/D-Control Mount (VHG75)	1
19	00-730228	Self-Tapping Screw 10-24 x 1/2 Phil. Truss Hd.	2
20	00-976706-00009	Kit - C-Control (W/ Filtration) (1-18) (Incls. Controller & Overlay)	AR
20	00-976706-00010	Kit - C-Control (W/O Filtration) (1-18) (Incls. Controller & Overlay)	AR
20	00-976706-00011	Kit - C-Control (W/ Filtration) (1-9) (Incls. Controller & Overlay)	AR
20	00-976706-00012	Kit - C-Control (W/O Filtration) (1-9) (Incls. Controller & Overlay)	AR
20	00-976706-00013	Kit - C-Control (W/ Filtration) (1-6) (Incls. Controller & Overlay)	AR
20	00-976706-00014	Kit - C-Control (W/O Filtration) (1-6) (Incls. Controller & Overlay)	AR
20	00-976706-00001	Overlay (W/ Filtration) (1-18).....	1
20	00-976706-00002	Overlay (W/O Filtration) (1-18).....	1
20	00-976706-00003	Overlay (W/ Filtration) (1-9).....	1
20	00-976706-00004	Overlay (W/O Filtration) (1-9).....	1
20	00-976706-00005	Overlay (W/ Filtration) (1-6).....	1
20	00-976706-00006	Overlay (W/O Filtration) (1-6).....	1
21	00-976705-00005	Kit - D-Control (W/ Filtration) (Incls. Controller & Overlay)	AR
21	00-976705-00006	Kit - D-Control (W/O Filtration) (Incls. Controller & Overlay)	AR
21	00-976705-00001	Overlay (W/ Filtration) (D Control).....	1
21	00-976705-00002	Overlay (W/O Filtration) (D Control).....	1



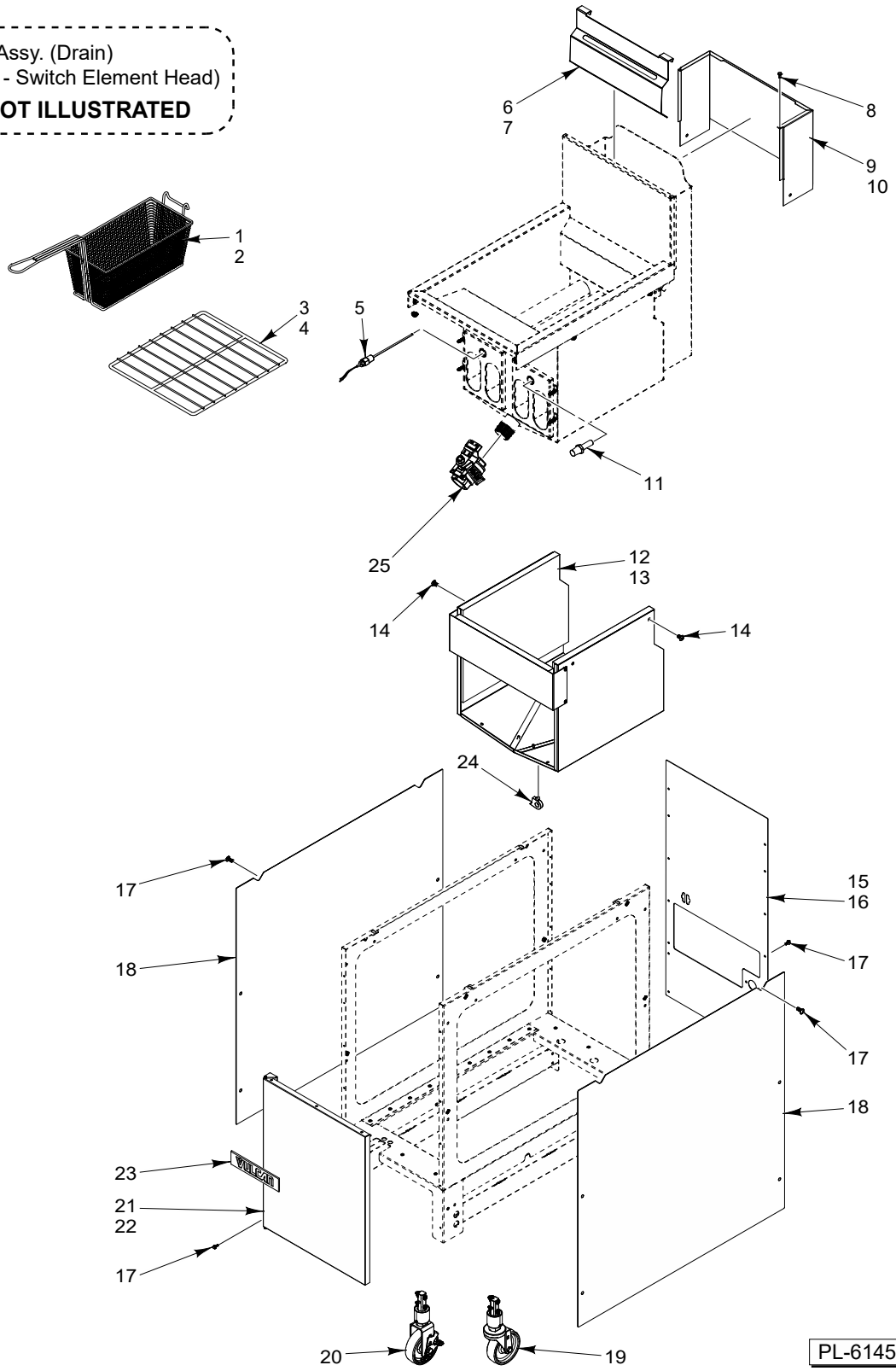
POWER BOX

PL-61455

POWER BOX

ILLUS.	PART NO.	NAME OF PART	AMT.
PL-61455			
1	FE-023-56	Bushing - Electric Snap	1
2	00-90675A-00005	Nut	2
3	00-90675A-00007	Nut	1
4	00-428683-00006	Box - Power Supply	1
5	00-419971	Receptacle - Power (Male).....	1
6	SD-036-80	Self-Tapping Screw 8-32 x 3/8 Hex Washer Hd., Type TT	4
7	00-419317	Terminal - Stationary	1
8	00-90272A-00105	Screw	2
9	00-428864-00001	Relay - Pump	1
10	00-90087A-00144	Screw	6
11	00-411500-00012	Transformer (120 VAC, 24 V., 40 VA) (W/ Plug Assy.).....	1
12	00-857207-00004	Module - Ignitor	1
13	00-428684-00003	Lid - Power Supply	1
14	00-90087A-00148	Screw	4
15	00-497125-00001	Relay - Fill Valve (SPDT, 24 VAC)	1
16	00-428688-00002	Bracket - Power Supply	1
17	00-419970	Receptacle - Power (Female).....	1
18	00-976743-00001	Cable - Ignitor	1
19	00-976743-00002	Wire - Flame Sense	1
20	00-428685-00010	Power Box Assy. (W/ Filtration) (Incls. Items 1 thru 17).....	1
21	00-428685-00011	Power Box Assy. (W/O Filtration) (Incls. Items 1 thru 8, 10 thru 14, 16, & 17).....	1
22	00-419967-00005	Cord - Power Supply (84 In.)	1
23	00-419967-00003	Jumper - Extension (24-1/2 In.)	1

26 Switch Assy. (Drain)
 27 Magnet - Switch Element Head)
PARTS NOT ILLUSTRATED

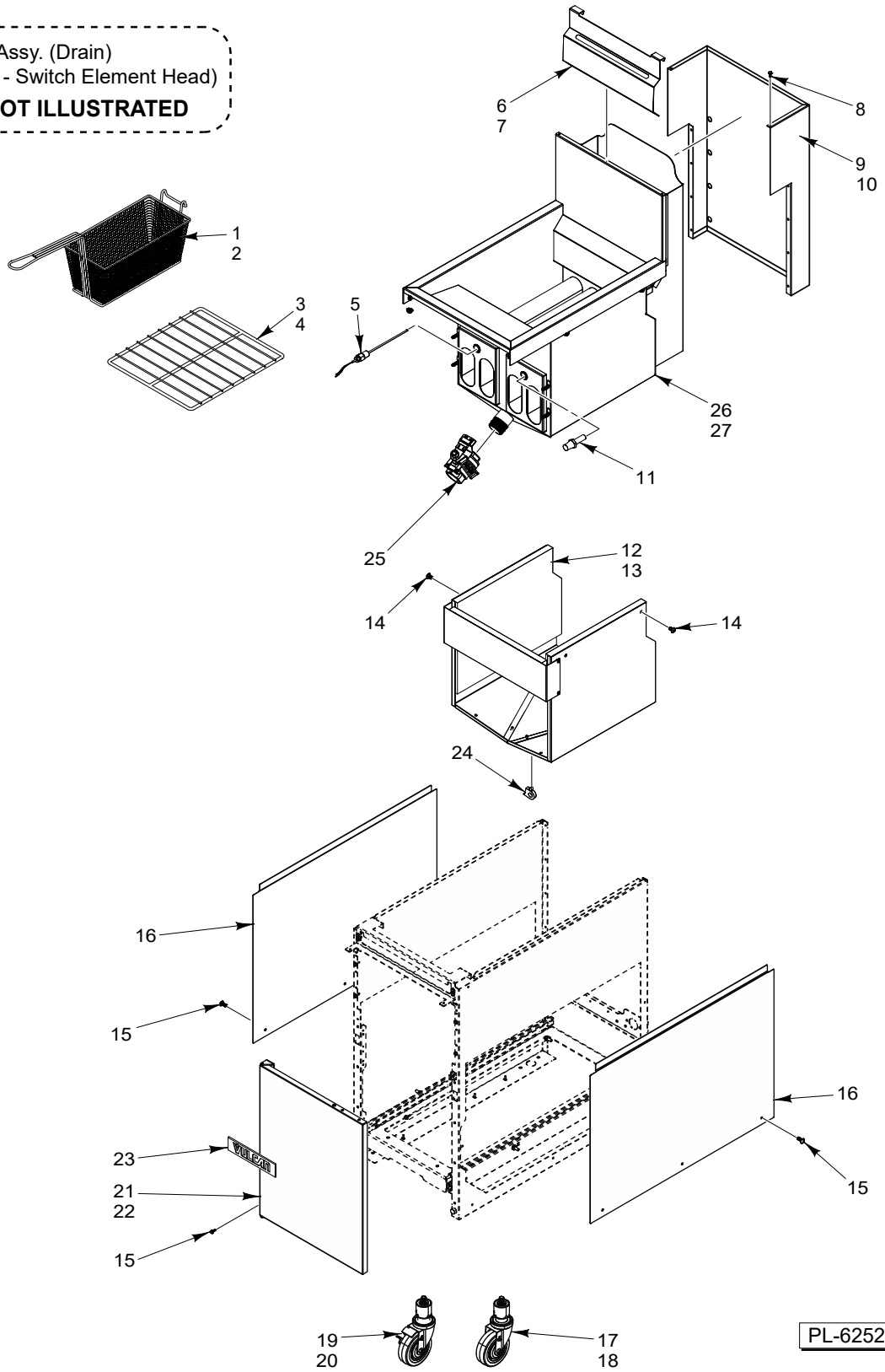


**PANELS
 (BEFORE S/N 65026221)**

**PANELS
(BEFORE S/N 65026221)**

ILLUS.	PART NO.	NAME OF PART	AMT.
PL-61456			
1	00-499223-00001	Basket - Twin (VHG50).....	2
2	00-499223-00002	Basket - Twin (VHG75).....	2
3	00-976731-00050	Rack - Basket (VHG50).....	1
4	00-976731-00075	Rack - Basket (VHG75).....	1
5	00-976730-00001	Probe - Temp.	1
6	00-417056-00002	Hanger - Basket (VHG50).....	1
7	00-418321-00002	Hanger - Basket (VHG75).....	1
8	SD-036-80	Self-Tapping Screw 8-32 x 3/8 Hex Washer Hd., Type TT	2
9	00-976709-00018	Panel - Back (VHG50).....	1
10	00-976713-00018	Panel - Back (VHG75).....	1
11	00-976588	Control - High Limit	1
12	00-976709-19KIT	Kit - Insulation, Tank (Incls. Insulation & Retainer) (VHG50).....	1
13	00-976713-19KIT	Kit - Insulation, Tank (Incls. Insulation & Retainer) (VHG75).....	1
14	00-723369	Mach. Screw 1/4-20 x 1/2 Phil. Truss Hd.	4
15	00-976709-00016	Panel - Back (VHG50).....	1
16	00-976713-00016	Panel - Back (VHG75).....	1
17	SD-032-07	Self-Tapping Screw 10-24 x 1/2 Hex. Hex Washer Hd., Type TT	AR
18	00-976700-00002	Panel - Side	2
19	00-976714-00002	Caster (Swivel)	2
20	00-976714-00001	Caster (Fixed)	2
21	00-976717-00050	Door (VHG50).....	1
22	00-976717-00075	Door (VHG75).....	1
23	00-957916-00005	Nameplate - Vulcan	1
24	00-976721-00009	Clip - Wire Harness.....	4
25	00-976656-00002	Valve - Drain Assy. (Incls. Items 29 & 30).....	1
26	00-426805-000G1	Switch Assy. (Drain).....	1
27	00-426801-00002	Magnet - Switch Element Head	1

28 Switch Assy. (Drain)
 29 Magnet - Switch Element Head
PARTS NOT ILLUSTRATED

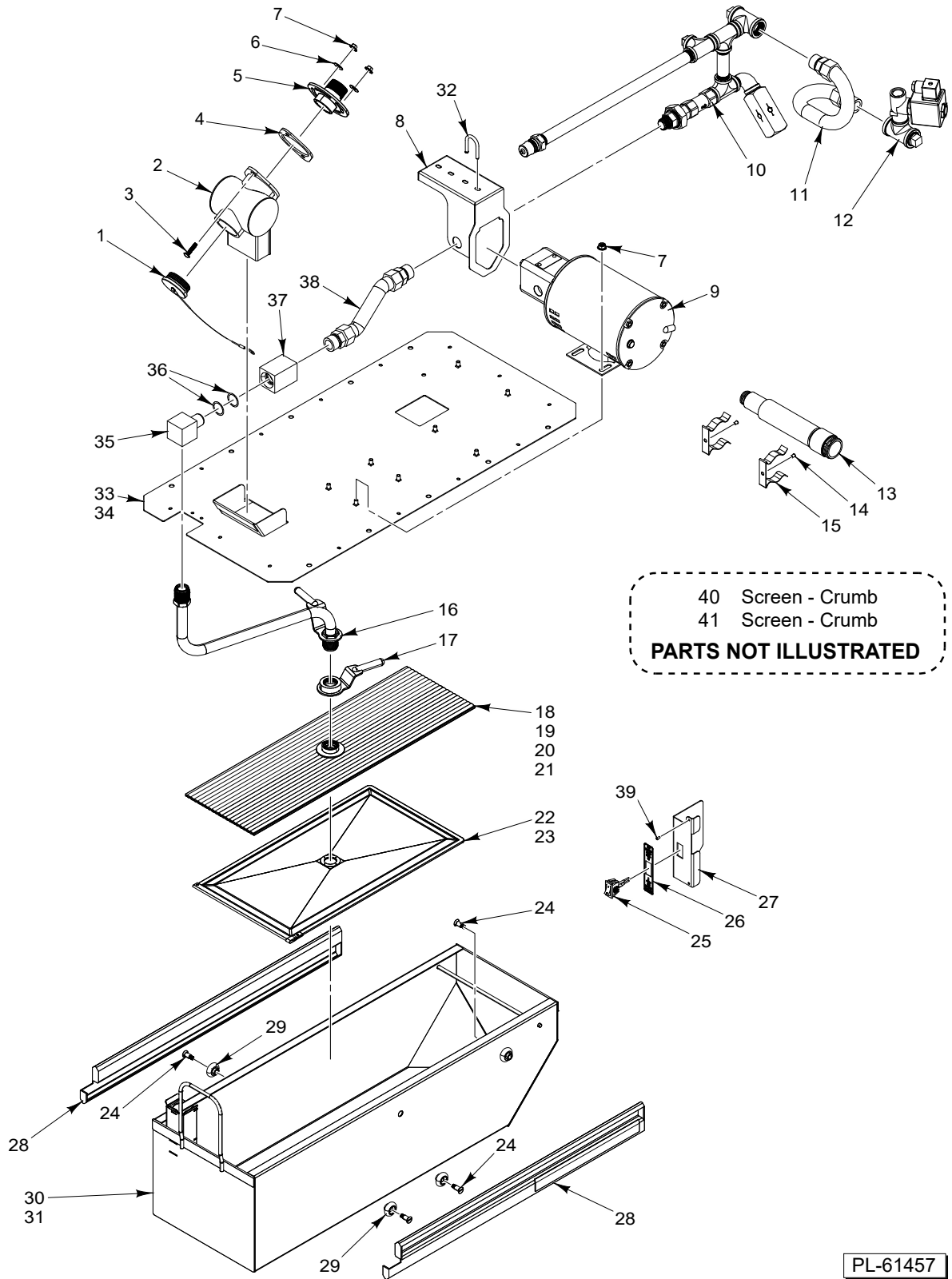


**PANELS
 (STARTING S/N 65026221)**

PL-62526

PANELS
(STARTING S/N 65026221)

ILLUS.	PART NO.	NAME OF PART	AMT.
PL-62526			
1	00-499223-00001	Basket - Twin	2
2	00-499223-00002	Basket - Twin	2
3	00-976731-00050	Rack - Basket (VHG50)	1
4	00-976731-00075	Rack - Basket (VHG75)	1
5	00-976730-00001	Probe - Temp.	1
6	00-417056-00002	Hanger - Basket (VHG50)	1
7	00-418321-00002	Hanger - Basket (VHG75)	1
8	SD-036-80	Self-Tapping Screw B-32 x 3/8 Hex Washer Hd., Type TT	2
9	00-946098-00001	Panel - Back Flue Cover (VHG50)	1
10	00-946098-00002	Panel - Back Flue Cover (VHG75)	1
11	00-976588	Control - High Limit	1
12	00-976709-19KIT	Kit - Insulation, Tank (VHG50) (Incl. Insulation & Retainer).....	1
13	00-976713-19KIT	Kit - Insulation, Tank (VHG75) (Incl. Insulation & Retainer).....	1
14	00-723369	Mach. Screw 1/4-20 x 1/2 Phil. Truss Hd.	4
15	SD-032-07	Self-Tapping Screw 10-24 x 1/2 Hex. Hex Washer Hd., Type TT	AR
16	00-976977	Panel - Side	2
17	00-959832-00003	Caster - Screw-In Mount	AR
18	00-421893-00002	Caster - Plate Mount	AR
19	00-959832-00001	Caster - Screw-In Mount	AR
20	00-421893-00001	Caster - Plate Mount	AR
21	00-946086-000G1	Reversible Door Assy. (VHG50)	1
22	00-946086-000G2	Reversible Door Assy. (VHG75)	1
23	00-957916-00005	Nameplate - Vulcan	1
24	00-976721-00009	Clip - Wire Harness	4
25	00-976656-00002	Valve - Drain Assy.	1
26	00-976709-0000A	Tank Assy. (VHG50)	AR
27	00-976713-0000A	Tank Assy. (VHG75)	AR
28	00-426805-00091	Switch Assy. (Drain)	1
29	00-426801-00002	Magnet - Switch Element Head	1



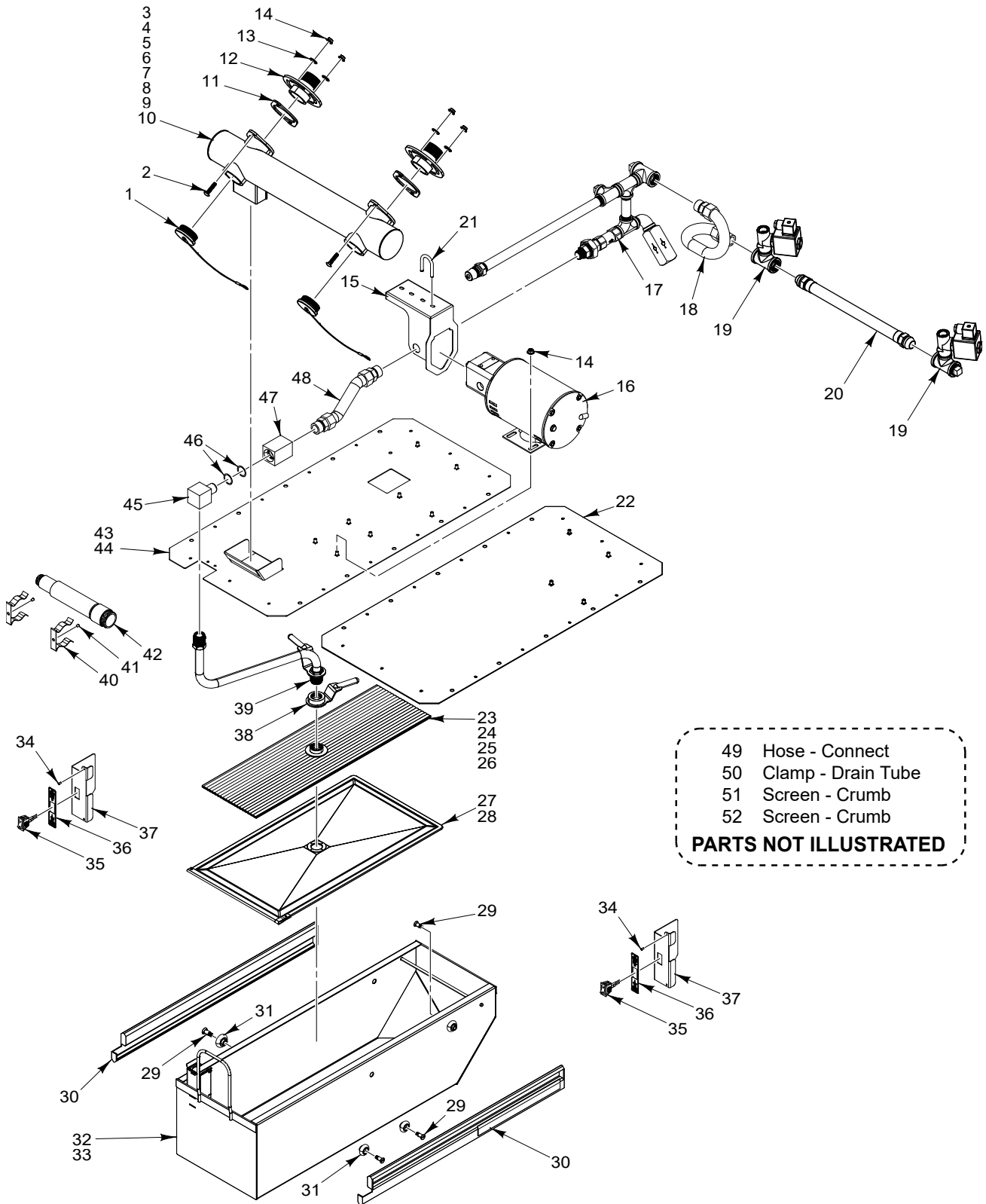
40 Screen - Crumb
 41 Screen - Crumb
PARTS NOT ILLUSTRATED

**FILTRATION
 (SINGLE)
 (BEFORE S/N 65026221)**

PL-61457

**FILTRATION
(SINGLE)
(BEFORE S/N 65026221)**

ILLUS.	PART NO.	NAME OF PART	AMT.
PL-61457			
1	00-497571-000G2	Plug - Drain	1
2	00-976518-00023	Pipe - Drain	1
3	SC-132-93	Carriage Bolt 1/4-20 x 1-1/4 In.	2
4	00-420553-00003	Gasket - Silicone	1
5	00-976693-00001	Drain Flange	1
6	WS-031-25	Washer	3
7	NS-038-08	Lock Nut 1/4-20 Flange	AR
8	00-976707-00042	Mount - Piping	1
9	00-417792-00008	Pump Motor Assy. (115/230 V., 60 Hz.) (8 G.P.M.)	1
10	00-976707-00046	Filtration Piping	1
11	00-426602-00005	Tube - Flex 23 In.	1
12	00-976707-00049	Valve Assy.	1
13	00-497572-000G3	Pipe - Boil Out Bypass	1
14	RS-033-04	Rivet - Pop	2
15	00-417039-00002	Clip - Drain Pipe	2
16	00-956901-00001	Tube - Suction	1
17	00-976707-00041	Nut - Handle	1
18	00-499085-00009	Insert - Screen (SST) (VHG50).....	1
19	00-499085-00008	Insert - Envelope (Fabric) (VHG50).....	1
20	00-499085-00010	Insert - Screen (SST) (VHG75).....	1
21	00-499085-00011	Insert - Envelope (Fabric) (VHG75).....	1
22	00-499087-00008	Filter - Screen (SST) (VHG50).....	1
23	00-499087-00009	Filter - Screen (SST) (VHG75).....	1
24	00-976708-00003	Stud	8
25	00-427755-000G1	Rocker Switch Assy.	1
26	00-428906-00003	Overlay (Rinse/Fill/Discharge)	1
27	00-976707-00051	Mount - Switch	1
28	00-976708-00001	Slide (Set of 2)	1
29	00-976708-00002	Bearing	8
30	00-976707-00001	Pan - Filter (VHG50).....	1
31	00-976707-00009	Pan - Filter (VHG75).....	1
32	00-521820	U-Bolt	1
33	00-976715-0000A	Mount - Filtration (VHG50).....	1
34	00-976720-0000A	Mount - Filtration (VHG75).....	1
35	00-426567-00007	Block - Suction , Male.....	1
36	00-426567-00008	O-Ring	2
37	00-426567-00006	Block - Suction	1
38	00-426602-00007	Tube - Flex 8 In.	1
39	00-719874	Rivet - Pop	AR
40	00-976707-00052	Screen - Crumb (VHG50).....	1
41	00-976707-00060	Screen - Crumb (VHG75).....	1

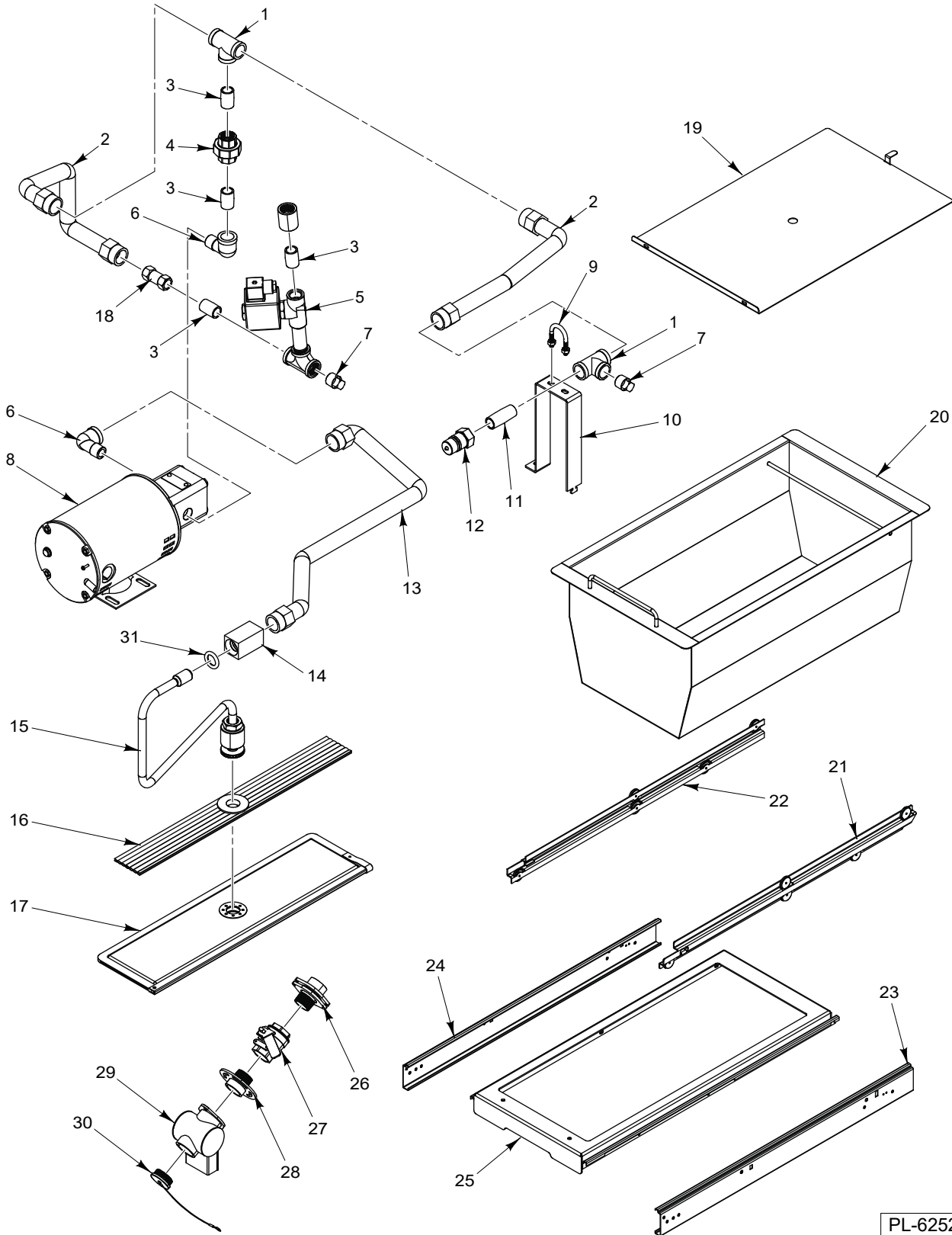


**FILTRATION
 (MULTIPLE)
 (BEFORE S/N 65026221)**

PL-61458

**FILTRATION
(MULTIPLE)
(BEFORE S/N 65026221)**

ILLUS.	PART NO.	NAME OF PART	AMT.
PL-61458			
1	00-497571-000G2	Plug - Drain	1
2	SC-132-93	Carriage Bolt 1/4-20 x 1-1/4 In.	4
3	00-976518-00A5V	Pipe - Drain (2 Batteries) (VHG50).....	1
4	00-976719-00A5V	Pipe - Drain (2 Batteries) (VHG75).....	1
5	00-976518-00015	Pipe - Drain (3 Batteries) (Center) (VHG50).....	1
6	00-976518-00013	Pipe - Drain (3 Batteries) (End) (VHG50).....	1
7	00-976719-00015	Pipe - Drain (3 Batteries) (Center) (VHG75).....	1
8	00-976719-00013	Pipe - Drain (3 Batteries) (End) (VHG75).....	1
9	00-976518-00014	Pipe - Drain (4 Batteries) (Center) (VHG50).....	1
10	00-976719-00014	Pipe - Drain (4 Batteries) (Center) (VHG75).....	1
11	00-420553-00003	Gasket - Silicone	2
12	00-976693-00001	Drain Flange	2
13	WS-031-25	Washer	4
14	NS-038-08	Lock Nut 1/4-20 Flange	AR
15	00-976707-00042	Mount - Piping	1
16	00-417792-00008	Pump Motor Assy. (115/230 V., 60 Hz.) (8 G.P.M.)	1
17	00-976707-00046	Filtration Piping	1
18	00-426602-00005	Tube - Flex 23 In.	1
19	00-976707-00049	Valve Assy.	2
20	00-426602-00006	Tube - Flex 18 In.	1
21	00-521820	U-Bolt	1
22	00-976732-0000A	Floor Pan	1
23	00-499085-00009	Insert - Screen (SST) (VHG50).....	1
24	00-499085-00008	Insert - Envelope (Fabric) (VHG50).....	1
25	00-499085-00010	Insert - Screen (SST) (VHG75).....	1
26	00-499085-00011	Insert - Envelope (Fabric) (VHG75).....	1
27	00-499087-00008	Filter - Screen (SST) (VHG50).....	1
28	00-499087-00009	Filter - Screen (SST) (VHG75).....	1
29	00-976708-00003	Stud	8
30	00-976708-00001	Slide (Set of 2)	1
31	00-976708-00002	Bearing	8
32	00-976707-00001	Pan - Filter (VHG50).....	1
33	00-976707-00009	Pan - Filter (VHG75).....	1
34	00-719874	Rivet - Pop	4
35	00-427755-000G1	Rocker Switch Assy.	2
36	00-428906-00003	Overlay (Rinse/Fill/Discharge)	2
37	00-976707-00051	Mount - Switch	2
38	00-976707-00041	Nut - Handle	1
39	00-956901-00001	Tube - Suction	1
40	00-417039-00002	Clip - Drain Pipe	2
41	RS-033-04	Rivet - Pop	2
42	00-497572-000G3	Pipe - Boil Out Bypass	1
43	00-976715-0000A	Mount - Filtration (VHG50).....	1
44	00-976720-0000A	Mount - Filtration (VHG75).....	1
45	00-426567-00007	Block - Suction , Male.....	1
46	00-426567-00008	O-Ring	2
47	00-426567-00006	Block - Suction	1
48	00-426602-00007	Tube - Flex 8 In.	1
49	00-419351-00002	Hose - Connect	AR
50	00-497409-00002	Clamp - Drain Tube (3 In.)	AR
51	00-976707-00052	Screen - Crumb (VHG50).....	AR
52	00-976707-00060	Screen - Crumb (VHG75).....	AR

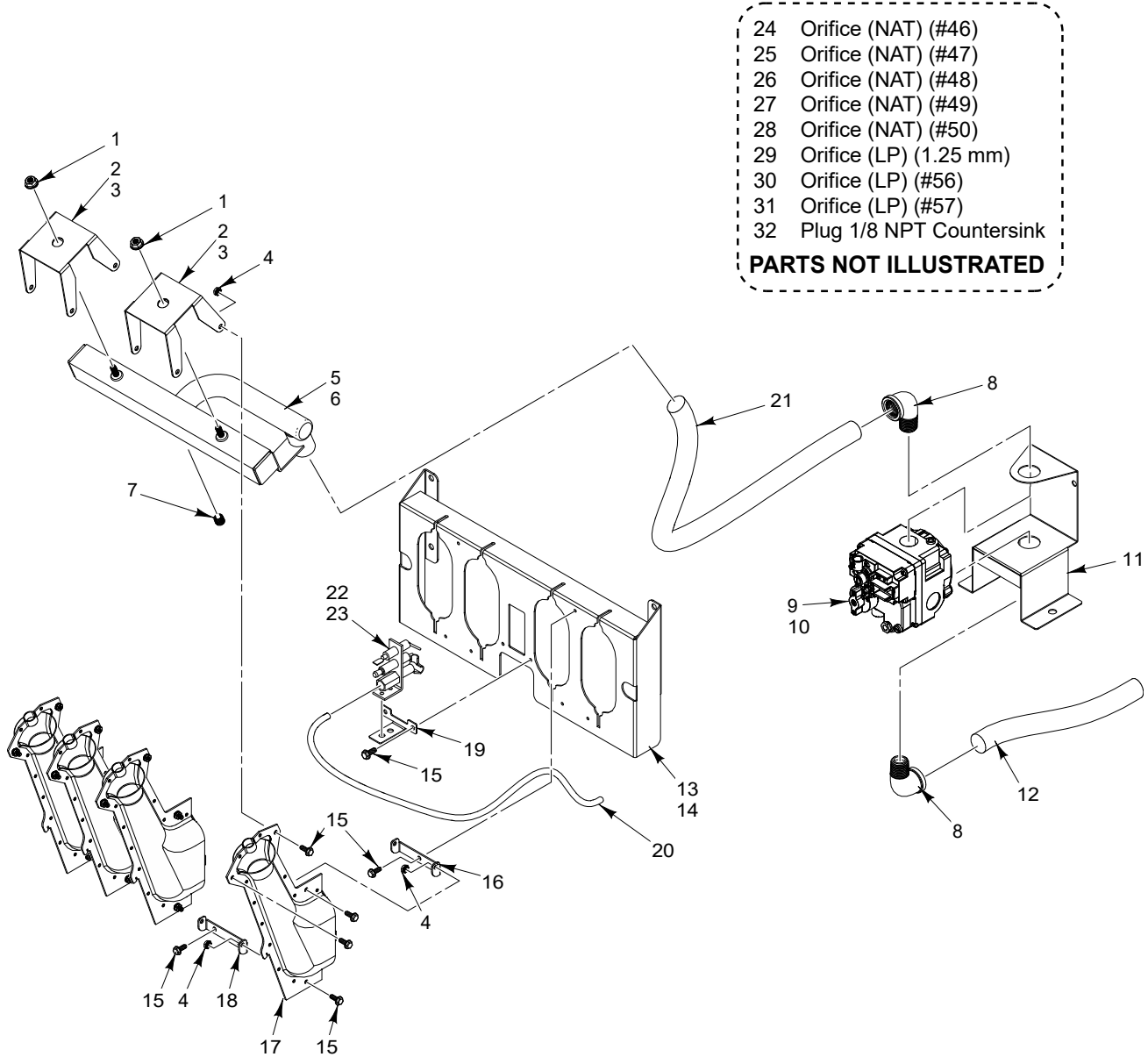


PL-62527

**FILTRATION
(STARTING S/N 65026221)**

FILTRATION (STARTING S/N 65026221)

ILLUS.	PART NO.	NAME OF PART	AMT.
PL-62527			
1	FP 019-25	Tee, 1/2 x 1/2 x 1/2 NPT	2
2	00-426602-00001	Tube - Flex (12 In.)	AR
3	FP-035-91	Pipe 1/2 x 1-1/8 TBE	3
4	00-946121	304 Stainless Steel 1/2" UNION	1
5	00-946120-00001	Tank Valve Assy.	1
6	FP-013-17	Elbow - Street 1/2 x 90 Deg.	2
7	FP-028-14	PLUG,PIPE 1/2.....	2
8	00-417792-00009	Pump/Motor Assembly	1
9	00-521820	U-Bolt	1
10	00-956905-00005	Standoff, Oil Return VHG50	1
10	00-956905-00006	Standoff, Oil Return VHG70	1
11	FP-035-95	Pipe 1/2 x 2 TBE	1
12	00-418781-00001	DISCONNECT,MALE.....	1
13	00-426602-00004	Tube - Flex (19 In.) (VHG50).....	1
13	00-426602-00008	25 In. Flex Tube (VHG70).....	1
14	00-946035-00005	Receptacle - Oil Suction (Single O-Ring Design)	1
15	00-976998-000G9	Suction Tube Assy. (VHG50)	1
15	00-976998-000G13	Suction Tube Assy. (VHG70)	1
16	00-499085-00003	Insert - Filter Screen (2-1/4 x 19 In.) (VHG50).....	1
16	00-499085-00007	Insert - Filter Screen (7-3/4 x 19 In.) (VHG70).....	1
17	00-499087-00004	Screen - Fine Mesh Filter (Metal) (22 x 10-1/2 In.) (VHG50).....	1
17	00-499087-00002	Screen - Fine Mesh Filter (Metal) (22 x 5 In.) (VHG70).....	1
18	00-418786-00001	VALVE,CHECK BALL.....	1
19	00-956904-00001	Splash Guard (11 x 22 In.) (VHG50).....	1
19	00-956904-00002	Splash Guard (16-1/2 x 22 In.) (VHG70).....	1
20	00-946089-00G15	Pan Filter Assy. (VHG50).....	1
20	00-946089-00G17	Pan Filter Assy. (VHG70).....	1
21	00-958026-00012	Drawer Rail (LH)	1
22	00-958026-00009	Drawer Rail (RH)	1
23	00-958026-00010	Guide (LH)	1
24	00-958026-00007	Guide (RH)	1
25	00-956907-00003	Counter - Top (VHG50).....	1
25	00-946091-00006	Counter - Top (VHG70).....	1
26	00-976985-00001	Flange - Ball Valve	AR
27	00-976656-00002	Valve - Drain Assy.	AR
28	00-976693-00004	Drain Nipple Assy.	AR
29	00-976518-00023	Pipe - Drain	AR
29	00-976938-0001A	Common Drain Manifold Assy.	AR
29	00-976938-0245A	Pipe - Drain 45 (2 Batt)	AR
29	00-976938-0265A	Pipe - Drain 65 (2 Batt)	AR
29	00-976938-0445A	Pipe - Drain 45 (4 Batt)	AR
29	00-976938-0465A	Pipe - Drain 65 (4 Batt)	AR
30	00-497571-000G2	Plug - Drain	AR
31	00-946036	O-Ring (For Single O-Ring Receptacle)	1



PL-61459

COMBUSTION

COMBUSTION

ILLUS. PL-61459	PART NO.	NAME OF PART	AMT.
1	NS-038-08	Lock Nut 1/4-20 Flange	6
2	00-976729-00001	Bracket - Burner Manifold (VHG50).....	2
3	00-976729-00002	Bracket - Burner Manifold (VHG75).....	2
4	NS-044-07	Nut Assy. 8-32 Hex KEPS	AR
5	00-976728-00001	Burner Manifold (VHG50).....	1
6	00-976728-00002	Burner Manifold (VHG75).....	AR
7	00-719363	Plug 1/8 NPT Countersink	2
8	FP-013-17	Elbow - Street 1/2 x 90 Deg.	2
9	00-410841-00028	Valve - Combination (NAT) (Electronic Ignition) (Before S/N 65026221).....	1
9	00-976744-00001	Valve - Combination (NAT) (Electronic Ignition) (Starting S/N 65026221).....	1
10	00-410841-00029	Valve - Combination (LP) (Electronic Ignition) (Before S/N 65026221).....	1
10	00-976744-00002	Valve - Combination (LP) (Electronic Ignition) (Starting S/N 65026221).....	1
11	00-976750-00023	Bracket - Gas Valve (Before S/N 65026221).....	1
11	00-946117	Bracket - Gas Valve (Starting S/N 65026221).....	1
12	00-427882-000G1	Gas Inlet.....	1
13	00-976750-00012	Bracket - Burner Mount (VHG50).....	1
14	00-976753-00012	Bracket - Burner Mount (VHG75).....	1
15	SD-036-80	Self-Tapping Screw 8-32 x 3/8 Hex Washer Hd., Type TT	AR
16	00-976750-00022	Bracket - Burner (1 Hole) (Before S/N 65026221).....	2
17	00-976723	Burner	4
18	00-976750-00016	Bracket - Burner (2 Hole) (4 on VHG50, 8 on VHG70).....	2
19	00-976735-00003	Bracket - Ignitor Mount	1
20	00-426505-00023	Tube - Flex 1/4 O.D. x 23 In. Lg.	1
21	00-427882-000G3	Tube - Flex (Gas Inlet)	1
22	00-976736	Ignitor - Sense Pilot (NAT)	1
23	00-976737	Ignitor - Sense Pilot (LP)	1
24	00-976754-00046	Orifice (NAT) (#46) (0-1999 Ft.).....	AR
25	00-976754-00047	Orifice (NAT) (#47) (2000-3999 Ft.).....	AR
26	00-976754-00048	Orifice (NAT) (#48) (4000-6999 Ft.).....	AR
27	00-976754-00049	Orifice (NAT) (#49) (7000-8999 Ft.).....	AR
28	00-976754-00050	Orifice (NAT) (#50) (9000+ Ft.).....	AR
29	00-976754-125MM	Orifice (LP) (1.25 mm) (0-4999 Ft.).....	AR
30	00-976754-00056	Orifice (LP) (#56) (5000-9999 Ft.).....	AR
31	00-976754-00057	Orifice (LP) (#57) (10000+ Ft.).....	AR
32	00-719363	Plug 1/8 NPT Countersink	1

- 1 Harness - Basket Lift
- 2 Harness - Filter Switch
- 3 Harness - Motor Pump
- 4 Harness - Gas Valve
- 5 Harness - Trans (40 VA, 120/24V.)
- 6 Harness - Main
- 7 Harness - Interface
- 8 Harness - Interface to DVI
- 9 Harness - D-Control Connector
- 10 Harness - C-Control Connector
- 11 Harness - Heat Trace (Before S/N 65026221)
- 12 Harness - Heat Trace (Starting S/N 65026221)
- 13 Harness - T Motor Pump
- 14 Heat Trace Easy Connect (120 V.)

PARTS NOT ILLUSTRATED

PL-61512

WIRE HARNESSSES

WIRE HARNESSSES

ILLUS. PL-61512	PART NO.	NAME OF PART	AMT.
1	00-976721-00013	Harness - Basket Lift	AR
2	00-976721-00002	Harness - Filter Switch	AR
3	00-976721-00006	Harness - Motor Pump	AR
4	00-976721-00005	Harness - Gas Valve	AR
5	00-976721-00009	Transformer (120VAC, 24 V, 40 VA) (480V)	AR
6	00-976721-00001	Harness - Main	AR
7	00-427753-00010	Harness - Interface	AR
8	00-427750-000G1	Harness (Interface to DVI)	AR
9	00-976705-00004	Harness - D-Control Connector	AR
10	00-976706-00008	Harness - C-Control Connector	AR
11	00-976721-00016	Harness - Heat Trace (Before S/N 65026221).....	AR
12	00-976721-00018	Harness - Heat Trace (Starting S/N 65026221).....	AR
13	00-976721-00007	Harness - T Motor Pump (Starting S/N 65026221).....	AR
14	00-976721-00020	Heat Trace Easy Connect (120 V.) (Starting S/N 65026221).....	AR

Item Number	Part Number	Part Description
1	00-946120-00001	Tank Valve Assy.
2	00-857207-00004	Module - Ignitor
3	00-976736	Ignitor - Sense Pilot (NAT)
4	00-976744-00001	Valve - Combination (NAT) (Electronic Ignition)
5	00-976744-00002	Valve - Combination (LP) (Electronic Ignition)
6	00-497125-00004	Relay SPDT (24 V.)
7	00-428864-00001	Relay - Pump
8	00-427755-000G1	Rocker Switch Assy.
9	00-426805-000G1	Switch Assy.
10	00-418786-00001	Valve - Check
11	00-946036	O-Ring (For Single O-Ring Receptacle)
12	00-976730-00001	Probe - Temp.
13	00-976588	Control - High Limit
14	00-427759-00003	Board - Interface
15	00-419967-00005	Cord - Power Supply (84 In.)
16	00-419967-00003	Jumper - Extension (24-1/2 In.)
17	00-427755-000G1	Rocker Switch Assy.

PL-62528

RECOMMENDED SPARE PARTS LIST

RECOMMENDED SPARE PARTS LIST

ILLUS.	PART NO.	NAME OF PART	AMT.
PL-62528			
1	00-946120-00001	Tank Valve Assy.	1
2	00-857207-00004	Module - Ignitor	1
3	00-976736	Ignitor - Sense Pilot (NAT)	1
4	00-976744-00001	Valve - Combination (NAT) (Electronic Ignition)	1
5	00-976744-00002	Valve - Combination (LP) (Electronic Ignition)	1
6	00-497125-00004	Relay SPDT (24 V.)	1
7	00-428864-00001	Relay - Pump	1
8	00-427755-000G1	Rocker Switch Assy.	1
9	00-426805-000G1	Switch Assy.	1
10	00-418786-00001	Valve - Check	1
11	00-946036	O-Ring (For Single O-Ring Receptacle)	1
12	00-976730-00001	Probe - Temp.	1
13	00-976588	Control - High Limit	1
14	00-427759-00003	Board - Interface	1
15	00-419967-00005	Cord - Power Supply (84 In.)	1
16	00-419967-00003	Jumper - Extension (24-1/2 In.)	1
17	00-427755-000G1	Rocker Switch Assy.	1

