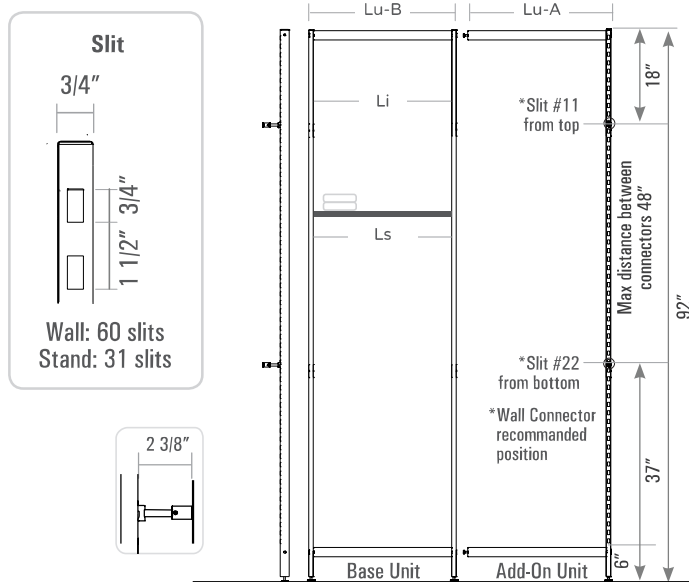


Vetrik Wall Unit

Page 1 of 4

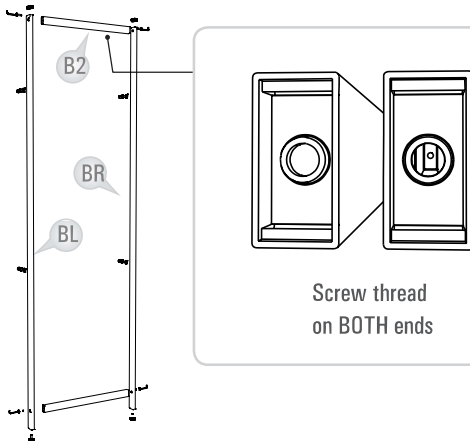
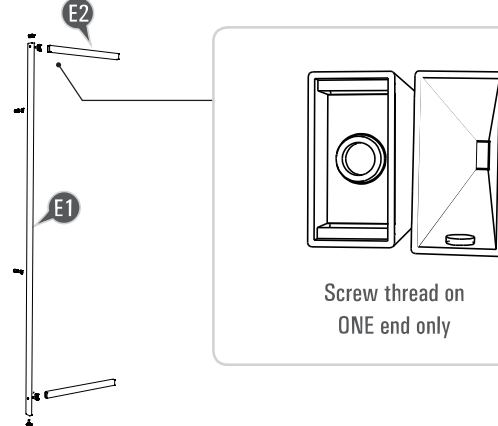


Vertik wall unit available in 2 sizes: 26" and 38"

Total Width	26"		38"	
	Base (B)	Add-On (A)	Base (B)	Add-On (A)
Lu - Unit Length	26"	25"	38"	37"
Li - Item Length	24 1/2"	24 1/2"	35 1/2"	35 1/2"
Ls- Shelf Length	24"	24"	35 1/2"	35 1/2"

Note:

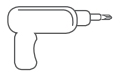
When purchase wide 38" Vertik

Base Unit**Add-On Unit****Recommended Hardware**

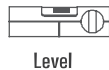
Tools and mounting hardware are not provided



Phillips Screw Driver



Screwdriver



Level

Please Note:


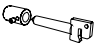


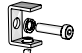

For mounting on sheet rock/drywall, we recommend using 3/16" Molly Bolts or Toggle Bolts.



Toggle Bolts

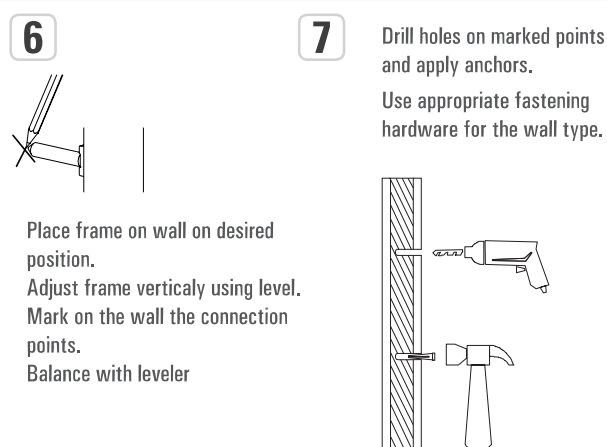
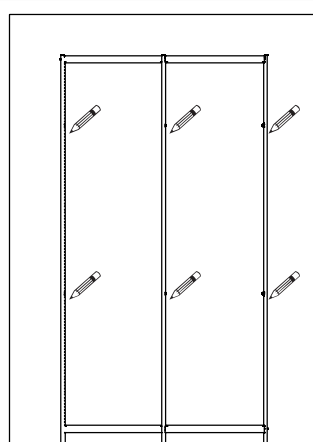
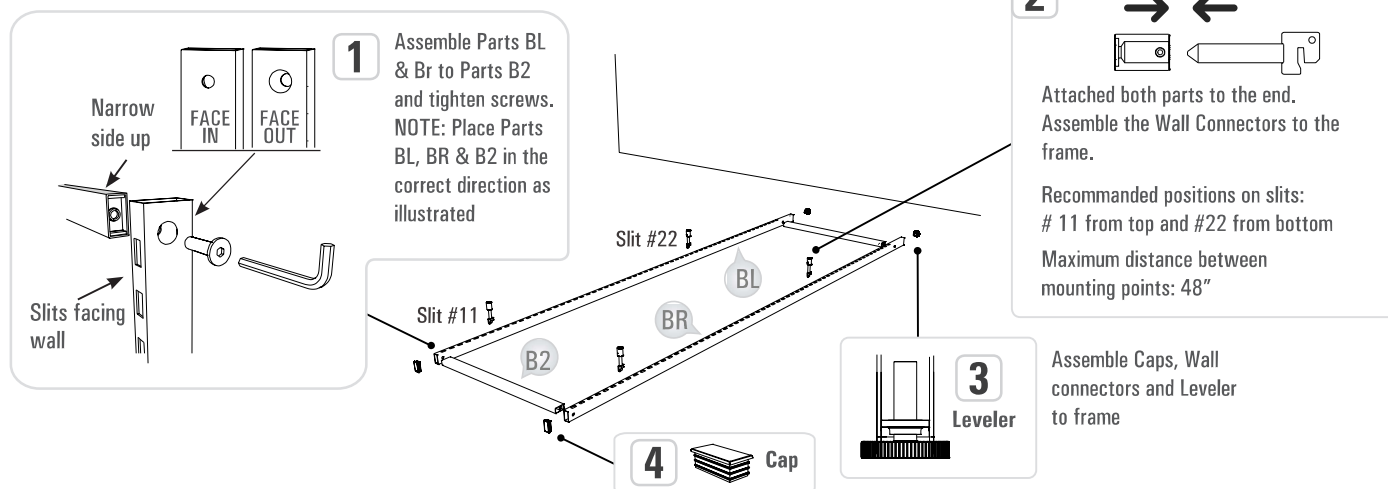


Molly Bolts

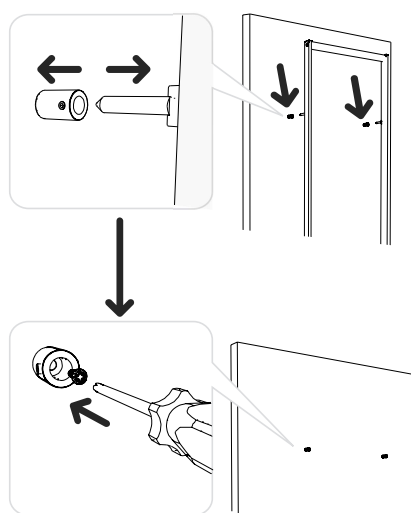
		Wall to Floor	
Hardware Provided		Base	Add-On
	Cap	2	1
	Wall Connector	4	2
	Leveler	2	1
	Flat Head Screw	4	—
	L 1 5/8" Extension Bar Connecting Set	—	2
	Allen Key Set- Metric #	# 2.5 & #5	#2.5, #4 & #6

Vetrik Wall Unit

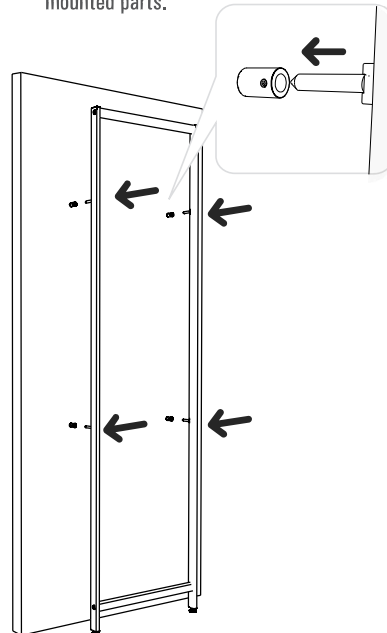
Connect all the parts on the floor surface, slits facing up



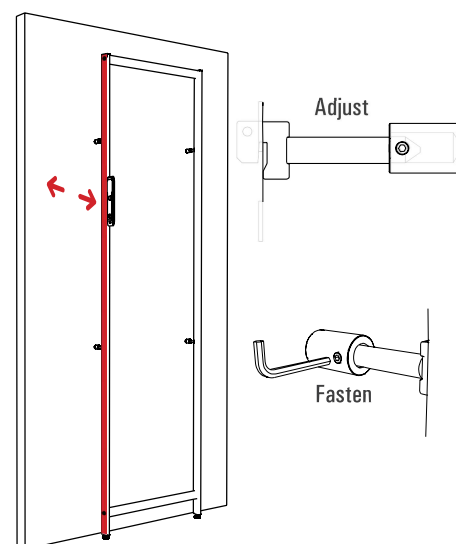
8 Detached Wall Connectors parts from frame. Mount the back part to the wall using screws.



9 Assemble frame onto the mounted parts.



10 Use a level to ensure accurate vertical positioning. Fasten all screws on Wall Connector with Allen Key



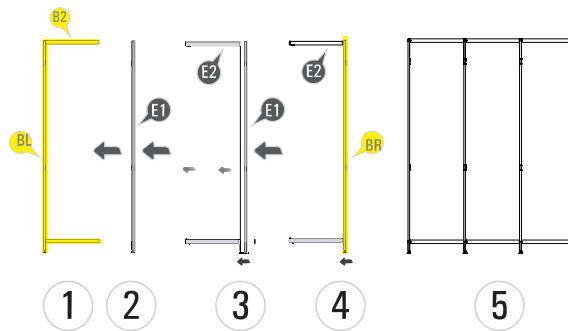
Vetrik Wall - Multiple Units

Page 3 of 4

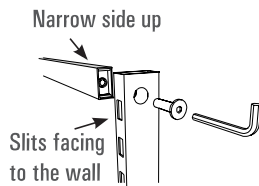
Maintain the assembly order as illustrated.

**Note:**

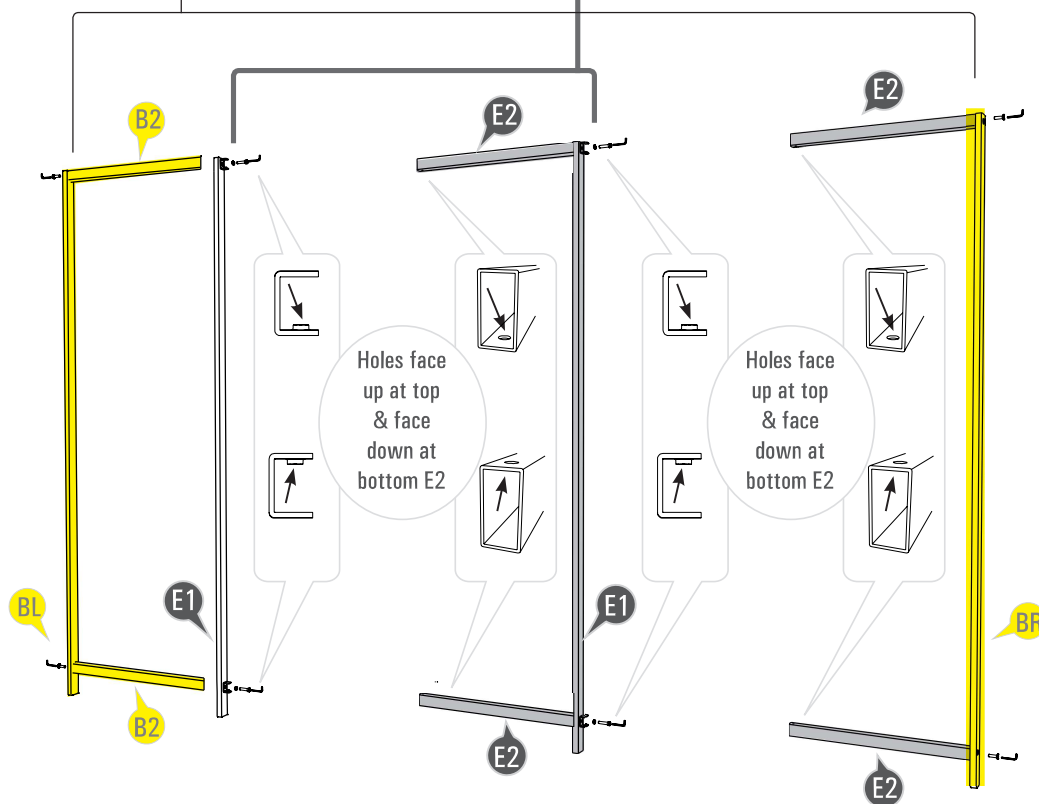
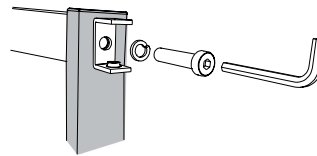
38" Kit packing includes also 24" upper & lower connecting beams (B2, E2), which will not be necessary

**FOR LEFT & RIGHT END SECTION**

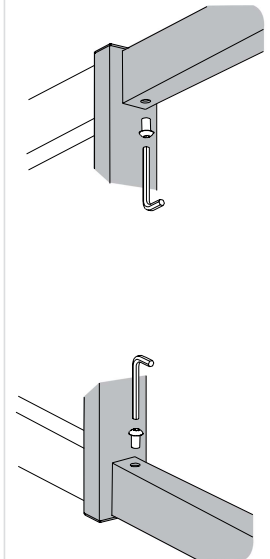
Place Parts BL, B2 & E1 in the correct direction as illustrated

**FOR MIDDLE SECTION**

Assemble Part E1 to Parts B2/E2 with "Extension Bar Connecting Set" at top and bottom, as illustrated. Fasten screws



Fasten screws on E2 at TOP and BOTTOM.



Wall Unit and Mid Floor Stand Unit

Accessories

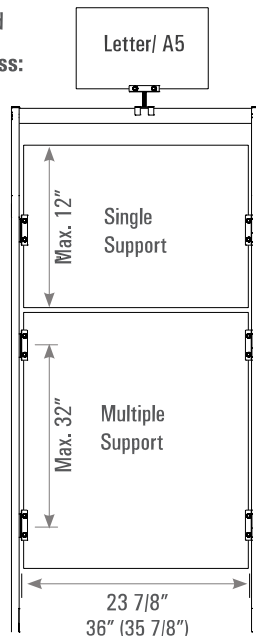
Signage

Sign Width: 23 7/8"

Sign Type:

Acrylic and Poster
PVC foam board

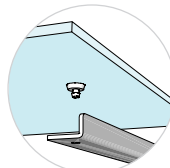
Sign Thickness:
Up to 1/4"



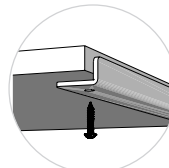
Shelf

Required Shelf Width:
24" (23 7/8" include edge banding)

Shelf Type & Thickness:

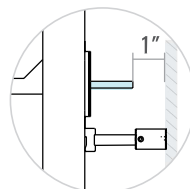


Glass Shelf:
1/4" - 3/8"



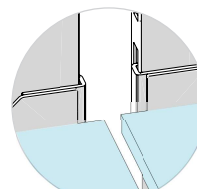
Wood Shelf:
3/4" Min.

Safe Spacing



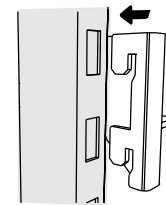
Wall Mounted

Allow 1" from the wall to shelf, to easily change the shelf location

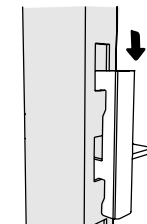


Mid Floor Stand

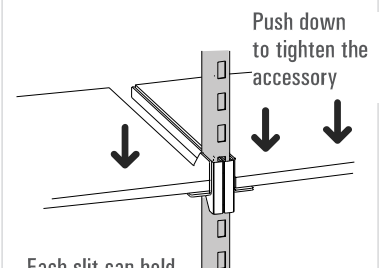
Allow 3/4" from front and back shelves, to easily change the shelf location



Slide into slits at the desired height



Slide down with a little pressure. Note: make sure its fully inserted into position.



Each slit can hold two accessories

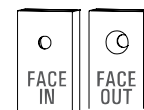
Profile Cutting

Note: When there is a need to cut Vertik Profiles

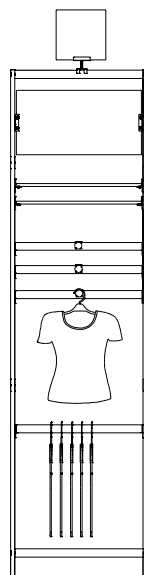
1 – Best to cut the profile from it's top end

2 – A hole will need to be made on each side of the profile after cutting.

The hole diameter of the inner side is 3/8" and the outer hole is 5/8"

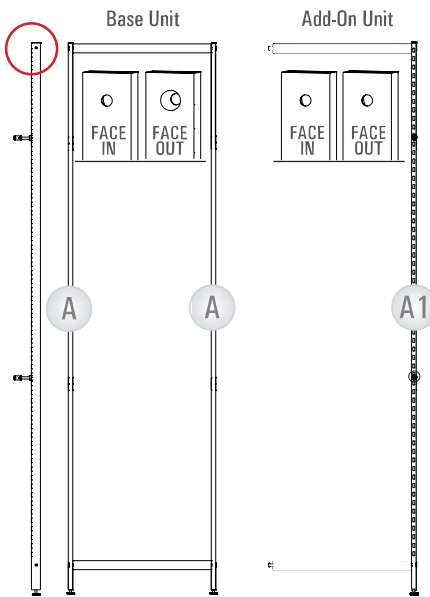


Max Weight Load



Item #	Description	Max Weight Load
VRS03-WB	26" Wall Unit - Base	400lbs
VRS03-WE	26" Wall Unit - Add-On	200lbs
VRS02-WB	26" FloorStand - Base	330lbs
VRS02-WE	26" FloorStand - Add-On	170lbs
VRS02-FB-36	38" FloorStand - Base	250lbs
VRS02-FE-36	38" FloorStand - Add-On	90lbs
VR19DB/WH	Hanging Rail For Clothing	44lbs
VR110DB/WH	Hanging Rail For Hooks & Accessories	66lbs
VR114DB/WH	12" Faceout Ø3/4"	37lbs
VR123DB/WH	12" Hook Ø5/16"	22lbs
VR115DB/WH	10" Shelf Bracket for 10"-12" shelves	55lbs Per Shelf
VR116DB/WH	14" Shelf Bracket for 12"-14" shelves	44lbs Per Shelf
VR119DB/WH	Side Sign/Mirror	22lbs
VR118DB/WH	Sign Displayer	9lbs
VR140DB/WH	Shoe Display – Rectangle Shelf	10lbs

Cut Vertik

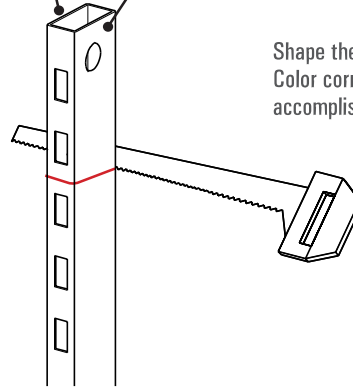
**1**

Mark the cut position at the top of:
A For base unit x2
A1 For add-on unit

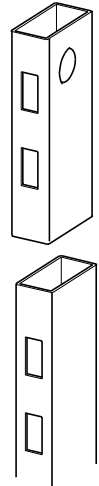
Cut according to the marking.

Repeat step 1 to all A and A1 in your setting

Face in Face out



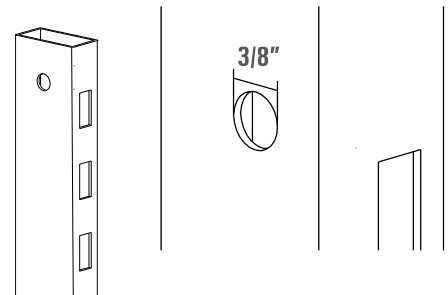
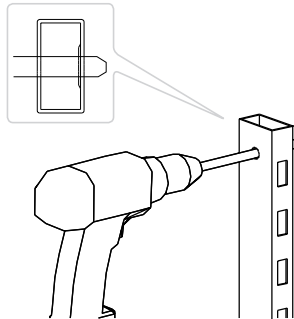
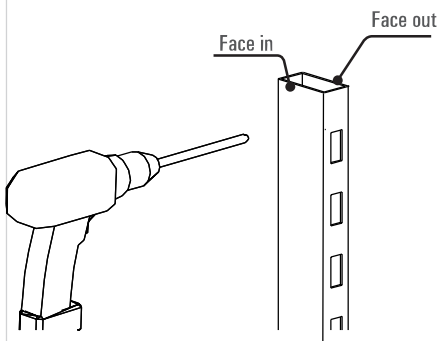
Shape the cut part.
Color correction can be accomplished with spray paint

**2** Base Unit and Add-On (A & A1)

From the inside, drill hole 3/8" that goes through the column's ends

3

Check the size of the hole with the Screw Extension Bar Connecting Set - from the hardware provided kit

**4** Base Unit (A)

The face out hole on the base unit needs to be enlarged to 5/8"
With caution, enlarge the hole without going to the face in hole

5

Check the size of the hole with the Flat Head Screw - from the hardware provided kit

