

600C2S2424KD

Two Shelf Utility Cart

Assembly Instructions

PARTS:

- (A) Left Front Angle Support – 1 pc
- (B) Right Front Angle Support – 1 pc
- (C) Left Back Angle Support – 1 pc
- (D) Right Back Angle Support – 1 pc
- (E) Handle – 1 pc
- (F) Bottom Shelf – 1 pc
- (G) Top Shelf – 2 pcs
- (H) Standard Casters – 2 pcs
- (I) Locking Casters – 2 pcs

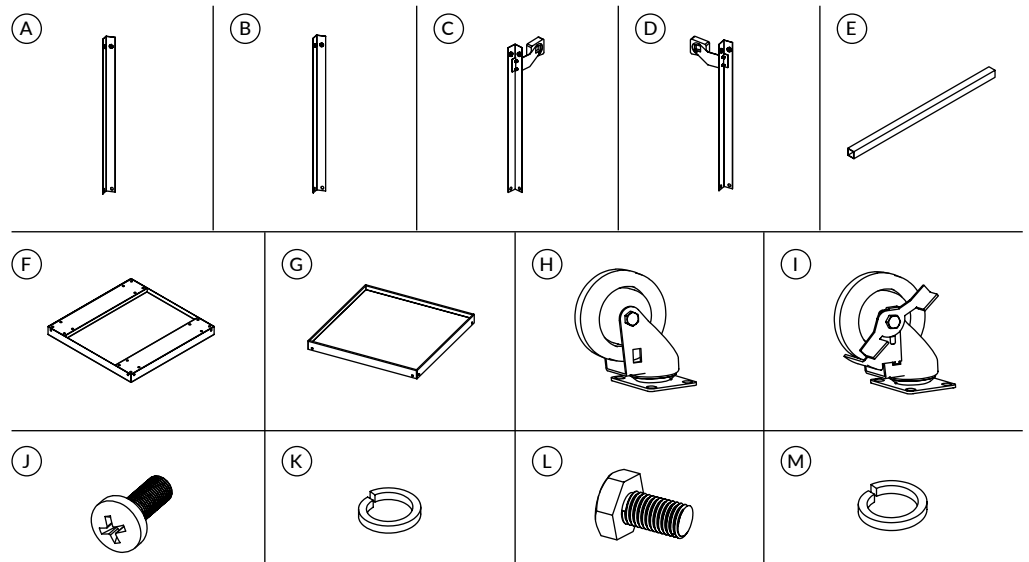
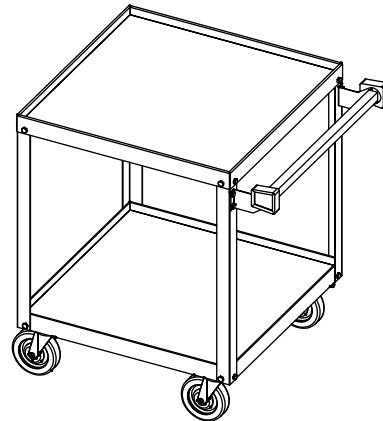
HARDWARE:

- (J) M6×16 Bolts – 20 pcs (4 extras)
- (K) M6 Washers – 20 pcs (4 extras)
- (L) M8×16 Bolt – 16 pcs
- (M) M8 Washers – 16 pcs

TOOLS NEEDED:

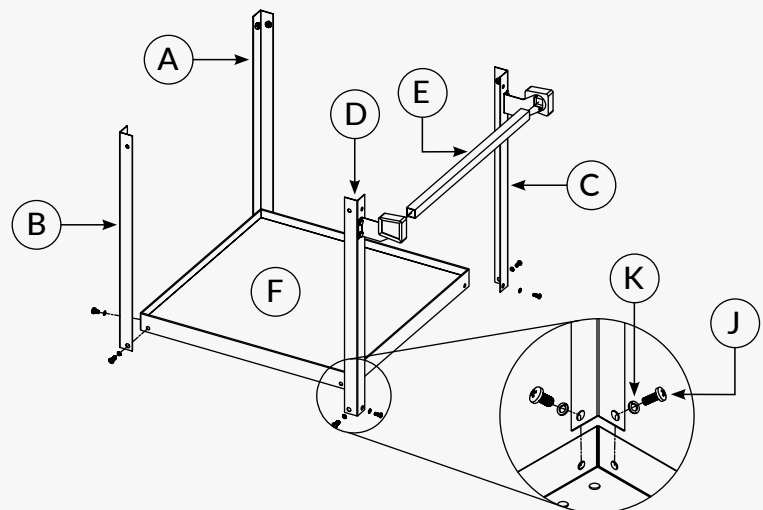
- Wrench or socket (M8)
- Screwdriver (M6)

Verify that all components are included before assembly.



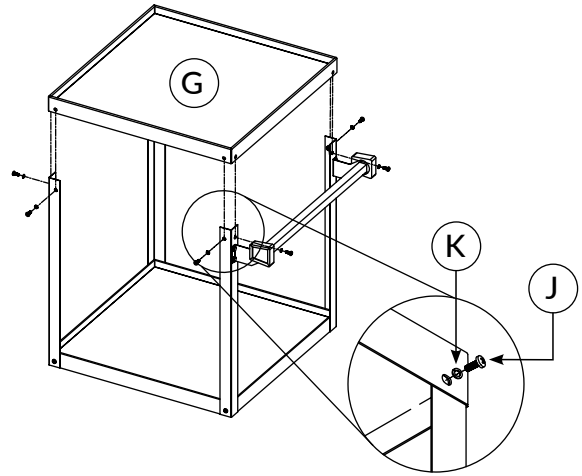
Step 1: Assemble Base Frame

1. Lay out the four angled frame supports (A, B, C, D).
2. Attach the frame supports to the bottom shelf (F) using 8 M6×16 bolts (J) and 8 M6 washers (K).
3. Position the handle (E) between the frame supports (D, C).
4. Keep bolts slightly loose for alignment.



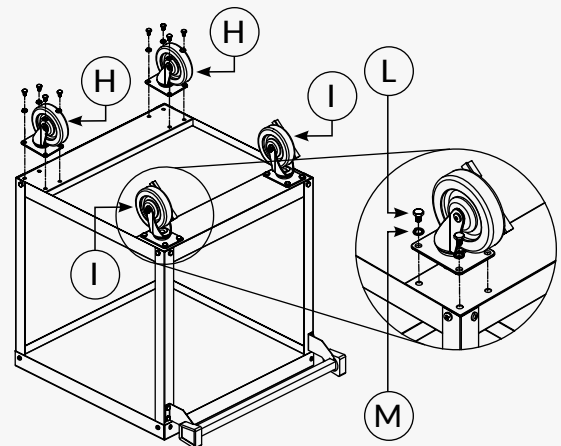
Step 2: Install Top Shelf

1. Position the top shelf (G) onto the assembled base frame.
2. Align mounting holes with the vertical supports.
Secure using 8 M6×16 bolts (J) and 8 M6 washers (K).
Tighten evenly.



Step 3: Install Casters

1. Turn the assembled frame assembly upside down.
2. Install 2 locking casters (I) on the handle side using 4 M8×16 bolts (L) and 4 M8 washers (M) for each caster.
3. Install the 2 standard casters (H) on the opposite side using 4 M8×16 bolts (L) and 4 M8 washers (M) for each caster.
4. Tighten all casters securely to ensure stability.



Final Assembly Check

- Tighten all bolts and nuts fully.
- Ensure shelves are level and secure.
- Confirm casters roll smoothly and brakes function properly.
- Check that the handle is firmly attached.