

Twist Lock FAQ's

Information can be found on page 9 of the owner's manual

Q: My old blender has a different type of sound cover can I use the new twist lock cover?

A: If your blender has the locking tab motor adapter design you can use a twist lock cover.

Q: I have a new blender with a twist lock cover, can I use my old magnetic style cover on this machine?

A. No the older blenders had magnets in the blender base that held the cover down, the new twist lock motor bases do not have magnets.

Q: My new twist lock blender does not have an isolation gasket, do I need one?

A. No, with the new twist lock cover the isolation gasket is not needed

Q: I have a new blender with a twist lock motor adapter plate with an isolation gasket and a magnetic style cover, can I switch to the new twist lock design?

A: Yes you can use either type of cover on this design.

Q: I have several older units with magnetic sound covers, I just purchased a new blender and it has the twist lock cover. I would like to switch all my blenders to the twist lock design.

A: Vitamix is currently not offering an upgrade package to convert your old machines to twist lock design.

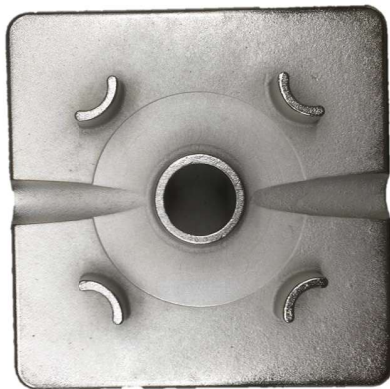
Q: I just had my blender in for repair and when it was returned it has a twist lock motor plate, can I still use my magnetic cover and isolation gasket?

A: Yes you can still use your magnetic style cover, or you can upgrade to the new twist lock cover and eliminate the isolation gasket.

Twist Lock FAQ's

Q: Can I put a new Twist Lock sound cover on my older blender?

A: If your motor adapter plate looks like the one shown below you will not be able to install a Twist Lock Sound Cover.



Q: Is Vitamix going to offer a retrofit kit to update my older blender?

A: Vitamix will not be offering a retrofit kit for the older style blenders.

Q: If my Motor Adapter Plate looks like the one pictured below with the 4 tabs on the corners will I be able to use the Twist Lock Sound Cover?

A: Yes a Twist Lock Sound Cover will fit with this style Motor Adapter Plate



Note: you will also need to replace your standard centering pad with a Twist Lock Centering Pad to ensure correct operation.

Items required: Rear Sound cover (067877) and Twist Lock Centering Pad (067876)

