

600CT1931KD / 600CT1627KD

# Three Shelf Utility Cart

## Assembly Instructions

**PARTS:**

- (A) Bottom Shelf - 1 pc
- (B) Middle Shelf - 1 pc
- (C) Top Shelf - 1 pc
- (D) Left Front Angle Support - 1 pc
- (E) Left Back Angle Support with Handle Base - 1 pc
- (F) Right Front Angle Support - 1 pc
- (G) Right Back Angle Support with Handle Base - 1 pc
- (H) Standard Casters - 2 pcs
- (I) Locking Casters - 2 pcs
- (J) Handle - 1 pc

**HARDWARE:**

- (K) M8x20 Bolts - 16 pcs
- (L) M6x12 Bolts - 16 pcs
- (M) M4x10 Bolts - 4 pcs

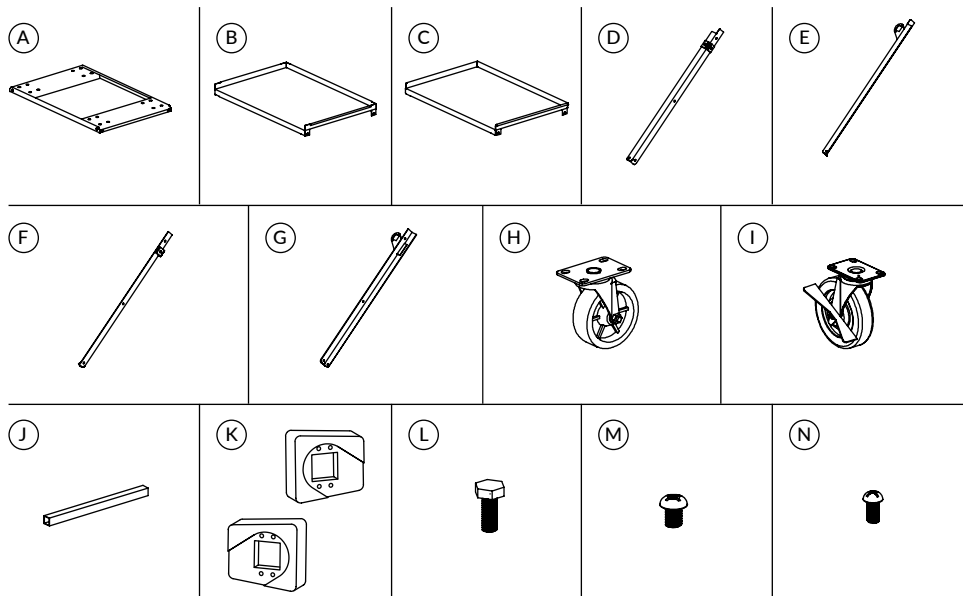
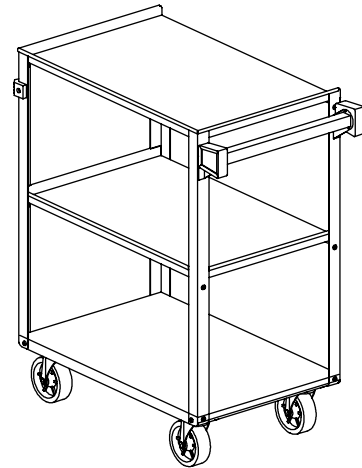
**TOOLS NEEDED:**

- Socket wrench (M8, M6)
- Screwdriver (M4)

Verify that all components are included before assembly.

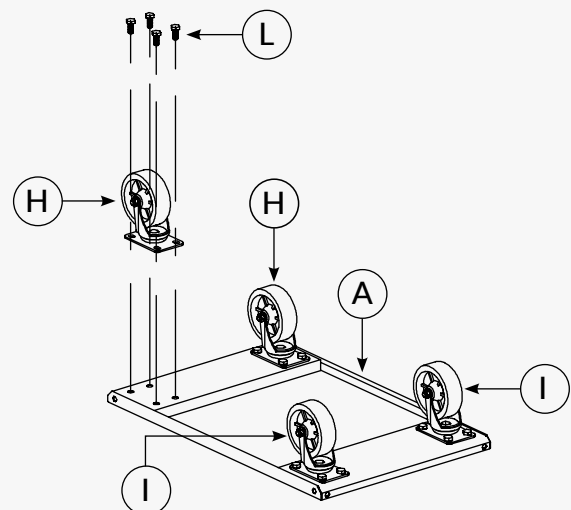
**SAFETY WARNING:**

- *Stainless steel edges may be sharp and can cause injury.*
- *Wear gloves and handle all parts carefully.*



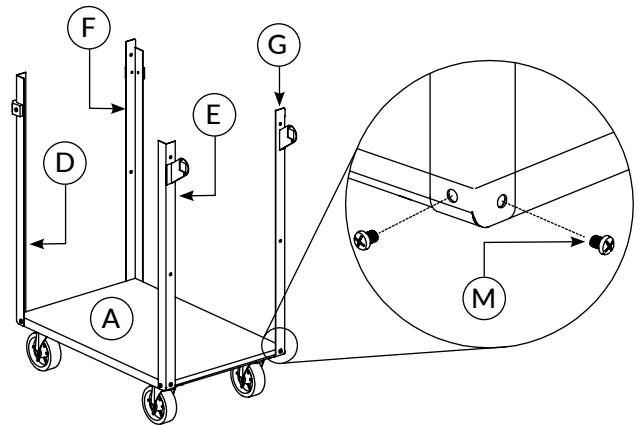
### Step 1: Install Casters

1. Place the bottom shelf (A) upside down on a flat surface.
2. Install 2 standard casters (H) onto the bottom shelf using 4 M8 x 20 bolts (L) for each caster.
3. Install 2 locking casters (I) onto the bottom shelf using 4 M8 x 20 bolts (K) for each caster. Ensure the locking casters are on the same side for easier operation.
4. Fully tighten all hardware.



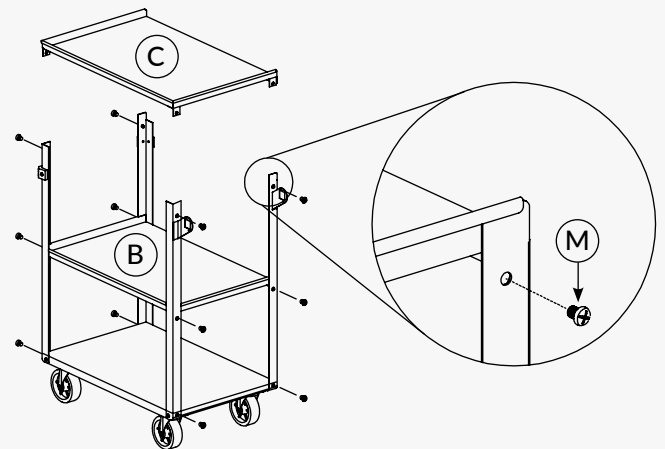
## Step 2: Assemble Bottom Frame

1. Flip the bottom shelf (A) right-side up.
2. Attach the 4 angle supports (D-G), aligning the holes in the bottom corners with the holes in the bottom shelf, using 2 M6×12 bolts (M) for each support.  
Note: The supports with handle bases should be mounted on the side of the locking casters.
3. Leave bolts slightly loose for alignment.



## Step 3: Attach Shelves

1. Install the middle shelf (B) between the supports using 1 M6×12 bolt (M) for each support.
2. Place the top shelf (C) onto the top of the frame and secure using 1 M6×12 bolt (L) for each support.
3. Tighten all hardware evenly to ensure shelves are level. Tighten bottom frame bolts as well.



## Step 4: Attach Handle

1. Position the handle (J) onto the handle bases (K). Secure using 4 M4×10 bolts (N).
2. Tighten fully.

## Final Assembly Check

- Fully tighten all bolts and hardware.
- Ensure all shelves are level and secure.
- Verify all casters roll freely and brakes function properly.
- Confirm handle is securely attached.

