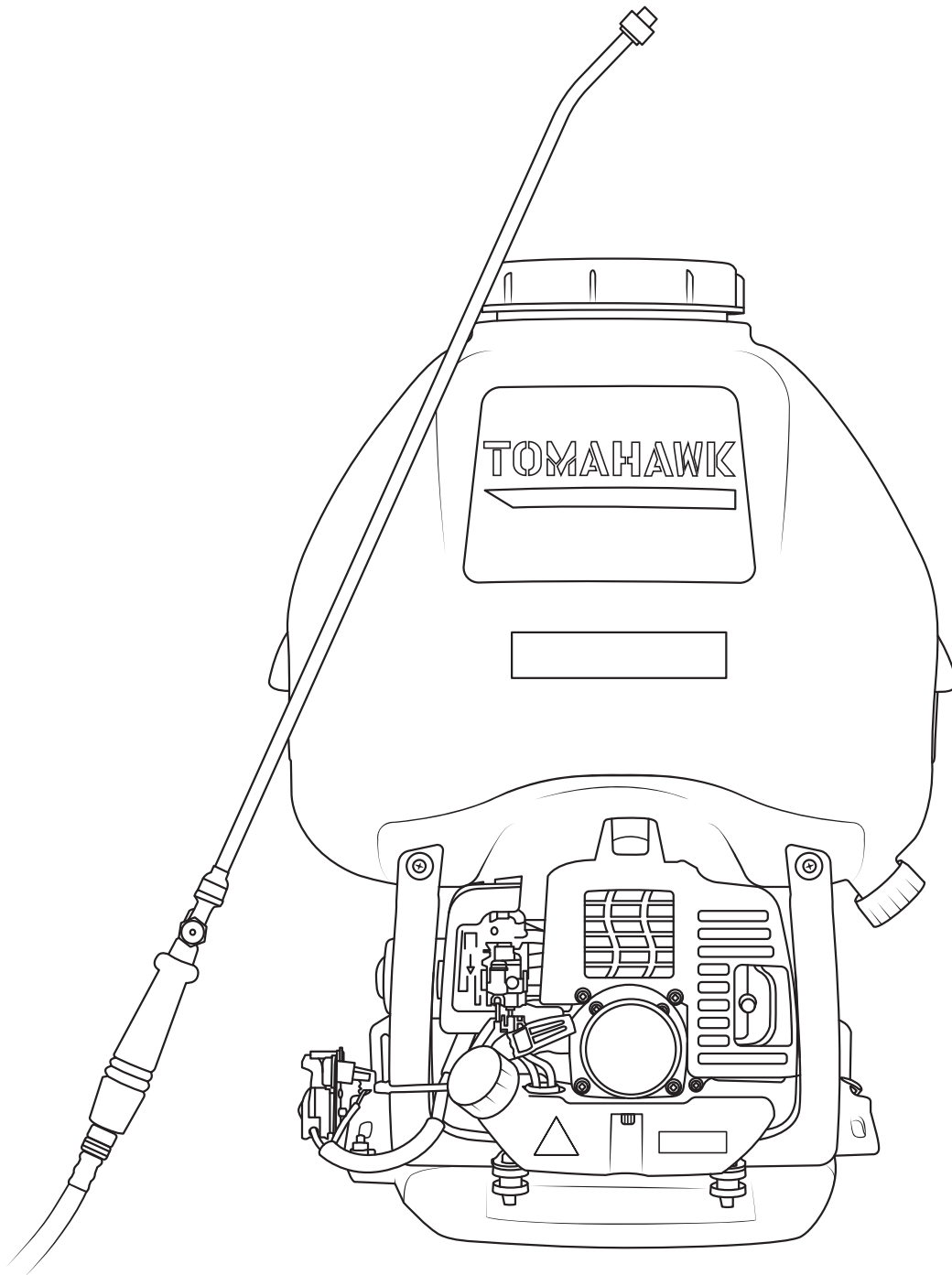


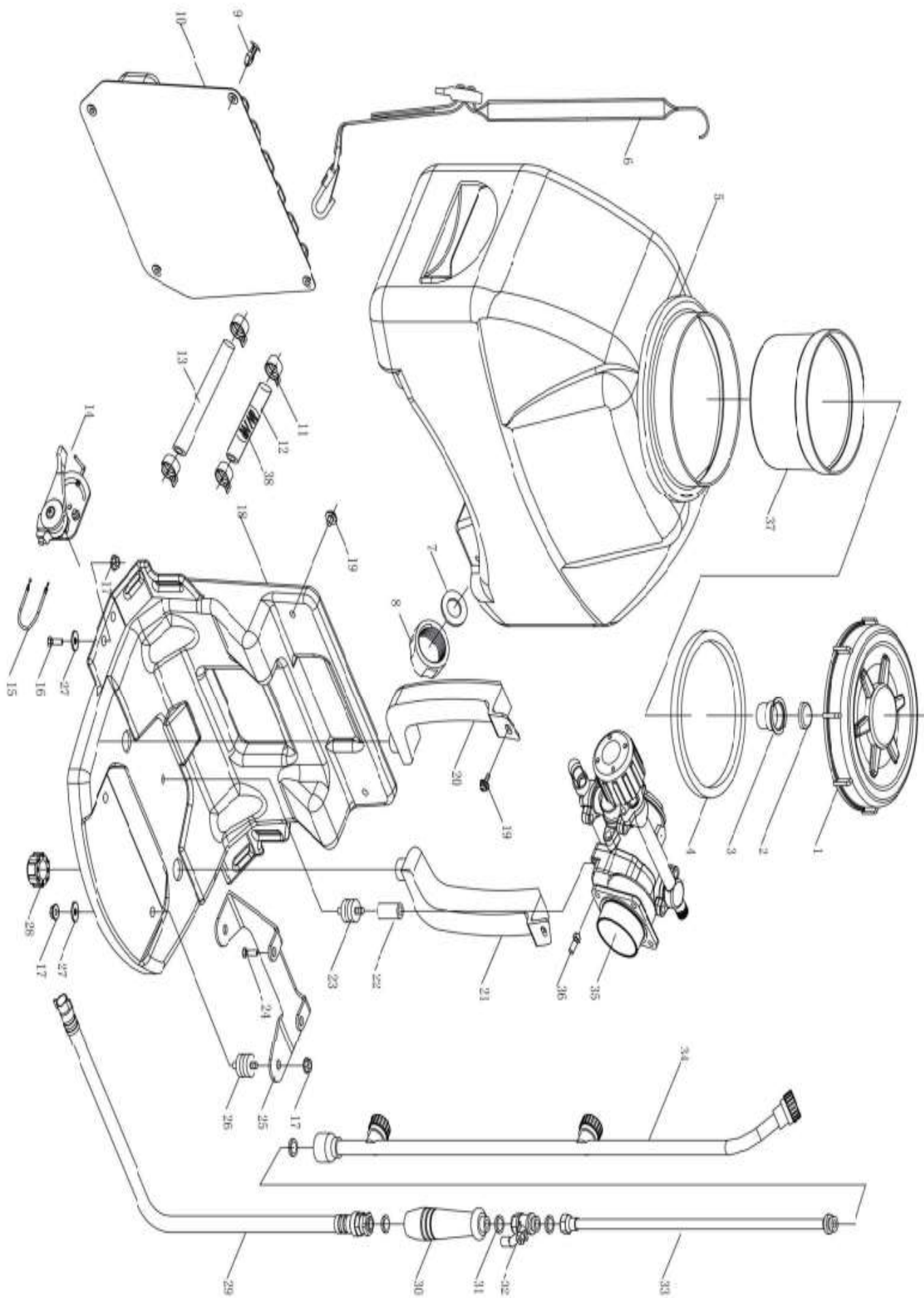
TOMAHAWK

6.5 GALLON MOTORIZED CONCRETE SPRAYER

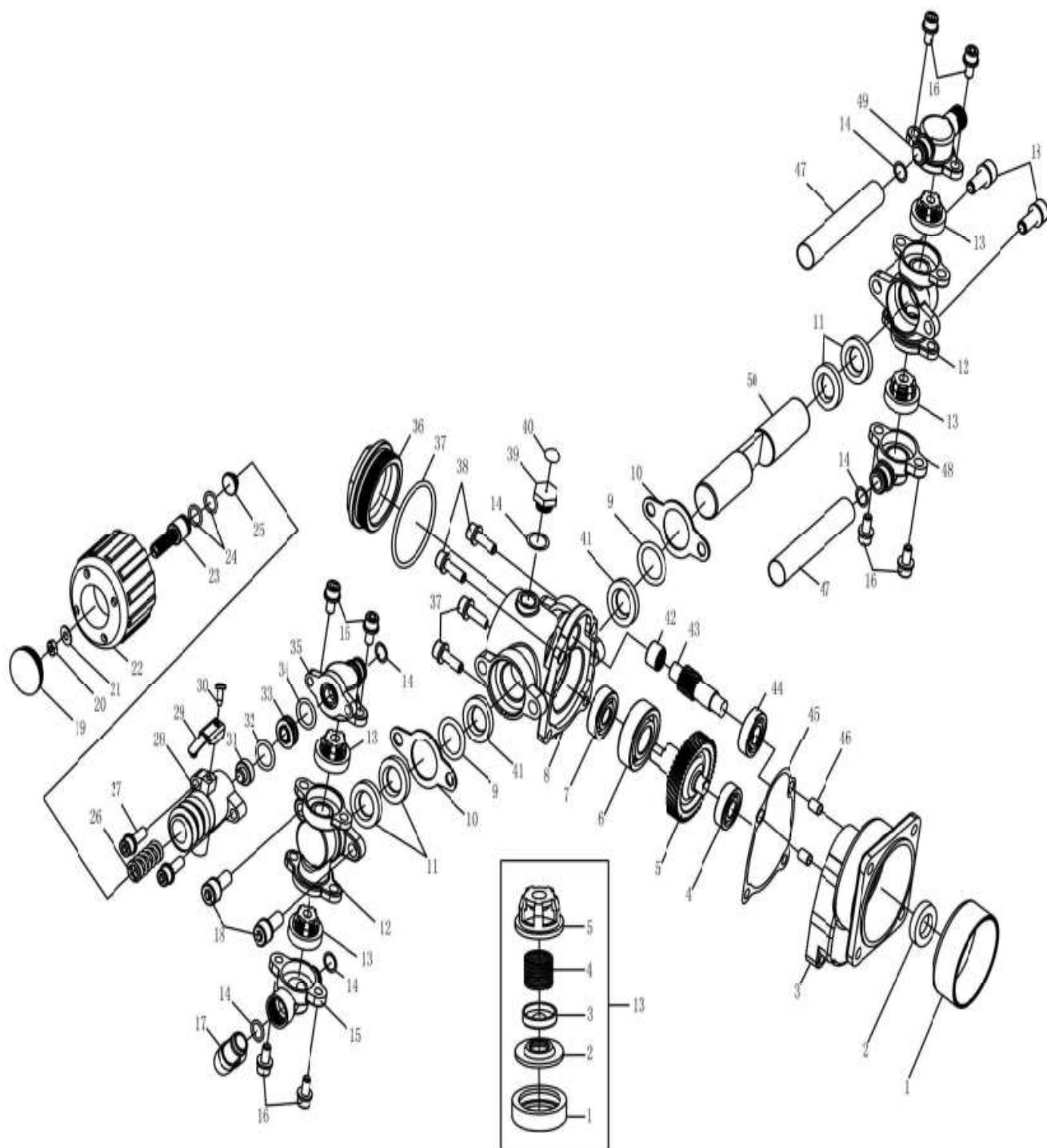
MODEL NUMBER: TCS6.5

Parts Manual



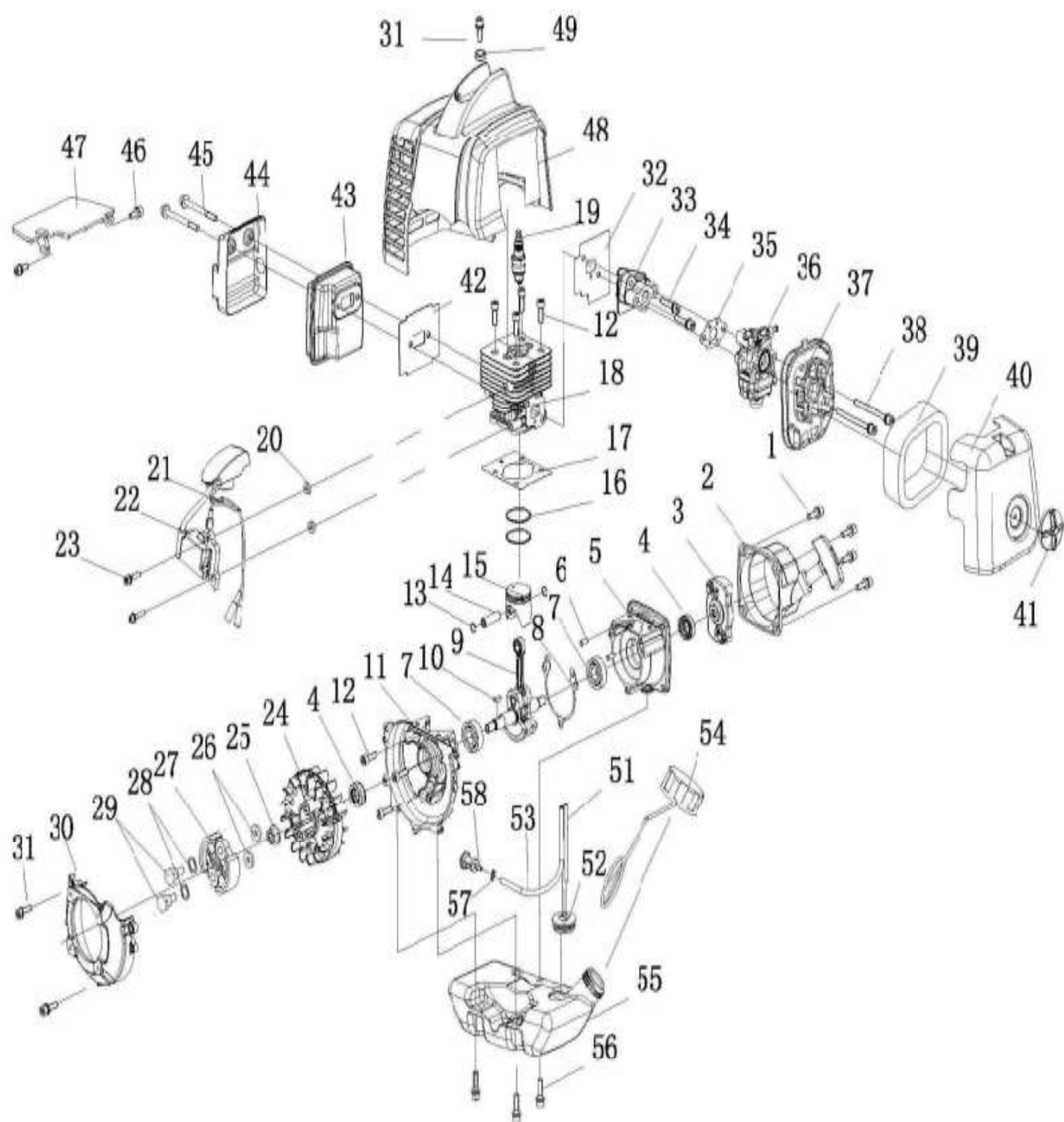


NO.	Part NO.	Part Name	Qty.
1	3WZ-6.5.2-1	LID	1
2	3WZ-4.7.1-3	LID	1
3	3WZ-4.7.1-4	LID	1
4	3WF-8.1-1	SEALING WASHER	1
5	3WZ-6.5.1	CHEMICAL TANK	1
6	3WZ-9.2	BANDS ASSM	2
7	3WF-3A.1-2	SEALING WASHER	1
8	3WZ-6.5-1	LID	1
9	3WF-14-13	PLASTIC CLICK	4
10	3WZ-9.1	BACK DACK ASSM	1
11	QC/T621 Q673B15	CLIP	4
12	GB13527.1LS-10×2.5×140	TUBE	1
13	GB13527.1LS-10×2.5×340	TUBE	1
14	3WZ-9.5	SWITH	1
15	3WZ-4C.3	FREL THROTTLE	1
16	GB/T29.2+GB/T96	SCREW ASSY M6×20	2
17	GB/T6177.1 M6	NUT M6	7
18	3WZ-6-4	FRAME	1
19	GB/T823+GB/T96	SCREW M6×12	4
20	3WZ-6-9	LEFT SUPPORT	1
21	3WZ-6-5	RIGHT SUPPORT	1
22	3WZ-9-1	SUPPORT MOUNT	1
23	3WZ-7B.2B	RUBBER MOUNT	1
24	GB70+GB93+GB97	SCREW ASSEM 5×20	2
25	3WZ-6F-1C	CONNECT PLATE	1
26	3WZ-6.1	RUBBER MOUNT	2
27	GB/T 96	WASHER 6	5
28	3WZ-6-2	PLASTIC NUT	2
29	3WZ-6.6	RUBBER TUBE ASSY	1
30	3WZ-4.11	HANDLE	1
31	3WZ-4-10	SEAL RING	4
32	3WZ-4.12	VALVE	1
33	3WZ-4.13	STAIGHT SPRAYING TUBE	1
34	3WZ-4.14	LONG NOZZLE	1
35	3WZ-7B.5	PISTON PUMP	1
36	GB/T 9074.13	SCREW M6×16	4
37	3WZ-7.2.2	FILTER ASSM	1
38	3WZ-4.7.4-2A	SPRING	1



NO.	Part NO.	Part Name	Qty.
1	3WZ-7B.5-1	CLUTCH DRUM COVER	1
2	1E36F.2	SEAL	1
3	3WZ-7B.5.1-1	CONNECTING BASE	1
4	GB/T276	BEARING 6000/P6	1
5	3WZ-7B.5.1-4	WHEEL	1
6	GB/T276(17x42x12)	BEARING 6203x3	1
7	GB/T276(10x32x9)	BEARING 6200x1	1
8	3WZ-7B.5.1-2	NOUMENON	1
9	GB/T3452.1	O-RING 21.2×1.8	2
10	3WZ-7B.5-6	BAFFLE	2
11	3WZ-7B.5.3-4	WATER SEAL	4
12	3WZ-7B.5.3-3	CYLINDER STATOT	2
13	3WZ-7B.5.2A	CHECK VALVE	4
14	GB/T6659	O-RING 10×2	6
15	3WZ-7B.5.4-1	WATER CHAMBER B	1
16	GB70.1+GB93	SCREW ASSM M6X12	8
17	3WZ-7B.5-5	WATER INLET	1
18	GB70.1+GB93	SCREW ASSM M8X20	4
19	3WZ-7B.5.5-8	HANDLE CAP	1
20	GB6172	NUT M8	1
21	GB97.1	WASHER 8	1
22	3WZ-7B.5.5-1	HANDLE	1
23	3WZ-7B.5.5-3	REGULATING SCREW	1
24	GB/T6659	O-RING 10×1.8	2
25	3WZ-7B.5.5-6	SPRING SEAT 2	1
26	3WZ-7B.5.5-5	SPRING	1
27	GB70.1	SCREW ASSM M6X16	2
28	3WZ-7B.5.5-2	VALVE	1
29	3WZ-7B.5.5.1	BATTER BOARD	1
30	GB845ST4.2X10	SCREW ASSEM	1
31	3WZ-7B.5.5-4	SPRING SEAT 1	1
32	GB3452.1	O-RING 12.5×2.65	1
33	3WZ-7B.5.5-7	VALVE SEAT	1
34	GB3452.1	O-RING 11.8×1.8	1
35	3WZ-7B.5.3-2	DISCHARGE METAL A	1
36	3WZ-7B.5-3	BOX BACK COVER	1
37	GB/T3452.1	O-RING 46.2×2.65	1
38	GB70.1+GB93	SCREW ASSM M6X20	4

NO.	Part NO.	Part Name	Qty.
39	3WZ-7B.5-2A	BOLT	1
40	3WZ-7B.5-7	PASTER	1
41	3WZ-7B.5.1-7	OIL SEAL	2
42	GB/T290 HK1010	BEARING	1
43	3WZ-7B.5.1-3	GEAR SHAFT	1
44	GB/T276	BEARING 6001 P5	1
45	3WZ-7B.5.1-6	SEALING WASHER	1
46	6MF-30.1-14	PIN	2
47	3WZ-7B.5-4	TUBE	2
48	3WZ-7B.5.3-1	WATER CHAMBER A	1
49	3WZ-7B.5.4-2	DISCHARGE METAL B	1
50	3WZ-7B.5.1-5	PLUNGER	1
13-1	3WZ-7B.5.2-1	BALL SEAT	1
13-2	3WZ-7B.5.2-2	VALVE DISK	1
13-3	3WZ-7.5.2-3	VALVE BLOCK	1
13-4	3WZ-7B.5.2-4A	VALVE SPRING	1
13-5	3WZ-7B.5.2-5	VALVE BONNET	1



NO.	Part NO.	Part Name	Qty.
1	GB70.1+GB93+GB97	Screw M5×16	4
2	P23.10A	Starter	1
3	P23.9A	Guide Cover Ass'y	1
4	1E36F.2	Oil seal	2
5	P23.11-2	Crank case R	1
6	GB/T119.1	Pin 4×h8×8	2
7	GB/T276	Bearing 6001/P53	2
8	P23.11-3	Gasket crank case	1
9	P23.6A.1	Crank shaft assy	1
10	1E40FP-3Z.3-1	Key	1
11	P23.11-1	Crank case F	1
12	GB/T70.1	Screw M5×16	7
13	1E34F.6-2	Ring snap	2
14	1E31F.4-2	Piston pin	1
15	P23.6A-1	Piston	1
16	P23.6-2	Ring piston	2
17	P23-2	Gasket cylinder	1
18	P23-1	Cylinder	1
19	CMR6A	Spark plug	1
20	P40-5	Spacer lg coil	2
21	1E40F-5.3.1	Wire lead assy	1
22	HP23.2.1-SZ.2	IG coil	1
23	GB70.1+GB93+GB97	Screw M4×20	2
24	HP23.2.1-SZ.1	Rotor magnet	1
25	GB/T6177	Nut M8	1
26	1E34F-11	Wave washer	2
26A	1E34F.10	Clutch assy	1
27	1E34F-13	Washer	2
28	1E34F-12	Clutch bolt	2
29	HP23-1	Fan Cover	1
30	GB70.1+GB93+GB97	Screw M5×18	3
31	P23-7	Gasket insulator	1
32	P23.3	Insulator	1
33	GB70.1+GB93+GB97	Screw M5×25	2
34	1E36F-2A-1	Gasket carburetor	1
35	1E34F-2E.1A	Carburetor	1
36	1E34F.1.1	Cleaner base assy	1
37	GB70.1+GB97.1	Screw M5×60	2
38	1E34F.1-1	Air filter element	1

NO.	Part NO.	Part Name	Qty.
39	HP23.1-1	Cover Cleaner	1
40	1E34FG.1.1	Knob cover	1
41	1E34F-3	Gasket muffler	1
42	1E34F-2E.2	Muffler	1
43	HP23-5A	Cover	1
44	HP23-8	Screw M5×55-10.9	2
45	GB70.1+GB93+GB97	Screw M5×14	2
46	HP23-2	Clapboard	1
47	HP23.3	Top cover	1
48	1E33F-4	Spacer lg coil	1
49	GB70.1+GB93+GB97	Screw M5×18	1
50	1E44F-E.5.1-2-EPA	Fuel Pipe $\phi 5 \times \phi 2.5 \times 100$	1
51	1E36FF.8.1-1	Plug	1
52	1E44F-E.5.1-1-EPA	Fuel Pipe $\phi 5.5 \times \phi 3 \times 165$	1
53	1E32FL.6.2B	Tank cap assy	1
54	HP23.6.1	Fuel tank	1
55	GB70.1+GB93+GB97	Screw M5×16	3
56	P23.12-1	Snap Rings	1
57	P40.12.2-3A	filter	1

12. CALIFORNIA AND FEDERAL EMISSION CONTROL WARRANTY STATEMENT YOUR WARRANTY RIGHTS AND OBLIGATIONS

The California Air Resources Board, the United States Environmental Protection Agency and Tomahawk Power, LLC are pleased to explain the emissions control system warranty on your 2022-2023 small engine/equipment (SORE). In the United States and California, new small engine/equipment must be designed, built and equipped to meet the State's stringent anti-smog standards. Tomahawk Power, LLC must warrant the emissions control system on your small engine/equipment for the periods of time listed below provided there has been no abuse, neglect or improper maintenance of your small engine/equipment.

Your emission control system may include parts such as the carburetor, fuel-injection system, the ignition system, catalytic convertor, fuel tanks, fuel lines, fuel caps, valves, canisters, filters, vapor hoses, belts, clamps, connectors, and other associated emission-related components. For engines less than or equal to 80 cc, only the fuel tank is subject to the evaporative emission control warranty requirements of this section.

(California Only)

Where a warrantable condition exists, Tomahawk Power, LLC will repair your small off- road engine/equipment at no cost to you including diagnosis, parts and labor.

MANUFACTURER'S WARRANTY COVERAGE:

The emissions control system is warranted for two years. If any emissions-related part on your small engine/equipment is defective, the part will be repaired or replaced by Tomahawk Power, LLC

OWNER'S WARRANTY RESPONSIBILITIES:

As the small engine/equipment owner, you are responsible for the performance of the required maintenance listed in your owner's manual. Tomahawk Power, LLC recommends that you retain all receipts covering maintenance on your small engine/ equipment, but Tomahawk Power, LLC cannot deny warranty solely for the lack of receipts or for your failure to ensure the performance of all scheduled maintenance.

As the small engine/equipment owner, you should however be aware that Tomahawk Power, LLC may deny your warranty coverage if your small engine/equipment or a part has failed due to abuse, neglect, improper maintenance or unapproved modifications.

You are responsible for presenting your small engine/equipment to distribution center or service center authorized by Tomahawk Power, LLC as soon as the problem exists. The warranty repairs should be completed in a reasonable amount of time, not to exceed 30 days.

If you have any questions regarding your warranty rights and responsibilities, you should contact Tomahawk Power, LLC customer service representative at 1-866-577-4476 or Email: support@tomahawk-power.com .

DEFECTS WARRANTY REQUIREMENTS

(a) The warranty period begins on the date the small engine/equipment is delivered to an ultimate purchaser.

(b) General Emissions Warranty Coverage. Tomahawk Power, LLC warrants to the ultimate purchaser and each subsequent owner that the engine/equipment is:

(1) Designed, built, and equipped so as to conform with all applicable regulations adopted by the Air Resources Board; and

(2) Free from defects in materials and workmanship that causes the failure of a warranted part for a period of two years.

(c) Subject to certain conditions and exclusions as stated below, the warranty on emissions related parts is as follows:

(1) Any warranted part that is not scheduled for replacement as required maintenance in your Owner's Manual is warranted for the warranty period stated above. If the part fails during the period of warranty coverage, the part will be repaired or replaced by Tomahawk Power, LLC according to Subsection (4) below. Any such part repaired or replaced under warranty will be warranted for the remainder of the period.

(2) Any warranted part that is scheduled only for regular inspection in your Owner's Manual is warranted for the warranty period stated above. Any such part repaired or replaced under warranty will be warranted for the remaining warranty period.

(3) Any warranted part that is scheduled for replacement as required maintenance in your Owner's Manual is warranted for the period of time before the first scheduled replacement date for that part. If the part fails before the first scheduled replacement, the part will be repaired or replaced by Tomahawk Power, LLC according to Subsection (4) below. Any such part repaired or replaced under warranty will be warranted for the remainder of the period prior to the first scheduled replacement point for the part.

(4) Repair or replacement of any warranted part under the warranty provisions herein must be performed at a warranty station at no charge to the owner.

(5) Notwithstanding the provisions herein, warranty services or repair will be provided at all of our distribution centers that are franchised to service the subject small engine/equipment.

(6) The small engine/equipment owner must not be charged for diagnostic labor that leads to the determination that a warranted part is in fact defective, provided that such diagnostic work is performed at a warranty station.

(7) Tomahawk Power, LLC is liable for damages to other small engine/equipment components proximately caused by a failure under warranty of any warranted part.

(8) Throughout the small engine/equipment warranty period stated above, Tomahawk Power, LLC will maintain a supply of warranted parts sufficient to meet the expected demand for such parts.

(9) Any replacement part may be used in the performance of any warranty maintenance or repairs and must be provided without charge to the owner. Such use will not reduce the warranty obligations of Tomahawk Power, LLC

(10) Add-on or modified parts that are not exempted by the Air Resources Board may not be used. The use of any non-exempted add-on or modified parts by the ultimate purchaser will be grounds for disallowing a warranty claims. Tomahawk Power, LLC will not be liable to warrant failures of warranted parts caused by the use of a non-exempted add-on or modified part.

(11) The manufacturer issuing the warranty shall provide any documents that describe that manufacturer's warranty procedures or policies within five working days of request by the Air Resources Board.

EMISSION WARRANTY PARTS LIST

The repair or replacement of any warranted part otherwise eligible for warranty coverage may be excluded from such warranty coverage if Tomahawk Power, LLC demonstrates that the small engine/equipment has been abused, neglected, or improperly maintained, and that such abuse, neglect, or improper maintenance was the direct cause of the need for repair or replacement of the part. That notwithstanding, any adjustment of a component that has a factory installed, and properly operating, adjustment limiting device is still eligible for warranty coverage. The following emissions warranty parts for each engine family list is covered.

For engine families greater than 80cc:

(1) Fuel Metering System:

- (a) Gasoline carburetor assembly and its internal components
- (b) Carburetor gaskets
- (c) Fuel tank
- (d) Fuel Line
- (e) Fuel Line Fittings
- (f) Clamps
- (g) Pressure regulator (if equipped)
- (h) Mixer assembly and its internal components (if equipped)

(2) Air Induction System including:

- (a) Intake pipe/manifold
- (b) Air cleaner

(3) Ignition System including:

- (a) Spark plug
- (b) Ignition coil



FAST TRACK YOUR CONCRETE JOB

Master your next concrete job with Tomahawk Concrete Power Screeds! Bundle & Save when choosing blades from 4ft-16ft helping you increase crew speed and jobsite efficiency!



TOMAHAWK

TOMAHAWK



TSB



Item #: TVSA-T, TVSA-H, eTVSA

VIBRATORY CONCRETE POWER SCREEDS

www.tomahawk-power.com





CUT CONCRETE FASTER

Tomahawk Green Concrete Saws cut contraction joints up to 1-3/16th inches deep - within the first 1-2 hours of finishing, to control stress cracking for the ultimate concrete results! Powered by the concrete industry's trusted Honda GX Series Engines, maintain clean cuts, while keeping debris out!



HONDA
ENGINES



Item #: TFS6H

**6" EARLY ENTRY
GREEN CONCRETE SAW**

www.tomahawk-power.com 



SEAL THE DEAL WITH THE FINISHING TOUCH

Tomahawk Power Trowels are perfect for projects including driveways, basements, and commercial jobs. Adjust from 0-28° with the trowel's 4 combo, steel blades to achieve a matte, light gloss, or gleaming finish!



KOHLER
ENGINES



Item #: JXPT36K, JXPT46K, TPT36H, TPT46H

**36" AND 46" CONCRETE
POWER TROWELS**

www.tomahawk-power.com



TOMAHAWK

PRODUCT CATALOG

COMPACTION



HONDA
ENGINES

3,550 lbs/ft Vibratory Rammer
Part#: TR68H

3.6 HP Honda GXR120 Engine
Easily achieve a 100% compaction rating
3-in-One Fuel System with carburetor protection
13" x 11" plate for narrow trenches and corners
3 Year Engine Warranty & 1 Year Product Warranty



HONDA
ENGINES

3,400 lbs/ft Plate Compactor
Part#: TPC90H

5.5 HP Honda GX160 Engine
Easily achieve a 100% compaction rating
22" x 20" cold, rolled steel beveled base plate
Includes 3.5 gallon water tank for asphalt compaction
3 Year Engine Warranty & 1 Year Product Warranty



HONDA
ENGINES

KOHLER
ENGINES

3,000 lbs/ft Plate Compactor
Part#: TPC80 & TPC80H

6 HP Kohler CH260 & 5.5 HP Honda GX160 Engines
Easily achieve a 100% compaction rating
16.5" x 21.5" plate for narrow trenches and corners
Optional Honda Engine model: TPC80H
3 Year Engine Warranty & 1 Year Product Warranty

FINISHING



6.5 Gal Backpack Concrete Sprayer
Part#: TCS6.5

Maintain constant, adjustable pressure up to 450 PSI
Achieve superior concrete finishes with even spraying
Spray 15,000 sq ft in less than 10 minutes
Compatible with major manufacturer wands
1 Year Product Warranty



HONDA
ENGINES

1.6 HP Vibratory Concrete Screed
Part#: TVSA-H

1.6 HP Honda GX35 Engine
Aluminum Magnesium blades available from 8ft - 14ft
Finish concrete 4X faster than other screed methods
360° adjustable handle placement
3 Year Engine Warranty & 1 Year Product Warranty



HONDA
ENGINES

6" Early Entry Green Concrete Saw
Part#: TFS6H

5.5 HP Honda GX160 Engine
Maximum cutting depth of 1 3/16 inches
OSHA compliant vacuum port for dust collection
Includes 6" early entry concrete blade
3 Year Engine Warranty & 1 Year Product Warranty

FINISHING



HONDA
ENGINES

1.6HP Backpack Concrete Vibrator
Part#: TVIBH + TVW10-P

1.6 HP Honda GX35 engine
Consolidation with speeds of 10,000-12,000 VPM
Quick Connect centrifugal clutch vibrator
1" and 2" Diameter Whips Available in 10ft Length
3 Year Engine Warranty & 1 Year Product Warranty



HONDA
ENGINES

KOHLER
ENGINES

36" & 46" Concrete Power Trowel
Part#: TPT36H/K & TPT46H/K

6 HP/14HP Kohler & 5.5HP/8.5HP Honda Engines
Adjust trowel blade pitch from 0-28°
60-115 RPM rotor speed for superior concrete finishes
Includes float pan and trowel blades
3 Year Engine Warranty & 1 Year Product Warranty



HONDA
ENGINES

8" Gas Powered Concrete Scarifier
Part#: TSCAR8H

5.5 HP Honda GX160 Engine
Remove traffic lines at 800 - 1,000 linear ft/hr
Tungsten Carbide Blade Kit Available
OSHA approved dust port for silica vacuum removal
3 Year Engine Warranty & 1 Year Product Warranty

HAVE QUESTIONS?

Contact us. **We're here to help!**

Email us at **sales@tomahawk-power.com**



Power Your World

Tomahawk understands to keep a job-site running smoothly the proper equipment and spare parts are needed at the drop of a hat. With same day shipping and faster delivery times, count on Tomahawk to keep you powered throughout the day! With long lasting parts and engines, Tomahawk equipment will be the star of your fleet for years to come. Visit www.tomahawk-power.com to get started today!

TOMAHAWK

TOMAHAWK®, LLC
San Diego, CA

Sales Support

(866) 577-4476
sales@tomahawk-power.com

Equipment Support

(866) 577-4476
support@tomahawk-power.com

www.tomahawk-power.com



FACEBOOK

facebook.com/TomahawkPowerUSA

YOUTUBE

youtube.com/TomahawkPower

INSTAGRAM

[@tomahawkpower](https://instagram.com/tomahawkpower)