



178SSCFT48HC

Refrigerated Salad Bar / Cold Food Tables

Models: _____

#178SSCFT36HC

#178SSCFT48HC

#178SSCFT60HC

#178SSCFT72HC

Note:

Please read the manual thoroughly prior to equipment setup, operation, and maintenance.

Table of Contents

Model Variations.....	2
Warnings.....	3
Installation.....	4
Cabinet Location Guidelines.....	4
Electrical.....	5
Adjusting the Temperature.....	5
Defrost System.....	6
Running a Manual Defrost.....	6
Loading Product.....	6
Loading Food Pans.....	6
Safety / Warning.....	7
Food Pan Layouts.....	8
Troubleshooting.....	9

Model Variations

Base Unit	Optional Models
178SSCFT36HC	178SSCFT36K
178SSCFT48HC	178SSCFT36K
178SSCFT60HC	178SSCFT36K
178SSCFT72HC	178SSCFT36K

Warnings

DANGER – RISK OF FIRE OR EXPLOSION. FLAMMABLE REFRIGERANT USED. TO BE REPAIRED ONLY BY TRAINED SERVICE PERSONNEL. DO NOT PUNCTURE REFRIGERANT TUBING.

PELIGRO – RIESGO DE INCENDIO O EXPLOSION. REFRIGERANTE INFLAMABLE UTILIZADO. PARA SER REPARADO SOLAMENTE POR PERSONAL DE SERVICIO CALIFICADO. NO PINCHAR LA TUBERÍA REFRIGERANTE.

DANGER – RISQUE DE FEU OU D'EXPLOSION. LE FRIGORIGÈNE EST INFLAMMABLE. CONFIER LES RÉPARATIONS À UN TECHNICIEN SPÉCIALISÉ. NE PAS PERFORER LA TUBULURE CONTENANT LE FRIGORIGÈNE.

CAUTION – RISK OF FIRE OR EXPLOSION. FLAMMABLE REFRIGERANT USED. CONSULT REPAIR MANUAL/ OWNER'S GUIDE BEFORE ATTEMPTING TO SERVICE THIS PRODUCT. ALL SAFETY PRECAUTIONS MUST BE FOLLOWED.

ATENCION – RIESGO DE INCENDIO O EXPLOSIÓN. REFRIGERANTE INFLAMABLE UTILIZADO. CONSULTE EL MANUAL DE REPARACIÓN / GUÍA DEL PROPIETARIO ANTES DE INTENTAR DAR SERVICIO A ESTE PRODUCTO. DEBEN CUMPLIR CON TODAS LAS PRECAUCIONES DE SEGURIDAD.

ATTENTION – RISQUE DE FEU OU D'EXPLOSION. LE FRIGORIGÈNE EST INFLAMMABLE. CONSULTER LE MANUEL DU PROPRIÉTAIRE/GUIDE DE RÉPARATION AVANT DE TENTER UNE RÉPARATION. TOUTES LE MESURES DE SÉCURITÉ DOIVENT ÊTRE RESPECTÉES.

CAUTION – RISK OF FIRE OR EXPLOSION DUE TO PUNCTURE OF REFRIGERANT TUBING; FOLLOW HANDLING INSTRUCTIONS CAREFULLY. FLAMMABLE REFRIGERANT USED.

ATENCION – RIESGO DE INCENDIO O EXPLOSIÓN DEBIDO A LA PERFORACION DE LA TUBERÍA REFRIGERANTE; SIGA LAS INSTRUCCIONES DE MANIPULACIÓN CON CUIDADO. REFRIGERANTE INFLAMABLE UTILIZADO.

ATTENTION – RISQUE DE FEU OU D'EXPLOSION SI LA TUBULURE CONTENANT LE FRIGORIGÈNE EST PERFORÉE; SUIVRE LES INSTRUCTIONS DE MANUTENTION AVEC SOIN. LE FRIGORIGÈNE EST INFLAMMABLE.

CAUTION – RISK OF FIRE OR EXPLOSION DUE TO FLAMMABLE REFRIGERANT USED. FOLLOW HANDLING INSTRUCTIONS CAREFULLY IN COMPLIANCE WITH LOCAL GOVERNMENT REGULATIONS.

ATENCION – RIESGO DE INCENDIO O EXPLOSIÓN DEBIDO A REFRIGERANTE INFLAMABLE UTILIZADO. SIGA LAS INSTRUCCIONES DE MANIPULACIÓN CON CUIDADO CONFORME A LAS REGLAS DE LA MUNICIPALIDAD.

ATTENTION – RISQUE DE FEU OU D'EXPLOSION SI LE FRIGORIGÈNE EST INFLAMMABLE. SUIVRE LES INSTRUCTIONS DE MANUTENTION AVEC SOIN CONFORMÉMENT AUX RÈGLEMENTATION GOUVERNEMENTALE LOCAUX.

Installation

Please read this manual thoroughly prior to equipment setup, operation, and maintenance.

This unit is intended for use in a temperature-controlled environment less than 75 degrees Fahrenheit and 60% relative humidity.

IMPORTANT – Please Read Before Installation:

- If the shelf has a raised lip, the lip needs to be installed facing up towards the rear of the cabinet to promote proper air flow. Failure to install the shelves properly is considered user-error and is not covered by warranty.
- If the unit has recently been transported on its side, please let unit stand upright for a minimum of 24 hours before plugging it in.
- Make sure that the unit drops down to desired temperature before loading the unit with product.
- Make sure that there is proper ventilation around the unit in the area where it will operate.
- Make sure all accessories are installed (i.e. shelves, shelf clips, casters) before plugging the unit in.
- Please read through the manual in its entirety.

Cabinet Location Guidelines

- Install the unit on strong and leveled surfaces.
 - If the surface is uneven, the unit may be noisy.
 - The unit may malfunction if the surface is uneven.
- Install the unit in an indoor, well-ventilated area.
 - For best performance, please maintain clearance of 6" on the back of the unit.
 - Brackets should be attached on the back of the unit.
 - Do not use outdoors. For indoor use only.
 - Avoid direct sunlight.
- Avoid installation in a high humidity and/or dusty area.
 - Humidity above 60% can cause the unit to rust, collect condensation, and may decrease efficiency.
 - Dust collected on the condenser coil will cause the unit to malfunction.
- Select a location away from heat and moisture-generating equipment.
 - Ambient temperatures above 75 degrees Fahrenheit may cause the compressor to malfunction.
 - For optimal performance, this unit should not be used in environments with ambient temperatures exceeding 75 degrees Fahrenheit.
 - The unit should not be placed in areas with an ambient temperature over 90 degrees Fahrenheit.
 - Equipment malfunctions due to ambient temperatures above 90 degrees could void the warranty.
 - Do not install this unit inside a closet or alcove.

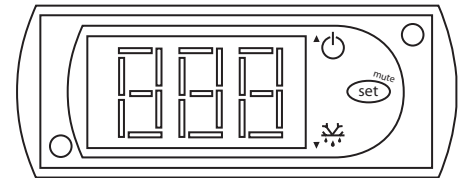
Electrical

- Please ensure that the required voltage is being supplied at all times.
- The unit should be plugged into a grounded and properly-sized electrical outlet with appropriate over-current protection. **NEVER USE AN ADAPTER PLUG!** Please refer to the electrical requirements on the unit's nameplate.
- This unit should have its own dedicated outlet.
- Do not use extension cords.
- Ensure the unit is not resting on or against the electrical cord.
- If the unit is not in use for a long period of time, please unplug the unit from the outlet.
- To avoid shock and fire hazards, do not plug in or unplug the unit with wet hands.
- After unplugging the unit, wait at least 10 minutes before plugging it back in. Failure to do so could cause damage to the compressor.

Adjusting the Temperature

Your new refrigerator is already factory-set to run at optimum temperatures for food safety and should require no adjustments.

Refrigeration Control



Refrigerators are set to cycle between a minimum temperature of 33 degrees Fahrenheit and a maximum temperature of 40 degrees Fahrenheit.

Adjusting the temperature changes the minimum temperature your unit will run at. Your unit will not run constantly at this setting. To change it, follow these instructions:

Digital Control Units

- Hold "SET" for 1 sec. The display will flash the current minimum temperature.
- Use the arrow buttons to adjust the minimum temperature you want it to run at.
- Press "SET" again to save your settings.

Always remember to calculate the differential if you change the minimum temperature setting. The cabinet temperature will fluctuate up to +7 degrees over your set minimum temperature as the compressor runs and shuts off. Setting the temperature too high will result in unsafe maximum temperatures and possible health code violations.

Defrost System

Refrigerator coils are kept below the freezing point (32 degrees Fahrenheit). During compressor downtime, the evaporator fan continues to circulate air through the evaporator coil. This air circulation raises the coil temperature above the freezing point, melting any accumulated frost. Run-off water is drained into the evaporator pan and evaporated. Automatic defrost timers automatically initiate at pre-set intervals and for a pre-determined duration.

Running a Manual Defrost Cycle

This unit is pre-programmed to run automatic defrost cycles at preset intervals. However, if you would like to run a manual defrost cycle at any time, please follow the steps below:

Refrigerators: Press the defrost button (snowflake symbol and down arrow) for approximately 3 seconds. Repeat to stop the defrost cycle.

Loading Product

Before loading shelves, please be sure that all shelf clips are completely fastened in their correct locations. It is important that all shelves rest completely level before stocking your cabinet with product.

In order to maintain correct air flow inside the unit, please be sure to leave 2-4 inches of space between the back wall and stored product. Blocking the evaporator fans will result in a warmer cabinet temperature, and ultimately compressor failure.

Loading Food Pans

Cold food tables are designed to function with all pans in place, even if some pans are to be left empty. For maximum food freshness, fill the pans only with an amount that can be used in a specific usage period. During non-use, please close the insulated lid cover.

Safety / Warning

Please pay close attention to the safety notices in this section. Disregarding these notices may lead to serious injury and/or damage to the unit.

ATTENTION

- To minimize shock and fire hazards, be sure not to overload outlet. Please designate one outlet for your unit.
- Do not use extension cords.
- Do not put your hands under the unit while it is being moved.
- When the unit is not in use for a long period of time, please unplug the unit from the outlet.
- After unplugging the unit, wait at least 10 minutes before plugging it back in. Failure to do so could cause damage to the compressor.

UNPLUG CORD

- To minimize shock and fire hazards, please do not plug or unplug the cord with wet hands.
- During maintenance and cleaning, please unplug the unit.

PROPER GROUNDING REQUIRED

- To minimize shock and fire hazards, make sure that the unit is properly grounded.

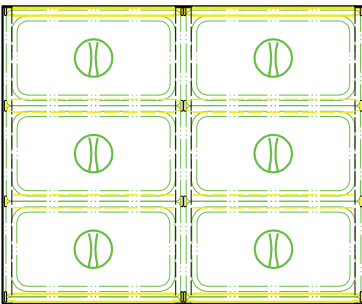
WARNING

- Do not attempt to remove or repair any component unless instructed by factory.
- Make sure that the unit is not resting on or against the electrical cord and plug.
- To minimize personal injury, do not hang on the doors.
- Do not store any flammable and explosive gas or liquids inside the unit.
- Do not attempt to alter or tamper with the electrical cord.

Food Pan Layouts

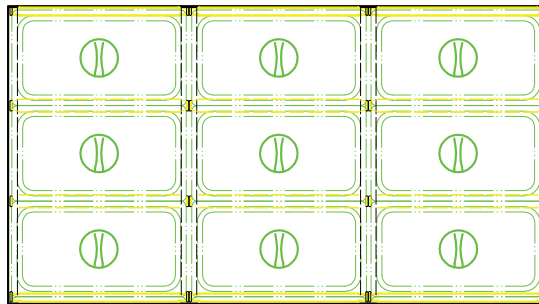
178SSCFT36HC
(6) 1/3 Size, (12) 1/6 Size

36"



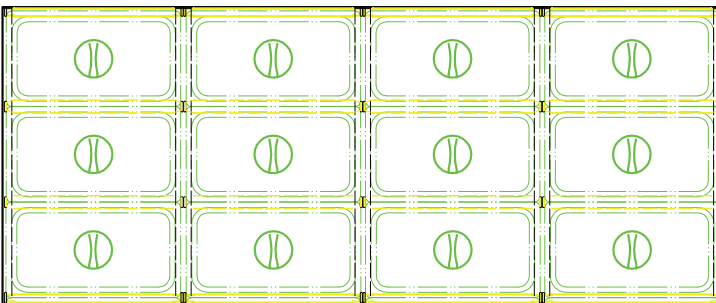
178SSCFT48HC
(9) 1/3 Size, (18) 1/6 Size

48"



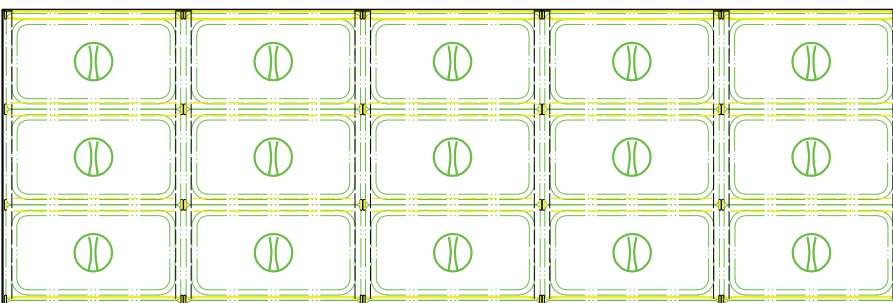
178SSCFT60HC
(12) 1/3 Size, (24) 1/6 Size

60"



178SSCFT72HC
(15) 1/3 Size, (30) 1/6 Size

72"



Troubleshooting

Problem	Possible Cause	Possible Solution
Compressor not running.	Fuse blown or circuit breaker tripped.	Replace fuse or reset circuit breaker.
	Power cord unplugged.	Plug in power cord.
	Thermostat set too high.	Set thermostat to lower temperature.
	Cabinet in defrost cycle.	Wait for defrost cycle to finish.
Condensing units run for long periods of time.	Excessive amount of water product in cabinet.	Allow adequate time for product to cool down.
	Prolonged door opening or door ajar.	Ensure doors are closed when not in use. Avoid opening the doors for long periods of time.
	Door gasket(s) not sealing properly.	Ensure gasket(s) are snapped in completely. Remove gasket and wash with soap and water. Check condition of gasket and replace if necessary.
	Dirty condenser coil.	Clean the condenser coil.
	Evaporator coil iced over.	Unplug unit and allow coil to defrost. Make sure thermostat is not set too cold. Ensure that door gasket(s) are sealing properly.
Cabinet temperature is too warm.	Thermostat set too warm.	Set thermostat to lower temperature.
	Airflow blocked.	Re-arrange product to allow for proper air flow. Make sure there is at least 4" of clearance from evaporator.
	Excessive amount of warm product placed in cabinet.	Allow adequate time for product to cool down.
	Fuse blown or circuit breaker tripped.	Replace fuse or reset circuit breaker.
	Dirty condenser coil.	Clean the condenser coil.
	Evaporator coil iced over.	Ensure doors are closed when not in use. Avoid opening doors for long periods of time.
Condensation is collecting on the cabinet and/or floor.	Relative humidity is above 60%.	Move unit to area below relative humidity or lower humidity level.