

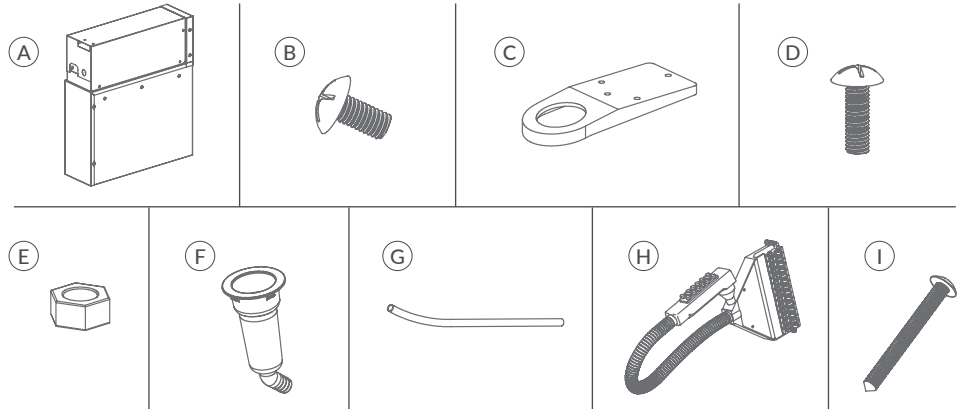
Soda Guns

Assembly Instructions

NOTE: Only parts A and B are included with the soda gun holder. All other parts are included with the soda gun.

PARTS:

- (A) (1) Soda Gun Holder
- (B) (6) Pre-Mounted M6x12 Screws
- (C) (1) Drip Cup Holder
- (D) (2) M5x16 Screws
- (E) (2) M5 Nuts
- (F) (1) Drip Cup
- (G) (1) Drip Cup Hose
- (H) (1) Soda Gun
- (I) (2) Soda Gun Mounting Screws



Assembly Instructions

1. Remove the six pre-mounted M6x12 screws (B) from the soda gun holder (A). Keep these screws for future use.
 2. Pull the top panel off of the soda gun holder (A). Insert the drip cup holder (C) into the slot in the top panel. Secure using the two M5x16 screws (D) and M4 nuts (E).
 3. Insert the drip cup (F) into the drip cup holder (C) and attach the drip cup hose (G) to the bottom of the drip cup.
 4. Attach the soda gun (H) to the soda gun holder (A) by lining up the mounting holes as shown. Secure using the two soda gun mounting screws (I).
- Note:** Line up the mounting holes in the soda gun to the compatible holes in the soda gun holder.
5. Reattach the soda gun top panel to the soda gun holder (A) using the six M6x12 screws (B).
 6. Assembly complete.

