

PROCEDURE FOR INSTALLING OPOS DRIVERS FOR SCANMATIC SERIES: INSTRUCTION

REQUIREMENTS

- Scanner + RS-232/USB Cable
- PC + MS-Windows + RS232/USB Port
- File: OPOS CCOs.msi
- Register File: CTBarcodeScannerSOREgistry.exe
- Demo File: CTBarcodeScannerOPOSDemo.exe

PROCEDURE

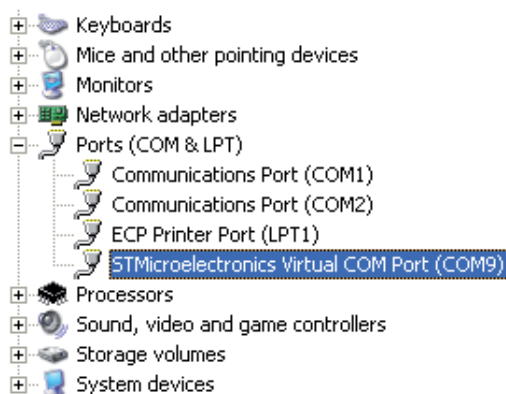
1. Check COM Port Number

- Connect the scanner on PC.

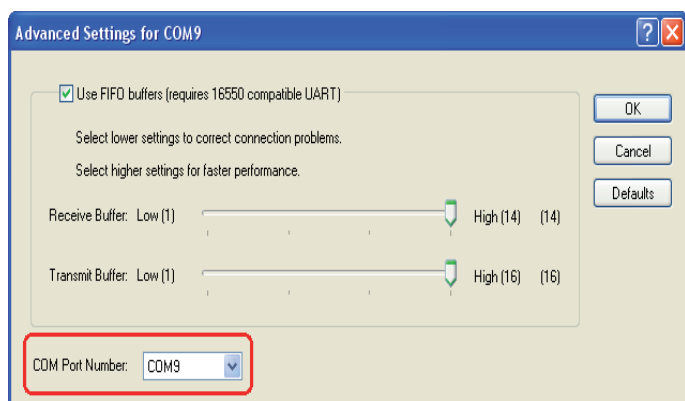
- Check the COM Port Number:

For RS232, ensure the connected COM Port number.

For Virtual COM, open "Device Manager" and check the allocated COM Port number. In the case below, the COM Port number is allocated at 9.



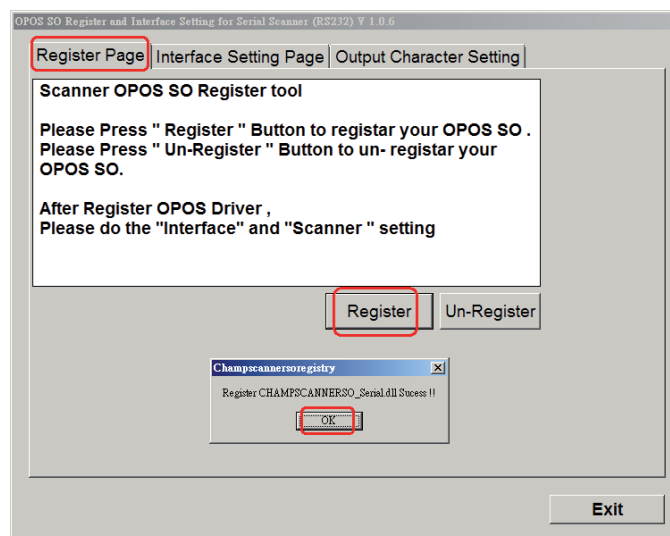
The available COM Port number should be at COM1~COM9. If the allocated COM Port number is greater than 9, change it within 9. Right-click on "STMicroelectronics Virtual COM Port (COM)". Click: Properties -> Port Settings -> Advanced -> COM Port Number. Select a COM Port Number within 9.



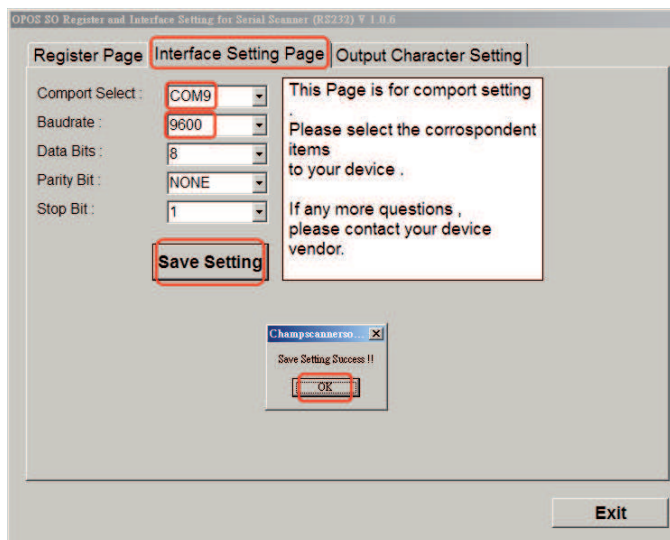
- Remove the scanner power and connect again to initial settings.

2. Install Driver

- Double-click "OPOS_CCOs.msi" and follow the wizard to finish the installation.
- Right-click "CTBarcodeScannerSOREgistry.exe" and execute with administrator privilege.
- On "Register Page", click "Register" to register scanner.
- When register successfully, click "OK".



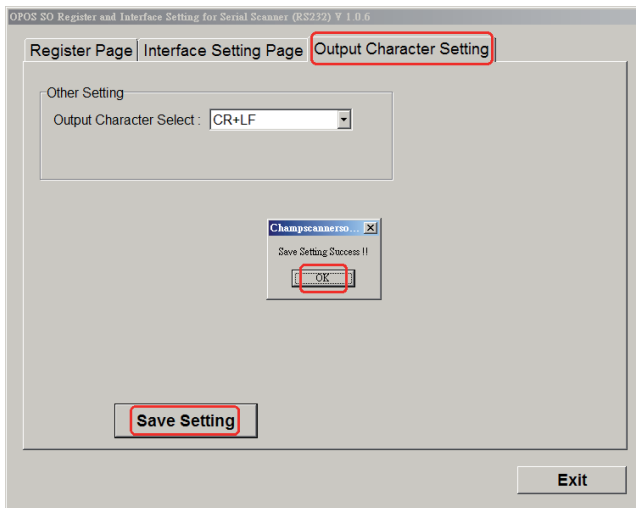
- On "Interface Setting Page", select corresponding COM Port.
- SM100 - SM200 - SM410 - SM420 - SM425 - SM600 set Baudrate at "115200" by default.
- Click "Save Setting" to save the settings.
- When save successfully, click "OK".



- On "Output Character Setting Page", select proper settings. Click "Save Setting" to save the settings.

3. Test Output

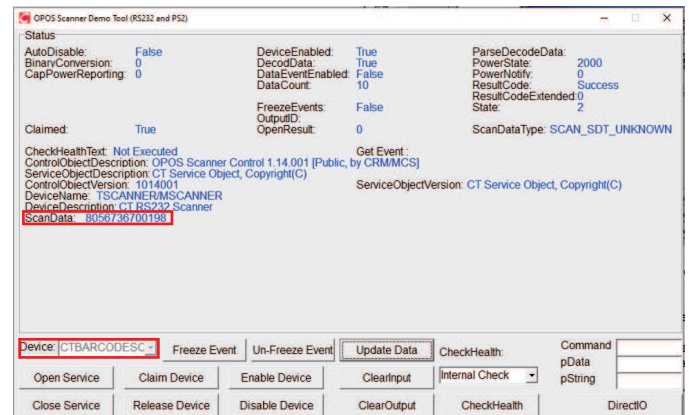
- When save successfully, click "OK".



- Click "Exit" to exit the program.

- Click "CTBarcodeScannerOPOSDemo.exe" to execute the test program.

- In "Device", select "CTBARCODESCANNER" for scanner.



- Connect scanner, click: Open Service -> Claim Device -> Enable Device

- Test output:
 - Take scanner and scan a barcode. Click "Update Data" to output data.
 - The scanned barcode is shown at "ScanData".
 - Click "CleanInput" to clean scanned data. Then scan another barcode and repeat the steps above to test another output if needed.

- Disconnect scanner, click: "Close Service" to release scanner.