

# Installation Checklist

This checklist is designed to help ensure station readiness and to provide examples of images we will need prior to scheduling an installation. Once completed please forward the applicable images.

## Water



1/2 inch cold water supply line with shut off valve within 5' of unit, preferably fitted with a 3/8" FPT fitting

Please also have your contractor install backflow prevention device in accordance with local plumbing code.

## Helpful



## Not Helpful



# Installation Checklist

Continued

## Power



Power supply requirements vary based on the unit being installed. Please refer to the equipment spec sheet for the specific needs of your unit(s).

\*\*Most 220V outlets have their configuration type molded onto the outlet. Having the capability to zoom in close enough to **clearly identify the receptacle type is key.**\*\*

### Helpful



### Not Helpful



# Installation Checklist

Continued

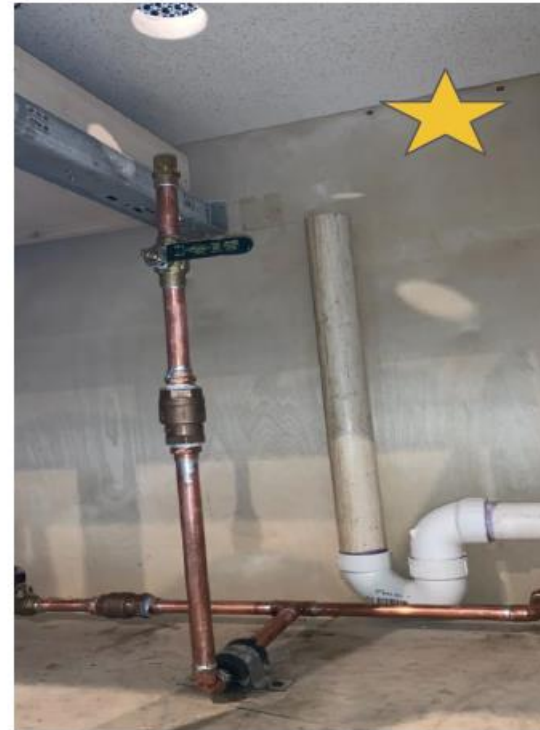
## Drain



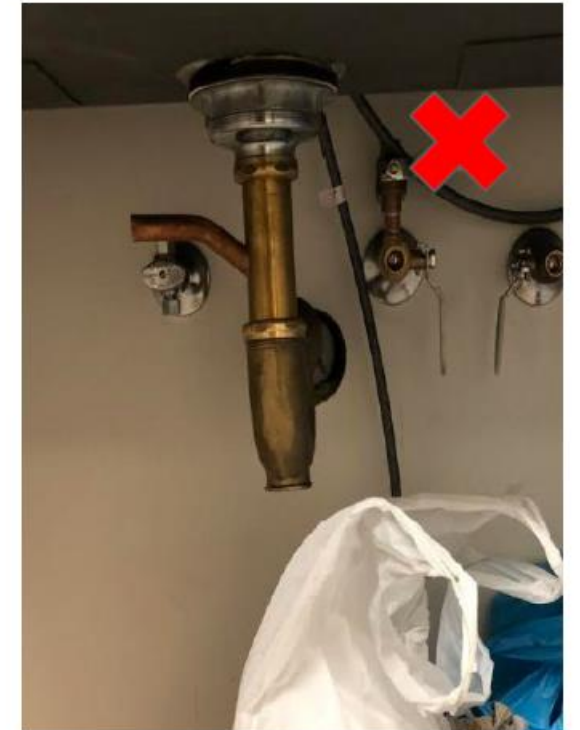
ESPRESSO MACHINES ONLY.

Clear path for 1 inch flexible drain line to the indirect drain with negative pitch, no more than 5 feet from the unit.

**Helpful**



**Not Helpful**



# Installation Checklist

Continued

The  
entire  
space



Images showing the overall espresso station layout are important to identify needs other than power and water. They help identify the need for access holes to be made by your contractor for the power cords, water lines, and drain tubes. They also help to identify locations for water filtration or coffee grinders.

Helpful



Not Helpful

