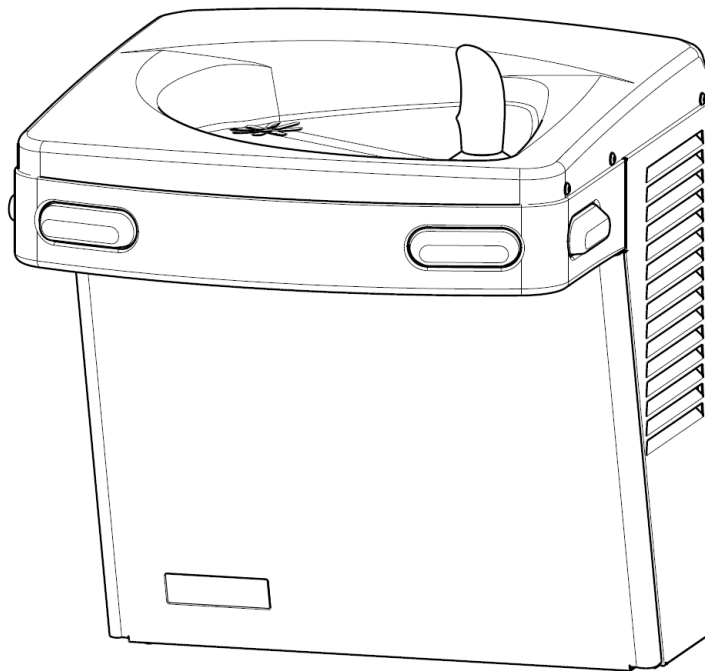


# Installation Manual

## PGAC, PG8AC

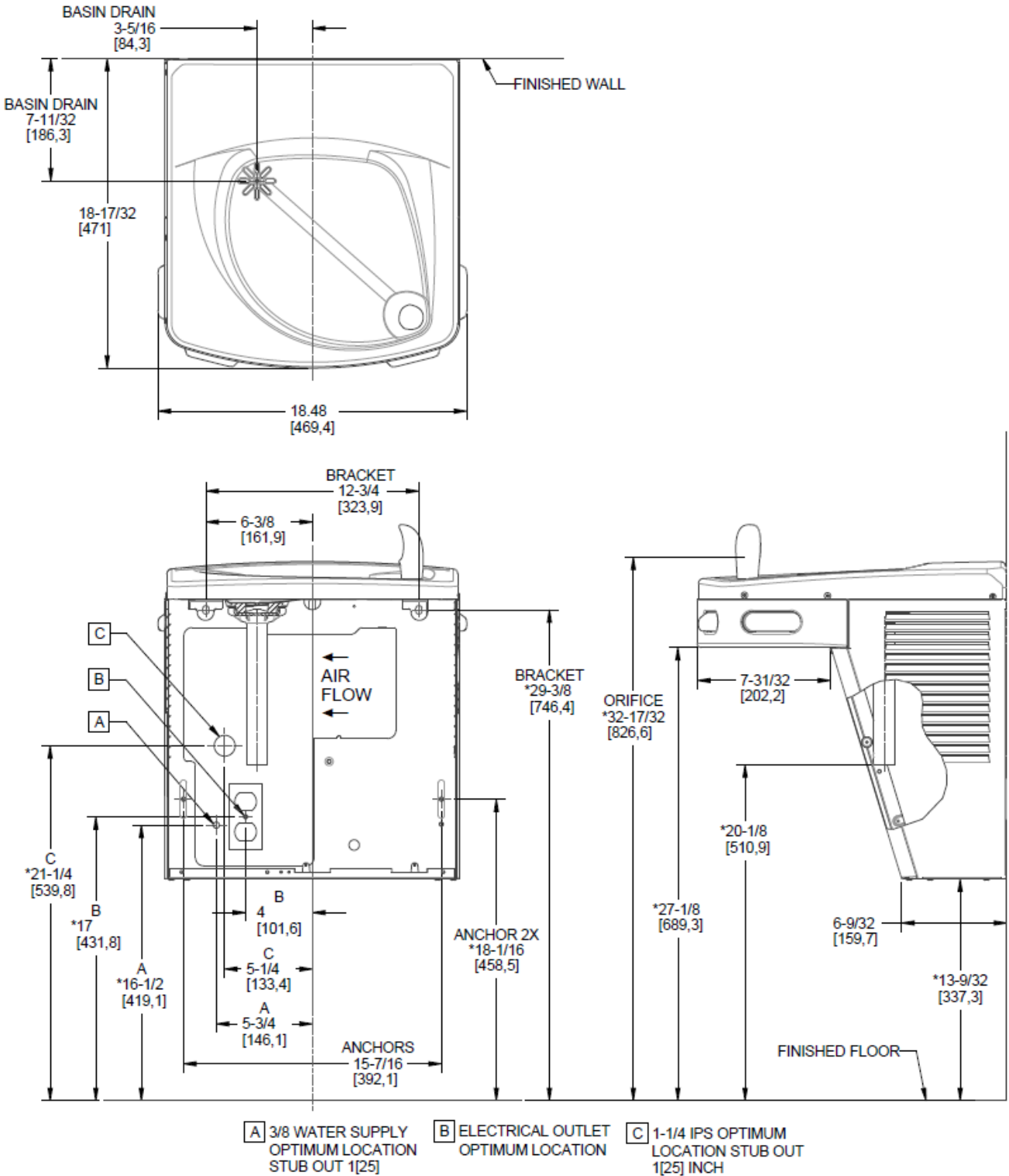
---

- **Preparation**
- **Inspection**
- **Installation**
- **Maintenance**



222 East Campus View Blvd.  
Columbus, OH 43235  
614-861-1350  
[www.oasiscoolers.com](http://www.oasiscoolers.com)

# Rough-In Diagram



# Preparation

---

## What's Included:

- Fountain Unit
- 3/8" OD copper water inlet tube
- Hanger Bracket

## Not Included:

- 4x appropriate wall anchors
- 1 1/4" P-Trap
- Water shut-off valve

## Recommended Tools:

- Pilot drill bit (for chosen wall anchors)
- Slotted screwdriver
- T15 Torx bit driver
- Power drill (suitable for wall anchors)
- Bubble level
- Tape measure

## Inspection:

1. Inspect the carton and water cooler for evidence of rough handling and concealed damage. Damage claims should be filed with the carrier.
2. This drinking water cooler is designed to be operated at a water supply line pressure of up to 100 psi (690 kPa). A pressure regulator must be installed in front of the unit's water inlet if the water pressure (including any possible pressure spikes) could exceed 100 psi (690 kPa).
3. This drinking water cooler is intended to be connected to a 20A minimum ground fault circuit interrupting (GFCI) device to meet UL requirements.

**If there is no shipping damage, please proceed to the  
Installation portion of the manual.**

---

## Note:

The following states require a licensed plumber to install cooler; AR, GA, MA, MI, OK, RI, SC, SD, TX, VT and WI. CA, KS, MN, NM and OR allow for a state-registered installer or contractor as well. State and local plumbing codes may prohibit the use of saddle tapping valves for water line connection in some applications. All connections must conform to applicable plumbing codes.

## **WARNING**

The warranty and the Underwriters Laboratory Listing for this machine are automatically voided if this machine is altered, modified, or combined with any other machine or device. Alteration or modification of this machine may cause serious flooding and/or hazardous electrical shock or fire.

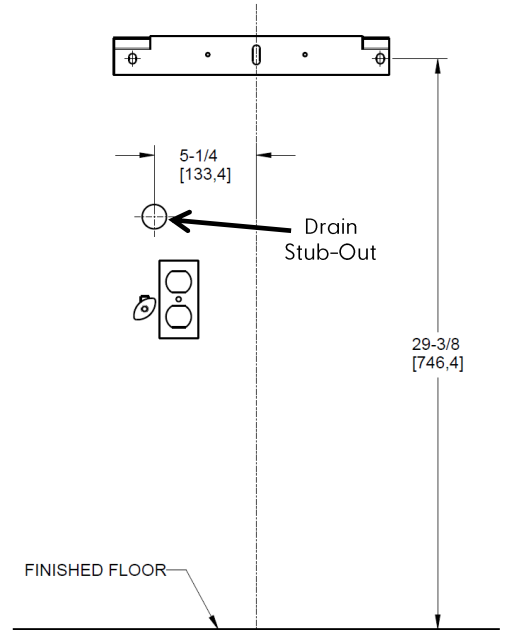
EXCEPT AS SET FORTH HEREIN, THE MANUFACTURER MAKES NO OTHER WARRANTY, GUARANTEE OR AGREEMENT EXPRESSED, IMPLIED OR STATUTORY, INCLUDING ANY IMPLIED WARRANTY OR MERCHANTABILITY OR FITNESS FOR A PARTICULAR PURPOSE.

# Installation

1. Install the hanger bracket (see **Figure 1.**) that came attached to the fountain unit frame with 2x of your appropriate anchors for the installation location (not provided).

2. FLUSH BUILDING WATER SUPPLY LINE BEFORE INSTALLING THE UNIT. Failure to do so will result in the in-line strainer at the cartridge inlet being clogged and a resulting loss in water pressure and/or damage to the cartridge.

3. Hang the fountain unit on the installed wall bracket. **ENSURE THE UNIT IS HUNG ON THE GALVANIZED STEEL FRAME AND NOT UNDER THE RETURN EDGE OF THE STAINLESS STEEL BASIN TOP. (See Figure 2.)**
4. Remove the front panel by loosening the two front T15 screws at the base of the unit and by removing the two T15 screws at the top of the panel under the fountain nose.



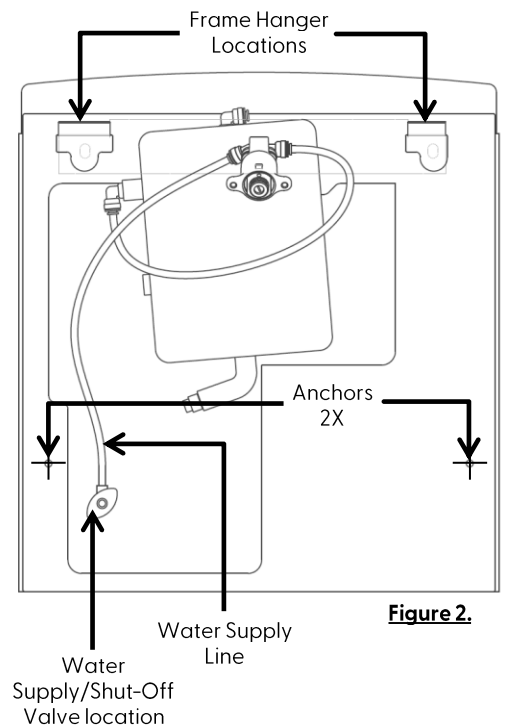
**Figure 1.**

5. Install 2x of your chosen wall anchors into the lower two locations called out in **Figure 2.**

Mark the hole locations then, remove the unit to drill the pilot holes. Reinstall the unit and secure with your wall anchors.

6. Install a P-Trap (not provided) to the waste line stub-out and the basin drainpipe. Cut the basin drainpipe as needed.
7. Connect the supplied copper Water Supply tube to the shut-off valve location shown in **Figure 2.**
8. Turn on water supply and fill the tank by activating the dispense buttons on the unit and allow water to flow to the bubbler until you get an uninterrupted stream.

9. Check for any leaks in the water lines and drain.



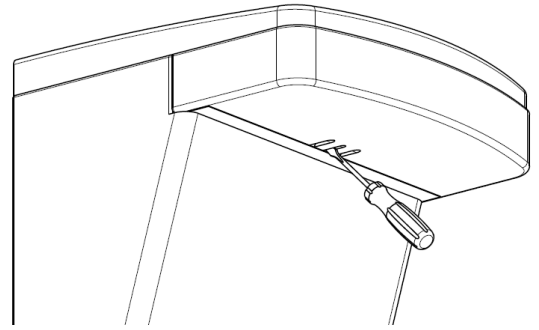
**Figure 2.**

# Installation

---

10. Adjust the bubbler stream height:

- a. Locate the slotted adjustment knob in the center slot beneath the fountain nose. (see **Figure 3.**)
- b. With a slotted screwdriver, rotate the cartridge adjustment knob clockwise to increase the stream height and counterclockwise to reduce it. While dispensing water, make adjustments until the stream height is a minimum of 4" per ADA requirement.



**Figure 3.**

11. Before powering on the unit, rotate the condenser fan blade by hand to ensure that it is free of obstructions.
12. Plug power supply cord into wall outlet.

**Note:** For an outlet that is external to the unit frame, route the power cord through the rear most 1-1/3" knock-out at the base of the unit frame. Ensure the hole is free of any burrs. The use of a Heyco bushing #2184 is recommended.

13. Reinstall the front panel previously removed in step 4.

---

## INSTALLATION COMPLETE

---

**MAINTENANCE:** The only maintenance operation required is the removal of dirt and lint from the condenser where used. Inspection should be made at 3-month intervals. To access, remove the front panel as described in step 4. To remove the side panel, remove the two screws on the bottom of the unit and loosen (but do not remove) the two rear screws on the stainless-steel basin.

Disconnect the power supply cord and then clean the condenser with a small stiff non-wire or vacuum cleaner attachment brush when required. Observance of this procedure will ensure adequate air circulation through the condenser so operation is efficient and economical.

**CLEANING:** The outside of the unit can be wiped clean with a mild soap and water mixture. Never use harsh chemicals or abrasive cleaners, including any chlorine solutions. Rinse thoroughly with clean water, then dry surfaces.

**OVERLOAD PROTECTION:** The compressor motor, where used, is equipped with an automatic reset protector which will disconnect the motor from the line in case of an overload.

**LUBRICATION:** This unit is equipped with a hermetically sealed compressor and requires no additional lubrication. The fan motor, where used, on this unit seldom needs oiling, but if required, a few drops of SAE 10 oil should be used.