



MAX SEATING™ FOLDING TABLES



MAX SEATING



DESIGN



STRENGTH

MAX SEATING™ LEGS



EASY FOLD



COMPACT STORAGE





MAX SEATING™ FOLDING TABLES



**Patented Structure Enables
Comfortable Seating on All Sides
and Ends of the Table without
any Leg Obstructions.**

Use with our Compact Wood Bench





DINING



SEMINAR



MULTI-PURPOSE



Features



16-Gauge C-Channel Frame



2-Point Welded Leg Brace



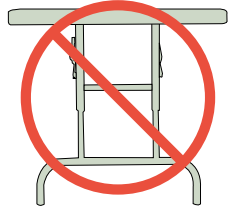
14-Gauge 1.25" Square Leg Tubing Legs



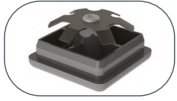
Proprietary Leg Clips Secure Legs When Folded



Auto-Engage Locking Mechanism



**NO WISHBONE LEGS
FOR ZERO OBSTRUCTION
MAX SEATING™ SPACE**



High-Impact, Non-Marring Spring Steel Flower Glides



Folding/Locking Mechanisms Exceeded 7,000 Cycle Tests



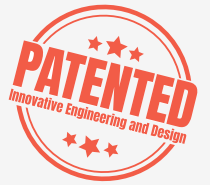
Legs at Table Corners for Max Seating™



Nylon Corners With Standoff for Scratch-Free Stackability



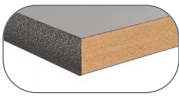
14-Gauge Stability Boost Leg Brackets



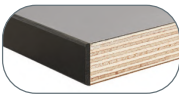
DESIGNED, ENGINEERED & ASSEMBLED IN THE U. S. A.
WITH GLOBAL MATERIALS



Tabletops



MDF with Protect Edge
.75" Core | HPL Surface
Protect Edge (MD PE)



Plywood with 3mm PVC Edge
.75" Core | HPL Surface
3mm Hot-Melt PVC Edge (PW EB)



Plywood with T-Molding
.75" Core | HPL Surface
T-molding (PW TM)



Particleboard with T-Molding
.75" Core | HPL Surface
T-molding (PB TM)



Particleboard with 3mm PVC Edge
.75" Core | HPL Surface
3mm Hot-Melt PVC Edge (PB EB)

Leg Design Options

Use Leg Code MSFE for 30"H Standard Style Legs



29"H | Standard (MSFT)



29"H | Cantilever (MSFTC)

Model Number Configuration

Leg Design | Edge |
MSFT 2448 PW PE GY
Width/Length | Core | Laminate Color

Size (Width/Length in Inches)

*1848	1860	1872	1882	1896
*2448	2460	2472	2482	2496
*3048	3060	3072	3082	3096
*3648	3660	3672	3682	3692
48RD	60RD	72RD	RD= ROUND	

● Available in Cantilever Leg

● Quickship tables available in this size with Plywood core (PW), Black Edge Banding (EB) and Montana Walnut laminate (WT)

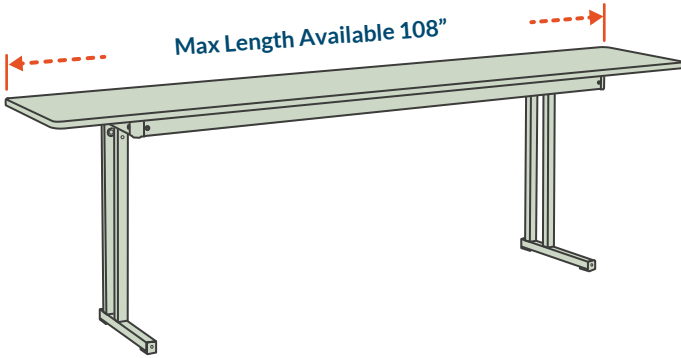
*This size does not fold flat, and cannot be stacked
Standard lead time is 4-6 weeks. Quick ship lead time is 2 days.

See Next Page for Custom Sizes and Recessed Leg Options

Custom Size Tables: _____

Upcharge and extended lead time apply

We can build any length tabletop on the smaller size frame (up to 108" long). We will install it onto the closest smaller size frame (60", 72", 84" & 96" Length).



Model Number Configuration

Custom Length
MSFT 24108 PW PE GY

Recessed Legs: _____

*Available only for rectangle shape | Upcharge and extended lead time apply

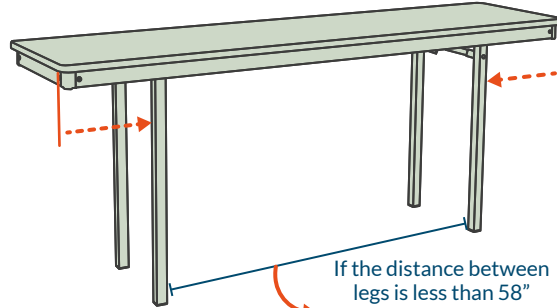
Table legs can be recessed to your ideal placement to help maximize seating space. When recessing legs, only the legs for which a dimension is noted will be recessed. Any non-specified legs will be mounted at the standard placement.

To recess the right leg:

Add **R** followed by distance from the edge of the tabletop at the end of model number (i.e. R12)

To recess the left leg:

Add **L** followed by distance from the edge of the tabletop at the end of model number (i.e. L8)



Model Number Configuration

Right Leg Recessed Distance from Edge
MSFT 2448 PW PE GY R12 L8
Left Leg Recessed Distance from Edge



- Please note:**
- All testing was conducted with standard tabletop and leg configurations. Recessing legs or customizing tabletops may cause table to be susceptible to tipping.
 - Please allow up to 2 inch tolerance.



Standard Edges *No minimum required*



Vinyl T-Molding | Black (TM)



Protect Edge | Black (PE)



3MM PVC Edge Banding | Black (EB)

Premium Edges *Subject to minimum quantity and upcharge*

VINYL T-MOLD



Navy (TN)



Green (TG)



Red (TR)



Brown (TO)



Beige (TB)



Silver (TS)

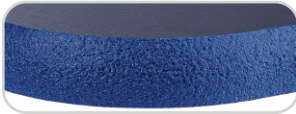


Medium Grey (TE)



Light Grey (TL)

PROTECT EDGE



Navy (PN)



Green (PG)



Red (PR)



Purple (PP)



Beige (PB)



Dark Grey (PD)



Medium Grey (PM)



Light Grey (PL)

3MM PVC
EDGE BANDING



Navy (EN)



Green (EG)



Red (ER)



Purple (EP)



Beige (EE)



Dark Grey (ED)



Medium Grey (EM)



Light Grey (EL)

Custom Logo Options

Upcharge and extended lead times apply



Standard Laminates

No minimum required

						
Robin RN	Port PO	Regimental Red RR	Hollyberry RE	Candy Apple CD	Dragon Fire DF	Orange Grove OG
						
Maroochy Brush MB	Marigold YW	Sprout SU	Island IS	Hunter Green GR	Morrocan MA	Ocean OC
						
Persian Blue BL	Lapis Blue LB	Catalina CI	Indigo IN	Atlantis AT	Brittany Blue BB	Woolamai Brush WO
						
Navy Legacy NL	Concord Grape CG	Black BK	Graphite Nebula GN	Asian Night AN	Rustic Slate RS	Forged Steel FS
						
Figured Mahogany MY	Coffee Bean CB	Montana Walnut WT	Windswept Bronze WZ	Pinnacle Walnut PN	Windsor Mahogany WM	Lowell Ash LA
						
Burnished Chestnut CT	Buka Bark KB	River Cherry RC	Nepal Teak NT	Wild Cherry CH	Fonthill Pear FP	Harvest Maple HM
						
New Age Oak NW	Monticello Maple MP	Bannister Oak OK	Castle Oak CO	Limber Maple LM	Kensington Maple KS	Fusion Maple FM
						
Manitoba Maple MT	Almond Leather AL	Tawny Legacy TL	Natural Almond NA	Desert Zephyr DZ	Natural Tigris NG	Natural Nebula NN
						
Steel Mesh SL	Slate Grey SG	Mystic Night MN	Pewter Brush PB	Windswept Pewter WP	Twilight Zephyr TZ	Boardwalk Oak BD

Standard Laminates

No minimum required



Premium Laminates

Subject to minimum quantity and upcharge



**IF YOU DON'T
SEE A LAMINATE,
JUST ASK!**

Choose any laminates from:

May be subject to minimum quantity and upcharge

