

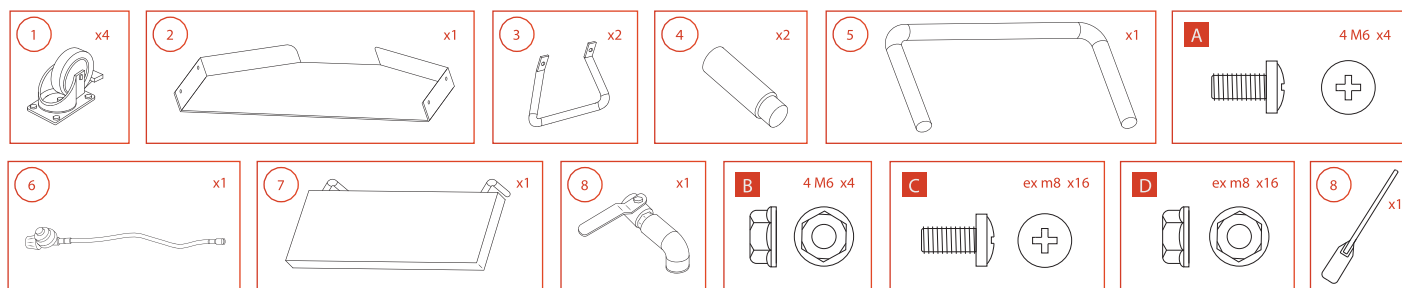
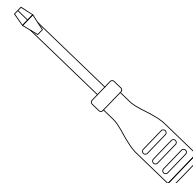
SEAFOOD BOILER INSTRUCTIONS

Please follow the steps below to ensure correct installation of your new Backyard Pro Seafood Boiler.

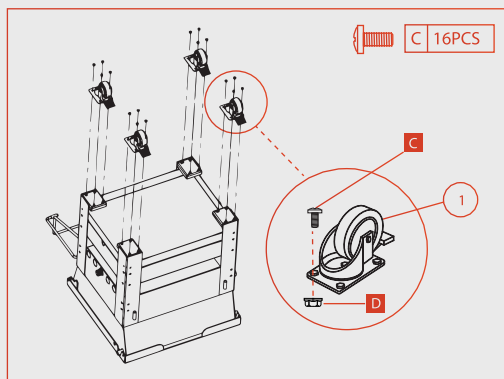
TOOLS NEEDED:

Adjustable
Wrench

Phillips Head
Screw Driver

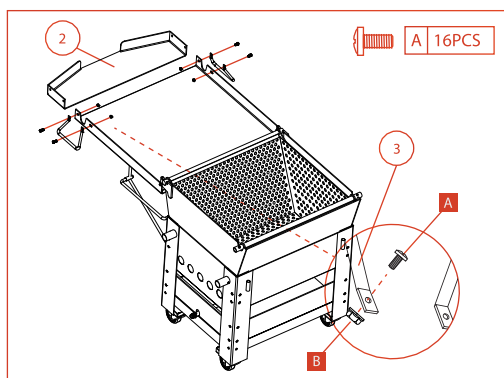


STEP 1



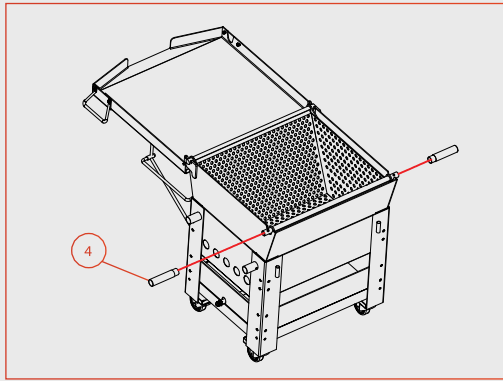
Carefully turn the seafood boiler upside down. Install the wheels to the leg of the frame using 16 M8x16 bolts and 16 M8 nuts as shown in the diagram above. Make sure to tighten the screws.

STEP 2



Carefully turn the seafood boiler right side up so that it is standing on its wheels/legs. Slide the seafood chute onto the lid and install the lid handle using 4 M6x12 bolts and 4 M6 nuts as shown in the diagram above. We recommend to expand the lid support bar on the frame first. This will facilitate assembling the chute and handles. Make sure to tighten the screws.

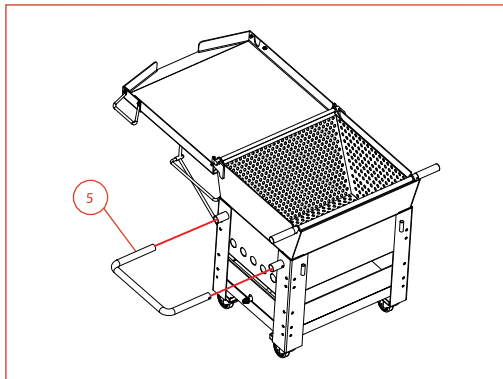
STEP 3



Insert the two basket handles into the basket handle receiver of the basket strainer as shown in the diagram above.

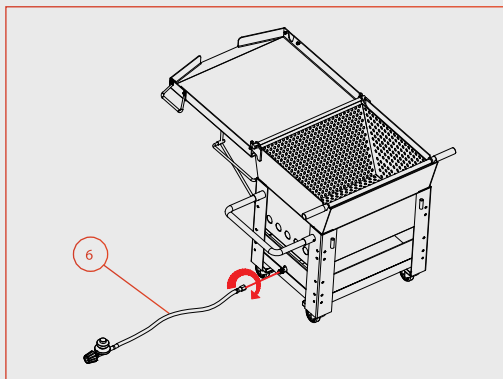
The snap on the handle will lock it in place

STEP 4



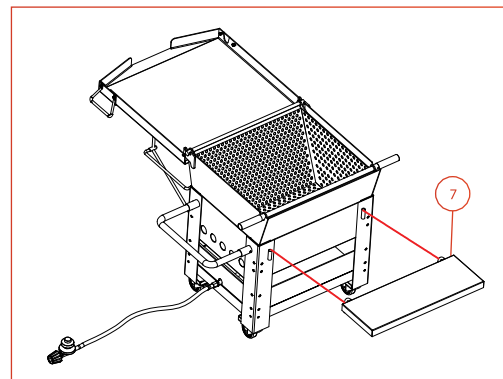
Insert the push-pull handle to the handle receiver of the basket strainer as shown in the diagram above.

STEP 5



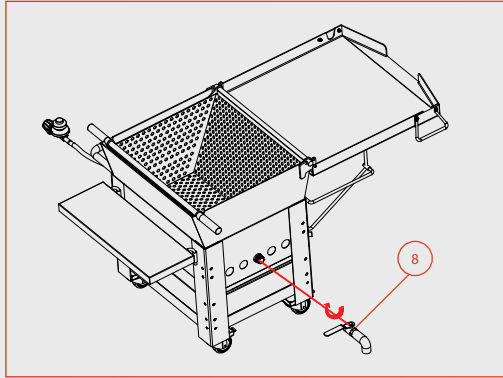
Tighten the connector of the hose to the connector of the jet tube with a wrench as shown in the diagram above. Assure that the hose has been entirely tightened.

STEP 6



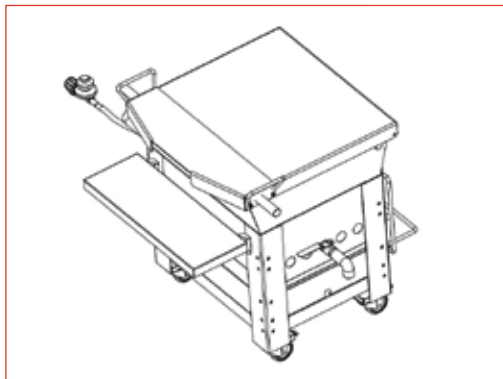
Secure the worktable into the hole of the boiler stand as shown in the diagram.

STEP 7



Fasten the drainage ball valve to the boiler as shown in the diagram above. Assure that the valve is tightened and secured to the boiler.

STEP 8



The seafood boiler is now complete!

LIGHTING INSTRUCTIONS

1. Ensure the gas supply is in the "Off" position, and then slowly turn on.
2. Using a long reach lighter or a match and match holder, light the desired burner with caution.
3. Repeat the previous step from the opposite side to light the second burner.
4. If the burner does not light within 5 seconds, shut off the gas. Wait 5 minutes for the gas to clear and repeat the lighting procedure.
5. When the flame is lit, adjust using the regulator.
6. When finished, turn the gas supply to the "Off" position.