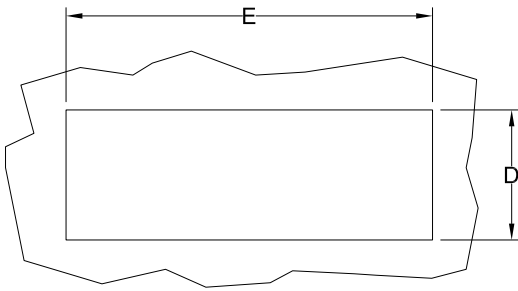


INSTALLATION INSTRUCTIONS

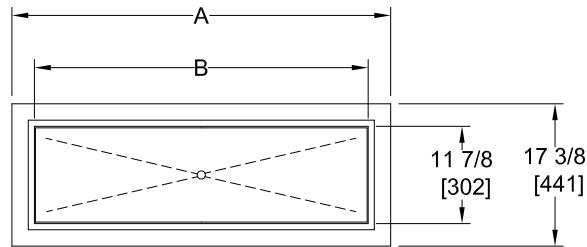
REFRIGERATED COLD PAN
SLIM LINE MODELS
RCP200SL
RCP300SL
RCP400SL

CUTOUT DETAILS

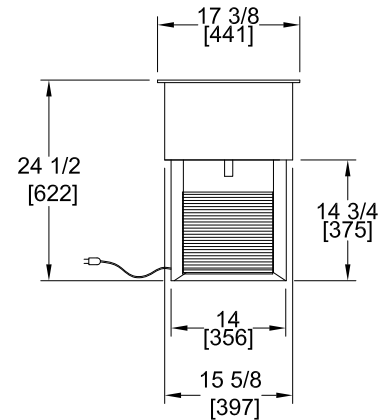
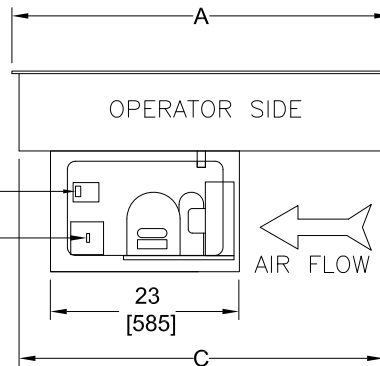


NOTE:
THERE ARE NO CLEARANCE SPECIFICATIONS
FOR THIS UNIT.

PRODUCT DIMENSIONS INCHES
[MM]



ADJUSTABLE TEMPERATURE CONTROL
POWER SWITCH

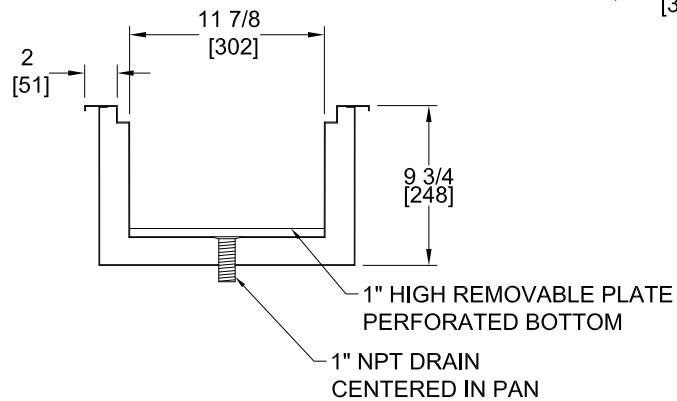


INSTALLER MUST MEET CONDITIONS OF ACCEPTABILITY
OUTLINED BELOW UPON INSTALLATION:

1. This unit may be installed in stainless steel, wood, Formica, or Corian tables and countertops.
2. This unit is shipped completely assembled and requires only a 15 amp dedicated grounded outlet (NEMA 5-15R) and drain connection. Power cord & power switch should be accessible from the front of the unit.
3. When installing the unit, it is essential to provide side openings twice the surface area of the condenser for adequate air circulation. Louvered grills with proper size may be placed in each opening.

TO INSTALL:

1. Lay out "cutout" dimensions on countertop or table.
2. Cut out hole and add stiffeners to support weight of unit if necessary. Countertop must be flat and level before installing cold pan.
3. Apply a generous bead of silicone sealant to underside of mounting flange before setting unit into cutout. Remove any excess sealant from top flange and countertop.
4. Connect 1 inch drain to drain pan or floor drain. Consult local codes for approved drain connections.



CROSS-SECTION OF COLD PAN

MODEL NUMBER	OVERALL DIMENSIONS			CUT-OUT DIMENSIONS		ELECTRICAL AND REFRIGERATION SPECIFICATIONS									
	DIM. A	DIM. B	DIM. C	DIM. D	DIM. E	VOLTS	HP	AMPS SINGLE PHASE			REFRIGERANT		DESIGN PRESSURE		POWER SUPPLY CORD
								LRA	MFS	L1-N	TYPE	QTY	HIGH	LOW	
RCP200SL	46 1/4 [1175]	40 3/4 [1035]	44 1/2 [1130]	15 7/8 [403]	44 3/4 [1137]	115	1/4	38	15	4.9	R134A	28 OZ	440	162	NEMA 5-15P
RCP300SL	67 [1702]	61 1/2 [1562]	65 1/4 [1657]	15 7/8 [403]	65 1/2 [1664]	115	1/3	39	15	5.6	R404A	24 OZ	440	162	NEMA 5-15P
RCP400SL	87 3/4 [2229]	82 1/4 [2089]	86 [2184]	15 7/8 [403]	86 1/4 [2191]	115	1/2	41	15	6.4	R404A	34 OZ	480	175	NEMA 5-15P



WELLS BLOOMFIELD

10 SUNNEN DRIVE, ST. LOUIS MO 63143

2M-Z16965 REV (-)