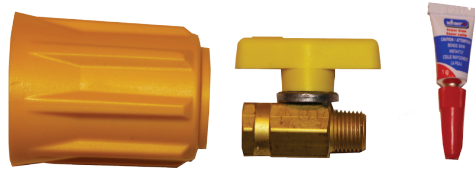


Installation Instructions for Propane Safety Valve



Start by wrapping LPG Tape included around the thread of the valve



Use wrench to remove existing propane coupler



Install Valve onto propane line



Tighten with a wrench



Add glue to coupler and safety grip



Push coupler through safety grip



Install coupler on propane valve with a wrench

Check for leaks with an approved solution



Twist on coupler to propane cylinder and turn on the valve



To change propane cylinder:
Turn off the valve not allowing
any propane in the line to get
through



Then twist off the coupler from
cylinder