

Plastic High Chair

ASSEMBLY INSTRUCTIONS

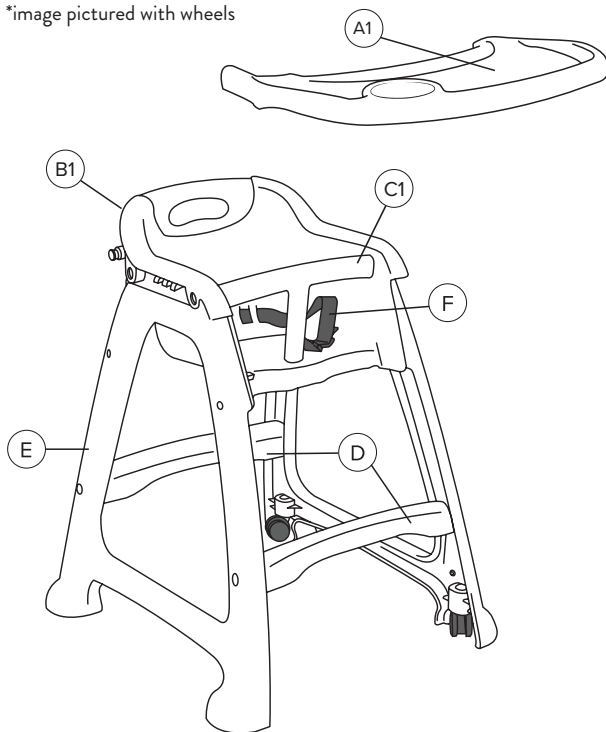


LANCASTER™
TABLE & SEATING

WARNING: REFER TO SAFETY WARNINGS ON PAGE 3 BEFORE ASSEMBLING.

ASSEMBLED DIAGRAM:

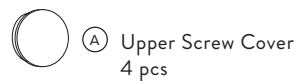
*image pictured with wheels



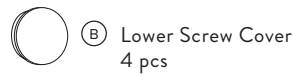
PARTS LIST:

A1	Tray	1
B1	Seat	1
C1	Safety Bar	1
D	Cross Bar	2
E	Chair Leg	2
F	Seat Belt	1

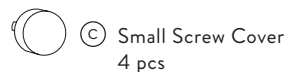
HARDWARE:



A Upper Screw Cover
4 pcs



B Lower Screw Cover
4 pcs



C Small Screw Cover
4 pcs



G Small Screw, 4 pcs



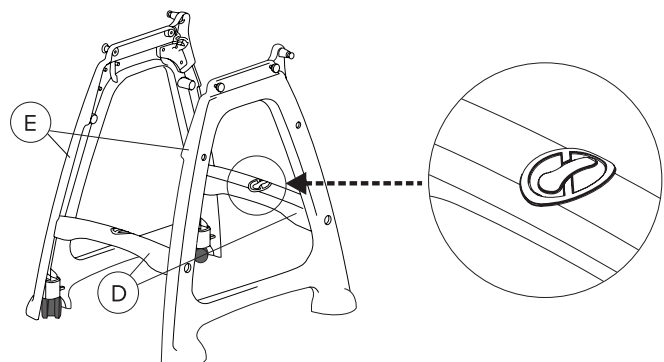
H Large Screw, 4 pcs

NOTES:

1. Inspect all pieces for damage upon receipt and before assembly. Do not assemble or use if any pieces are broken or damaged.
2. Use a Phillips head screwdriver to assemble this chair. Do not use a power drill for assembly.
3. Make sure that the harness is correctly fitted.
4. Keep this chair away from open flames and high heat.

STEP 1

Install the two cross bars (D) on the bottom half of the chair legs (E) to connect pieces. Ensure cross bars are installed correctly with the “not a step” image facing upwards. If it is not flush with legs, flip the bar around. Secure with 4 large screws (H) on each side.



Plastic High Chair

ASSEMBLY INSTRUCTIONS



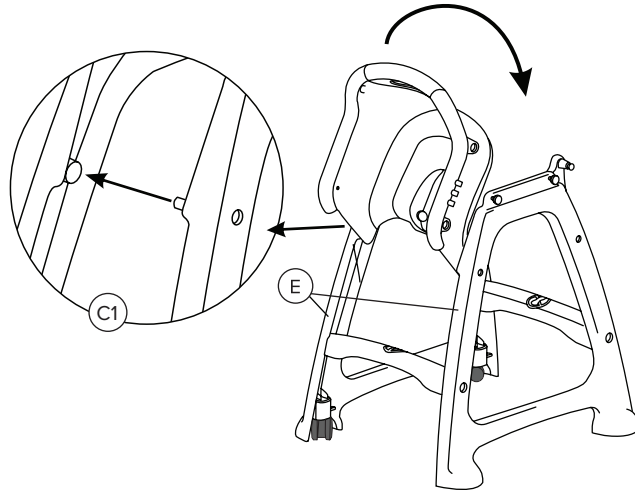
LANCASTER™
TABLE & SEATING

STEP 2

Connect safety bar (C1) into seat (B1) into the three connecting points.

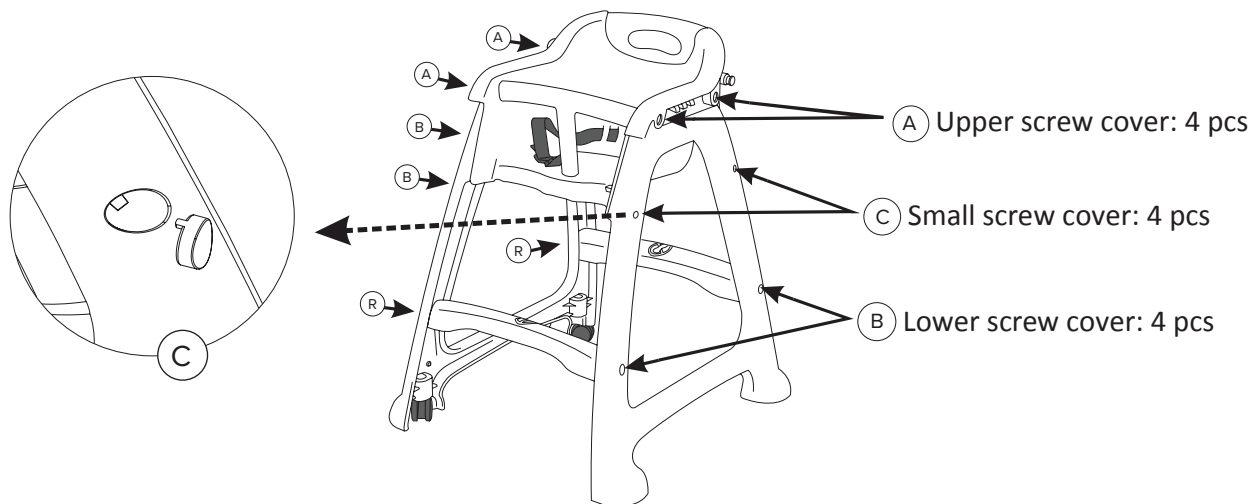
STEP 3

Align the pins on the front of the seat (B1) with the holes on both interior sides of the chair legs (E). Swing the seat back into a horizontal position and use four screws to fasten it. Use the small screws (G) in the front bottom and top holes of the seat.



STEP 4

Press twelve screw covers into the screw holes as shown: place the upper screw covers (A) on the top four holes, the small screw covers (C) on the middle four holes on the chair legs, and the lower screw covers (B) on the bottom four holes of the chair legs. For the covers with notches, ensure that they are aligned with the notch hole in the screw cover opening on the chair.



Plastic High Chair

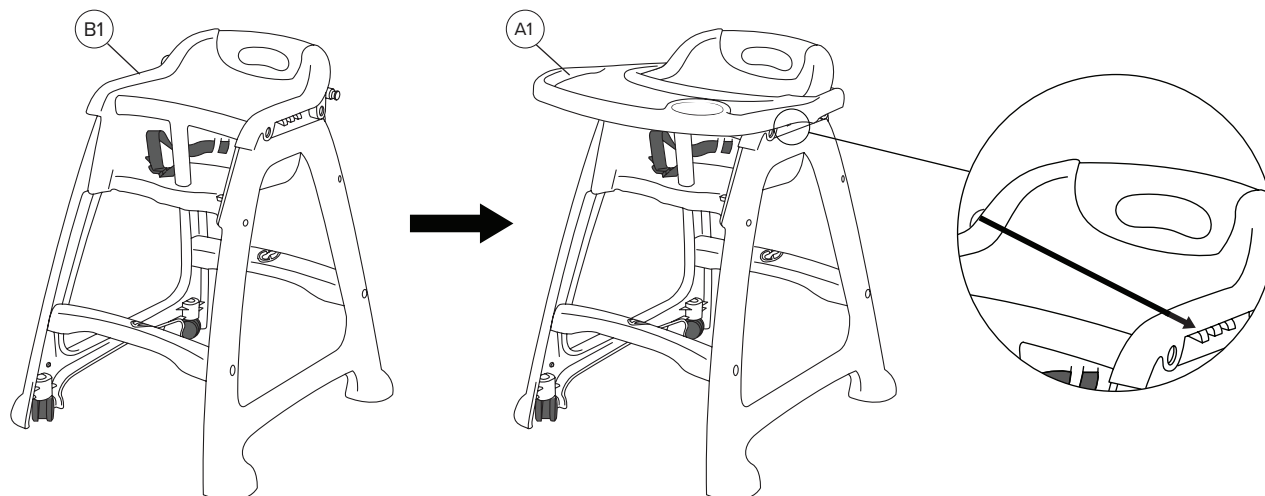
ASSEMBLY INSTRUCTIONS



LANCASTER™
TABLE & SEATING

STEP 5

Align two holes in the sides of the tray on the back of the chair and connect them. Then turn the tray to the front and press both sides of the tray until it clicks into place with the fasteners on the sides of the chair legs.



CLEANING AND MAINTENANCE:

1. Periodically tighten bolts as needed.
2. Wipe chair with slightly damp cloth.



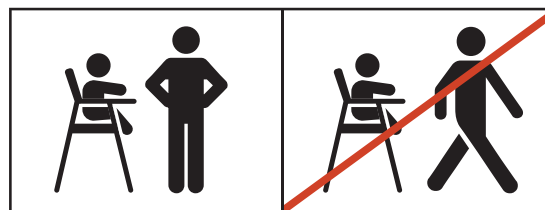
⚠ WARNING ⚠

FALL HAZARD: Children have suffered severe head injuries including skull fractures when falling from high chairs. Falls can happen suddenly if child is not restrained properly.

- Only children capable of sitting upright, unassisted should use this high chair.
- Always use restraints and adjust to fit snugly.
- Stay near and watch child during use.
- Discontinue use of this chair if child is a maximum weight of 35lbs/15.8kgs.
- The child should be secured in the high chair at all times by the restraint system.

164HGHCBK / 164HGHCDDB / 164HGHCMO / 164HGHCHNAT / 164HGHCHWN / 164HGHCKDBK / 164HGHCKDDB / 164HGHCKDMO / 164HGHCKDNT / 164HGHCKDWN / 164HGHCKDBK / 164HGHCKDDB / 164HGHCKDMA / 164HGHCKDNA / 164HGHCKDWA / 274HCBKWTASM / 274HCGYWTASM / 274HCHRWHLBK / 274HCHRWHLGY / 274HCGYTRASM / 274HCBKTRASM / 274HCHAIRBK / 274HCHAIRGY

Lancaster Table and Seating, 2205 Old Philadelphia Pike, Lancaster, PA 17602 • 1-800-942-0412



WARNING:

ATTENTION:

ACHTUNG:

ADVERTENCIA:

NEVER LEAVE CHILD UNATTENDED

NE JAMAIS LAISSER L'ENFANT
SANS SURVEILLANCE

LASSEN SIE DAS KIND NICHT
UNBEAUF SICHTIGT

NO DEJE AL NINO SIN VIGILANCIA