



PFA & PFC VENTLESS COUNTERTOP DEEP FRYERS REPLACEMENT PARTS LIST

EFFECTIVE OCTOBER 10, 2023

Superseding All Previous Parts Lists.

The Company reserves the right to make substitution in the event that items specified are not available.

ERRORS: Descriptive and/or typographic errors are subject to correction.

PERFECT FRY COMPANY

42 Allen Martin Drive, Essex Junction, Vermont 05452 USA Telephone: (802) 658-6600 Fax: (802) 860-3732
www.perfectfry.com

P/N 83723 Rev U (10/23)

WARNING

DO NOT store or use gasoline or other flammable vapors and liquids in the vicinity of this or any other appliance.

WARNING

Improper installation, alteration, service or maintenance can cause property damage, injury or death. Read the installation, operating and maintenance instructions thoroughly before installing or servicing this appliance.

WARNING

Installation, maintenance and repairs should be performed by a Perfect Fry Authorized Service and Parts (ASAP) company technician or other qualified personnel. Installation, maintenance or repairs by an unauthorized and unqualified personnel will void the warranty.

WARNING

Installation and all connections must be made according to national and local regulations and codes in force.

WARNING

A country approved all pole circuit breaker with a minimum open contact gap of 3mm must be used for proper installation. (CE countries)

WARNING

During the warranty period if a customer elects to use a non-original part or modifies an original part purchased from Perfect Fry and/or its Authorized Service and Parts (ASAP) companies, this warranty will be void. In addition, Perfect Fry and its affiliates will not be liable for any claims, damages or expenses incurred by the customer which arises directly or indirectly, in whole or in part, due to the installation of any modified part and/or received from an unauthorized service center.

WARNING

This appliance, when installed, must be electrically grounded in accordance with local codes, or in the absence of local codes, with the National Electrical Code, ANSI/NFPA 70, or the Canadian Electrical Code, CSA C22.2, as applicable.

WARNING

Adequate means must be provided to LIMIT the movement of this appliance without depending on the electrical cord connection. Single appliances equipped with legs must be stabilized by installing anchor straps. All appliances equipped with casters must be stabilized by installing restraining chains.

WARNING

This appliance is intended for professional use only and should be operated by fully trained and qualified personnel.

WARNING

If the supplied power cord is damaged, it must be replaced by a Perfect Fry Authorized Service and Parts (ASAP) company technician, or a similarly qualified person in order to avoid a hazard.

WARNING

The power supply must be disconnected before servicing, maintaining or cleaning this appliance.

WARNING

The appliance is NOT jet stream approved. DO NOT clean the appliance with a water jet.

WARNING

DO NOT attempt to move this appliance or transfer hot liquids from one container to another when the unit is at operating temperature or filled with hot liquids. Serious personal injury could result if skin comes in contact with the hot surfaces or liquids.

WARNING

DO NOT sit or stand on this appliance. Serious injury could result from slipping, falling or contact with hot surfaces or liquids.

WARNING

NEVER use the appliance as a step for cleaning or accessing the ventilation hood. Serious injury could result from slips, trips or from contacting hot surfaces or liquids.

WARNING

DO NOT use the appliance unless it is properly secured to a table, stand or freezer / refrigerated base suited to handle the weight of the entire appliance.

WARNING

DO NOT operate appliance unless all panels and access covers are attached correctly.

WARNING

It is recommended that this appliance be inspected by a qualified service technician for proper performance and operation on a yearly basis.

TABLE OF CONTENTS

PFA MODEL 4

PFC MODEL 6

PERFECT FRY FILTER AREA 8

PFA OIL VAT ASSEMBLY 10

PFC OIL VAT ASSEMBLY..... 11

PFA DOOR/DRAWER AREA 12

PFC DOOR 13

PERFECT FRY HEATER ASSEMBLIES..... 14

PFA 3 PHASE 15

EBOX..... 16

FIRE SYSTEM 18

OPTIONAL PERFECT FILTER..... 20

IMPORTANT FOR FUTURE REFERENCE

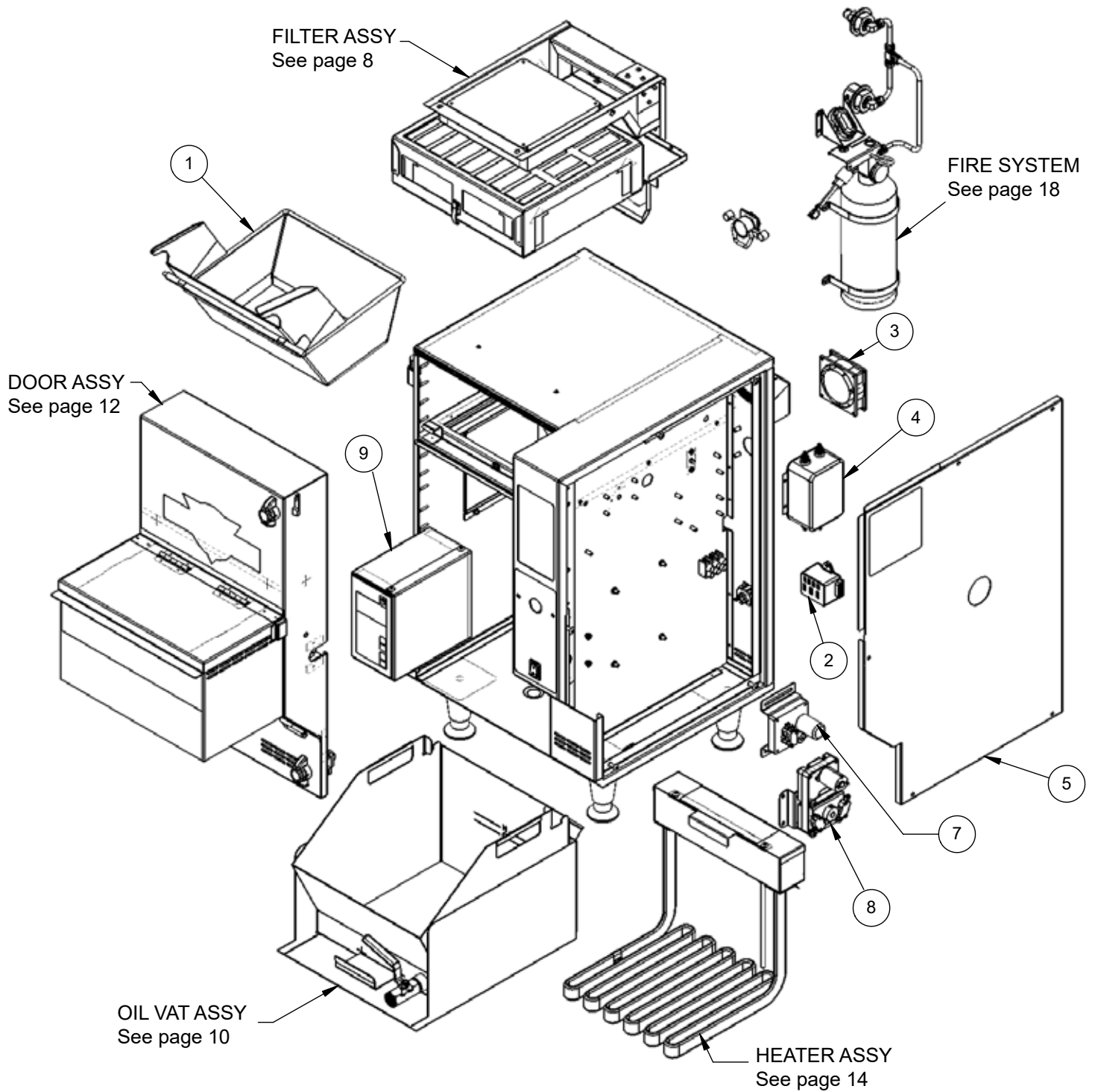
Please complete this information and retain this manual for the life of the equipment:

Model # _____

Serial # _____

Date Purchased _____

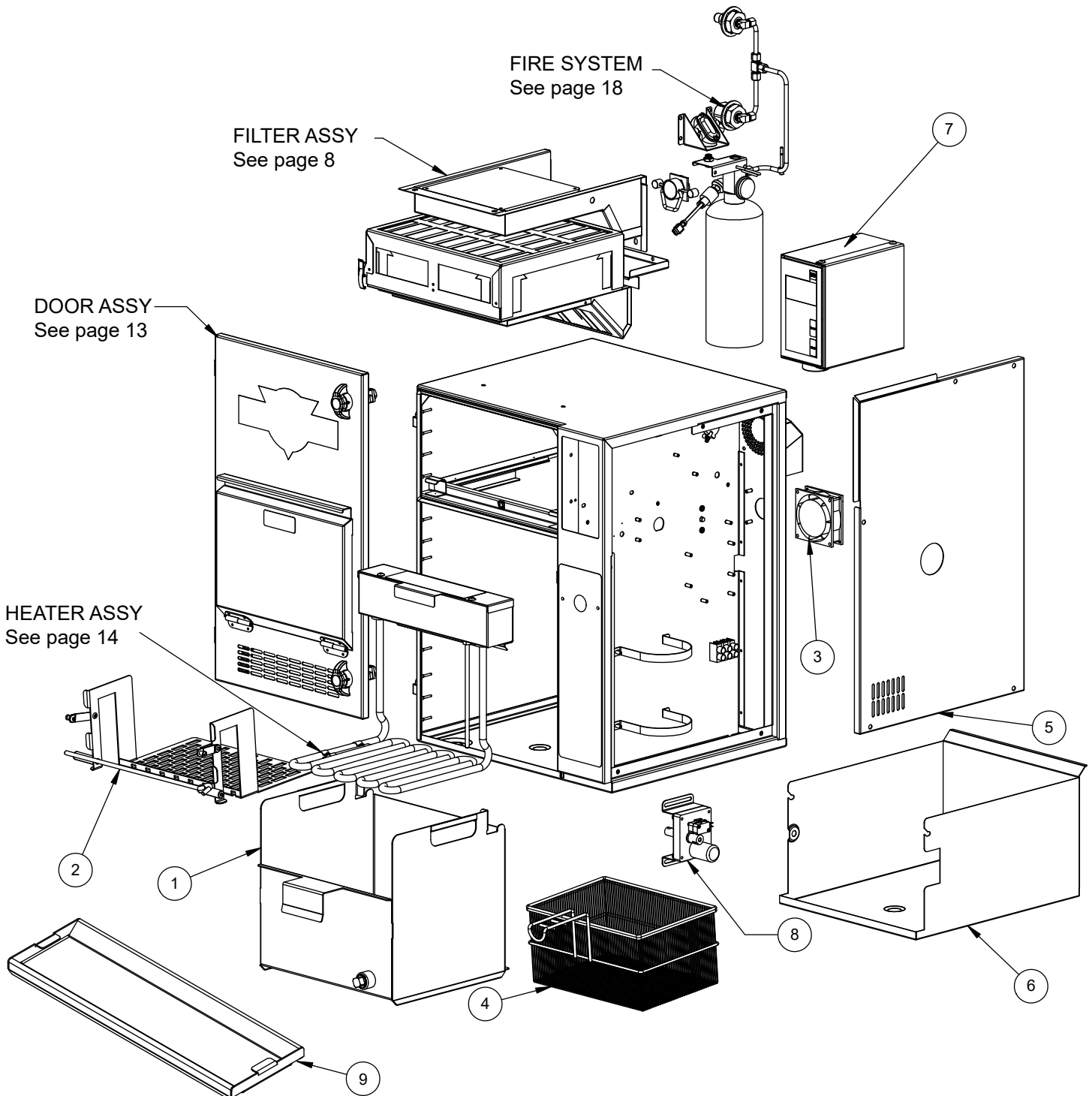
PFA MODEL



PFA MODEL

| Item | Old P/N | New P/N | Description | QTY |
|------|-----------|---------|--|-----|
| 1 | 3BA001 | 83258 | ASSEMBLY, BASKET PFA | 1 |
| 2 | 3CT765-C | 83706 | KIT, ASSEMBLYFEMALE CONNECTOR | 1 |
| 3 | 2DT952 | 83423 | KIT, CONTROL FAN | 1 |
| 4 | 6WT903 | 83303 | FILTER, EMI 30A | 1 |
| 5 | — | 83780 | CABINET, COVER SIDE ASSEMBLY PFA | 1 |
| 7 | 2HA001-C | 83237 | DRAWER MOTOR ASSEMBLY | 1 |
| 8 | 2HA002-C | 83242 | BASKET MOTOR ASSEMBLY | 1 |
| 9 | 2WS802-C | 83677 | E BOX SERVICE KIT 1 PH (see EBOX pages for detailed breakdown) | - |
| NS | 2DT002-CL | 83636 | KIT, FIRE ALARM WITH INSTRUCTIONS | 1 |
| NS | 2DT965 | 83697 | KIT GASKET PFC/PFA PRIOR 5/16 | - |
| NS | 2DT953-C | 83425 | KIT, FLAT MAGNETIC SWITCH | - |
| NS | 2DT954 | 83424 | KIT, ROUND MAGNETIC SWITCH | - |
| NS | 6HT646 | 83209 | SWITCH, AIRFLOW | 1 |
| NS | 6CT100 | 83214 | FEMALE PLUG COVER | - |
| NS | 6FR021 | 83216 | MOLDED SILICONE DOOR GASKET | - |
| NS | 6CT720 | 83228 | BUSHING, STRAIN RELIEF | - |
| NS | 2HA002 | 83242 | ASM, MOTOR MODULE BASKET PFA | - |
| NS | 6HT739 | 83265 | DRAIN HOSE, OIL VAT | - |
| NS | 6HA007 | 83271 | HINGE, LIFT OFF | - |
| NS | 6HA023 | 83272 | GASKET, MOTOR PFA | - |
| NS | 4CA004 | 83296 | HARNESS PFA EBOX TO MOTORS AND DOOR SWITCHES | - |
| NS | 6CA006 | 83447 | CORD, HL, FRONT | - |
| NS | 3CT765 | 83457 | ELEMENT FEMALE PLUG AND HARNESS | - |
| NS | 6HA004 | 83487 | LEG, 4", PFA, FLANGED | 1 |
| NS | 6HM013 | 83554 | ROCKER SWITCH, HEAT LAMP | - |
| NS | 6HM100 | 83555 | COVER, ROCKER SWITCH | - |
| NS | S2028501 | S0713 | SILICONE 3OZ RTV | - |
| NS | 2DT962 | 83669 | KIT, LIFT AND TURN LATCH | - |
| NS | 2DT958-C | 83699 | KIT FEMALE CONNECTOR | - |
| NS | 6TT001 | 83702 | MINI MOLEX PIN REMOVAL TOOL | - |
| NS | 2SK001-C | 83721 | ASM DRAWER AND LID W/DECALS | - |
| NS | 2DT950-C | 83722 | KIT PFA FRONT PANEL SERVICE | - |
| NS | — | 83382 | HARNESS, EMI TO EBOX | - |
| NS | 4CT686 | 83293 | HARNESS, CTRL 1 | - |
| NS | 6HA003 | 83279 | LEG, 4" PFA | 1 |

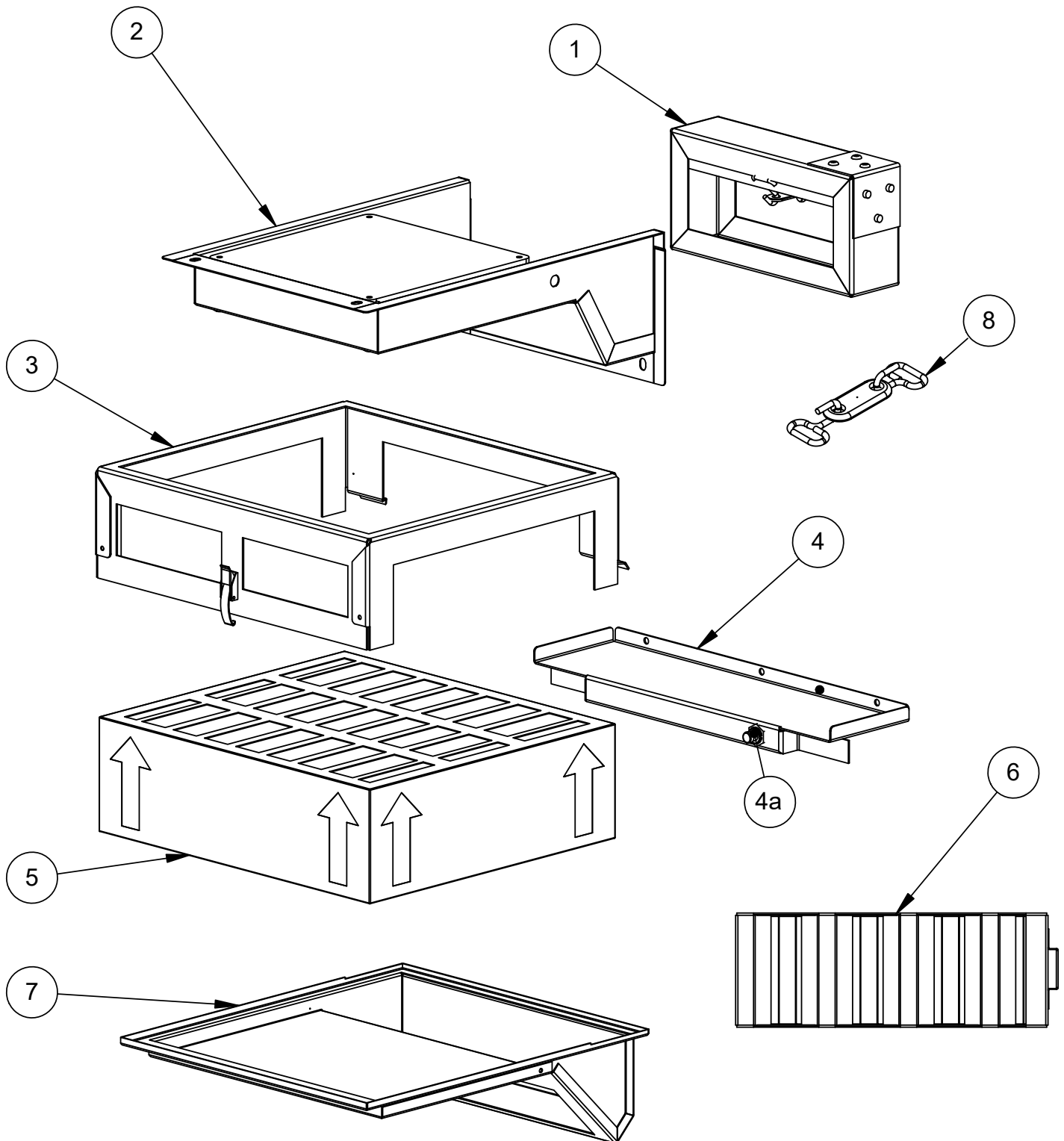
PFC MODEL



PFC MODEL

| Item | Old P/N | New P/N | Description | QTY |
|------|----------|---------|--|-----|
| 1 | 2DT005-C | 83273 | ASSEMBLY, VAT PFC | 1 |
| 2 | 3HT740-C | 83193 | ASSEMBLY, BASKET LIFT PFC | 1 |
| 3 | 2DT952 | 83423 | KIT, CONTROL FAN | 1 |
| 4 | 6HT905 | 83281 | BASKET, EXTRA LARGE PFC | 1 |
| 5 | - | 83781 | CABINET, COVER SIDE ASSEMBLY PFC | 1 |
| 6 | 6ST734-C | 83198 | TRAY, SPILL PFC | 1 |
| 7 | 2WS802-C | 83677 | E BOX SERVICE KIT 1 PH (see EBOX pages for detailed breakdown) | - |
| 8 | 2HT689 | 83231 | MOTOR ASSEMBLY | - |
| NS | 3CT765-C | 83706 | ASSEMBLY, FEMALE CONNECTOR | 1 |
| NS | 6HT002 | 83649 | KIT, COVER X-L BASKET | 1 |
| NS | 2DT959 | 83697 | KIT GASKET PFC/PFA PRIOR 5/16 | - |
| 9 | 6ST105 | 83181 | PFC DRIP TRAY | - |
| NS | 6CT100 | 83214 | FEMALE PLUG COVER | - |
| NS | 6FR021 | 83216 | MOLDED SILICONE DOOR GASKET | - |
| NS | 6CT720 | 83228 | BUSHING, STRAIN RELIEF | - |
| NS | 6HT739 | 83265 | DRAIN HOSE, OIL VAT | - |
| NS | 4CT686 | 83293 | HARNESS E BOX TO FAN AND FILTER SWITCHES | - |
| NS | 3CT765 | 83457 | ELEMENT FEMALE PLUG AND HARNESS | - |
| NS | - | 83625 | FILTER DRAIN HOSE ASSEMBLY | - |
| NS | S2028501 | S0713 | SILICONE 3OZ RTV | - |
| NS | 2DT962 | 83669 | KIT, LIFT AND TURN LATCH | - |
| NS | 2DT958-C | 83699 | KIT FEMALE CONNECTOR | - |
| NS | 6TT001 | 83702 | MINI MOLEX PIN REMOVAL TOOL | - |
| NS | - | 83786 | E BOX SERVICE KIT MCD J | - |
| NS | 2DT953-C | 83425 | KIT, FLAT MAGNETIC SWITCH | - |
| NS | 2DT954 | 83424 | KIT, ROUND MAGNETIC SWITCH | - |
| NS | - | 83382 | HARNESS, EMI TO EBOX | - |
| NS | 4CT687 | 83292 | HARNESS PFC EBOX TO MOTOR AND DOOR SWITCHES. | - |
| NS | 6HV026 | 83282 | FOOT, RUBBER | 1 |

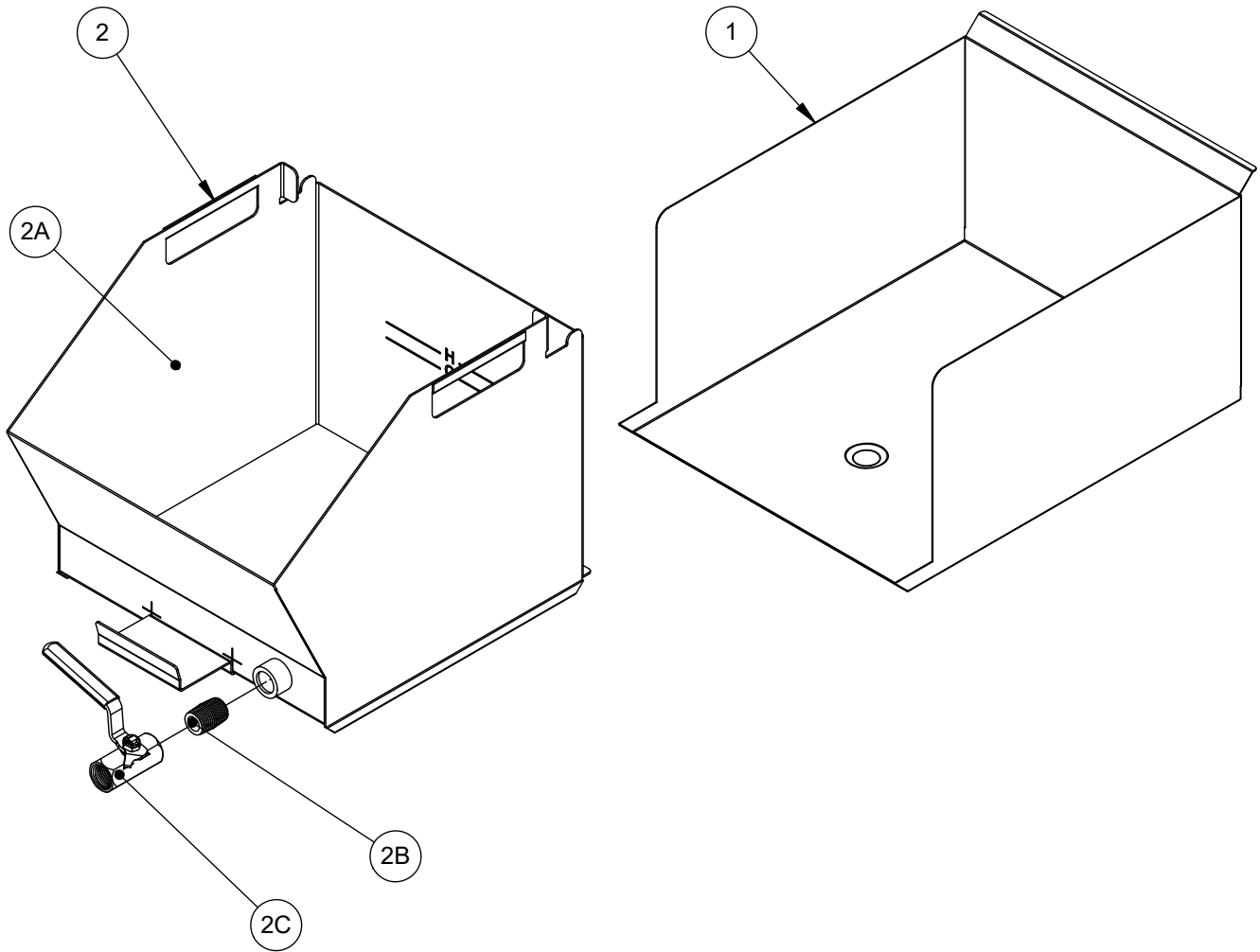
PERFECT FRY FILTER AREA



PERFECT FRY FILTER AREA

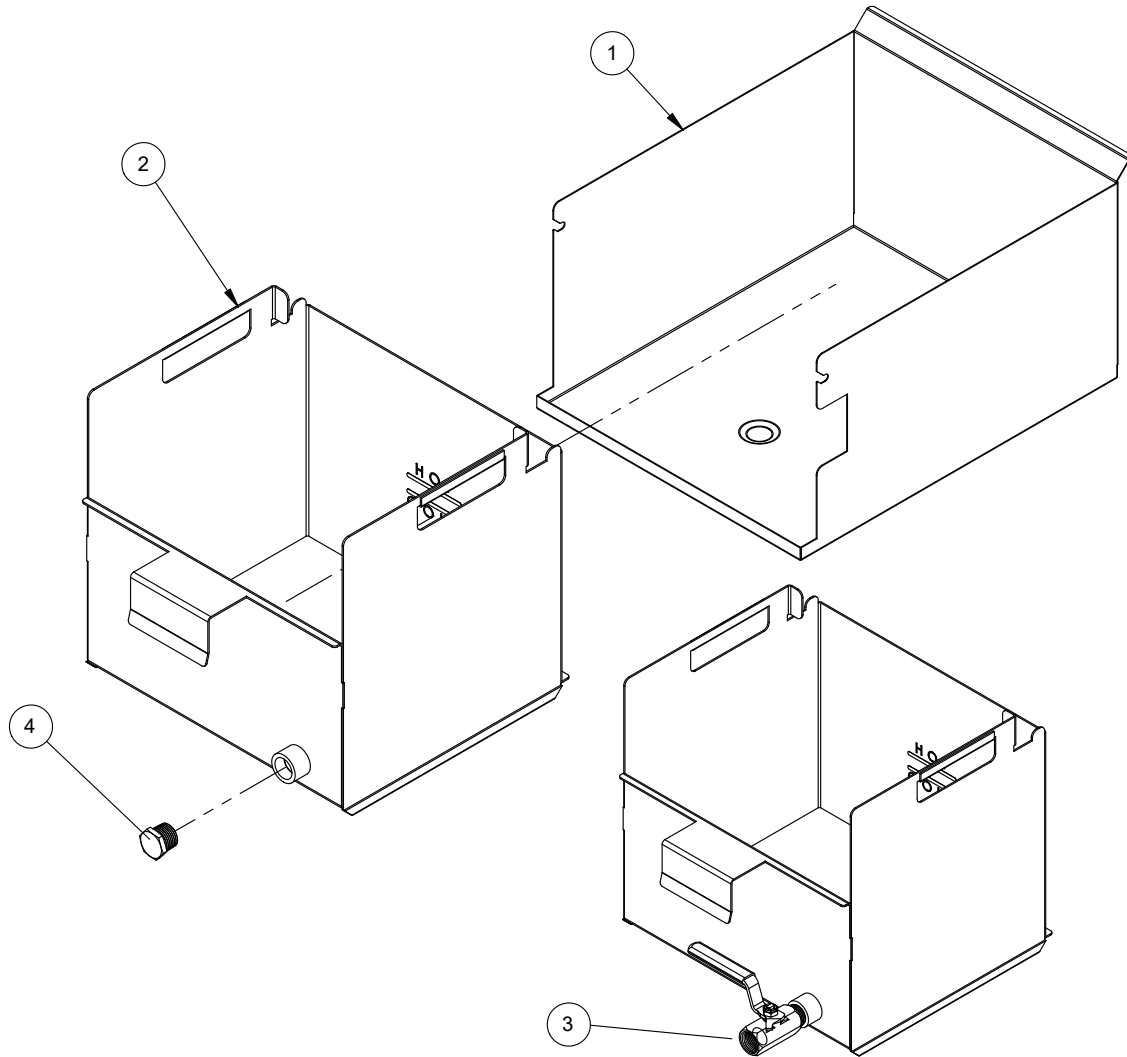
| Item | Old P/N | New P/N | Description | QTY |
|------|----------|---------|--------------------------------|-----|
| 1 | 6HT588 | 83252 | DAMPER, FIRE ACTUATED | 1 |
| 2 | 2HT723-C | 83254 | ASSEMBLY, AIRFLOW MODULE | 1 |
| 3 | 6ST730-C | 83067 | BRACKET, FILTER CAGE | 1 |
| 4 | 2DT955-C | 83260 | ASSEMBLY, AIR FILTER SWITCH | 1 |
| 4A | 6HT726 | 83262 | SWITCH, AIR FILTER | 1 |
| 5 | — | 83544 | FILTER, ODOR FULL SIZE | 1 |
| 5 | 2FK001 | 83543 | 2 STAGE FILTER | 1 |
| 6 | 3HT727 | 83251 | ASSEMBLY, GREASE FILTER | 1 |
| 7 | 6ST728 | 83007 | TRAY, GREASE FILTER | 1 |
| 8 | — | 83792 | FUSIBLE LINK | 1 |
| NS | 6HT647 | 83210 | 1/8" ID PVC TUBING | — |
| NS | 6HT711 | 84100 | GASKET, MAIN FAN (BY THE INCH) | 55 |
| NS | 6CT001 | 83255 | RECEPTACLE, JR 3 PIN | — |

PFA OIL VAT ASSEMBLY



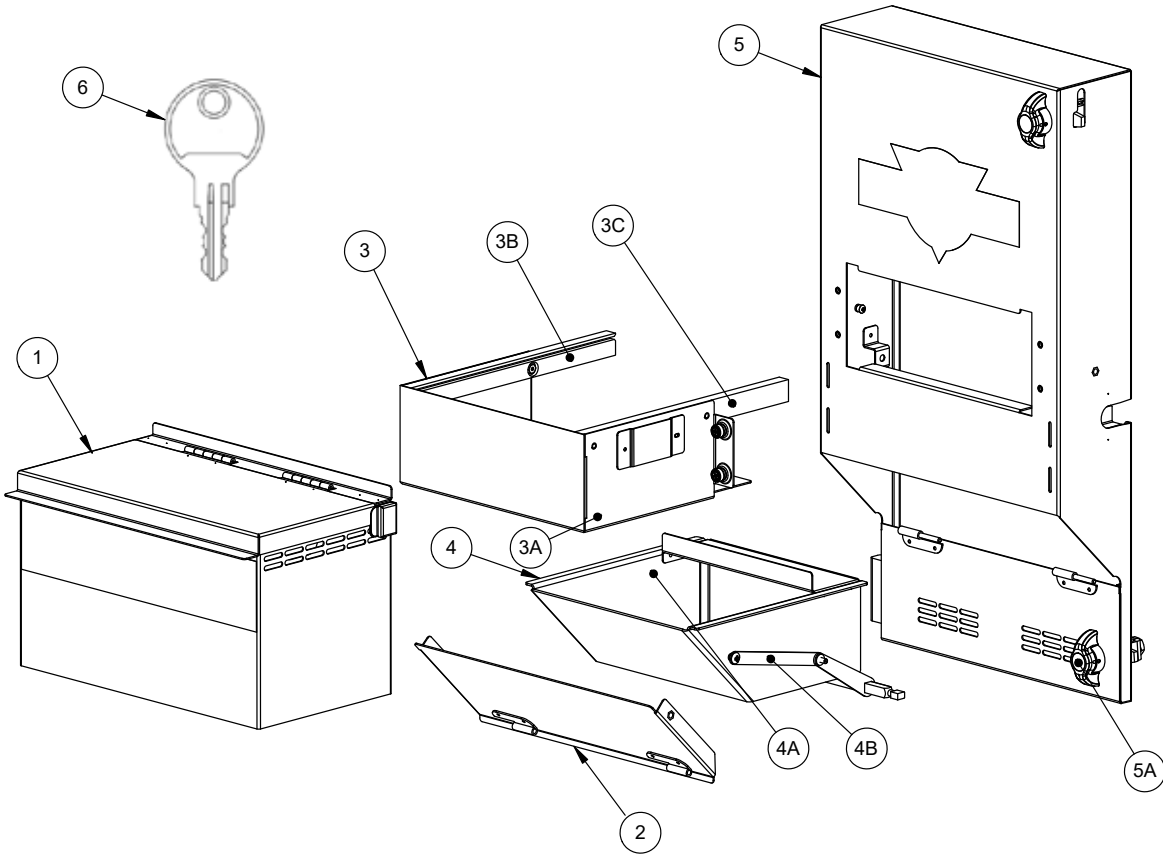
| Item | Old P/N | New P/N | Description | QTY |
|------|----------|---------|----------------------------|--------|
| 1 | 6SA022-C | 83182 | TRAY, SPILL PFA | 1 |
| 2 | 2DT003-C | 83256 | ASSEMBLY, VAT OIL 11 LITER | 1 |
| 2A | 6SA003-C | 83010 | VAT, OIL 11 LITER | 1 |
| 2B | 6DT934 | 83264 | NIPPLE, .500 NPT CL SS | 1 |
| 2C | 6DT930 | 83263 | VALVE, OIL MANUAL BALL SS | 1 |
| NS | 2DT931 | 83653 | KIT, OIL DRAINAGE | OPTION |
| NS | 6HT739 | 83265 | HOSE, OIL DRAINAGE | OPTION |

PFC OIL VAT ASSEMBLY



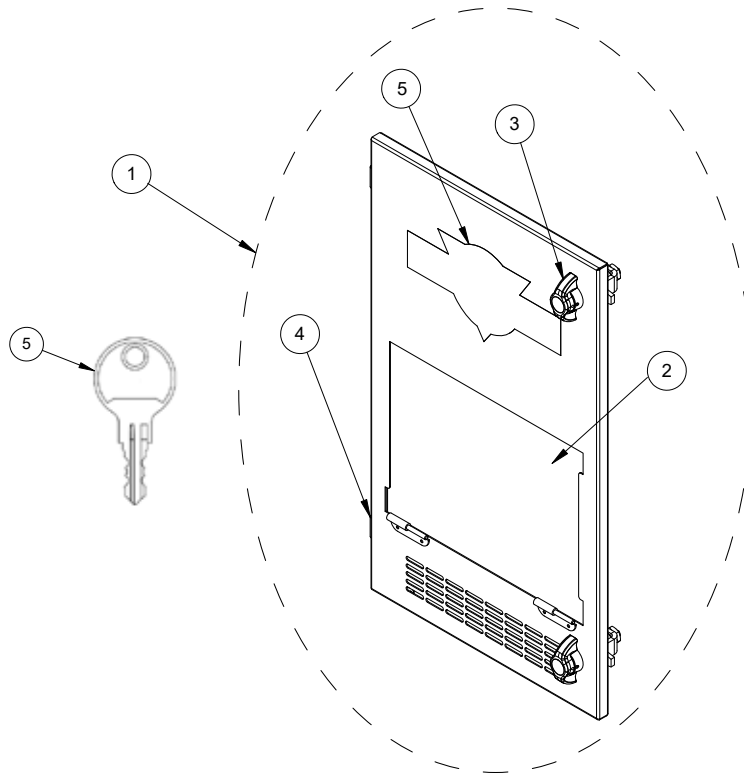
| Item | Old P/N | New P/N | Description | PFC QTY |
|------|----------|---------|------------------------------|---------|
| 1 | 6ST734-C | 83198 | TRAY, SPILL PFC | 1 |
| 2 | 2DT005-C | 83273 | ASSEMBLY, VAT OIL PFC | 1 |
| 3 | 60212101 | 83277 | VALVE T, OIL MANUAL BALL SS. | — |
| 4 | N/A | 52808 | PLUG, 1/2" NPT HEX HEAD | |
| NS | 2DT931 | 83653 | KIT, OIL DRAINAGE | OPTION |
| NS | 6HT739 | 83265 | HOSE, OIL DRAINAGE | OPTION |

PFA DOOR/DRAWER AREA



| Item | Old P/N | New P/N | Description | QTY |
|------|----------|---------|-----------------------------------|--------|
| 1 | 2DT007-C | 83203 | ASSEMBLY, DRAWER AND LID | 1 |
| 2 | 6SA021-C | 83021 | RAMP BASKET PFA | 1 |
| 3 | 2DT008-C | 83014 | ASSEMBLY, DRAWER SLEEVE | 1 |
| 4 | 2DT941-C | 83217 | ASSEMBLY, SHOVEL DRAWER PFA | 1 |
| 4A | 6SA009-C | 83223 | ASSEMBLY, SHOVEL | 1 |
| 4B | 6SA006-C | 83222 | ARM UPPER DRAWER | 2 |
| 5 | 2DT950-C | 83722 | ASSEMBLY, FRONT PANEL PFA | 1 |
| 5A | 6DA100 | 83059 | LATCH, VICE WING NON-LOCKING | 2 |
| NS | 6DA101 | 83060 | LATCH, VICE WING LOCKING | OPTION |
| NS | 6HA010 | 83066 | SPRING, BASKET RAMP PFA | 2 |
| 6 | N/A | 83848 | SPARE LOCK KEY PERFECT FRY (PAIR) | 1 |

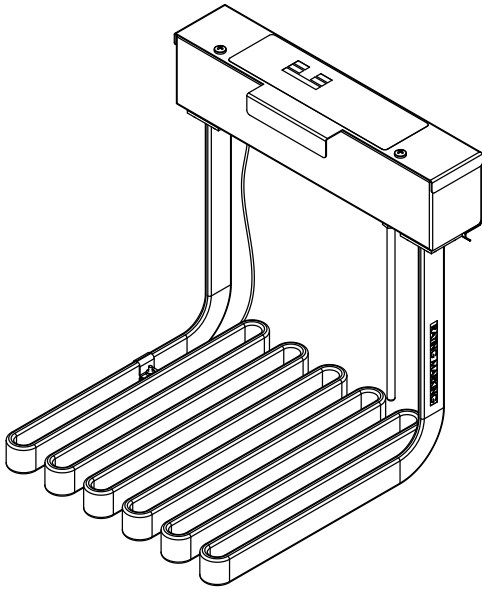
PFC DOOR



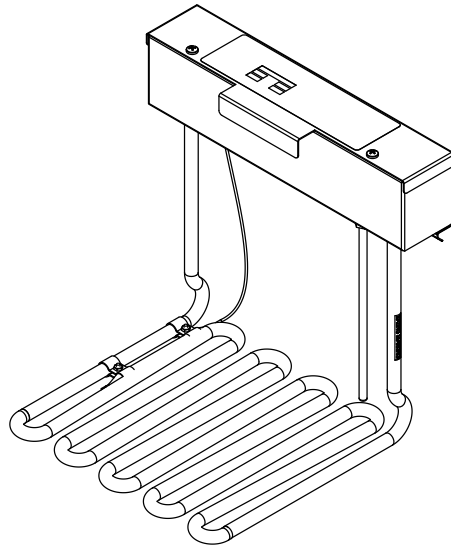
| Item | OLD P/N | NEW P/N | Description | QTY |
|------|---------|---------|--------------------------------------|-----|
| 1 | | 83070 | PANEL FRONT COMPLETE (W/OUT ITEM #5) | |
| 2 | | 83694 | PANEL DOOR ASM | 1 |
| 3 | 6DA100 | 83059 | LATCH, VICE WING NON-LOCKING | 2 |
| 4 | 2DT961 | 83700 | HINGE MINI LIFT OFF | 1 |
| 5 | 6LT893 | 83080 | LABEL, PERFECT FRY LOGO LARGE | 1 |
| 6 | N/A | 83848 | SPARE LOCK KEY PERFECT FRY (PAIR) | 1 |
| NS | 2DT957 | 83698 | KIT DOOR SPRING PFC (2pc) | 1 |
| NS | | 83078 | LABEL MAINTENANCE GUIDE PFC | - |

PERFECT FRY HEATER ASSEMBLIES

FIREBAR STYLE

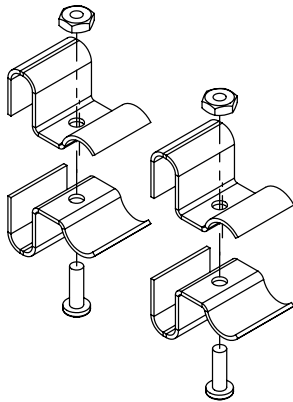


STANDARD

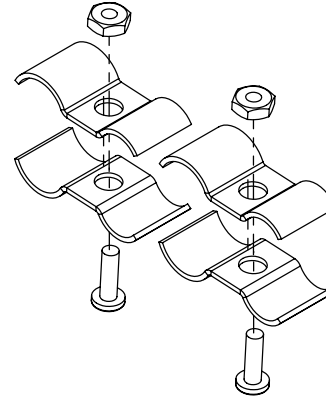


ADDITIONAL PARTS

FIREBAR CLAMP KIT

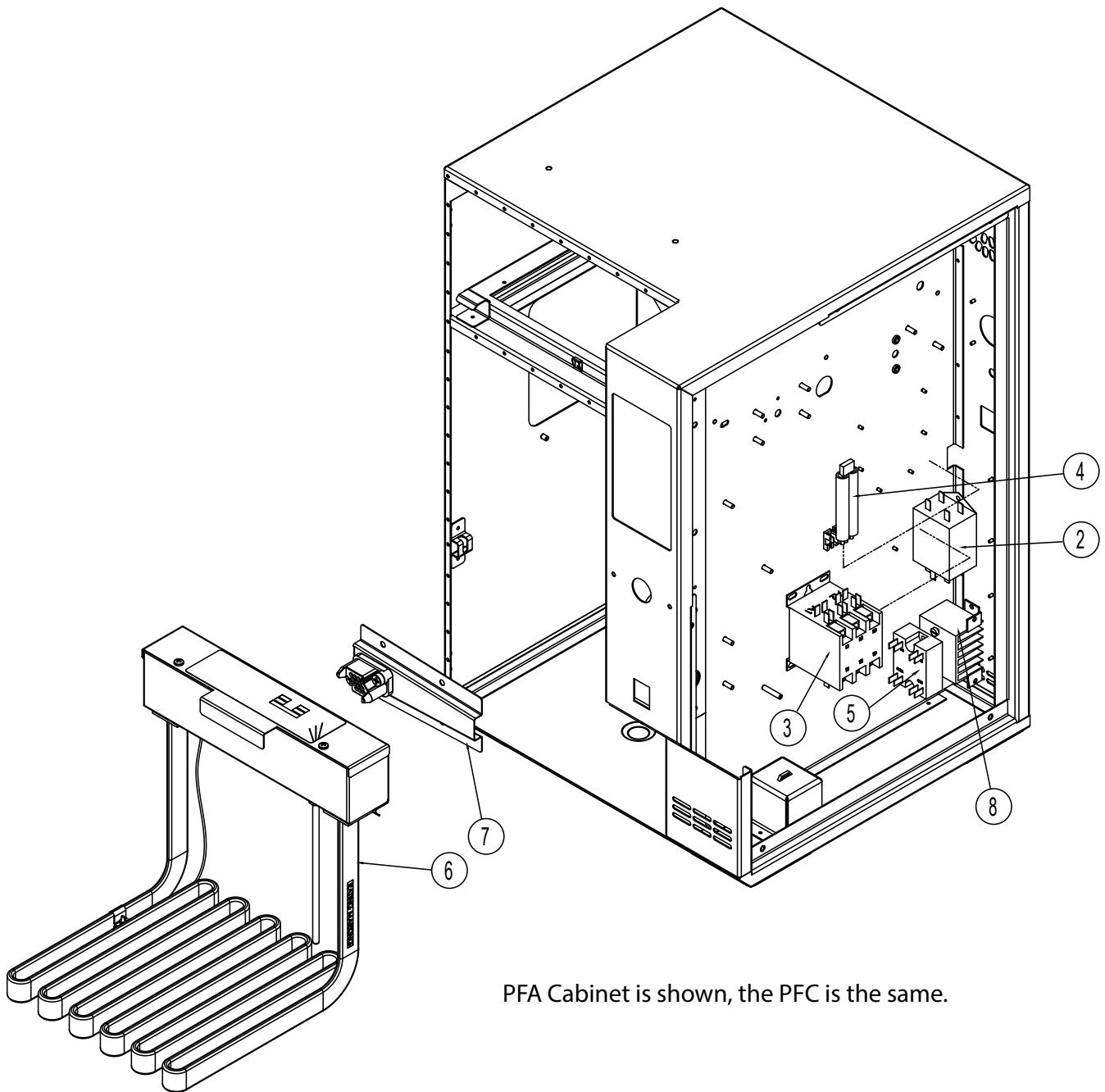


STANDARD CLAMP KIT



| Item | Old P/N | New P/N | Description |
|--------------------------|---------|---------|---|
| STANDARD ELEMENTS | | | |
| 8ET900 | 83151 | | ELEMENT ASSY, 5.7 kW, 240V |
| 2ET922 | 83152 | | ELEMENT ASSY, 5.7 kW, 208V |
| 2ET763 | 83153 | | ELEMENT ASSY, 3.75 kW, 240V |
| 2ET760 | 83155 | | ELEMENT ASSY, 1.875 kW, 120V |
| FIREBAR ELEMENTS | | | |
| 2EA001 | 83339 | | ASM ELEMENT FIREBAR 240V 7200W (PFA ONLY) |
| 2EA002 | 83340 | | ASM ELEMENT FIREBAR 400V 7200W (PFA ONLY) |
| 2ET002 | 83341 | | ASM ELEMENT FIREBAR 400V 5700W |
| N/A | 83903 | | KIT, CLAMP, FIREBAR ELEMENT |

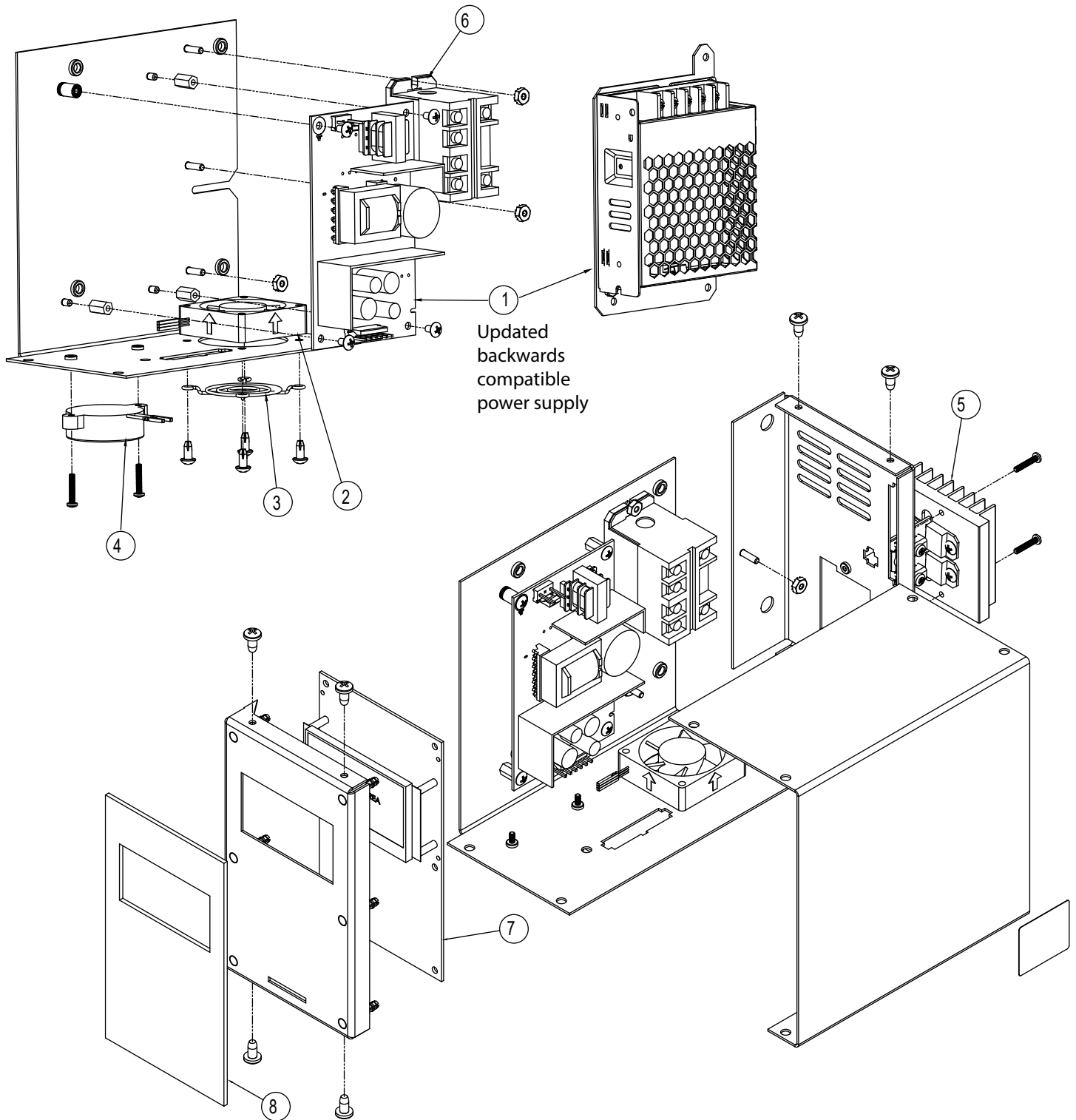
PFA 3 PHASE



PFA Cabinet is shown, the PFC is the same.

| Item | Old P/N | New P/N | Description | QTY |
|------|----------|---------|------------------------------------|-----|
| 2 | 6HT909 | 83302 | FILTER, EMI, 20A 3 PHASE | — |
| 3 | 60157203 | 83304 | CONTACTOR, DP 3P 50A 600V 220 COIL | — |
| 4 | — | 83623 | CONTACTOR SNUBBER 3PH | — |
| 5 | 6HA031 | 83312 | SSR, DUAL, 12V | — |
| 6 | 2EA002 | 83340 | ASM ELEMENT FIREBAR 400V 7200W | — |
| 7 | 3CT766 | 83348 | ASM 3 PH CONNECTOR WITH HARNESS | — |
| 8 | 6HA032 | 83310 | HEAT SINK, OVAL RELAY | — |
| NS | 2WT800-C | 83674 | E BOX 3 PHASE SERVICE KIT | — |

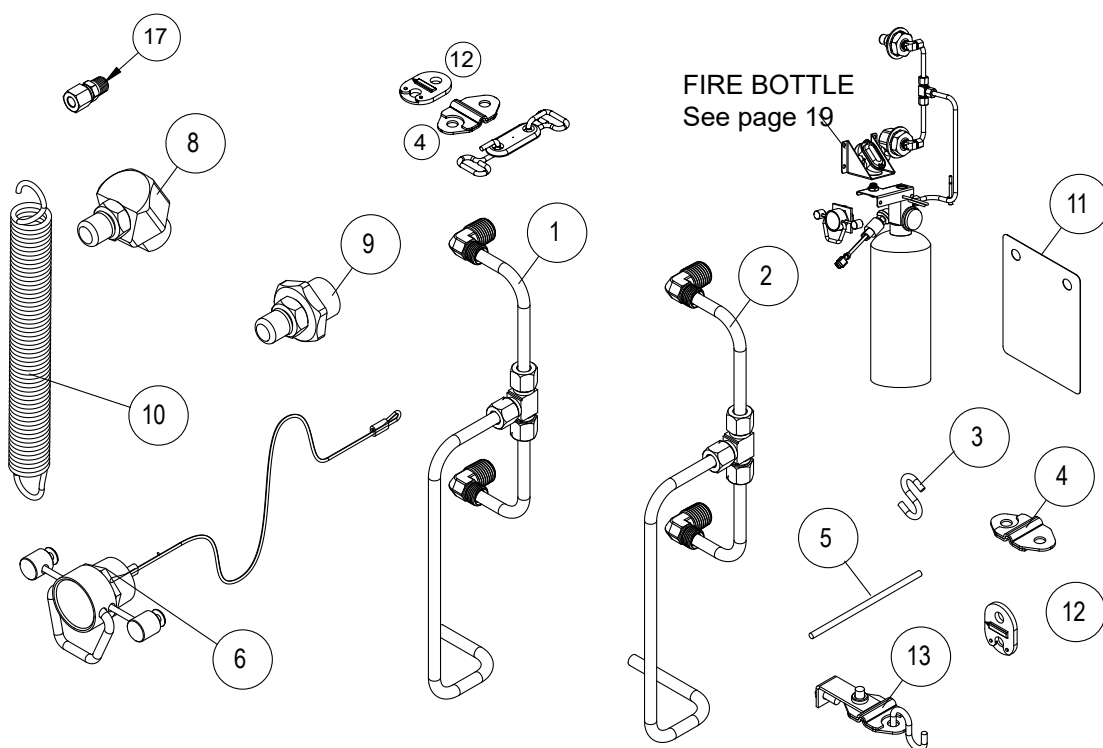
EBOX



EBOX

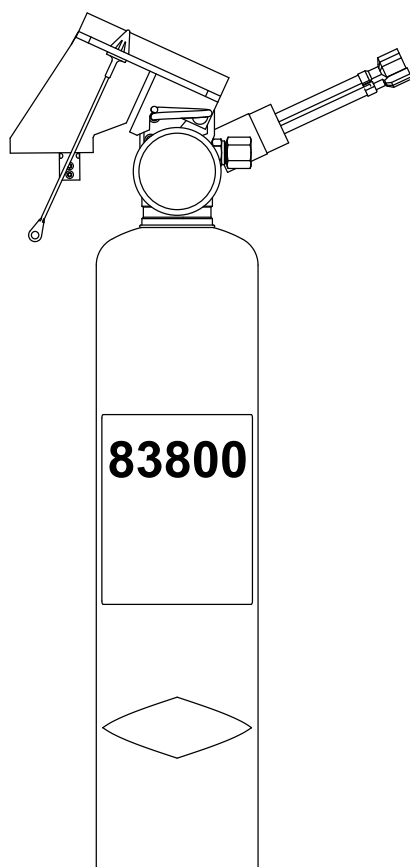
| Item | P/N | Description | QTY |
|------|-------|--|-----|
| 1 | 84155 | KIT, POWER SUPPLY, 83373 REPLACEMENT & CURRENT | 1 |
| 2 | 83421 | FAN, E BOX 12V, TERMINATED | 1 |
| 3 | 83376 | FAN GUARD, EBOX | 1 |
| 4 | 83422 | BUZZER, E BOX, TERMINATED | 1 |
| 5 | 83375 | ASSEMBLY, SCR BOARD | 1 |
| 6 | 83372 | RELAY, 12VAC, 2 POLE | 1 |
| NS | 83301 | HARNESS, EBOX POWER | 1 |
| NS | 83300 | HARNESS, EBOX PCB TO 20 PIN PLUG | 1 |
| NS | 83677 | E BOX SERVICE KIT, 1 PH | 1 |
| NS | 83674 | E BOX SERVICE KIT, 3 PH | 1 |
| 7 | 83371 | PCB ASSEMBLY, E BOX | 1 |
| 8 | 83378 | KEYPAD, STANDARD | 1 |

FIRE SYSTEM



| Item | Old P/N | New P/N | Description | QTY |
|------|-----------|---------|---|-----|
| 1 | 6GT011 | 83783 | WET CHEM DIST TALL EXT, PFA | — |
| 2 | 6GT011 | 83783 | WET CHEM DIST TALL EXT, PFC | — |
| 3 | 6GT597 | 83088 | S HOOK | — |
| 4 | 6FP00601 | 83089 | FUSIBLE LINK, 250°F (FOR UNITS MANUFACTURED AFTER 5/2016)* | — |
| 5 | 6GT886 | 83091 | BREAK ROD, RED, MANUAL PULL | — |
| 6 | - | 83096 | ASSY, MANUAL PULL WITH CABLE | — |
| 8 | 2GT002 | 83110 | ASSY, LOWER NOZZLE, WET CHEM | — |
| 9 | 2GT003 | 83111 | ASSY, UPPER NOZZLE, WET CHEM | — |
| 10 | - | 83787 | SPRING, FIRE MASTER | — |
| NS | 6ST709-11 | 83207 | BRACKET, FUSIBLE LINK TAB | — |
| 11 | 6GV013 | 83350 | FIREMASTER INSPECTION TAG (FOR UNITS MANUFACTURED BEFORE 5/2016)* | — |
| 12 | 6GT587 | 83658 | LINK, FUSIBLE, 280°F (FOR UNITS MANUFACTURED BEFORE 5/2016)* | — |
| 13 | 6FP007 | 83659 | KIT, ASSY, FUSIBLE LINK TAB W/ LINK | — |
| 17 | - | M0959 | DISCHARGE PORT COMPRESSION FITTING W/ NUT | — |
| NS | 2FP001-CL | 83701 | KIT FUSIBLE LINK/CAPS (FOR UNITS MANUFACTURED AFTER 5/2016) | — |

* Per NAFPA 17A fusible links must be replaced every 6 months



NEW STYLE
3" Diameter



OLD STYLE
3-1/2" Diameter

| | |
|-------|--|
| 83794 | PFA FIRE EXTINGUISHER UPGRADE KIT This kit is used to replace the old style fire extinguishers and includes a new side cover in a PFA. (Requires Fire Extinguisher P/N 83800) |
| 83795 | PFC FIRE EXTINGUISHER UPGRADE KIT This kit is used to replace the old style fire extinguishers and includes a new side cover in a PFC. (Requires Fire Extinguisher P/N 83800) |
| 83807 | FIRE EXTINGUISHER REPLACEMENT AFTER DISCHARGE KIT This kit is used to replace new style fire extinguishers that have discharged in the event it can not be rebuilt and recharged by a local Amerex distributor. (Requires Fire Extinguisher P/N 83800) |
| 83804 | FIRE EXTINGUISHER RECHARGE KIT This kit is used to rebuild and recharge an existing new style fire extinguisher. To be done by a local Amerex dealer. |
| 83800 | FIRE EXTINGUISHER |

OPTIONAL PERFECT FILTER



| Item | P/N | Description | QTY |
|------|-------|--|-----|
| 1 | 84080 | PERFECT FILTER | 1 |
| 2 | 84081 | REPLACEMENT FILTERS, PERFECT FILTER (100x) | 1 |
| 3 | 84082 | OIL QUALITY SENSOR, FT440, HAND HELD | 1 |
| 4 | 84083 | OIL QUALITY SENSOR BOARD STORAGE BRACKET | 1 |