

Gas Salamander Broilers



351S36SBL36K, 351S36SBL60K, 351S36SBLWK, 351S36SBN36K, 351S36SBN60K, 351S36SBNWK

Parts Manual



Contents

Safety Precautions	3
Gas Pressure	3
Whole Assembly Diagram	4
Whole Assembly Parts List	5
Lift Assembly Diagram	6
Lift Assembly Parts List	7
Burner Assembly Diagram	8
Burner Assembly Parts List	9



4003027



Intertek

Conforms to ANSI STD Z83.11-2016
Conforms to CSA STD 1.8-2016
NSF Tested by ETL

Safety Precautions

CAUTION:

- Failure to comply with the following operation instructions could lead to potential hazards and/or unsafe practice and could result in injury and damage to product and property.

NOTICE:

- Local codes regarding installation vary greatly from one area to another. The National Fire Protection Association, Inc., states in its NFPA96 latest edition that Local codes are “Authority Having Jurisdiction” when it comes to requirement for installation of equipment. Therefore, installation should comply with all Local codes.
- This product is intended for commercial use only. Not for residential use. Use in residential applications will void warranty.

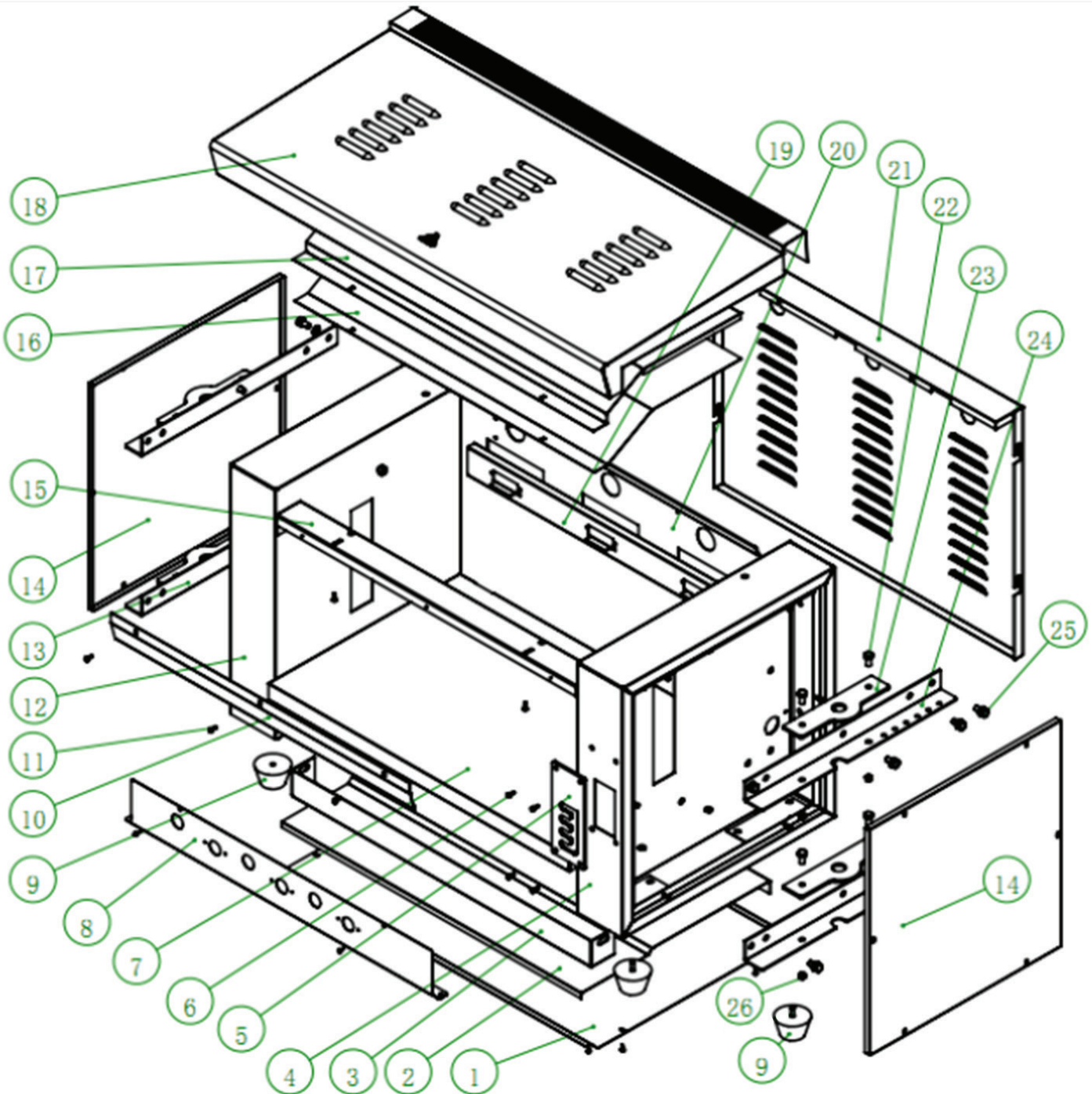
WARNING:

- Do not store or use gasoline or other flammable vapors and liquids in the vicinity of this or any other equipment.
- Improper installation, adjustment, alteration, service or maintenance could lead to property damage, injury or death. Read the installation, operating and maintenance instructions thoroughly before installing or servicing CPG equipment. This manual must be retained for future reference.
- A factory authorized agent must handle all maintenance and repair.

Gas Pressure

- The appliance and its individual shutoff valve (to be supplied by user) must be disconnected from the gas supply piping system during any pressure testing of that system at test pressures in excess of ½ PSI (3.45 kPa).
- The appliance must be isolated from the gas supply piping system by closing its individual manual shut-off valve during any pressure testing of the gas supply piping system at test pressures equal to or less than ½ PSI (3.45 kPa).

Parts Diagram: Whole Assembly



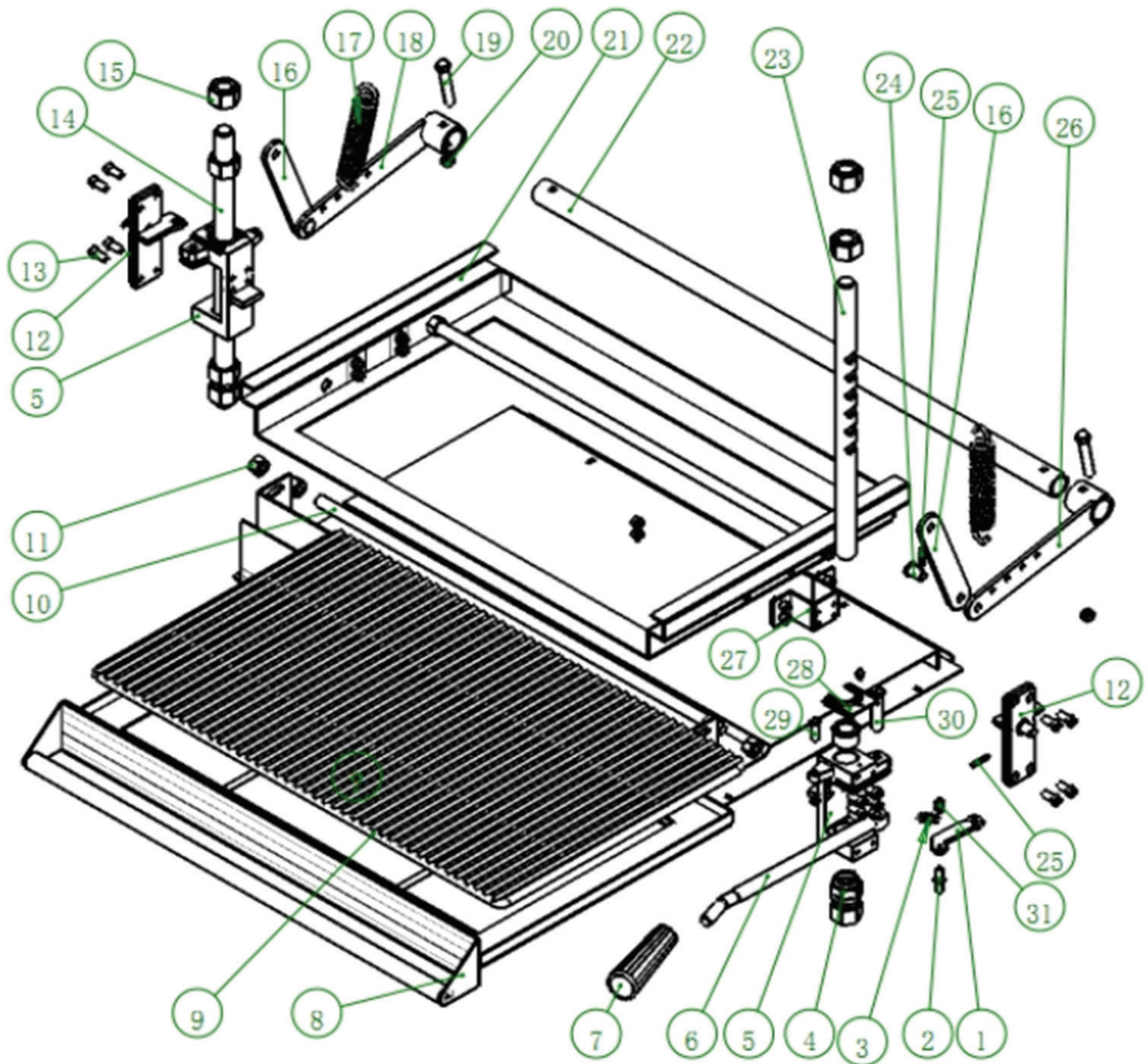
NOTE: * Part not shown in diagram.

Parts List: Whole Assembly

#	OUR ITEM #	DESCRIPTION	QTY
1	35134014034	BASEBOARD	1
2	35134014036	COTTON INSULATION PLATE	1
3	35134014039	BOTTOM BEAM	1
4	35134014003	SIDE PANEL (RIGHT)	1
5	35134014013	GEAR PLATE	1
6	351212221	BOLT	4
7	35134014001	BASEBOARD (BOX)	1
8	35134014040	FRONT PANEL	1
9	351090026	RUBBER FOOT	4
10	35134014016	BAFFLE	1
11	351210277	SCREW	-
12	35134014004	SIDE PANEL (LEFT)	1
13	35134014014	REINFORCING PLATE (LEFT)	2
14	35134008012	SIDE SEALING PLATE (LEFT & RIGHT)	2
15	35134008007	FRONT BEAM	1
16	35134008010	TOP PANEL (CHAMBER)	1
17	35134008014	COTTON PRESSING PLATE (TOP)	1
18	35134008009	TOP COVER PLATE	1
19	35134008039	SUPPORTING PLATE (PROBE)	1
20	35134014002	BACK PANEL (CHAMBER)	1
21	35134014006	SIDE SEALING PLATE (BACK)	1
22	351212427	BOLT	8
23	35134008024	SHAFT PLATE	4
24	35134014015	REINFORCING PLATE (RIGHT)	2
25	351214271	BOLT	12
26	351213138	NUT	-
27*	35134014021	MOUNTING KIT - WALL	-
28*	35128059015	MOUNTING KIT - S60, S60G24 RANGE	-
29*	35128051052	MOUNTING KIT - S36 RANGE	-

NOTE: * Part not shown in diagram.

Parts Diagram: Lift Assembly



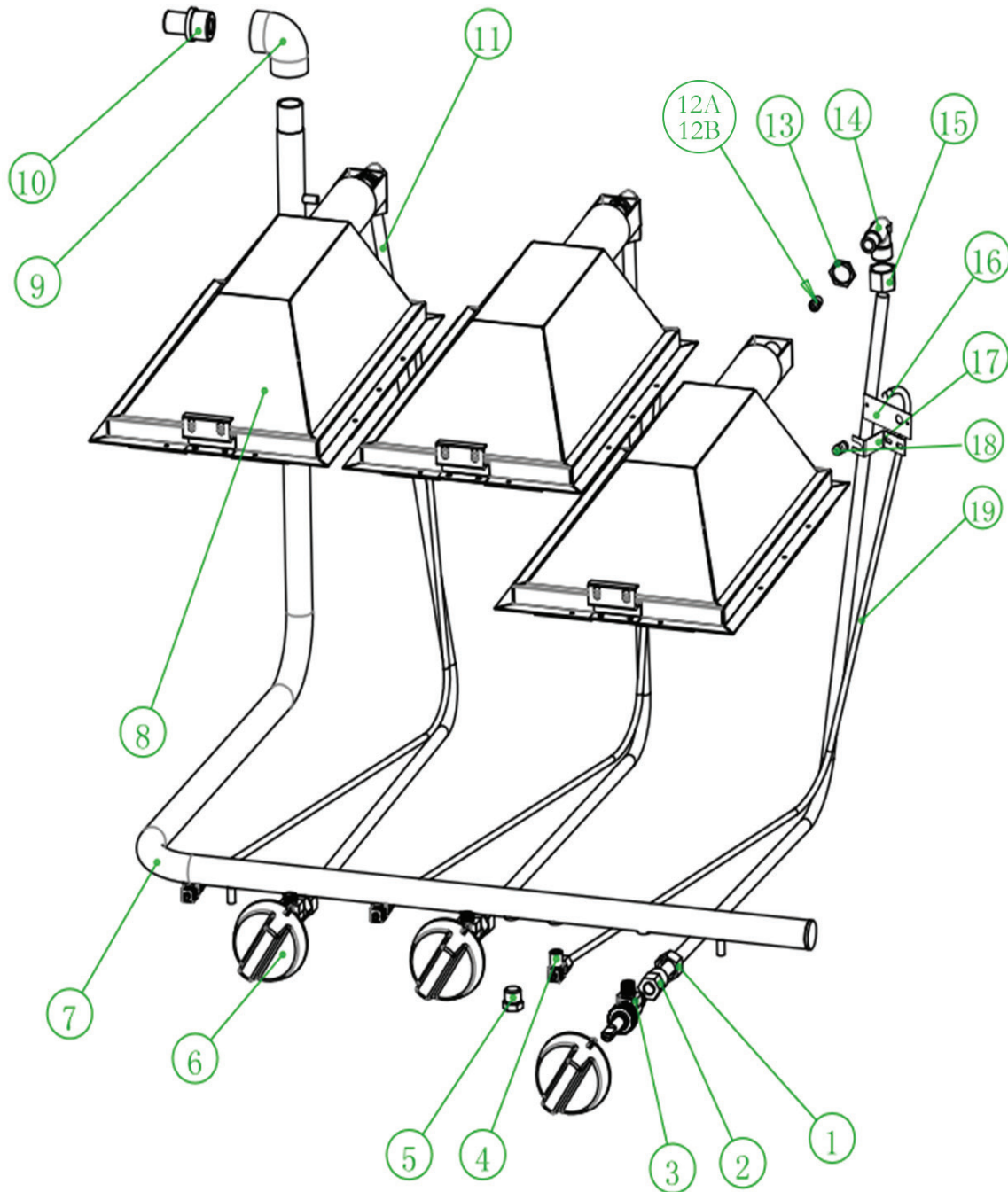
NOTE: * Part not shown in diagram.

Parts List: Lift Assembly

#	OUR ITEM #	DESCRIPTION	QTY
1	351201261	CLAW PLATE	1
2	351201273	STOP PIN	1
3	351080087	LOCKING TENSION SPRING	1
4	351201265	SLIDE BUSHING	1
5	351201259	SLIDE BUSHING BASE (RIGHT)	2
6	351201262	HANDLE STEM	1
7	351070161	HANDLE COVER	1
8	35134014005	RACK SUPPORTING ASSEMBLY	1
9	351110668	RACK	1
10	351201276	SCREW	1
11	351210038	NUT	8
12	35134014001	COVER PLATE ASSEMBLY (RIGHT SLIDE BUSHING)	2
13	351212221	SCREW	24
14	351201264	SLIDE SHAFT (LEFT)	1
15	351210057	NUT	8
16	35134014027	CONNECTING ROD	2
17	351080088	LIFTING TENSION SPRING	2
18	35134014004	ARM ASSEMBLY (LEFT)	1
19	351214197	BOLT	2
20	351213139	NUT	4
21	35134014007	LIFTING CHASSIS	1
22	351040286	CONNECTING SHAFT	1
23	351201263	SLIDE SHAFT (RIGHT)	1
24	351201274	SHAFT PIN	2
25	351214205	COTTER PIN	4
26	35134014003	ARM ASSEMBLY (RIGHT)	1
27	35134014008	CONNECTING PLATE (CHASSIS)	1
28	35134014031	PRESSING PLATE (SLIDE BUSHING)	2
29	351210295	SCREW	1
30	351201266	SHAFT PIN (OPERATING LEVER)	1
31	351213137	NUT	3

NOTE: * Part not shown in diagram.

Parts Diagram: Burner Assembly



NOTE: * Part not shown in diagram.

Parts List: Burner Assembly

#	OUR ITEM #	DESCRIPTION	QTY
1	351140057	CONNECTING NUT	3
2	351140170	ADAPTER	3
3	351220059	GAS VALVE	3
4	351220028	NG/LPG REGULATING VALVE	3
5	351200620	SCREW (TEST PLUG)	2
6	351110280	KNOB	3
	351110495	DIAL INSERT	3
7	351180679	GAS INLET PIPE	1
8	35134008008	BURNER ASSEMBLY	3
9	351060026	ELBOW	1
10	351140044	1/2 COPPER CONNECTOR (GAS INLET PIPE)	1
11	35134008055	CONNECTING PIPE (BURNER)	3
12A	351ORIFICE59	ORIFICE #59 - LP	3
12B	351ORIFICE52	ORIFICE #52 - NAT	3
13	351140058	FLAT NUT	3
14	351150100	CONNECTOR (ORIFICE)	3
15	351140025	NUT	3
16	35134014037	PILOT BRACKET	3
17	35134014038	PILOT BRACKET SHROUDING	3
18	351130019	PILOT	3
19	35134014023	GAS INLET PIPE (PILOT)	3

NOTE: * Part not shown in diagram.