



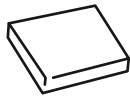
BOTTLE BRACKET Installation & Care Guide

#917N1BRACKET, #917N2BRACKET, #917N3BRACKET

KIT INCLUDES*

4

Double-Sided
Tape Pieces



4

Screws



4

Wall
Plugs



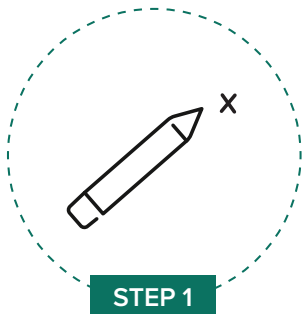
1

Key



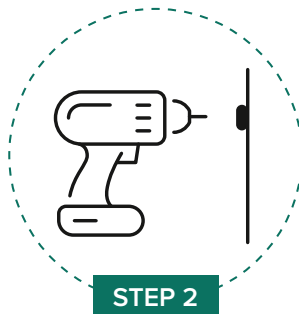
*917N1BRACKET only includes (2) Tape Pieces, (2) Screws, (2) Wall Plugs, and (1) Key

WALL INSTALLATION STEPS



STEP 1

Mark positions with
a pencil on the wall.



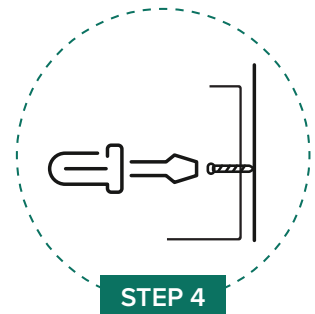
STEP 2

Drill the wall on the
designated locations.



STEP 3

Hammer the wall plug
into the drilled holes.



STEP 4

Place the bracket
against the wall and
screw into position.

If Using Heavy Duty Mounting Tape* Follow These Steps

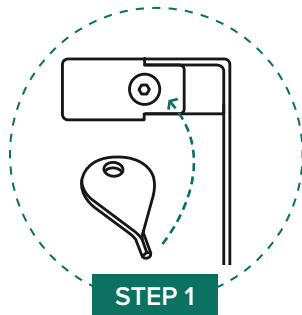
- 1) Thoroughly clean and dry both the mounting surface and the bracket where mounting tape will be applied.
- 2) Cut and apply heavy duty mounting tape horizontally, allowing for even distribution of weight.
- 3) Adhere heavy duty mounting tape to the bracket with double sided liner still affixed and press firmly to assure proper adhesion to the bracket.
- 4) Remove double sided liner and mount to surface. Press and hold firmly for at least 30 seconds.
- 5) Wait 24-48 hours before loading amenity bottles and using the bracket.

**Heavy duty mounting tape sold separately.*

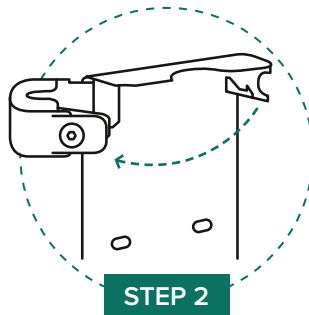


BOTTLE BRACKET Installation & Care Guide

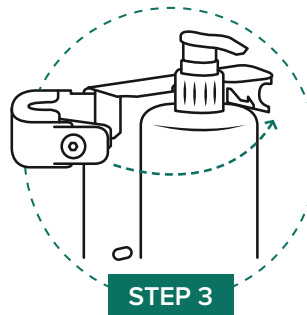
BOTTLE INSTALLATION STEPS



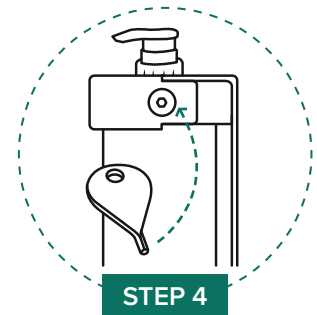
Use the key to open the bracket.



Pull the neck of the bracket open and ensure there is enough space to place the bottle(s).



Place the bottle(s) in the bracket and close it.



Use the key to lock the bracket.

CLEANING GUIDELINES

- Regular general cleaning of the bracket is recommended to prevent damage to surface coating and prevent corrosion or rust.
- The bracket is made of 304 stainless steel, coated with a protective coating.
- Brackets should be cleaned more regularly if hard water or salt water/air is present.
- Shampoos, body washes, and other hotel bath amenities left on the bracket for a long period of time could damage the protective coating.