

HERSHEY'S® Classic Syrup Dispenser

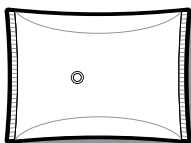
COMPLETE UNIT 87952

MODEL: SPPH

PUMP ONLY 88548

MODEL: BP-1

Used with Hershey's
64 oz pouches
with 16mm fitments.



Thank You

for purchasing this dispenser.
The reliable, reusable pump lasts for years
while the environmentally friendly pouch system
minimizes landfill impact.

CONSISTENT PORTIONS—SERVE BETTER

87952 DISPENSER PARTS

PUMP MODEL: BP-1
PUMP 88548

UNIT MODEL: SPPH
COMPLETE UNIT 87952

PUMP DELIVERS 1 OZ PORTIONS

To reduce portion, add optional
GAGING COLLAR(S)
onto side of head assembly

88313 Small collar: 1/8 oz reduction
88204 Medium collar: 1/4 oz reduction
88205 Large collar: 1/2 oz reduction

HEAD
ASSEMBLY
88545

DISCHARGE TUBE

LOCKING COLLAR

STOP COLLAR
88409

PISTON

SEAL ASSEMBLY
 (Seal & O-Ring) **83003**

PINCH VALVE
88202

SPRING
88166

CYLINDER
ASSEMBLY
88549

CAP
88016

CYLINDER
88553

STAINLESS STEEL BALL
1/2" DIAMETER
06022

(Ball snaps inside cylinder and can always remain installed, even during cleaning.)

FOOD EQUIPMENT LUBRICANT 40179

11" BRUSH 82049

21" BRUSH 82526

PUMP
88548

THREADED
INSERT
87956

LID
87955

LOWER
COLLAR
87957

VESSEL
WITH
DECAL
87958

DISASSEMBLY

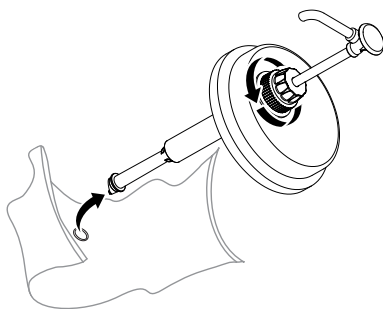
DISASSEMBLE AND WASH ALL PARTS PROPERLY BEFORE USE. See page 4.

During disassembly, collect small parts in a container to prevent loss.

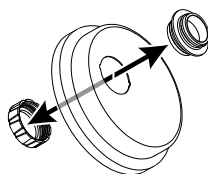
1 REMOVE LID, PUMP & POUCH from vessel.

2 DETACH POUCH from bottom of pump.

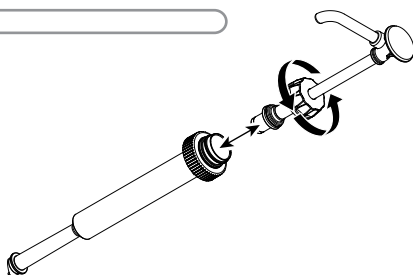
3 SEPARATE LID FROM PUMP
Unscrew cap from threaded insert in lid to remove pump.



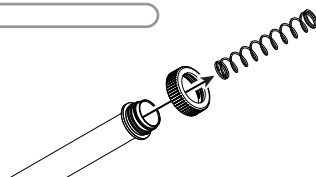
4 SEPARATE LID PARTS
Unscrew lower collar from threaded insert to release parts.



5 SEPARATE CYLINDER ASSEMBLY & HEAD
Loosen locking collar to release.



6 REMOVE SPRING & CAP FROM CYLINDER

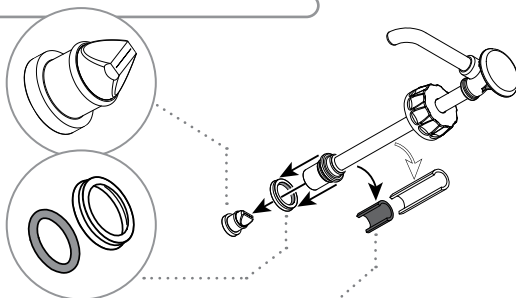


7 REMOVE PINCH VALVE from head assembly.

8 REMOVE SEAL from head assembly by pressing it down and off with thumb. Do not use a sharp tool.

9 REMOVE O-RING FROM SEAL

10 REMOVE STOP COLLAR & ANY GAGING COLLAR(S) if necessary for cleaning.



SAFETY



According to food and safety regulations, most foods must be stored and/or served at certain temperatures or they could become hazardous. Check with local food and safety regulators for specific guidelines.

Be aware of the product you are serving and the temperature the product is required to maintain. Server Products, Inc. cannot be responsible for the serving of potentially hazardous product.

IMPORTANT

Clean, rinse, sanitize, and dry parts daily or regularly to comply with local sanitization requirements.



NSF International lists this pump as:
"Not acceptable for dispensing potentially hazardous foods."

CLEANING

PUMP CLEANING

1 FLUSH & RINSE
all pump surfaces with hot water.
Place lower end of pump into container of hot water and operate pump until all remaining product is expelled and only hot water is discharged.

2 DISASSEMBLE & CLEAN
all washable parts with soap and hot water
(See DISASSEMBLY on page 3.)

USE SUPPLIED BRUSH

to thoroughly clean inside discharge tube and any confined areas.

3 RINSE
fully with clear water.

4 SANITIZE
all parts according to local sanitization requirements. All parts in contact with food must be sanitized.

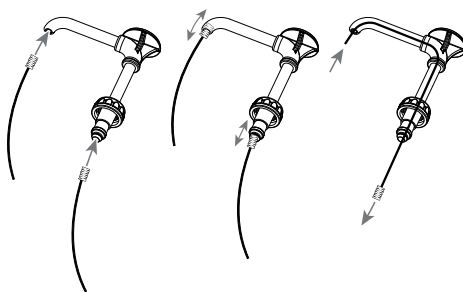
5 AIR DRY
all parts fully.

YES!

**Use dishwashing soap,
hot water
and nylon brush**



Pump & Lid are dishwasher safe.



VESSEL CLEANING

*Plastic Vessel may be wiped clean
with dishwashing soap & hot water.*

*Do not immerse in water.
Vessel IS NOT dishwasher safe.*

CLEAN-IN-PLACE PROCEDURE FOR PUMPS

1 CLEAN

- Pump out all (if any) remaining food product from inside pump body.
- Wash and rinse off outside of pump body.
- Flush out and rinse inside of pump.
- Place lower end of pump into container full of water and operate pump until all (if any) remaining product is expelled and only warm water flows from discharge tube.
- Mix 1 tsp (5 mL) of dishwashing detergent with 1 quart (.95 L) of hot tap water (approximately 110°F/43°C).
- Place lower end of pump into cleaning mixture. Pump until all cleaning mixture is expelled.

2 RINSE

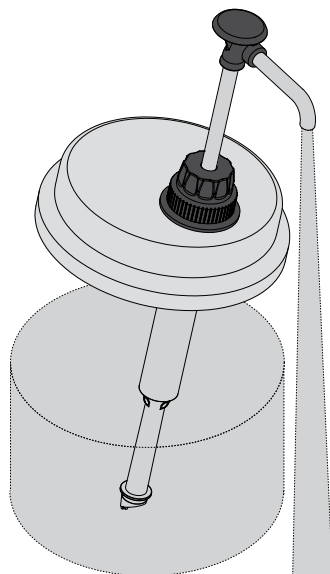
- Place lower end of pump into 2 cups (.5 L) of hot tap water (approximately 110°F/43°C) and pump until all tap water is expelled.

3 SANITIZE

- Mix one 1 oz (30 mL) packet of KAY-5 Sanitizer/Cleaner (EPA REG No. 5389-15) with 2.5 gallons (9.5 L) of tap water (approximately room temperature).
- Place lower end of pump into this sanitizing mixture and repeatedly operate pump until 1 quart (.95 L) sanitizing mixture is pumped through pump.

4 RINSE

- Place lower end of pump into 1 cup (.24 L) of hot tap water (approximately 110°F/43°C) and pump until all tap water is expelled.



CARE OF STAINLESS STEEL

This durable pump includes stainless steel components.

If you notice corrosion beginning on any stainless steel surface, you may need to change the cleansing agent, sanitizing agent, or the cleaning procedures you are using.

- A mildly abrasive nylon or brass brush may be used to remove any stubborn deposits.

- Fully rinsing and drying all parts can help prevent corrosion. Elements and minerals in tap water can accumulate on stainless steel parts and create corrosion.
- Do not use abrasive, caustic or ammonia based cleansers.
- Do not use products containing acids, alkalines, chlorine, or salt. These agents can corrode stainless steel.
- Do not use metal scrapers or cleaning pads that could scratch surfaces.

ASSEMBLY



PRACTICE SAFETY. WASH ALL PARTS PROPERLY BEFORE USE. See page 4.

- 1** INSTALL O-RING into seal.
Apply food equipment lubricant on O-ring

- 2** INSTALL SEAL onto head assembly piston.
Apply small amount of food equipment lubricant inside seal.
TIP: Flared end of seal should face away from piston head.

- 3** INSTALL PINCH VALVE
TIP: Squeeze the pinch valve open before installation to ensure it isn't stuck shut.
Install pinch valve into bottom of piston.
Press pinch valve securely to seal end.

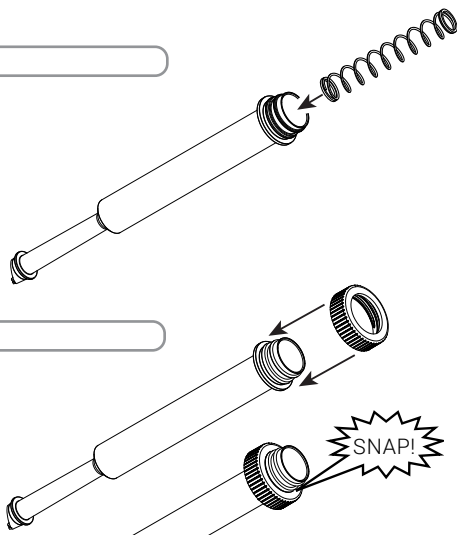
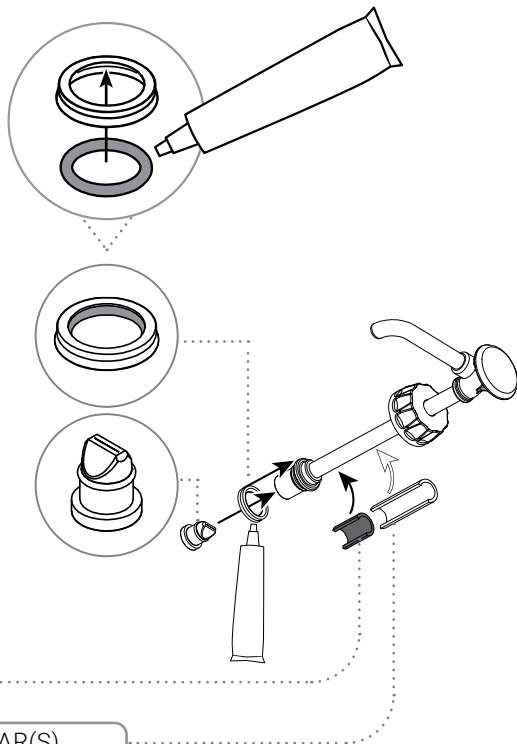
- 4** INSTALL STOP COLLAR onto side of head assembly piston.

OPTIONAL: ADD GAGING COLLAR(S)

to reduce portion size.
Small collar: 1/8 oz reduction
Medium collar: 1/4 oz reduction
Large collar: 1/2 oz reduction

- 5** INSERT SPRING INTO CYLINDER

- 6** SNAP CAP ONTO CYLINDER
Press firmly to secure cap down over all threading on cylinder.

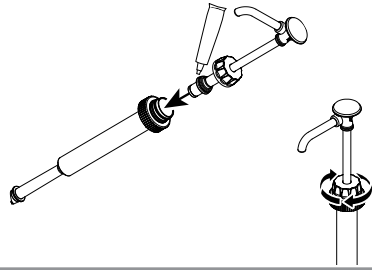


7 INSTALL HEAD ASSEMBLY INTO CYLINDER

Apply a small amount of food equipment lubricant to the outside of seal.

Slide locking collar down onto cylinder threading.

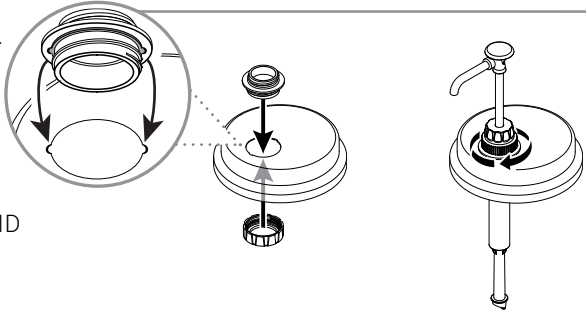
Tighten firmly to secure head assembly to cylinder.



8 PREPARE LID

Fit threaded insert into lid hole.

Screw lower collar onto threads that descend below lid hole.

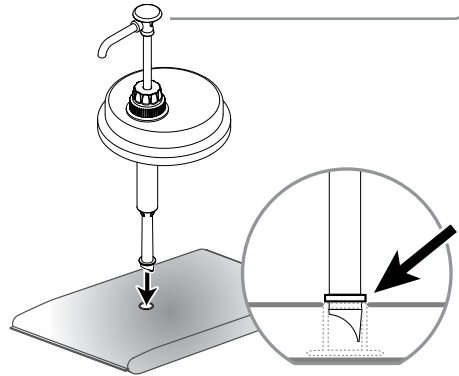


9 SECURE PUMP INTO LID

Tighten cap very firmly onto top of threaded insert.

10 ATTACH PUMP TO POUCH

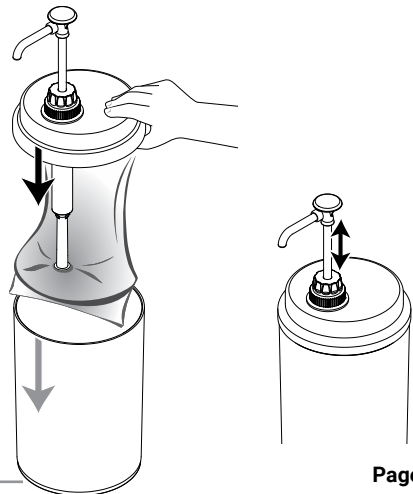
- Place pouch on countertop with pouch fitment circle facing upward.
- Position pump connector directly over center of pouch fitment.
- Press pump connector down to pierce through film in pouch fitment.
- Pump connector is fully engaged when top surface of pouch fitment touches pump connector rim.



11 INSERT PUMP, LID & POUCH COMBINATION INTO VESSEL

12 PRIME PUMP

Press pump several times until any air bubbles are eliminated and only product is dispensed.



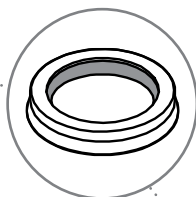
TROUBLESHOOTING

PRODUCT OOZES OUT FROM LOCKING COLLAR?

- Check the seal.

TIP: Seal has a slight taper.

Install with flat side towards top, flared side down.

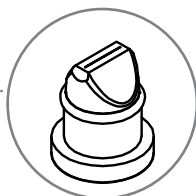


INCONSISTENT PORTIONS?

- Clean pump.
- Ensure product container is not empty and has **enough product** to pump.

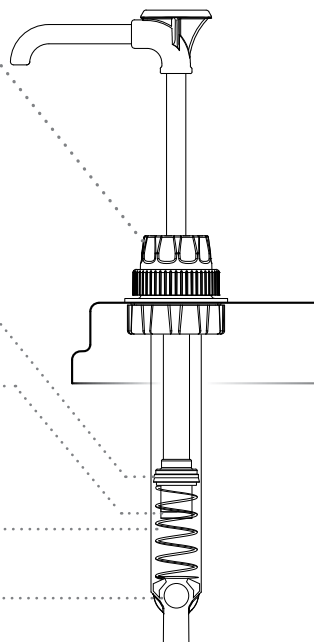
- Ensure **pinch valve** is installed correctly.

TIP: Squeeze the pinch valve open before installation to ensure it isn't stuck shut.



- Ensure that the **spring** is functional. Replace broken spring if necessary.

- Ensure that the **stainless steel ball** is snapped in place below tabs.



SERVER PRODUCTS LIMITED WARRANTY

2 YEAR
WARRANTY

This Server product is backed by a two-year limited warranty against defects in materials and workmanship. See Server-Products.com for details.

GENERAL SERVICE, REPAIR OR RETURNS

Before sending any item to Server Products for service, repair, or return, contact Server Products customer service to request a **Return Authorization Number**. Merchandise must be sent to Server Products with this number. Service is extremely prompt. Typically, units are repaired and ship out within 48 hours of receipt.

Merchandise being returned for credit must be in new and unused condition and not more than 90 days old and will be subject to a 20% restocking charge.

NEED HELP?

Server Products Inc.

3601 Pleasant Hill Road
Richfield, WI 53076 USA

Chat with us!

spsales@server-products.com

262.628.5600 | 800.558.8722

Please be prepared with your **Model, P/N** and **Series** located on the lid or base of the unit.

Example:

