



INSTRUCTION MANUAL



READ ENTIRE MANUAL BEFORE USE



WET/DRY VACUUM CLEANER #944BJ16235G

09/2020

COMPONENTS AND USE INSTRUCTIONS

HANDLE

After releasing clips, vacuum head can be lifted off of the unit by the handle.

SWITCH

“o” represents power off
“-” represents power on.

CLIPS

Press clips inward to release head from vacuum body.

CONNECTION

Insert hose connector into the suction mouth, and rotate about 90° to lock tightly.

CORD STORAGE

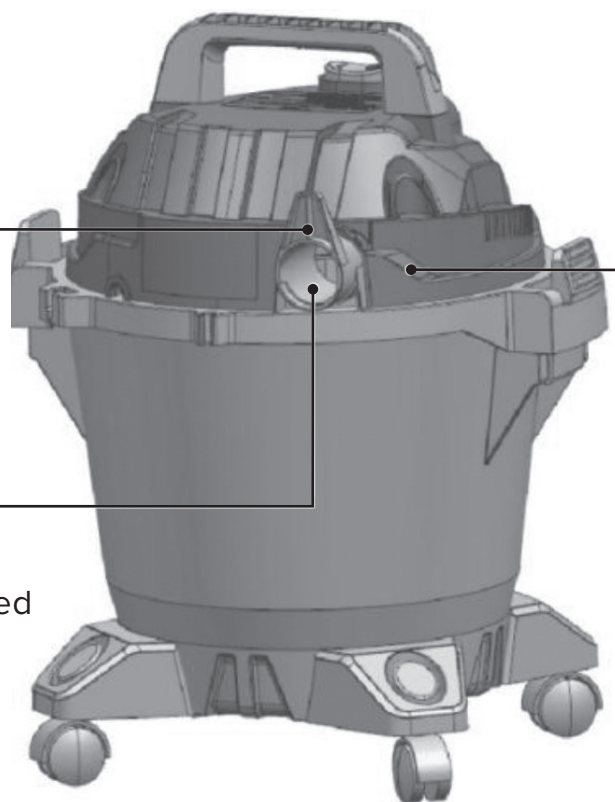
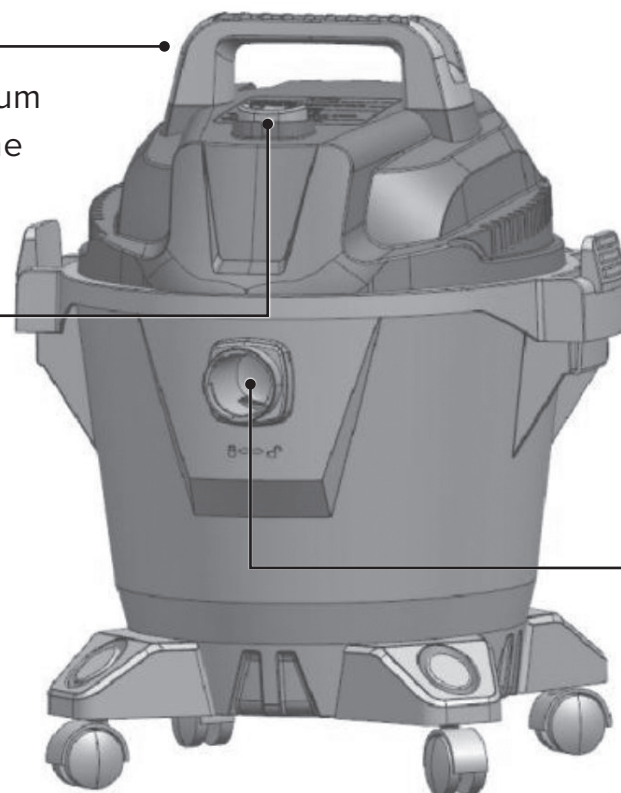
Power cord can be conveniently stored in the indicated location.

ACCESSORIES

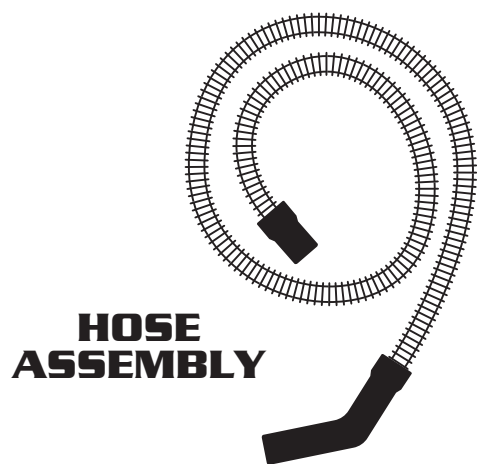
Accessories can be stored here.

BLOWING FUNCTION

Connect hose into indicated mouth and tighten. Make sure that hose is clear of blockages before attempting to use this function.



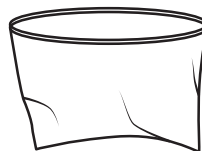
PART DESCRIPTIONS



**HOSE
ASSEMBLY**



WANDS



**CLOTH
FILTER**



**FLOOR
BRUSH**



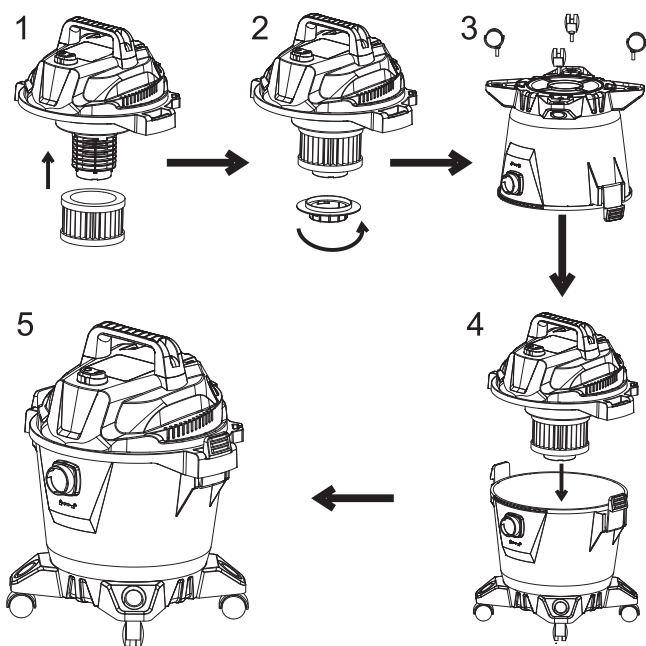
**DUST
BRUSH**



**CREVICE
TOOL**

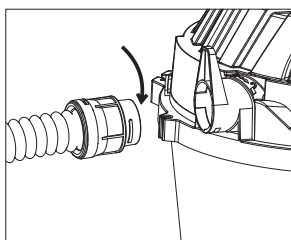
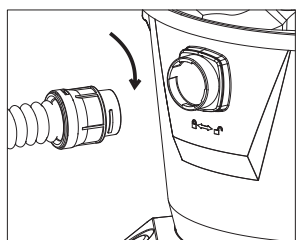
USAGE INSTRUCTIONS

ASSEMBLY



- 1) Attach the filter to the top cover.
- 2) Attach the wheels to the base.
- 3) Place the top cover onto the base.
- 4) Clip into place with tank locks.

HOSE CONNECTION



- 1) Insert hose connector into inlet and ensure that the connector is fastened tightly.
- 2) Loosen the screws on the handle to adjust height, tighten once set.

FILTER DISASSEMBLY (HEPA)



Pull clips outward to remove vacuum head.



Turn the bottom cover of the filter clockwise, then remove the filter.



Wash filter and dry thoroughly before use.



Return the filter to its housing, and turn counterclockwise to lock the filter in place.

FILTER DISASSEMBLY (CLOTH)



Take off the machine head.



Take off the cloth filter.



Wash filter and dry thoroughly before use.



After clean and dry, put the filter and head back.

INSTRUCTIONS AFTER USE



1) Turn off the switch.
“o” represents power off
“-” represents power on



2) Unplug unit and store cord to avoid damage.



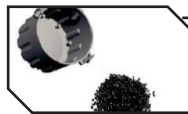
3) Remove hose and brush, clean dust and remove blockages.



4) Remove vacuum head.



5) Clean out tank and dry with a soft cloth.



6) Take off the filter, wash and dry it for next use.

SAFETY INSTRUCTIONS

Please observe the following safety instructions to avoid personal injury and property loss.

- 1) Do not vacuum items that are flammable, or on fire to avoid potential motor malfunction or explosion.
- 2) Do not use when plug or cable is damaged *(to avoid causing fire because of overheating)*.
- 3) Do not wash motor or suction components with water.
- 4) Do not use in damp environments.
- 5) Do not attempt to disassemble or repair unit without consulting a designated repair center to avoid damage or injury.
- 6) Not for use by children without supervision.
- 7) Ensure that hands and body parts that come in contact with power cord are dry at all times.
- 8) Do not move unit when vacuum head clips are unlocked.
- 9) Keep a proper distance away from fire/heat source or sunlight.
- 10) Do not use when plug or power cord are damaged to avoid electric shock or fire hazards.
- 11) Ensure that plug is securely inserted into power socket during use to avoid electrical shock or fires.
- 12) Use AC socket separately to avoid fire hazards.
- 13) Always unplug unit before performing maintenance.
- 14) Regularly clean dust from plug to avoid insulation issues and fire hazards.
- 15) Ensure that filter is securely installed during use to avoid motor malfunction or fire hazards.

IN CASE OF THE FOLLOWING WARNING SIGNS, TURN POWER OFF AND UNPLUG UNIT IMMEDIATELY

- Unit stops working without obvious reason.
- Any component is noticeably warped or misshapen.
- Electricity is not consistently flowing to unit.
- Hose is punctured or damaged.
- Burning smell.
- Unit suddenly loses power.
- Loud or unusual noises being made.

OPERATING PROCEDURES

Follow procedures below in order to extend vacuum life.

- 1) In order to avoid unit failure or odors, avoid collecting the following things:
 - Large quantities of powder - Construction waste, fire extinguisher powder, etc.
 - Bodily fluids and excrement
 - Sharp objects - Screws, nails, glass, needles, etc.
 - Cloth and fiber-based items that may cause blockages - clothing, rope, etc.
- 2) Do not pull or bend hose to avoid damage.
- 3) Avoid use for over 30 minutes at a time to avoid potential overheating or reduced lifespan.
- 4) Do not operate unit when tank is full or when filter is blocked to avoid malfunction or reduced motor life.
- 5) Please use the floor brush or crevice nozzle etc.
- 6) Do not operate unit when air outlet is blocked to avoid overheating or warping.
- 7) Please check whether the cloth or HEPA filter was installed before using. *(Do not operate unit without filter in place to avoid waste being sucked into the motor)*

TROUBLESHOOTING

| Problem | Areas to Check | Solutions |
|--------------------------------|---|--|
| VACUUM DOES NOT POWER ON | <ol style="list-style-type: none">1) Ensure that plug is inserted in socket tightly2) Ensure that power is running to the socket | <ol style="list-style-type: none">1) Re-insert the plug into the socket tightly2) Ensure the socket is powered on |
| REDUCED SUCTION POWER | <ol style="list-style-type: none">1) Check for blockages in vacuum hose and tube2) Check for buildups or blockages in filter3) Ensure that vacuum head is fastened tightly to body4) Check for blockages in air outlet filter5) Ensure that the hose lock is closed and secured | <ol style="list-style-type: none">1) Clear any blockages or buildups2) Clean or replace HEPA filter as necessary |
| LOUD/UNUSUAL NOISES BEING MADE | <ol style="list-style-type: none">1) Check for buildups or blockages in filters2) Check for buildups or blockages in the vacuum hose or wand | <ol style="list-style-type: none">1) Clean or replace filter as necessary2) Clear any buildups or blockages |

NOTICE: This product should not be disposed with other household wastes. To prevent possible harm to the environment or human health from uncontrolled waste disposal, recycle it responsibly to promote the sustainable reuse of material.



PROTECTIVE DEVICE INSTRUCTIONS

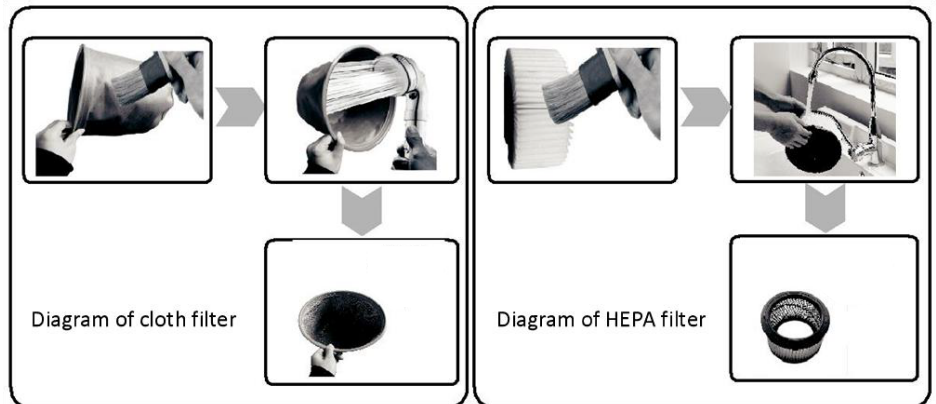
Special instructions concerning protective device

- 1) Protective device begins to work when water tank is full. Suction will be turned off, and an indication sound will occur. If this happens, electricity should be cut off, and water should be drained. After water is drained, the unit will return to normal operation.
- 2) Ensure that power is turned off and vacuum head is removed before tipping over unit to empty.
- 3) Protective device will raise and suction power will stop when tank is full. When this occurs, turn power off immediately and empty the unit before continuing.

MAINTENANCE

Always turn off power and unplug unit before emptying and cleaning.

- 1) Use brush to clean dust from filter.
- 2) Run water through filter from inside to outside for most thorough clean.
- 3) Air dry filter in a well ventilated location. After completely dry, store for next use.



NOTE: After washing

- 1) Be sure to thoroughly dry filter in order to avoid blockages or odors.
- 2) Do not dry with hot air to avoid bending or warping.
- 3) Do not use detergent/bleach/thinner/alcohol etc.
(to avoid causing cracks and fading color)

TECHNICAL DATA

| Item # | Wattage | Voltage |
|-------------|---------|----------|
| 944BJ16235G | 1200W | 100-120V |

