



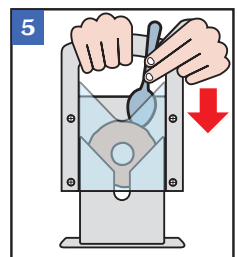
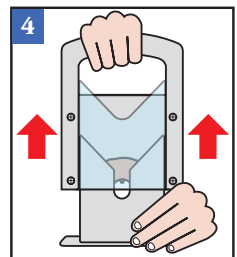
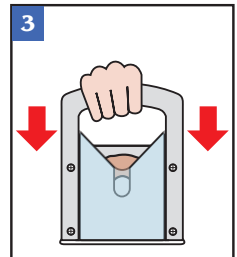
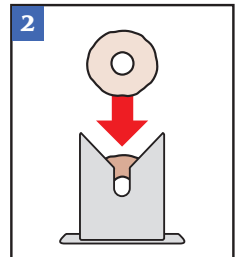
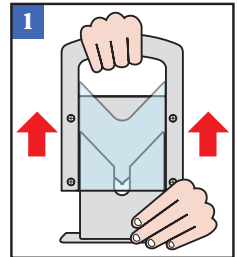
THE ORIGINAL BAGEL GUILLOTINE®

COMMERCIAL USE & CARE INSTRUCTIONS

Please read all the information in this instruction sheet before using the Bagel Biter®.

Although the Bagel Biter® makes cutting bagels simple, safe and speedy, we urge caution. THE BLADE IS EXTREMELY SHARP!

- 1) Remove the handle portion of the Bagel Biter® from the base by grasping the top of the handle with one hand and holding down the base with the other hand. (See illustration #1).
- 2) Place the bagel in the base. (See illustration #2).
- 3) Position the handle portion of the Bagel Biter® directly over the base, with the blade pointing downward. The handle will "sleeve" over the base. Push straight down until the handle portion meets the base. (See illustration #3).
- 4) Holding the bottom of the base with one hand, lift the handle portion up. (See illustration #4).
- 5) Remove your perfectly sliced bagel from the base. If a bagel sticks in the handle portion use a wooden or plastic utensil to push down on the bagel from the top. (See illustration #5). NEVER REACH INTO THE HANDLE PORTION FROM THE BOTTOM! THE BLADE IS EXTREMELY SHARP!



RECOMMENDATIONS

- Never slice frozen or stale bagels as they will dull the blade. Slice bagels BEFORE you freeze them and thaw frozen bagels before slicing them.
- Clean blade often to prevent sticking and to prolong blade life.
- Steamy, moist or "sticky" bagels may compress or squash during slicing; allow steamy bagels to cool off. Popping a moist or sticky bagel into a toaster oven for a few seconds will insure easiest slicing.
- Flavored bagels (raisin, onion etc.) can leave a sticky residue on the blade. Regular cleaning allows the Bagel Biter® to work at maximum efficiency. Acid from some ingredients may stain, but occasional staining or scratches will not affect performance.
- Disassemble frequently to clean properly.

CLEANING INSTRUCTIONS

To clean your bagel slicer by hand, use a bottle brush and warm soapy water. Soaking in an appropriate cleaning solution overnight can aid greatly in the ease of cleaning. DO NOT scour with metal pads, steel wool or abrasive cleaners. NEVER REACH INTO THE HANDLE PORTION. THE BLADE IS EXTREMELY SHARP!

! The Commercial Bagel Biter® has been designed to be cleaned in most commercial dishwashers. Due to the unpredictable combinations of temperatures, cleaning agents and washers, we cannot guarantee that it is compatible for washing under ALL commercial scenarios. ANY CONTACT OF THE BLADE WITH ANYTHING HARDER THAN A BAGEL CAN GREATLY DECREASE THE LIFE EXPECTANCY AND EFFICIENCY OF THE BLADE. If you encounter any problems or have any questions please call us at: 800.462.9237.

LARIEN
P R O D U C T S

TEL 800.462.9237

website: www.larien.com

© 2010 Larien Products

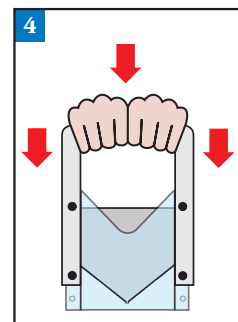
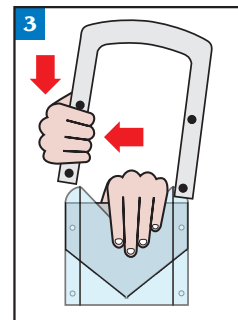
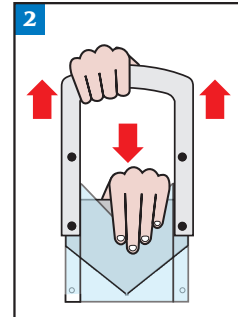
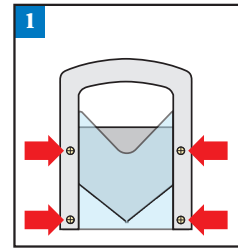
COMMERCIAL SMARTBLADE REPLACEMENT CARTRIDGE

! You will need 2 Phillips head screwdrivers for disassembly and reassembly. **CAUTION:** place locking bolts safely away from food during replacement operation.

1) Place the Commercial Bagel Biter Plus® on a sturdy flat surface. Unscrew and remove all four fasteners, and put in a safe place for reassembly. (See illustration #1).

2) Place hand through handle and on top of the SmartBlade® cartridge (exercise care when pushing down on the TOP of the blade, though not sharpened it is still worthy of caution). Push down on the cartridge while pulling up on the handle to remove old cartridge. (See illustration #2). Please dispose of old SmartBlade® cartridges in a safe and responsible fashion. (See illustration #2).

4) Center handle and push downward until locking bolt holes (handle and cartridge) line up. Replace ALL locking bolts and tighten firmly. (See illustration #4).



LARIEN
P R O D U C T S

TEL 800.462.9237
website: www.larien.com

© 2010 Larien Products