

# Installation Guide

---

## Kit - Pump Conversion (KPMP)

---

**Use these instructions to convert an existing sealed pump drain system to a condensate pump drain system.**

**Needed for installation: scissors, marker, sheet metal snips or grinder, zip ties**

**NOTE:** Prior to beginning installation, the machine must be unplugged and water to the machine should be shut off.

1. Remove rear panel and side access panel.

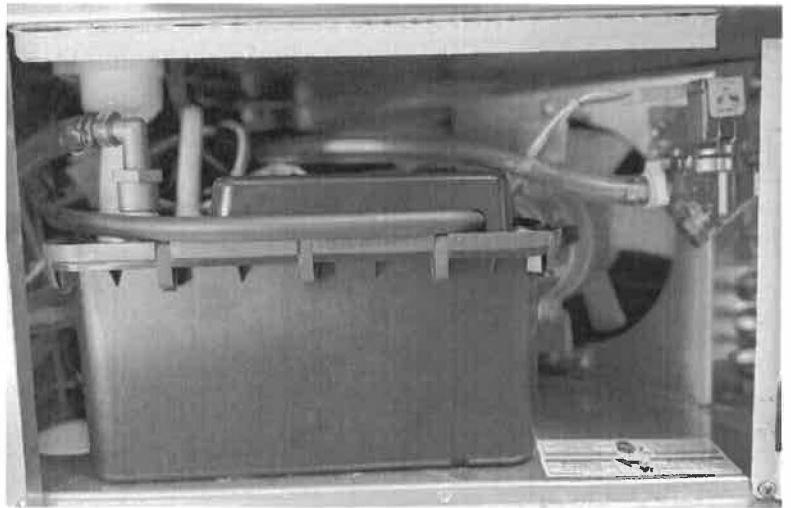
2. Unplug power cord and main harness.

3. Plug in the sub harness into the pump harness.

4. Install Brass 90 to the top of the pump.

5. Remove liner from double sided tape (located on the bottom of the pump). Place pump in the bottom of the machine as pictured.

6. Connect power cord and main harness into pump harness.



7. Connect white drain tube to bottom of the bin. Add white clamp.

8. Install the white tube on to the vent of the pump. Route vent tube towards to the top of the machine. Use zip ties to secure vent tube.

9. Reinstall back panel and side access panel.

10. Route 3/8th drain tube through utility panel and connect to brass barb on pump.

11. Use hose clamp to secure hose.

12. Route drain tube to customers drain.