

OPERATING AND MAINTENANCE INSTRUCTIONS

(Read the entire sheet carefully and retain for future reference)

If you purchased an add-on kit (ie Deep Top, All Directional, Stock Picking, etc.), be sure to read ALL instruction packets prior to any assembly.

LADDER INSPECTION

- Upon receipt, inspect each unit immediately for damage incurred during shipping. If damage has occurred, sign for ladder as DAMAGED, contact the freight carrier and the manufacturer immediately. **DO NOT USE LADDER.**
- Inspect all ladders prior to each use, any ladders damaged or weakened from any cause **SHALL NOT BE USED** until repaired or replaced. Ladders damaged or worn beyond repair shall be destroyed. **NEVER** climb a damaged ladder.
- If assembly is required, ensure all bracing is properly fitted.
- Ensure that all rubber tips are installed on all legs. Replace all tips that are worn.
- Check brake mechanism. All legs must rest firmly on the floor before climbing.
- Ensure all fasteners are properly tightened.
- Missing or worn labels must be replaced; please contact the manufacturer.

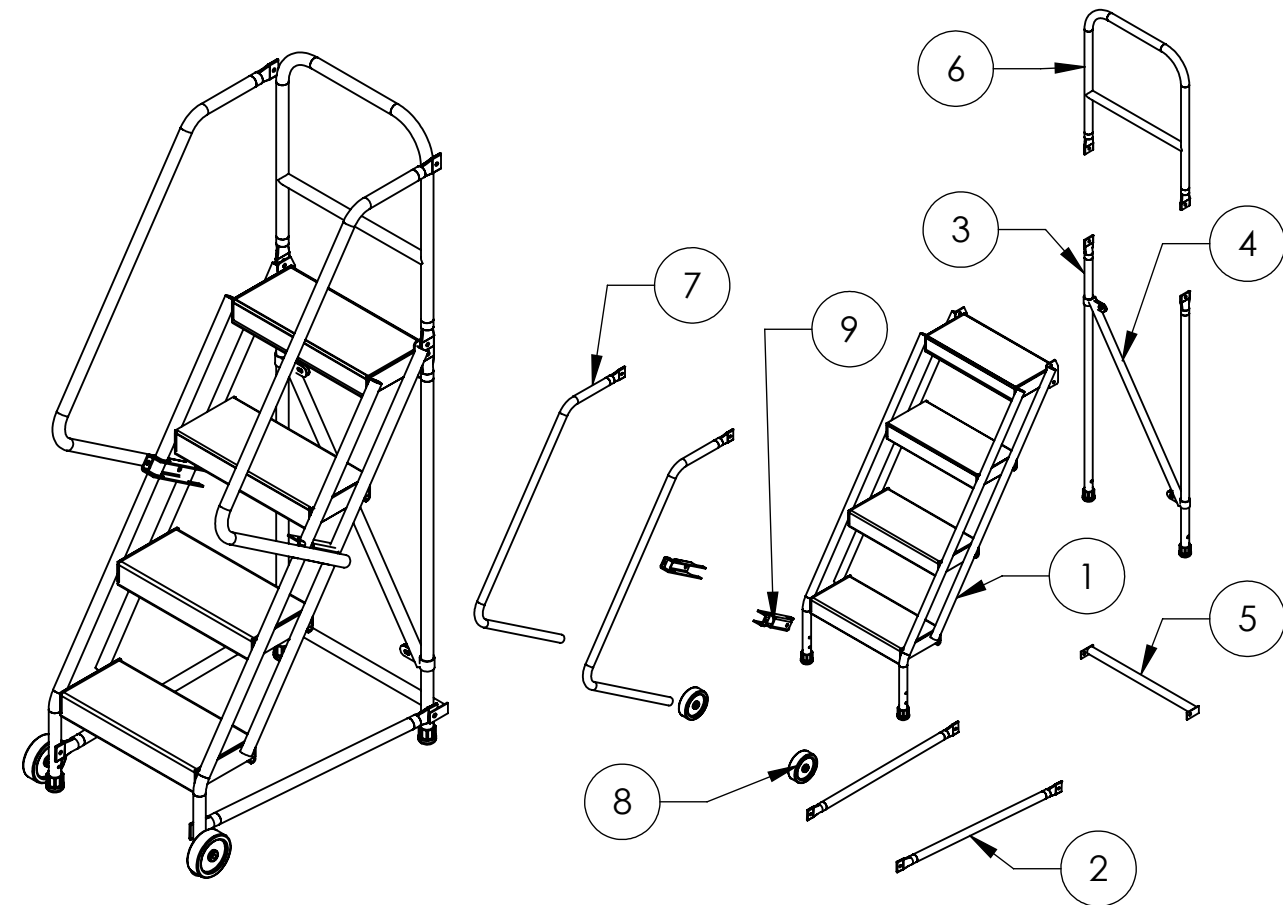
LADDER USE

- All employees shall be instructed by employer in the proper use of the unit, and shall read the operating instructions before being allowed to use any unit.
- Employees must read and obey all instruction labels attached to the unit.
- Units must not be loaded beyond the weight marked on the label.
- The user shall face the ladder and use the handrail when ascending or descending. Overreaching while on a unit could cause instability and result in a fall.
- Additional height shall not be gained by the addition of any type of extension or object being placed on the unit.
- Do not stand on railing or top guardrail. The user shall not ascend farther than the top step.
- Foreign material such as grease shall be removed from shoes prior to ascent of a unit.
- Access to or egress from any step or platform from any other elevated surface shall be prohibited unless the unit has been positively secured against any movement.
- **DO NOT USE** ladder when occupied.
- **DO NOT USE** near open electrical circuits; contact with an energized circuit or conductor will cause an electrical shock.
- **DO NOT USE** in front of a door unless the door is secured in an open position, locked or guarded.
- **DO NOT USE** on an uneven or sloping surface; units are to be used on a flat level surface.
- **DO NOT USE** if you tire easily, are subject to fainting spells, use medicine, alcohol, or are physically handicapped.

GENERAL GUIDELINES

1. It shall be the responsibility of all users to read and comply with the following general safety guidelines, which are designed to promote safety in erecting the ladder.
2. This ladder is designed for use on a flat level surface. Inspect all equipment before using. Never use equipment that is damaged or defective.
3. Survey the job site for hazards for high tension wires, electrical circuits, unguarded openings, and other hazardous conditions.
4. As a general rule tighten all bolts and nuts with hands, then flip the stringer onto the bottom assembly and tighten with a 1/2" socket wrench before attaching wheels.
5. Use a 1/2" socket wrench to TIGHTEN ALL NUTS.

KDTF (ALL MODELS) ASSEMBLY INSTRUCTIONS



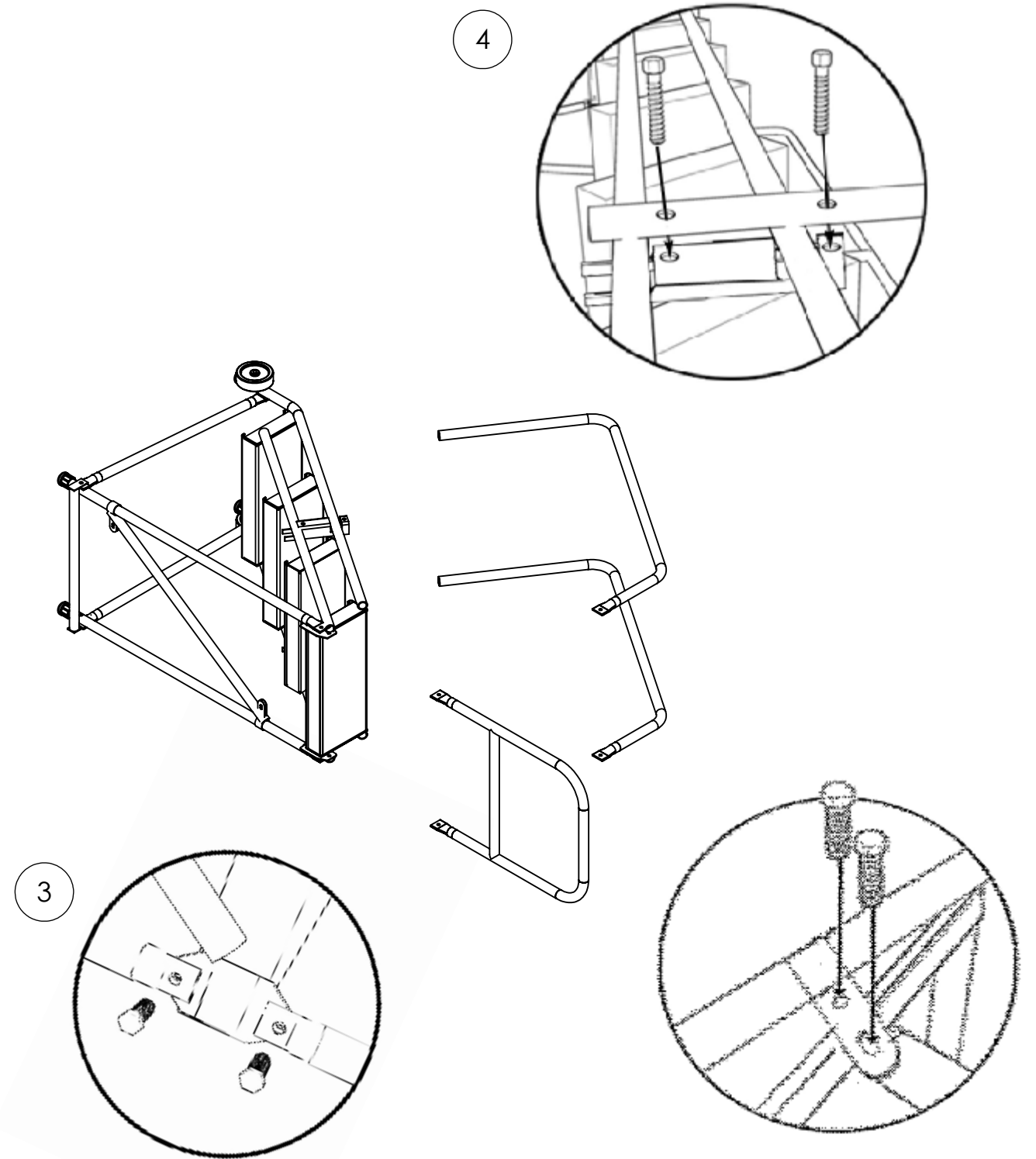
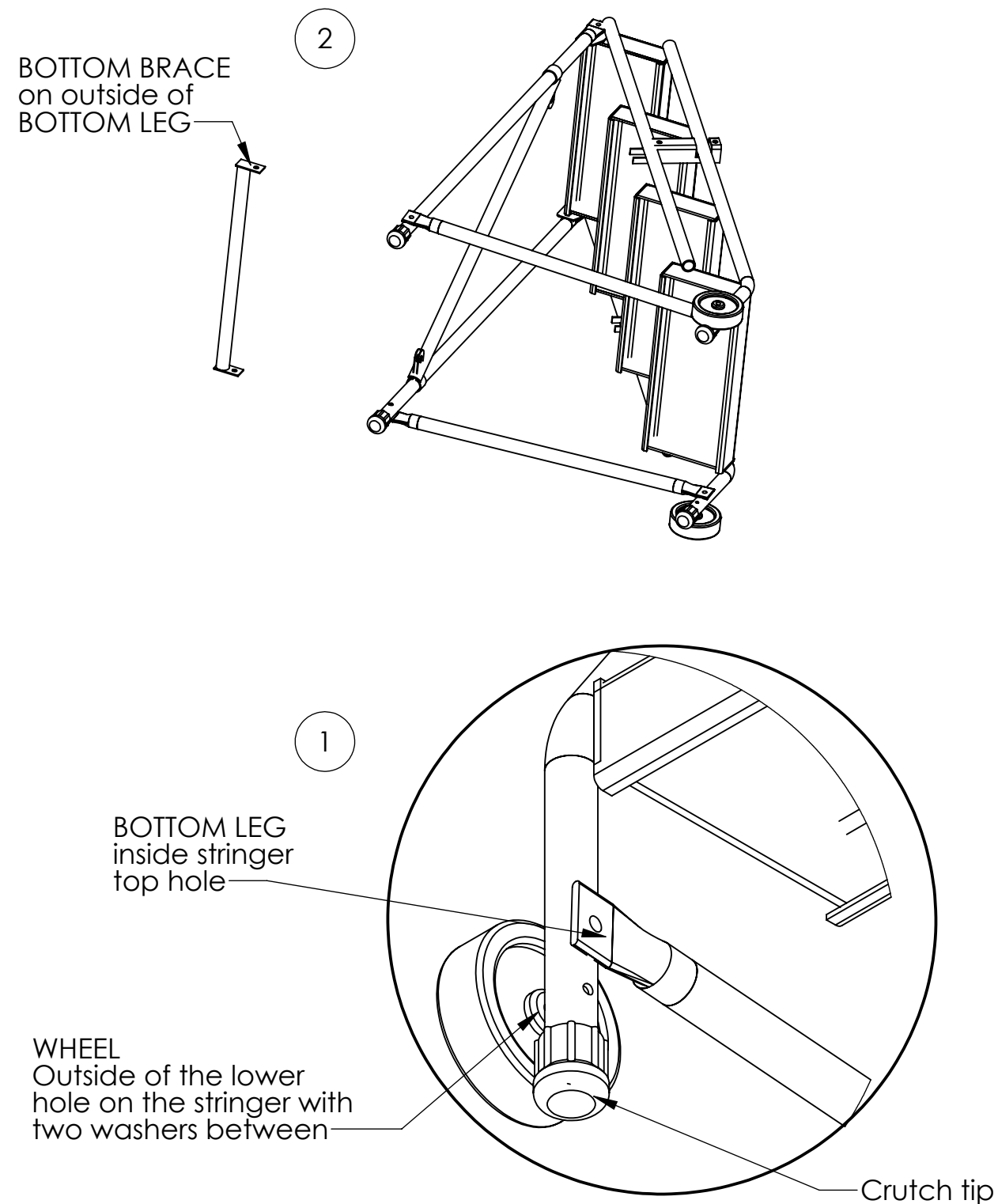
Components		
Part #	QTY	DESCRIPTION
1	1	STRINGER ASSEMBLY
2	2	BOTTOM LEG (NO SOCKETS)
3	2	BACK VERTICALS (ATTACHED)
4	1	SUPPORT TUBES (3-5 STEP)
5	1	BOTTOM BRACE
6	1	GUARDRAIL
7	2	HANDRAIL
8	2	WHEELS (IN FASTENER PACK)
9	2	HANDRAIL CLAMPS (IN FASTENER PACK)
10	2	SUPPORT TUBE CLAMP (IN FASTENER PACK)
11	2	BOLTS (IN FASTENER PACK)
12	4	WASHER (IN FASTENER PACK)
	1	FASTENER PACK

CAL-OSHA GUIDLINES

If you are using this ladder in California, you must order a 42" guardrail. GRCAL05EC (16" wide ladders) or GRCAL0509 (24" wide ladders)

Tools Needed For Assembly

Utility Knife, 1/2" Socket Wrench, 1/2" Open End Wrench, Hammer



Assembly

1. Place the stringer assembly on a firm working surface. (Note back vertical tubing is already attached to the stringer). First attach a BOTTOM LEG to the inside of the STRINGER in the upper hole (see Figure 1)
2. After BOTTOM LEG is attached to stringer, attach BACK VERTICAL and BOTTOM BRACE to the BOTTOM LEG on the other end (See Figure 2). The BOTTOM BRACE is on the outside, with the BOTTOM LEG between the BOTTOM BRACE and BACK VERTICAL. Repeat for both sides.
3. Attach the guardrail to the stringer (See Figure 3)
4. Attach the handrail to the guardrail using the 1-1/2 long bolts hand tighten the bolts and nuts to the handrail in the top and middle hole on the outside of the guardrail. At the other end of the handrail, sandwich the stringer tube between the handrail and the outside of the handrail clamp on the inside (See Figure 4)

5. Attach the WHEEL to the stringer. Place the bolt into the bottom hole on the stringer, just below where the BOTTOM LEG was bolted. Slide two washers in between the wheel and the stringer tube on the outside of the tube then slide the wheel onto the bolt. Tighten the nut to the outside of the wheel (See Figure 1 & 2)
6. Repeat for both sides of the stringer assembly and hand tighten all nuts.
7. Flip the ladder assembly upright and square ladder then tighten all nuts with a wrench.
8. When installing the crutch tips, ensure that a washer is inside the tip, and then slide the crutch tips over the ends of the round tube. (See Figure 1)
9. Press the plastic plugs into the ends of the tube on the top step.