

HANDLING CHECK LIST

- Always follow recommended tapping instructions.
- Don't use iPump as a handle to lift or move keg.
- Always use keg handles when lifting keg.
- Do not roll or drop keg as this will agitate the beer and cause unnecessary foam.
- Avoid over pumping. Pump only enough to maintain desired flow.
- When dispensing beer, open the faucet completely. Partially opening the faucet will cause foam.
- Draft beer must be kept cold at all times. Recommended temperature is 36°F – 40°F.



MAINTENANCE

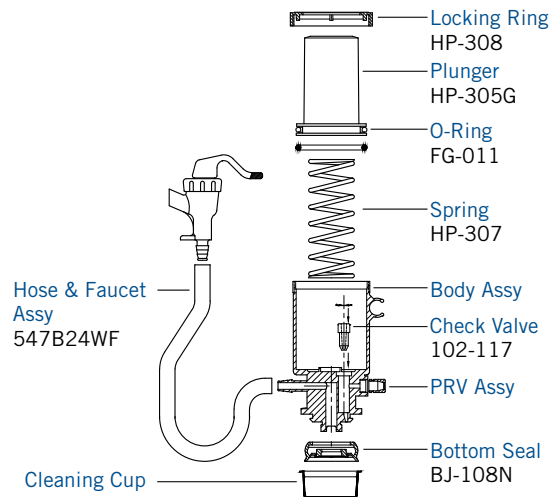


The iPump is designed for years of service. Simple cleaning is required after every use.

Periodically the o-ring at the base of the plunger requires slight lubrication*. The lubrication will allow movement of the plunger when pumping. **DO NOT OVER LUBRICATE** the o-ring as this will affect pumping.

*Use only FDA approved silicone lubricant.
Micro Matic part number FT101L.

PARTS LIST



MICRO MATIC

Micro Matic USA, Inc.
www.micromatic.com
866-291-5756

Lit No. 01255-D1212i © Micro Matic USA, Inc.



MICRO MATIC



USE & CARE

TAPPING A KEG

- 1 Wet base of iPump with water.
- 2 Depress pump plunger, align notches in base of iPump with lugs located in the top of the keg valve.
- 3 While holding firmly in a vertical position, press pump body down into keg valve. Look out – you may get a little beer spray as the pump is engaging the keg.
- 4 Rotate the pump body a quarter turn clockwise to engage the keg lugs. This locks the pump in place and opens the keg valve.



CLEANING

After each use the iPump is easily cleaned following these steps:

- 1 Fill bucket with clean fresh cold water, and attach cleaning cup.
- 2 Open faucet, and place opening over bucket. Hold cleaning cup in place, submerge iPump in water.
- 3 Pump sufficiently to allow steady stream to flow through hose and faucet. This will rinse away any beer remaining in the hose. Remove iPump from water.
- 4 Disassemble by unscrewing and removing locking ring. Rinse inside of pump body with clean water. Dry all parts thoroughly. Inspect plunger o-ring for any damage. Clean o-ring groove. Lubricate o-ring with a light coat of lubricant and re-install in groove.
- 5 Reassemble parts; tighten lock ring snugly, do not over-tighten.

