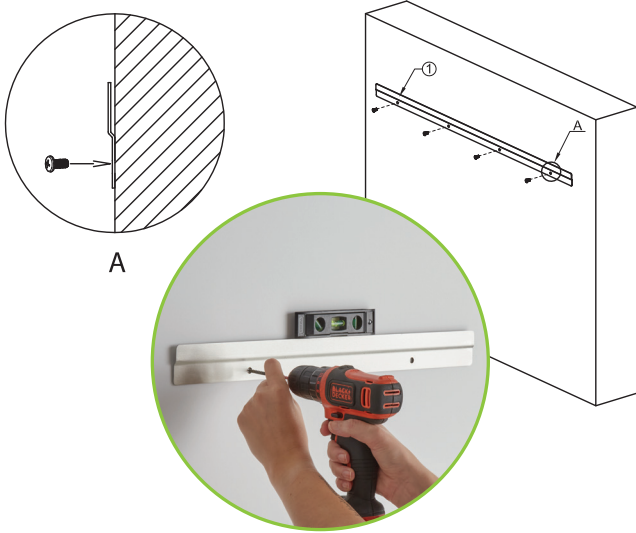


# REGENCY WALL CABINET ASSEMBLY

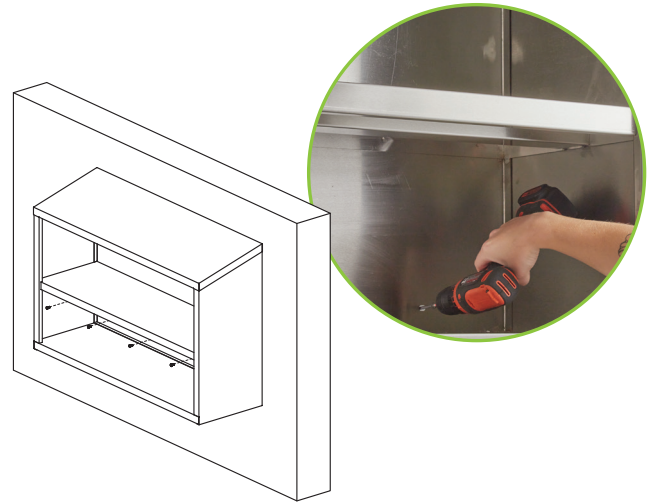
1

Attach the mounting bracket to the wall. Using a level to ensure the mounting bracket is level with the wall, then insert a screw (sold separately) through each of the pre-drilled holes in the mounting bracket.



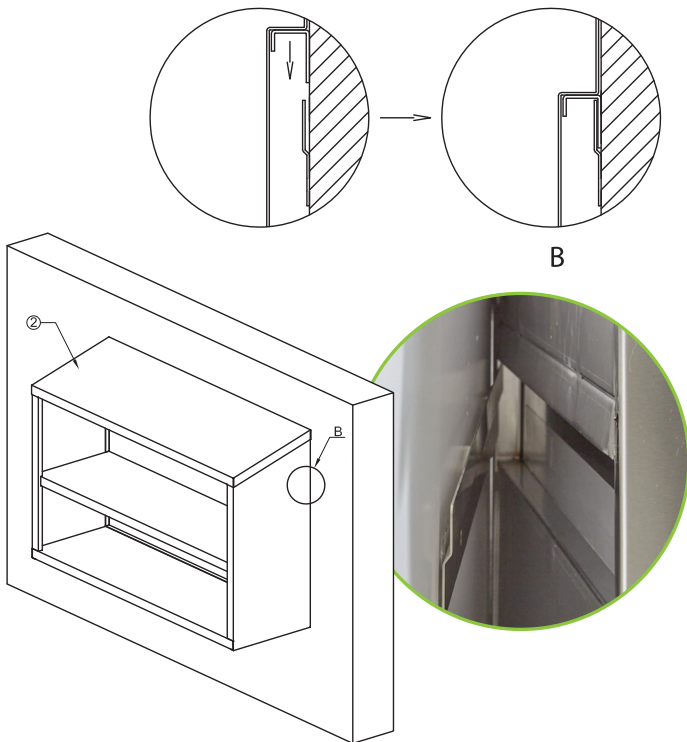
3

Through the pre-drilled holes in the wall cabinet, secure the cabinet to the wall using screws (sold separately).

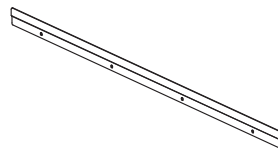


2

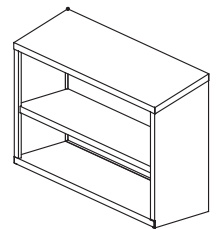
Lower the wall cabinet onto the mounting bracket. The channel on the back of the unit will fit into place on the mounting bracket for a temporary hold.



## Parts List



(1) 1pc



(2) 1pc