

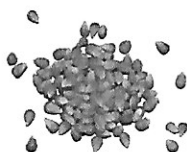
Amish Country Popcorn

Midnight Blue



A small hullless popcorn that is a little crunchy, yet very tasty!

Ladyfinger



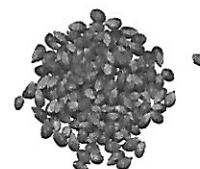
This old open-pollinate popcorn is similar to a variety called Tom Thumb. If you like small, hullless, and tender popcorn, you definitely will want to try this type.

Baby White



This small white is one of our smallest and most tender popcorns. It comes from separating the smaller kernels from our Medium White.

Baby Yellow



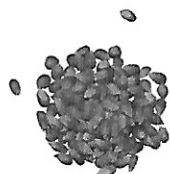
If you like the flavor of yellow popcorn, but don't like the coarse, tough kernels that often have many flaky hulls, you will love this small, tender variety!

Purple



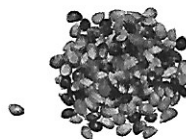
Here is Purple Popcorn for you to enjoy. It is a very good and tender popped kernel, a great "eating corn"! Purple is higher in antioxidants than the rest of our popcorn. It is one of our favorites.

Medium White



This popcorn is an Amish Country favorite. Here you have the finest white popcorn available.

Rainbow



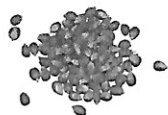
This is a fun popcorn for people who can't make up their minds. It's a unique blend of several of our popcorn varieties, great for eating or decorating your counter tops.

Red



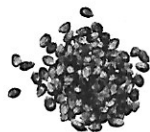
This hybrid is very similar to Medium White popcorn, but it has its own distinct characteristics. Red popcorn does not have many flaky hulls. This popcorn pops up fluffy and meaty white every time.

Medium Yellow



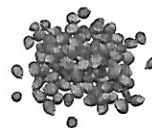
A little smaller popcorn than our Extra Large Caramel Type, but no doubt one of the best yellow popcorns you will ever taste! This popcorn is a favorite among popcorn lovers.

Blue



This hybrid popcorn pops medium to large kernels into fresh popcorn. It has its own flavor, typically a little sweeter and not a lot of hulls.

Extra Large Caramel Type



If you like large, fluffy popcorn, you will love this hybrid. It is great for enjoying plain, buttered, or for making caramel corn.

Mushroom



Pops in a ball! This is similar to the popcorn you buy at Christmas time in tins.