



High-Powered Commercial Blenders

Blender Models: 177GBB480T, 177GBB640T, 177GBB640V

Jar Models: 177GBBJAR48, 177GBBJAR64

06/2024

Read the manual thoroughly prior to equipment setup, operation, and maintenance.

Table of Contents

Safety	2
Operating Instructions	3
Cleaning & Sanitizing	4
Replacement Parts	5
Blender Coupler Replacement Instructions	6

Safety

READ AND SAVE ALL INSTRUCTIONS

- Do not immerse the blender in water or other liquid. Doing so can result in electrical shock.
- Always unplug from outlet prior to handling or cleaning.
- Avoid contact with moving parts while operating the blender.

CAUTION

- Blades are sharp. Handle carefully.
- This blender is not intended for use by children or individuals with impaired mental and/or motor skills. Individuals who lack experience operating a blender should be supervised during use.
- Never remove parts or clean the blender unless it is unplugged from the electrical outlet.
- Secure the lid before turning the blender on.
- Do not use the blender if the cord or plug is damaged. Contact the nearest authorized service agency for repair.
- Do not use outdoors.
- Keep the power cord on the counter in which the blender is being used. Do not allow it to hang over the counter or come in contact with liquids or hot surfaces.
- Do not place hands or utensils in the blender jar while it is operating. Doing so can cause severe personal harm and/or damage to the blender.
- When blending hot liquids (anything over 100°F), remove the center piece of the jar and start on the lowest speed setting. Do not stand directly over the blender while in use.
- Ear protection is recommended if blending for long periods of time.
- Never leave blender unattended while operating.
- Ensure you are using this blender on a properly grounded outlet. This blender comes with a 120V NEMA 5-15P plug. If unsure of your electrical configuration, contact a professional electrician before operating.



Intertek
5001647



Conforms to UL-763 & NSF8

Operating Instructions

GBB480T & GBB640T Toggle Controls

1. Ensure the blender is in the off position and place the container on the blender base. Make sure the blender is fully seated so that the drive coupling is in contact with the container and the base. Plug the blender into a 120V outlet.
2. Put the ingredients into the container and place the lid on. Push the lid down as far as it can go onto the container.
3. **Speed Settings:** This blender has 2 speed settings (high and low). Use the toggle switch to select the desired speed and the blender will begin working. Use the high option to crush ice quickly.
4. **Pulse:** This blender is also equipped with a pulse feature, which is engaged by holding down the “Pulse” button. The blender will run on high speed until the button is released. It will then return to the current speed setting.
5. Always allow the motor to stop completely before adding or removing the container from the base. Not following this warning could cause damage to the blender. This may void the warranty if it is deemed misuse is the cause of the malfunctions.
6. Do not operate the blender without a lid.
7. Always hold the blender container with one hand by the top of the lid to ensure the container remains secure atop the base.
8. Wash and dry the container after each use.



GBB640V Variable Speed Controls

1. Ensure the blender is in the off position and place the container on the blender base. Make sure the blender is fully seated so that the drive coupling is in contact with the container and the base. Plug the blender into a 120V outlet.
2. Put the ingredients into the container and place the lid on. Push the lid down as far as it can go on to the container.
3. **Speed Settings:** This blender has adjustable speed settings using a dial knob. The dial knob can be used to adjust the speed from low to high during blending, allowing for ultimate user control.
4. **Pulse:** This blender is also equipped with a pulse feature, which is engaged by holding down the “Pulse” button. The blender will run on high speed until the button is released. It will then return to the current speed setting.
5. Always allow the motor to stop completely before adding or removing the container from the base. Not following this warning could cause damage to the blender, which may void the warranty if misuse is deemed the cause of the malfunctions.
6. Do not operate the blender without a lid.
7. Always hold the blender container with one hand by the top of the lid to ensure the container remains secure atop the base.
8. Wash and dry the container after each use.



Cleaning & Sanitizing

Wash, rinse, sanitize, and dry the container prior to initial use. Blender containers should be cleaned after EVERY use to prevent residue build-up around the blade assembly.

- Remove the container from the base.
- Thoroughly clean the container using water, a sponge, and a dish soap such as Noble Chemical Sunbright (147SUNBRIGHT). Rinse the container in water.
- Sanitize the outside of the container and the base with a soft cloth and a sanitizing solution such as Noble Chemical QuikSan (147QUIKSAN).
- Fill container with sanitizing solution such as Noble Chemical Sani-512 (147SANI512). Place the container on top of the base and secure the lid. Turn the blender on to high speed to allow the sanitizing solution to work its way into the blade assembly and around the jar. Dump the solution into a sink and allow the container to air dry.
- Allow the lid to soak in the sanitizing solution for at least 2 minutes and then allow it to air dry.
- Ensure all parts of the blender are dried thoroughly before the next use.

Replacement Parts

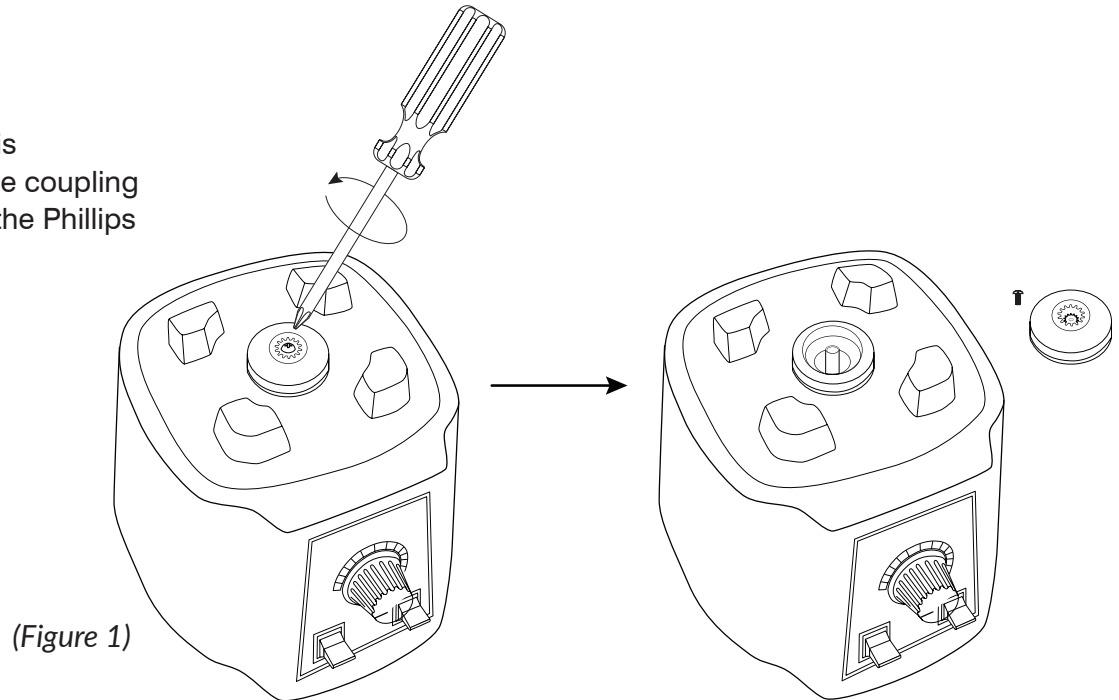
Replacement Part Item Number	Part Name
177GBBBLOCK2	Locknut
177GBBJAR48	Blender Jar - 48 oz.
177GBBJAR64	Blender Jar - 64 oz.
177GBBJARPAD	Blender Jar Pad
177GBBMTR180	Motor - 120V, 1800W
177GBBPBA1	Blade Assembly
177GBBPDC1	Drive Coupling
177GBBFOOT1	Foot
177GBBLID1	Blender Jar Lid

Blender Coupling Replacement Instructions

You will need:

- Phillips Screwdriver

1. Make sure the blender is unplugged. Unscrew the coupling counterclockwise with the Phillips screwdriver (Figure 1).



2. Put the new coupling on the blender and install it with the Phillips screwdriver, turning the screw clockwise (Figure 2).

