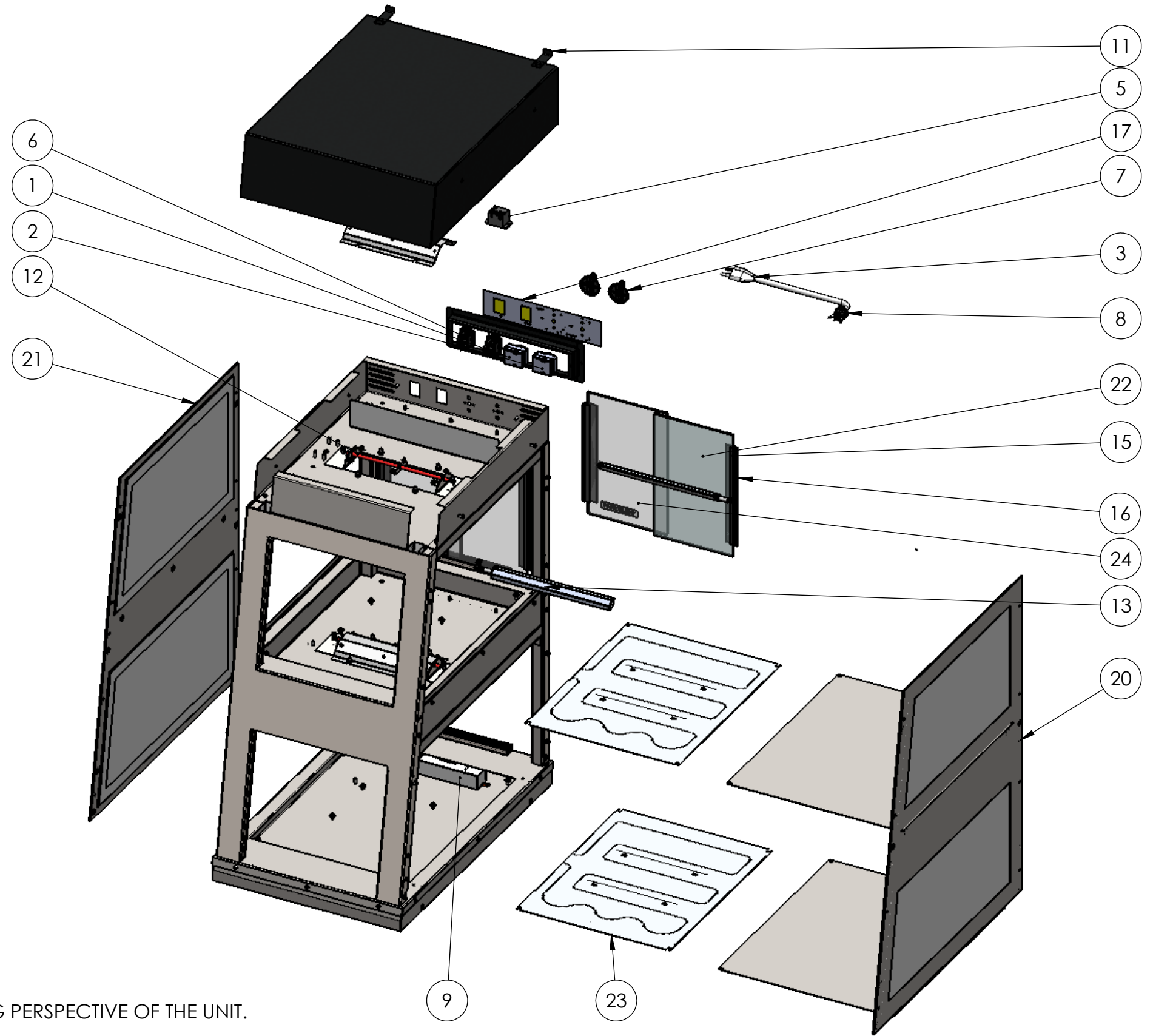




HHM SELF-SERVE

| ITEM NO. | PART NUMBER | DESCRIPTION                  | QTY. |
|----------|-------------|------------------------------|------|
| 1        | 356818-1    | REGULATING THERMOSTAT 90C    | 1    |
| 2        | 356819-1    | REGULATING THERMOSTAT 100C   | 1    |
| 3        | 17847-1     | CORDSET, 14AWG, SJTOW        | 1    |
| 4        | 2351601-1   | HEAVY DUTY 4" LEG            | 4    |
| 5        | 25357-1     | RELAY POWER                  | 2    |
| 6        | 352773-1    | RECT. POWER SWITCH - 120V    | 2    |
| 7        | 351788-06-1 | CONTROL KNOB - - HEAT STRIP  | 2    |
| 8        | B400320     | 14 GA STRAIGHT STRAIN RELIEF | 1    |
| 9        | RDC0145     | POWER FOR LED                | 1    |
| 10       | 356612-2    | CONTROL BEZEL - HCM BLK      | 1    |
| 11       | 356613-2    | TONG HOLDER - HCM BLK        | 2    |
| 12       | 355377-1    | CALROD HEATER - HCM-SS       | 2    |
| 13       | 355616-1    | LED - HCM-SS                 | 4    |
| 14       | 355618-1    | SELF-SERVE TRACK INSERT      | 2    |
| 15       | 355619-1    | GLASS REAR HANDLE - HCM      | 8    |
| 16       | 355620-1    | DOOR TRIM SEAL - HCM         | 4    |
| 17       | 356817-1    | OVERLAY-HHM                  | 1    |
| 18       | 356284-1    | HHM OPERATOR MANUAL          | 1    |
| 19       | 356239-1    | SHELF HEATER VHB TAPE SPARE  | 1    |
| 20       | 356378-2    | RIGHT PANEL SPARE - HCM      | 1    |
| 21       | 356379-2    | LEFT PANEL SPARE - HCM       | 1    |
| 22       | 356382-2    | REAR GLASS SPARE - HCM-SS    | 3    |
| 23       | 356385-2    | SHELF HEATER SPARE - HCM-SS  | 2    |
| 24       | 356814-2    | REAR GLASS SPARE-LOGO SS     | 1    |



NOTES:

- RIGHT AND LEFT DIRECTIONS ARE GIVEN FROM THE CUSTOMER FACING PERSPECTIVE OF THE UNIT.
- ITEMS 355929-1, 356239-1 NOT SHOWN

