



GVC-1502/ GVC-1502A

Professional Steam Cleaner

Operating and Maintenance Instructions



CE

Read before operating.

CONTENTS:

IMPORTANT SAFETY INSTRUCTIONS.....3

SAFETY FEATURES4

POWER CONNECTIONS5

ELECTRICAL SAFETY6

UNIT OVERVIEW6

SPECIFICATION7

OPERATING INSTRUCTIONS 7-8

CHEMICAL INJECTION.....8

REFILLING THE WATER TANK8

ACCESSORY KIT.....9

HARDWARE PARTS DIAGRAM.....10

HARDWARE PARTS LIST.....11

WIRING PARTS DIAGRAM12

WIRING PARTS LIST13

BOILER PARTS DIAGRAM14

BOILER PARTS LIST.....15

PLUMBING PARTS DIAGRAM.....16

PLUMBING PARTS LIST.....17

Thank you for purchasing this Goodway GVC-1502/GVC-1502A. We appreciate your business and look forward to serving you in the future. As with all Goodway products, you can be assured that the finest quality components and workmanship have gone into this machine.

Please take a few minutes to read the following Operating and Maintenance Instructions. By carefully following the instructions, you will obtain years of trouble free service from this product. Please pay particular attention to the safety instructions and exercise caution when using this machine.

GOODWAY® TECHNOLOGIES CORPORATION
HVAC & FACILITY MAINTENANCE SOLUTIONS

For Sales Call: 1-800-333-7467
For Service Call: 1-800-370-2855



WARNING



IMPORTANT SAFETY INSTRUCTIONS

Read all instructions before using this pressure washer.

1. **▲ Warning:** Read and understand all instructions before using.
2. Keep this manual with the unit at all times.
3. Do not operate without eye protection or other necessary protective gear.
4. Consult SDS on all products used with this machine.
5. Consult Goodway or chemical manufacturer about mixing or using unspecified chemicals with this unit.
6. Keep work area clean and well lit.
7. Service must be performed by qualified personnel.
8. Unplug the power cord when servicing the unit or leaving the unit unattended.
9. Turn off all controls before unplugging the power cord.
10. When unplugging the power cord, grasp the plug-not the cord.
11. Do not use the machine if it has a damaged cord or plug.
12. If the machine does not operate properly or has been damaged or exposed to water, return it to factory for service.
13. Do not handle the base unit or plug with wet hands.
14. Do not use unit with combustible fluids or where combustible fluids or fumes may be present.
15. Be extra careful when not on level, secure ground.
16. Do not use unit with children or visitors in the immediate area.
17. Do not operate unit when fatigued or under the influence of alcohol or drugs.
18. Keep operation area clear of all persons.
19. Do not over reach or stand on unstable support.
20. Keep good footing and balance at all times.
21. Replace any damaged, missing or worn safety labels.

SAFETY FEATURES

- Boiler pressure safety valve.
- Pressure gauge.
- Boiler thermostat.
- Auto thermostat cut out.

USAGE - This appliance must only be used for its designated purpose: a steam generator with cleaning accessories. The manufacturer will not be held liable for any damages arising from the improper, incorrect or unreasonable use of this appliance.

POWER SUPPLY - Before connecting the appliance, check that the data on the voltage rating plate are the same as the electrical supply. The rating plate is found at the rear of the steam cleaner. **THIS APPLIANCE MUST BE GROUNDED.** Use of a ground fault circuit interrupter (GFCI) for additional safety is strongly recommended.

The following rules must be observed when using this appliance:

- Never use the appliance barefooted, or in wet ambient conditions.
- Never use power supply extension cords without appropriate safety marks (CE, UL, IMQ-VDE, BS, etc.).
- Always check daily before use that the power supply cord, plug and sockets (including any extension cords) are in good condition; check for visible signs of damage and do not use if damaged or faulty.
- Never pull at the power supply cord, and never allow it to rub against sharp edges, or get caught between doors or drawers; protect the cord from heat, stress and moisture, and route away from paths/work areas.
- Never allow children or inexperienced, untrained, or unauthorized people access to this appliance.
- Never leave the GVC-1502 unguarded when switched on.
- Never leave it unprotected from adverse weather conditions (rain, ice, etc.).
- Never allow any part of this appliance to be immersed in liquid.
- Always ensure the GVC-1502 is kept upright, even when not switched on.

Use only authorized parts, components and accessories with this appliance. For instance, should the power supply cord become damaged, it must be replaced only with the correct cord, obtainable (as with all components, parts and accessories) from Goodway Technologies Corp.

Always unplug at the power supply;

- Before emptying the boiler.
- Before cleaning or servicing the appliance.
- Before parts are exchanged or removed.

The steam temperature can reach **320°F (160 °C)** at the outlet, so never point the steam in your direction, at other people or animals, as this presents a real **danger of scalding**.

- In the event of breakdown or malfunction, switch off the GVC-1502 and contact Goodway Technologies Corp. Customer Service Department.
- Electrical appliances and fittings (TV, radio, lights, etc,) should never be cleaned with steam, even when not connected to a power supply. Exercise extreme caution when cleaning fixed electrical plant equipment; if in any doubt contact the relevant suppliers.
- Do not put any detergent or other chemical substances (especially perfumed) in the water canister, as noxious gases can arise due to the high temperature.
- Both main 'on/off' and pistol-grip switch **must be off** ('OFF') when connecting steam hose to the GVC-1502.
- Ensure that the accessories are securely connected into the pistol-grip, by pulling both parts against each other to ensure a tight fit.
- Exercise care when accessing internal components. For instance, steam-associated components (e.g. drain screw) get **very hot** during operation and **cools down very slowly after use**.
- Do not use on or near **heat sensitive materials**; this may **damage** such materials!!
- If you are unsure whether the material you want to clean is suitable for dry vapor steam cleaning, check first with a trial application on a small unobtrusive piece of the same material.
- Do not use the small round metal brush on scratch-sensitive materials.
- Exercise utmost care when cleaning windows or glass surfaces in low temperatures; warm the surfaces with steam beforehand to reduce the possibility of damage and injury.
- The **GVC-1502** must never be immersed in water. Failure to comply with this warning will ENDANGER LIFE.
- Always store the GVC-1502 in a safe, dry and **frost-free** place. Frozen components can fail. Exercise care when storing directly after use as residual heat remains for some time.
- For the GVC-1502 to work efficiently the ambient temperature should be between 50°F (10°C) and 104°F (40°C) with humidity lower than 90%.

NOTE: Deionized and distilled water should never be used in the GVC-1502.

POWER CONNECTIONS

The GVC-1502 is supplied with 13 feet (4 m) of cable and has a 15A three pin plug.

Ensure voltage between machine and supply match.

ELECTRICAL SAFETY

Grounded tools must be plugged into an outlet properly installed and grounded in accordance with all codes and ordinances. Never remove the grounding prong or modify the plug in any way. Do not use any adapter plugs. Check with a qualified electrician if you are in doubt as to whether the outlet is properly grounded.

If the tools should electrically malfunction or break down, grounding provides a low resistance path to carry electricity away from the user.

UNIT OVERVIEW



SPECIFICATION

Description	GVC-1502	GVC-1502A
Stainless steel boiler capacity (continuous filling)	0.6 gallon (2,3 liters)	0.6 gallon (2,3 liters)
Water tank capacity	1.3 gallons (5 liters)	1.3 gallons (5 liters)
Heating time	5 minutes	5 minutes
Pressure in use (kinetic energy)	90 psi (6 bar)	90 psi (6 bar)
Maximum temperature	320°F (160°C)	320°F (160°C)
Maximum power	1500 W	1500 W
Power requirement	115V 50/60 Hz	230V 50/60 Hz
Steam production	8 lbs/hour (3,6 kg/hour)	8 lbs/hour (3,6 kg/hour)

OPERATING INSTRUCTIONS

1. Lift the protective cover and plug the steam hose into the steam hose connecting socket. When the plug is located correctly it will click into place.
 2. Unscrew the filler cap and carefully fill the tank with water.
- DO NOT ADD ANY KIND OF CLEANING CHEMICAL TO THE WATER TANK.**
3. Plug unit into appropriate supply.
 4. Turn main switch ON to start the machine. The ON/OFF indicator light will illuminate.
 5. The green light flashing indicate that boiler is being filled with water. Wait until the pump stops filling the boiler (ready light goes on.).
 6. Switch ON the boiler at the ON/OFF switch. After approximately 5 minutes from cold fill, the machine reaches 90 ± 5 psi (6 bar) steam pressure and a temperature of 320°F (160°C) inside the boiler.
 7. The green indicator light will illuminate when the machine is ready.
 8. Choose the accessory that you wish to use. Connect it to the pistol grip by clicking into place. Before you start cleaning, direct the nozzle into a suitable receptacle and depress the trigger on the handle to blow out residual condensation from the steam hose.
 9. Now direct the steam jet onto the surface you wish to clean and depress the trigger.

CONTINUED OPERATING INSTRUCTIONS

10. As water in the boiler is used, it is automatically replenished from the water tank until the tank is empty.
11. The red indicator light and an acoustic signal will alert you that the water tank is empty.

YOU MUST STOP USING THE MACHINE AT THIS POINT AND REFILL THE WATER TANK.

ATTENTION: Failure to refill the machine in time will activate the security system cut out and the appliance will require the attention of the Goodway Technologies Service Department.

CHEMICAL INJECTION

The GVC-1502 has the facility to add detergent to the dry steam as it is released from the cleaning head.

The GVC-1502 is supplied with two chemical bottles located on top of the machine housing. This allows for increased capacity of a single chemical or for the use of two different chemicals. To switch from one chemical bottle to the other; disconnect hoses from back of the machine and switch them out.

When using chemical injection, please ensure that the following instructions are followed:

- Use a suitable detergent (GVC-500)

DANGER Chemical must be deemed safe for steam/vapor application.

- Fill detergent tank with 5 liters of detergent.
- To operate chemical pump press the chemical switch on the pistol grip.

NOTE: USE IN SHORT BURSTS

- After finishing with chemical, operate steam only for 30 seconds to flush the chemical from the lines.

ATTENTION: Failure to refill the machine in time will activate the security system cut out and the appliance will require the attention of the Goodway Technologies Service Department.

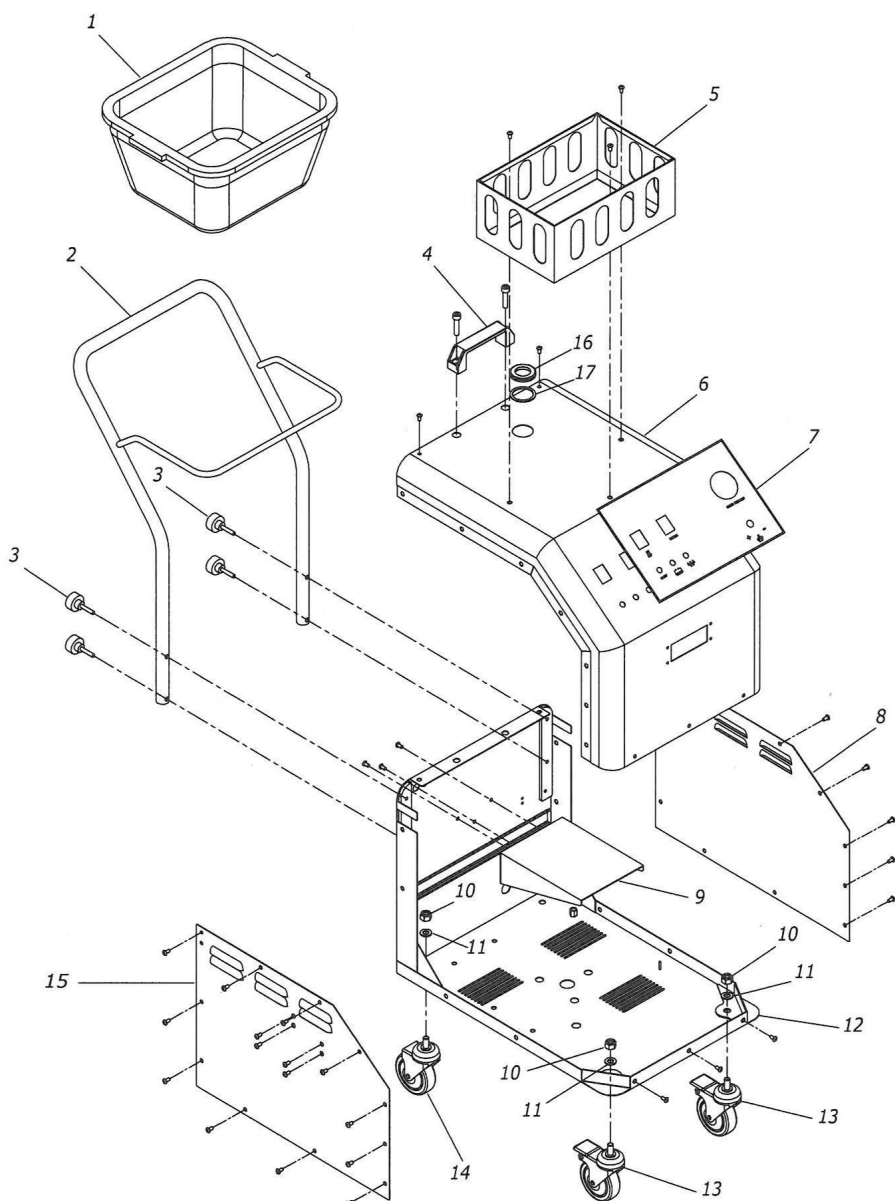
REFILLING THE WATER TANK

Refill with water when red indicator light come on, close the filler cap.

ACCESSORY KIT

Description		QTY
9370 8' (2,4 m) Steam Hose		1
9371 2 pieces 19" (48,2 cm) Extensions Wand		2
9372 6.5" (16,5 cm) Curve Lance		1
9373 Cover for Floor Tool		1
9374 11" (28 cm) Floor Brush Complete		1
9375 5" (12,7 cm) Triangular Brush		1
9376 9.5" (24 cm) Squeegee Tool		1
9377 2 3/8" (5 cm) Round Nylon Brush		1
9378 1" (2.5 cm) Round Copper Brush		3
9379 1" (2.5 cm) Round Nylon Brush		3
9381 1" (2.5 cm) Round Stainless Steel Brush		3

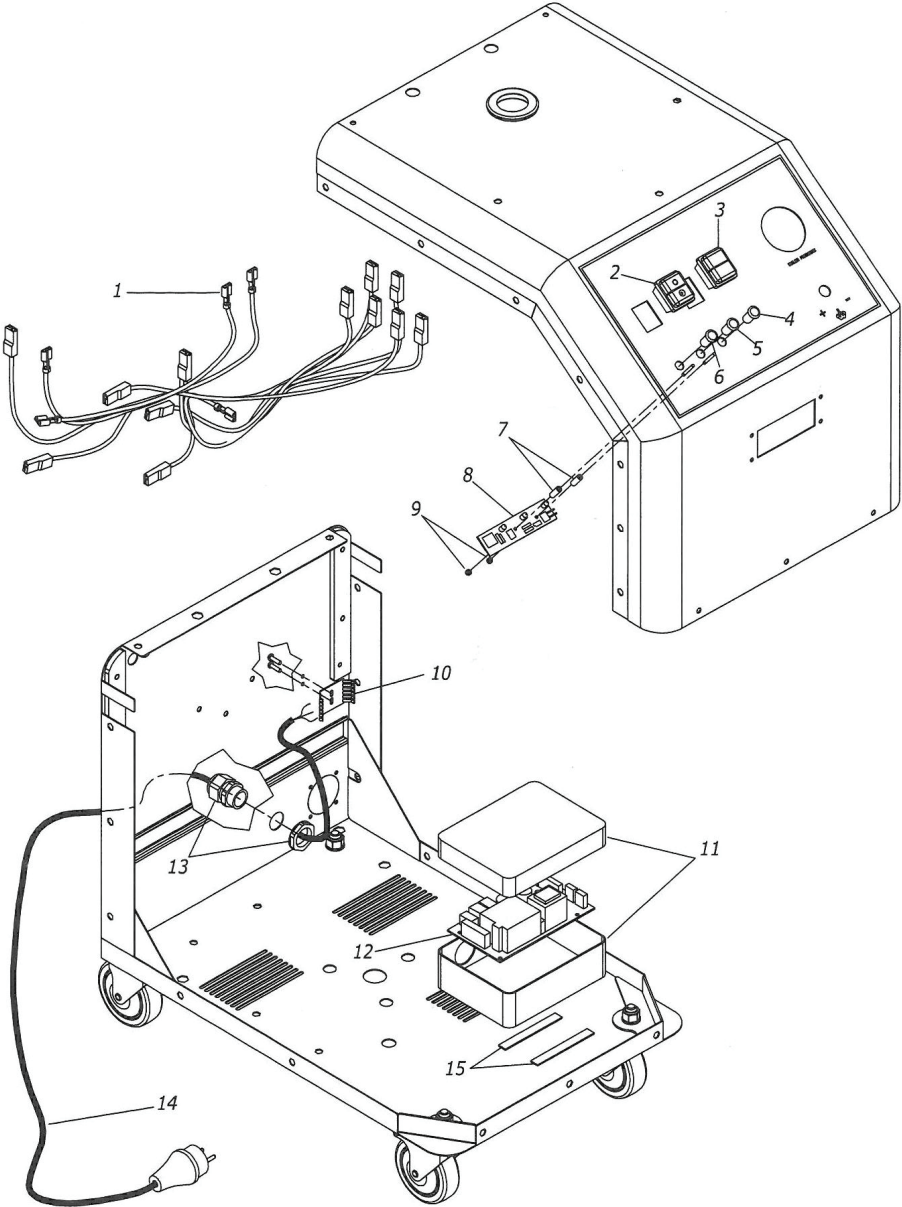
HARDWARE PARTS DIAGRAM



HARDWARE PARTS LIST

Ref #	Part # (120V &230V Unit)	Description
1	93-S02157	Grey Basket
2	93-S02158	Handle
3	93-S02159	Handle Screw
4	93-S02160	Cover Handle
5	93-S02161	Basket
6	93-S02162	Cap
7	93-S02163	Label
8	93-S02164	Left Panel
9	93-S02165	Holder for Tank
10	93-S02166	Nut
11	93-S02324	Washer
12	93-S02168	Base
13	93-S02169	Wheel with Brake
14	93-S02325	Wheel without Brake
15	93-S02176	Right Panel
16	93-S02326	Silicon Seal
17	93-S02178	Mousse

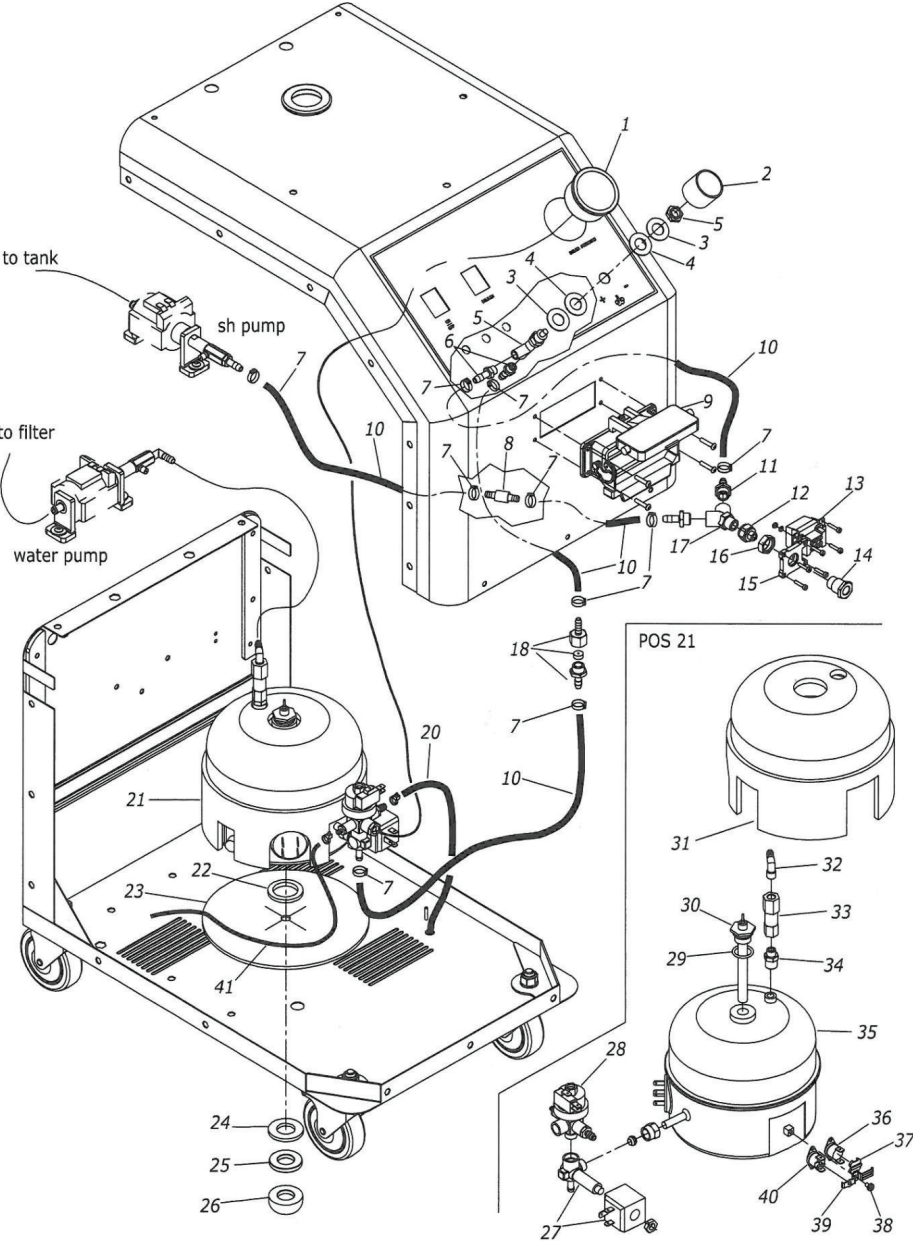
WIRING PARTS DIAGRAM



WIRING PARTS LIST

Ref#	Part# (120V Unit)	Part# (230V Unit)	Description
1	93-S02640	93-S02327	Wiring
2	93-S02180		Power Switch
3	93-S02181		Boiler Switch (Black)
4	93-S02360	93-S02182	Yellow light with Nut
5	93-S02361	93-S02183	Red light with Nut
6	93-S02362	93-S02184	Green light with Nut
7	N/A	93-S02185	Spacer
8	N/A	93-S02186	Electronic Card
9	N/A	93-S02187	Locking Nut
10	93-S02188		Plastic Support
11	93-S02189		Box
12	93-S02642	93-S02190	Electronic Board
13	93-S02191		Strain Reliever
14	93-S02364	93-S02192	Power Supply Cable
15	93-S02194		Label

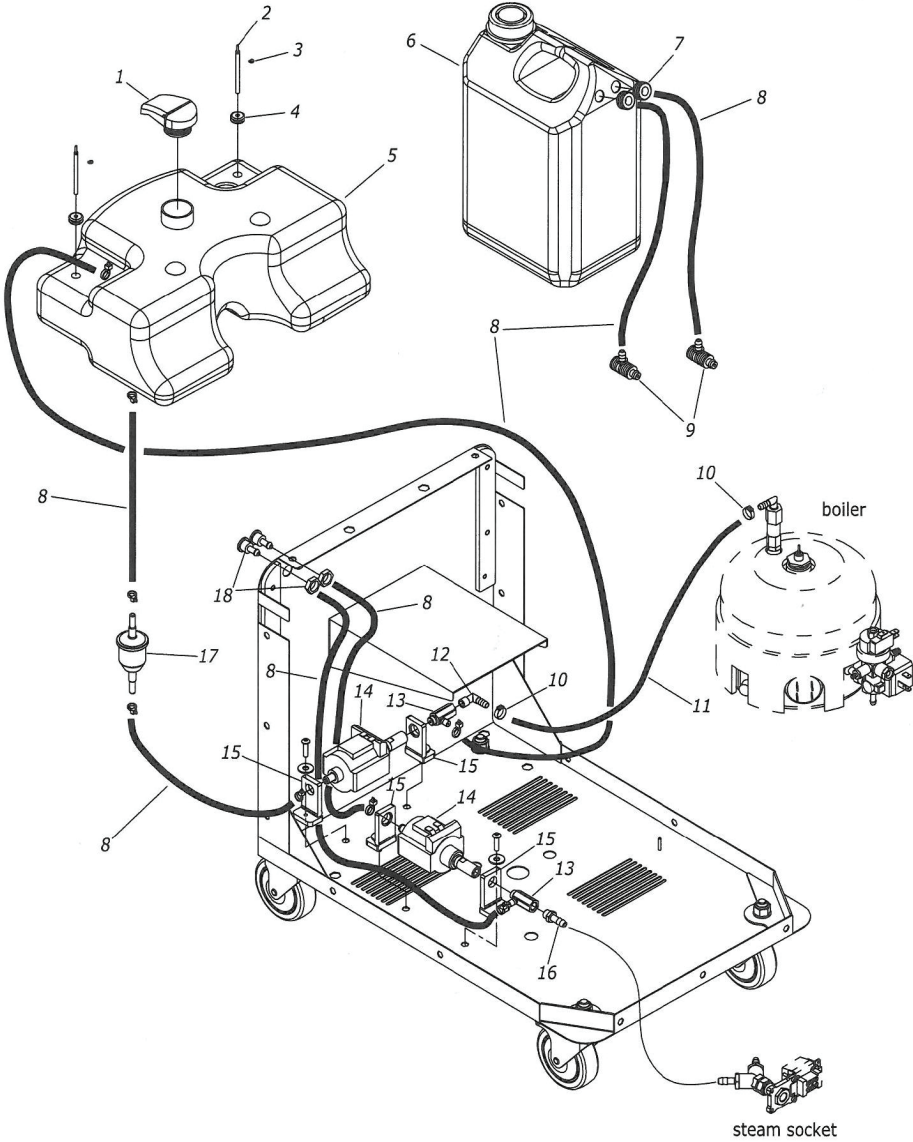
BOILER PARTS DIAGRAM



BOILER PARTS LIST

Ref#	Part# (120V Unit)	Part# (230V Unit)	Description
1	93-Q05751093	93-S02328	Pressure Gauge
2	93-S02196		Knob
3	93-S02197		Washer
4	93-S02198		Rubber Washer
5	93-S02199		Tap
6	93-S02200		Hose fitting
7	93-S02201		Clamp
8	93-S02202		Air Valve
9	93-S02203		Housing
10	93-S02204		Hose
11	93-S02205		Fitting
12	93-S02206		Fitting
13	93-S02207		Socket
14	93-S02208		Fitting
15	93-S02209		Plate for ILME Socket
16	93-S02210		Nut
17	93-S20211		Fitting
18	93-S02212		Complete Feeder
20	93-S02242		Tube
21	93-S02366	93-S02329	Boiler
22	93-S02330		Washer
23	93-S02331		Insulation Disc
24	93-S02332		Thermal Washer Nut
25	93-S02333		Nut Tightening Boiler
26	93-S02334		Drain Plug
27	93-S02367	93-S02335	Solenoid Valve
28	93-S02336		Pressure Switch
29	93-S02337		Ring
30	93-S02338		Boiler Level Probe
31	93-S02339		Insulation
32	93-S02340		Fitting
33	93-S02227		Air Valve
34	93-S02228		Fitting
35	93-S02368	93-S02341	Boiler
36	93-S02369	93-S02342	Thermostat
37	93-S02343		Bracket
38	93-S02344		Screw
39	93-S02345		Bracket
40	93-S02346		Thermostat
41	93-S02234		Hose

PLUMBING PARTS DIAGRAM



PLUMBING PARTS LIST

Ref#	Part# (120V Unit)		Part# (230V Unit)	Description
1	93-S00235			Cap
2	93-S02236			Level Probe
3	93-S02237			E Clip
4	93-S02238			Bushing
5	93-S02239			Water Tank
6	93-S02240			Chemical Tank
7	93-S02241			Silicon Holder
8	93-S02242			Silicon Tube
9	93-S02243			Fitting
10	93-S02201			Clamp
11	93-S02204			Silicone Hose
12	93-S02347			Elbow
13	93-S02247			Relief Valve
14	93-S02370		93-S02248	Water Pump
15	93-S02249			Bracket
16	93-S02200			Hose fitting
17	93-S02250			Water Filter
18	93-S02251			Socket



HVAC & FACILITY MAINTENANCE SOLUTIONS

Provides innovative maintenance solutions for a wide variety of industries including commercial HVAC, food and beverage processing, power generation and manufacturing.

Call Us: +1-203-359-4708
For Sales Call: 1-800-333-7467
For Service Call: 1-800-370-2855

GOODWAY® TECHNOLOGIES CORPORATION

420 West Avenue, Stamford, CT 06902 USA

Tel: 203-359-4708 · Toll-Free Tel: 800-243-7932

Fax: 203-359-9601 · Toll-Free Fax: 800-359-9625

Email: goodway@goodway.com

Visit: www.goodway.com

P/N: MNL-GVC1502

©Copyright 2019 Goodway Technologies Corp., Stamford, CT USA

Effective date August 7, 2019

Goodway is a Trademark of Crossford International.

Goodway reserves the right to improve products; contact the factory for the latest configuration and uses.